

## System Parts:

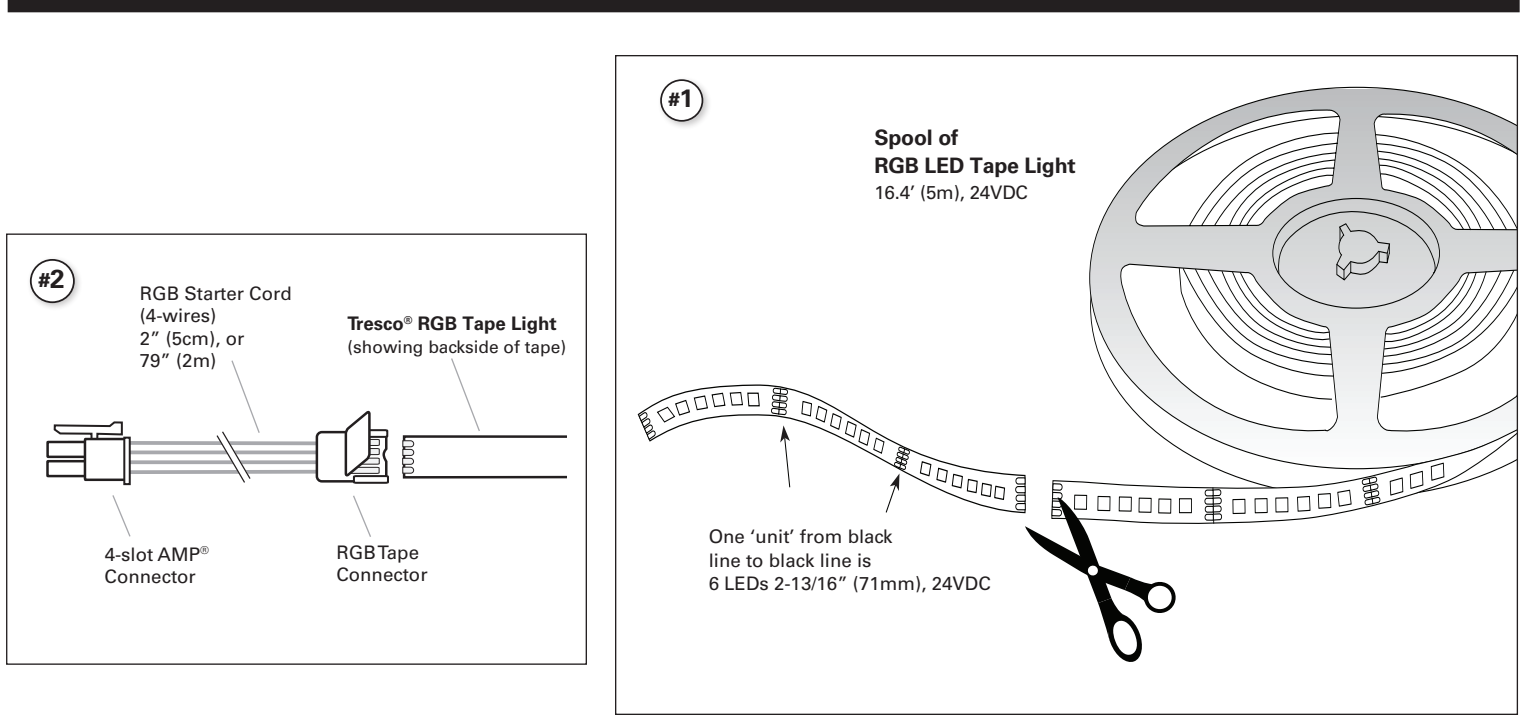
- (1) Spool of RGB LED Tape (24V) 16.4 ft (5m) . . . . . P/N: L-TPELED-24RGB-1
- (1) Power Supply, Class 2, 24VDC/96W max
- (1) RGB Controller (required for color mixing)
- (1) RGB Starter Cord 2" (5cm) . . . . . P/N: L-TPEPKT-2IN-RGB-1, (or) ...
- (1) RGB Starter Cord 79" (2m) . . . . . P/N: L-TPEPKT-2M-RGB-1

**Accessories:** (see below)

# Installation Instructions

## RGB LED TAPE LIGHT

**24VDC, 4.4W/ft.**



## READ ALL INSTRUCTIONS BEFORE INSTALLING SYSTEM

**Before beginning installation, be sure power is turned OFF to the light system**

Tresco Lighting's LED Tape light system is designed to adhere to a smooth, clean surface (indoor locations only).

NOTATIONS to help determine installation layout:

- Wattage for 24VDC system is 4.4W/ft.
- Maximum linear run of RGB Tape Light from one Starter Cord is 16.4' (5m).
- Maximum length of RGB Tape Light on all runs from a single 24VDC/96W Power Supply is 21' (6.4m).
- Minimum linear run is one 'unit' of 6 LEDs. The length of each RGB Tape Light 'unit' from line-to-line is 2-13/16" (71mm). (see Fig. 1)

Tresco's RGB Tape Light can be used with any Class 2, 24VDC/96W Power Supply. As an option, Tresco® Class 2, 24VDC Power Supplies are available:

24VDC/96W max. part no.: L-24VDCELT96-1

For more Power Supply options, see Tresco® Specifications Catalog.

**IMPORTANT:** See separate instruction sheets for additional installation information on Power Supplies and (optional) RGB Controllers.

### Installing the RGB Starter Cord:

1. Roughly lay out the lighting system before installation to verify final positioning of all components.
2. Route the Starter Cord so the RGB Tape connector (see Fig. 2) is positioned exactly where you want the FlexTape to begin. Mount the Starter Cord with insulated staples or plastic ties.
3. The 4-slot AMP® Connector on the Starter Cord (see Fig. 2) attaches to a Tresco® RGB Controller (optional) powered by a Class 2 Power Supply max 96W 24VDC. (see separate instruction sheets for more installation information).

To extend the length of the Starter Cord, use Tresco® RGB Extension Cords with '4-slot AMP' connectors on both ends. Available in the following lengths:

- 2 feet (60cm) part no.: L-RGBEXT-60, and
- 4 feet (120cm) part no.: L-RGBEXT-120

Next, follow **Steps 4 to 11** on page 2 to install the RGB Tape Light.

**Accessories:** Various link cords and optional accessories are available (see catalog for more details).

(Instructions continued on page 2)

# Installation Instructions

## RGB LED Tape Light

24VDC, 4.4W/ft.

(Continued from page 1)

### Installing the RGB Tape Light:

- Cut Tape Light to length. Use the black lines on the Tape Light as a guide to cut the tape, but slightly back off of the black line and make your cut to give maximum surface area for the contacts (see Fig. 3A). Note: cutting anywhere else but on the contacts will damage that 'unit' of 6 LEDs. Do NOT cut on soldered joints.
- Before inserting the Tape Light into the Starter Cord's RGB Tape Connector, peel off approximately 1" (25mm) of backing from the Tape Light. The Connector will not close properly without the tape's backing removed.
- Position RGB Tape Connector so its tab is facing down, and Tape Light is facing up (see Fig. 3B). Next, make sure to match-up the contacts ... **IMPORTANT:** The Tape Light's contacts should match-up with the Starter Cord's color-coded wires (**Blk-G-R-B**) (black wire is positive +). See small markings on the cut end of the Tape Light (**+G-R-B**) (see Fig. 3C). If needed, rotate the Tape Light section 180° (end-to-end) to match-up.
- With contacts matching as noted above, insert the end of the Tape Light into the slot in the Connector. (see Fig. 3B). The 'notch' in the Connector allows the Tape Light and its first LED diode to slide farther into the slot until seated. After firmly seated, flip the Connector with Tape Light over so that the Connector tab is now facing up (see Fig. 3D). Then snap the tab down. **Lock the tab in place by pushing down with a small screwdriver on both corners of the tab.**
- If you continue the Tape Light run, use RGB Link Cords with RGB Tape Connectors on both ends, or RGB Back-to-Back (BTB) connectors. Connect the Link Cord's RGB Tape Connector or the BTB to the loose end of the last Tape Light section. Again make sure to match-up the color-coded wires (**Blk-G-R-B**).

Tresco® RGB Link Cord part no.: L-TPELNKx-RGB-1  
(x equals various length options)

Tresco® RGB BTB connector part no.: L-TPE-BTB-RGB-1

Continue to link Tape Light sections until all links are made in the run. Note: Maximum linear run of RGB Tape Light from one Starter Cord is 16.4' (5m).

Use insulated staples or plastic ties to secure all cords.

### IMPORTANT SAFETY INSTRUCTIONS

**CAUTION: To reduce the risk of fire, electric shock, or injury to persons:**

- NOT intended for outdoor use or where exposed to excessive moisture.
- Tape Light is very flexible, but CANNOT be kinked or creased or the internal contacts may break.
- Use proper Class 2, Power Supply for the lighting system – e.g. 24VDC Power Supply with 24V Tape Light.
- Use only insulated staples or plastic ties to secure cords.
- Route and secure cords so that they will not be pinched or damaged when the cabinet is pushed to the wall.
- NOT intended for use in enclosed or recessed installations, such as in ceilings, soffits or walls.
- Do not run line voltage power supply cord through holes in walls, ceilings, floors or similar permanent structure.
- If required, a licensed electrician should be consulted for wiring through permanent structures. When mounting and wiring light system, follow all local electric codes and the National Electrical Code (NEC).
- Disconnect electrical power before cutting light or modifying system.
- Individual LEDs cannot be replaced. Instead replace entire Tape Light section.

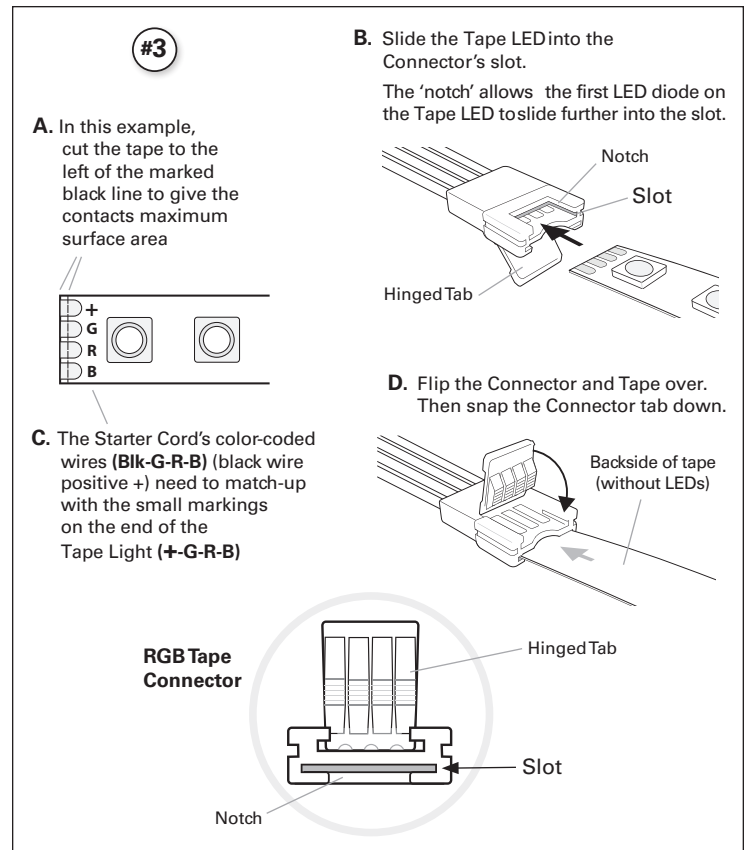
This light is intended to be used as cabinet fixtures on metal, wood, particle board or other structurally sound, heat-resistant surface. Care should be taken during and after installation to avoid contact of light with wiring, cord, or any combustible material.

- After all links are completed to the Tape Light run, peel off the backing from the Tape Light sections exposing the adhesive side of the tape. Position the tape on any smooth, flat surface (cabinet, shelf, etc.) and firmly rub down the tape IN BETWEEN the LEDs, do NOT push down on the LEDs themselves. The tape should firmly adhere to clean surfaces that are smooth and clear of oil, grease, dust or dirt.

Note: The 3M™ adhesive is pressure sensitive tape. Pressure must be applied in order for proper adhesion to take place. Not intended for rough or raised surfaces.

- To add more Tape Light runs from a new cord, repeat the Starter steps above.

- Double-check all connections.



Save these instructions for future reference.  
For technical assistance, call 1-800-227-1171



Tresco Lighting by Rev-A-Shelf  
12400 Earl Jones Way  
Louisville, KY 40299

Tel: 800-227-1171  
Fax: 502-491-2215

Email: [cservice@trescolighting.com](mailto:cservice@trescolighting.com)  
Web: [www.trescolighting.com](http://www.trescolighting.com)

