

This document, including the design, configuration and mechanical features revealed herein are the sole, confidential and proprietary property of TRU Corporation. Reproduction or use thereof, in whole or part, is prohibited without the prior written consent of TRU Corporation.

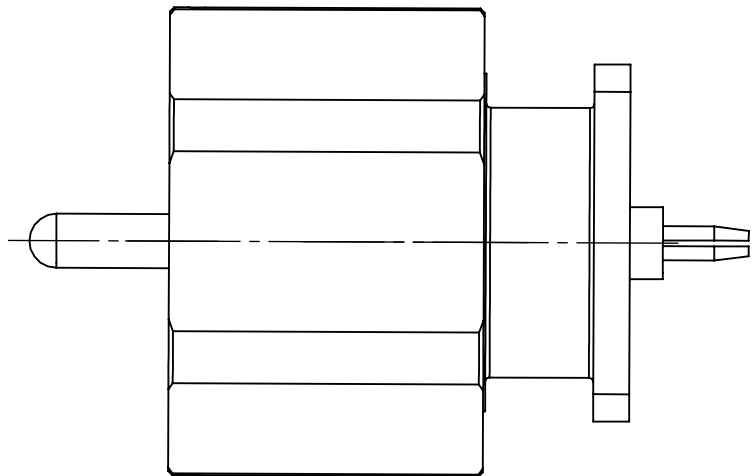
REV.	DESCRIPTION	DATE	APPROVED
-	ORIGINAL ISSUE	4/23/98	RMK
A	CHANGED PER ECO 3913	03/02/11	TRC

D

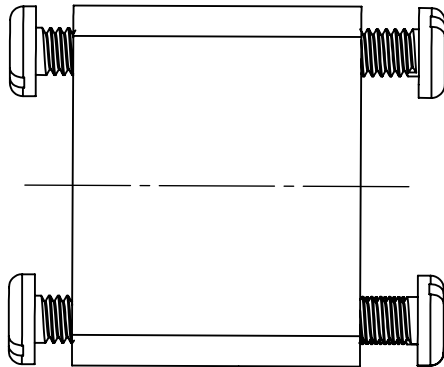
C

B

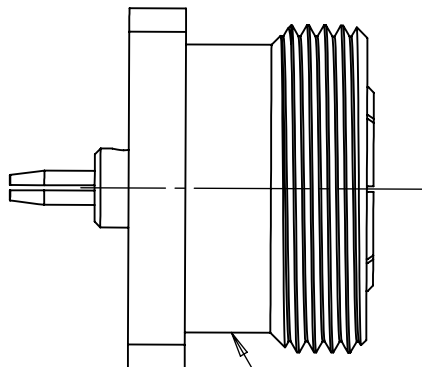
A



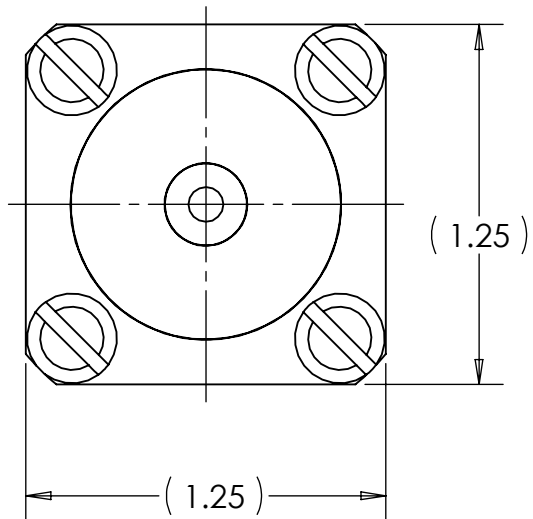
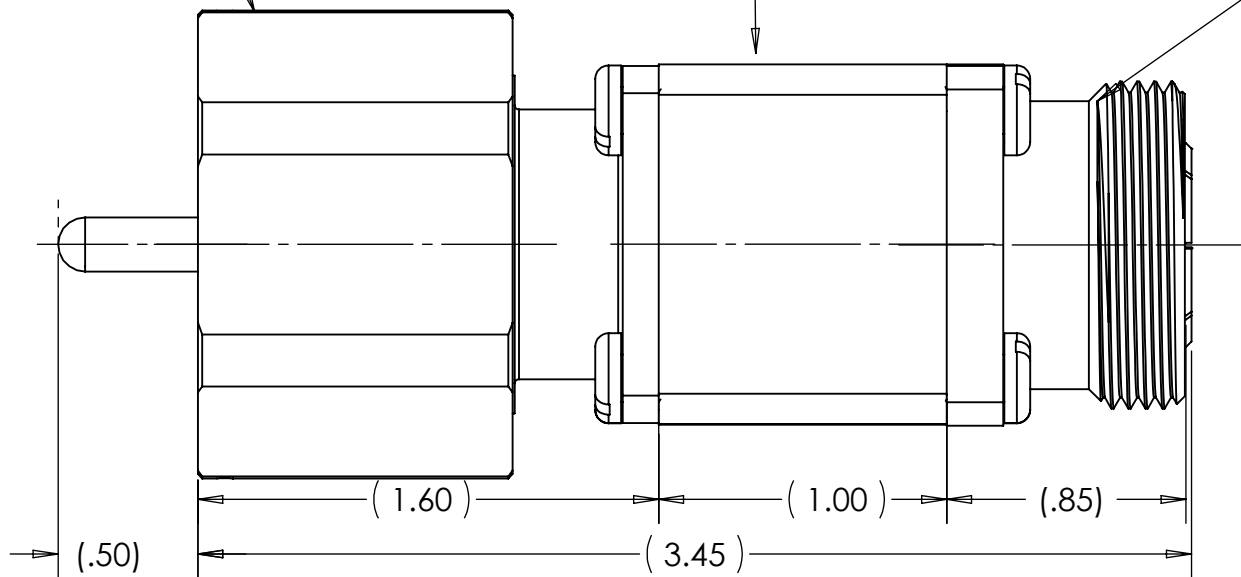
TRU-15008
LC MALE



TRU-6858
ADAPTER BLOCK
(SCREWS INCLUDED)



TRU-6813
7-16 FEMALE



MATERIAL	
COMMENTS:	
surface area: sq inch	weight: lbs

DO NOT SCALE DRAWING

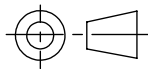
UNLESS OTHERWISE SPECIFIED:
DIMENSIONS ARE IN INCHES

TOLERANCES:
FRACTIONS: $\pm 1/64$
.XX : $\pm .01$
.XXX: $\pm .005$
ANGLES: $\pm 1/2^\circ$
MACHINED SURFACES:

63/

DRAWN RMK	DATE 4/23/98
ENG APPR. RMK	DATE 4/23/98
MFG APPR.	DATE
OTHER APPR.	DATE

THIRD ANGLE PROJECTION



TRU CORPORATION
245 LYNNFIELD STREET, PEABODY, MA 01960

The Custom Interconnect Leader™

TITLE:
ADAPTER ASSEMBLY
STRAIGHT, COAXIAL, RF
SERIES: 7-16(f) TO LC(m)

SIZE
B

DWG. NO.

TRU-8212-07

REV
A

CAGE CODE: 92180

SCALE: 1:2

SHEET 1 OF 1