



60"

Item Number:

860-V60D-CFO  
860-V60D-SOK

JAMES MARTIN



VANITIES™

Sonoma 60" Double Vanity

Diagrams with Dimensions  
page 02 of 03



NOTE ONE: Countertops are not shown in these diagrams. (Cabinet Only)

NOTE TWO: Internal Shelves (Shown) are designed to align with sinks in James Martin's Optional Countertops. Customers' own countertops and sinks may align differently, and modification may be required. Please consult our website for Countertop Diagrams: [www.jamesmartinvanities.com](http://www.jamesmartinvanities.com)

Version: 201906

60"

Item Number:

860-V60D-CFO  
860-V60D-SOK

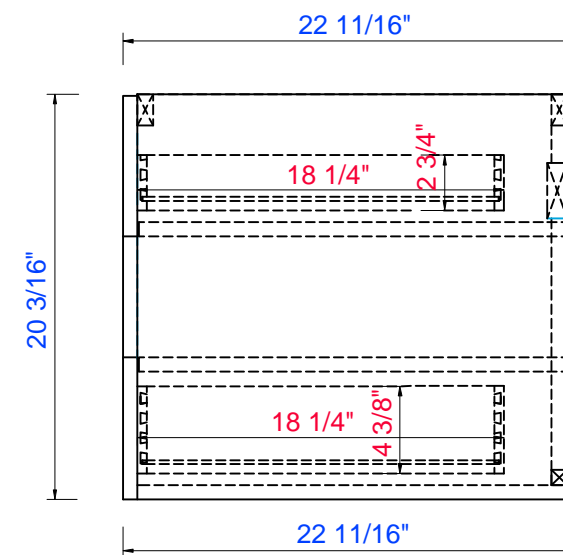
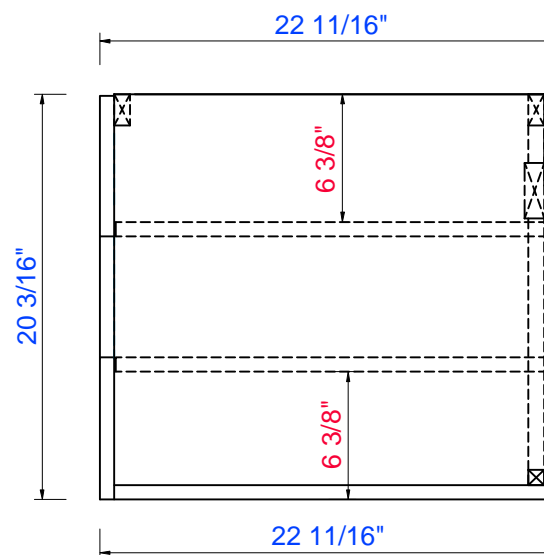
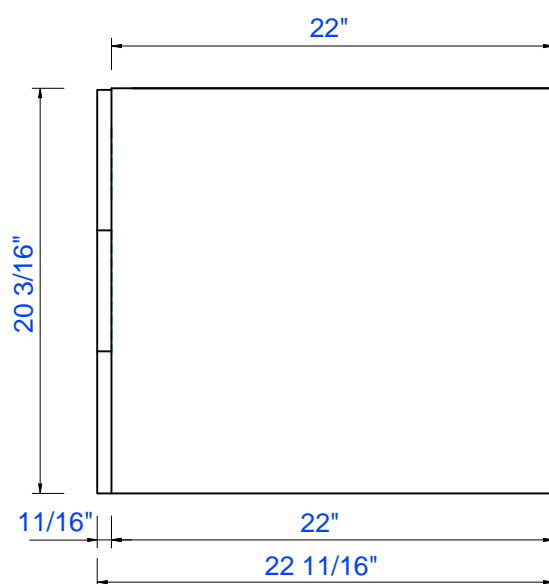
JAMES MARTIN



VANITIES™

Sonoma 60" Double Vanity

Diagrams with Dimensions  
page 03 of 03

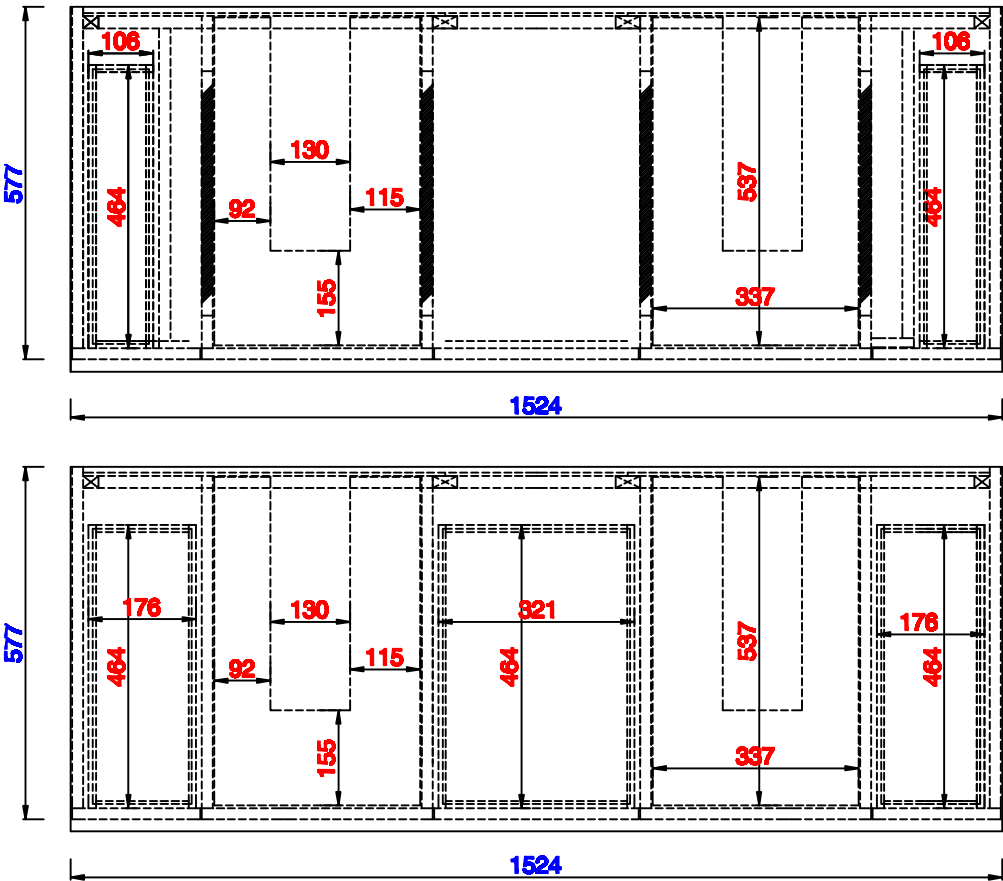


NOTE ONE: Countertops are not shown in these diagrams. (Cabinet Only)

NOTE TWO: This vanity does not have a Backsplash.

Please consult our website for Countertop Diagrams: [www.jamesmartinvanities.com](http://www.jamesmartinvanities.com)





NOTE ONE: Countertops are not shown in these diagrams. (Cabinet Only)


NOTE TWO: Internal Shelves (Shown) are designed to align with sinks in James Martin's Optional Countertops. Customers' own countertops and sinks may align differently, and modification may be required. Please consult our website for Countertop Diagrams: [www.jamesmartinvanities.com](http://www.jamesmartinvanities.com)

1524mm

Item Number:

860-V60D-CFO  
860-V60D-SOK

JAMES MARTIN

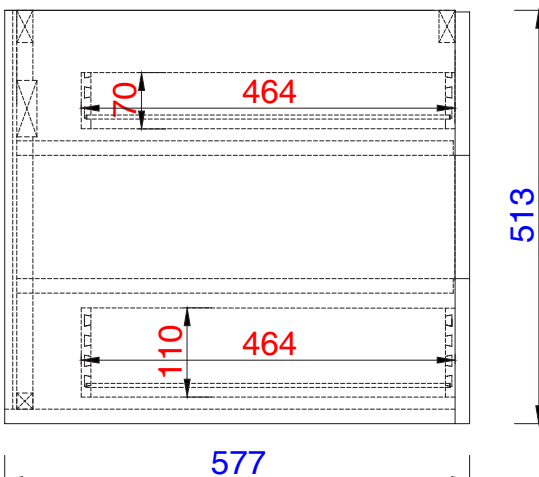


VANITIES™

Sonoma 1524mm Double Vanity

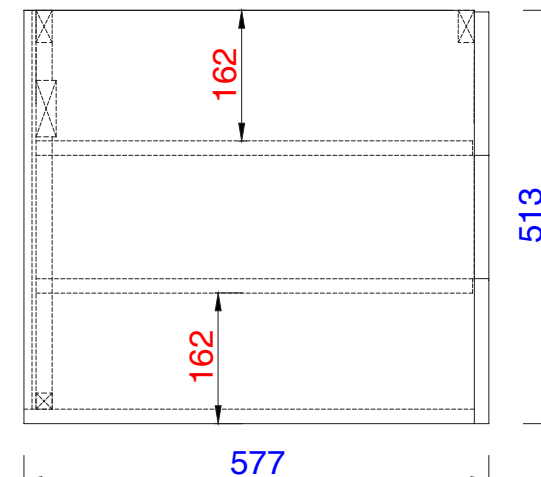
Diagrams with Dimensions  
page 03 of 03

577



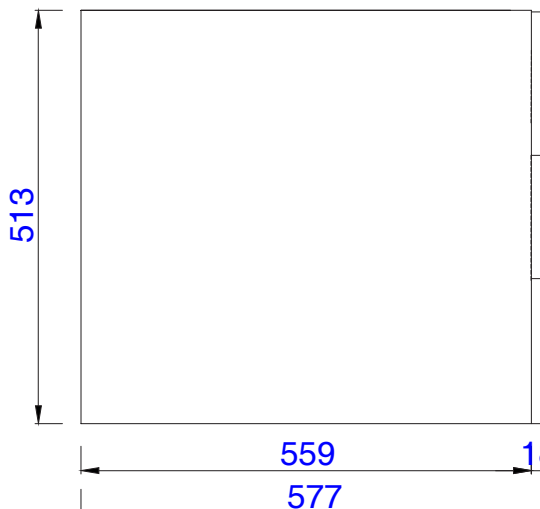
577

577



577

559



559

18

577

NOTE ONE: Countertops are not shown in these diagrams. (Cabinet Only)

NOTE TWO: This vanity does not have a Backsplash.

Please consult our website for Countertop Diagrams: [www.jamesmartinvanities.com](http://www.jamesmartinvanities.com)

Version: 201906