


ASSEMBLY INSTRUCTION

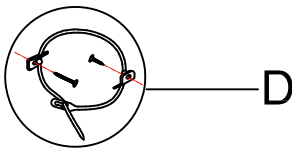
ITEM: 6700-90202-80 Nine Drawer Dresser
6700-90009-80 Mirror

Thank you for purchasing this quality product. Be sure to unpack carefully looking for small parts which may have come loose during shipment. Read all instruction and study the drawing carefully before starting the assembly process.

HARDWARE PACK				
NO.	DRAWING	DESCRIPTION	SIZE	Q'TY
A		Screw		18PCS
B		Hook	4*53mm	2PCS
C		Plastic Anchor	φ9*30mm	2PCS
D		Anti-Tip Kit		1PC

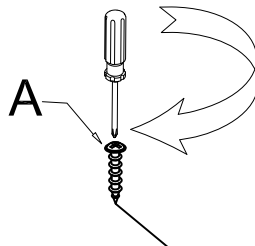
PART LIST			
NO.	DRAWING	DESCRIPTION	Q'TY
1		Mending Plate	2PCS

Anti-tip kit is included for use. We recommend installing for safety reason



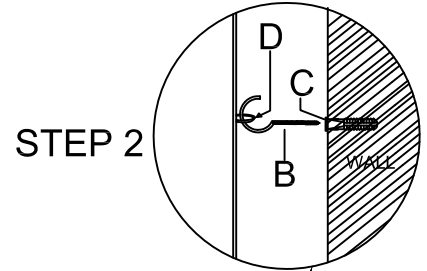
Tipping Restraint

screwdriver (not provided)

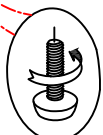
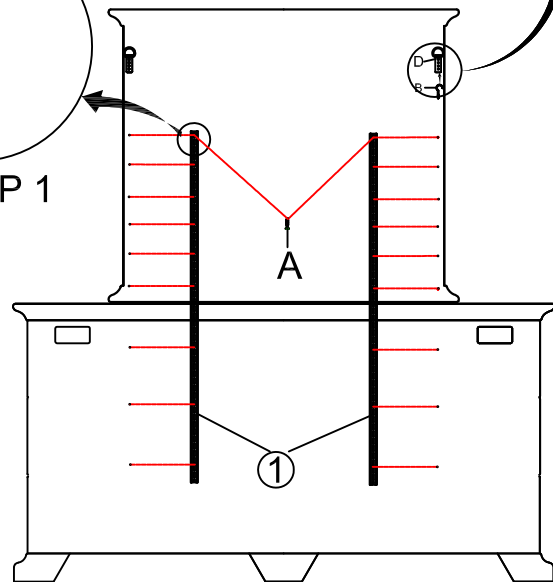
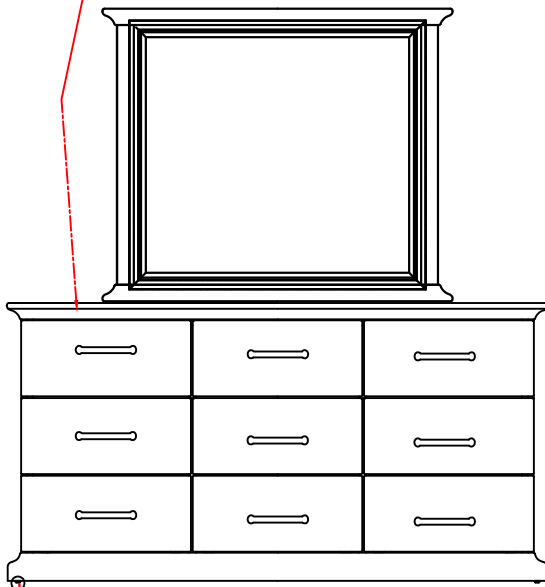


STEP 1

When using mirror only, hang the metal ring (D) onto the hook (B)



STEP 2



Adjust Leveler if needed to level case on uneven floor.

STEP 3

Note: Anti-tip kit restraint is provided. Please follow the instructions enclosed with the pack.