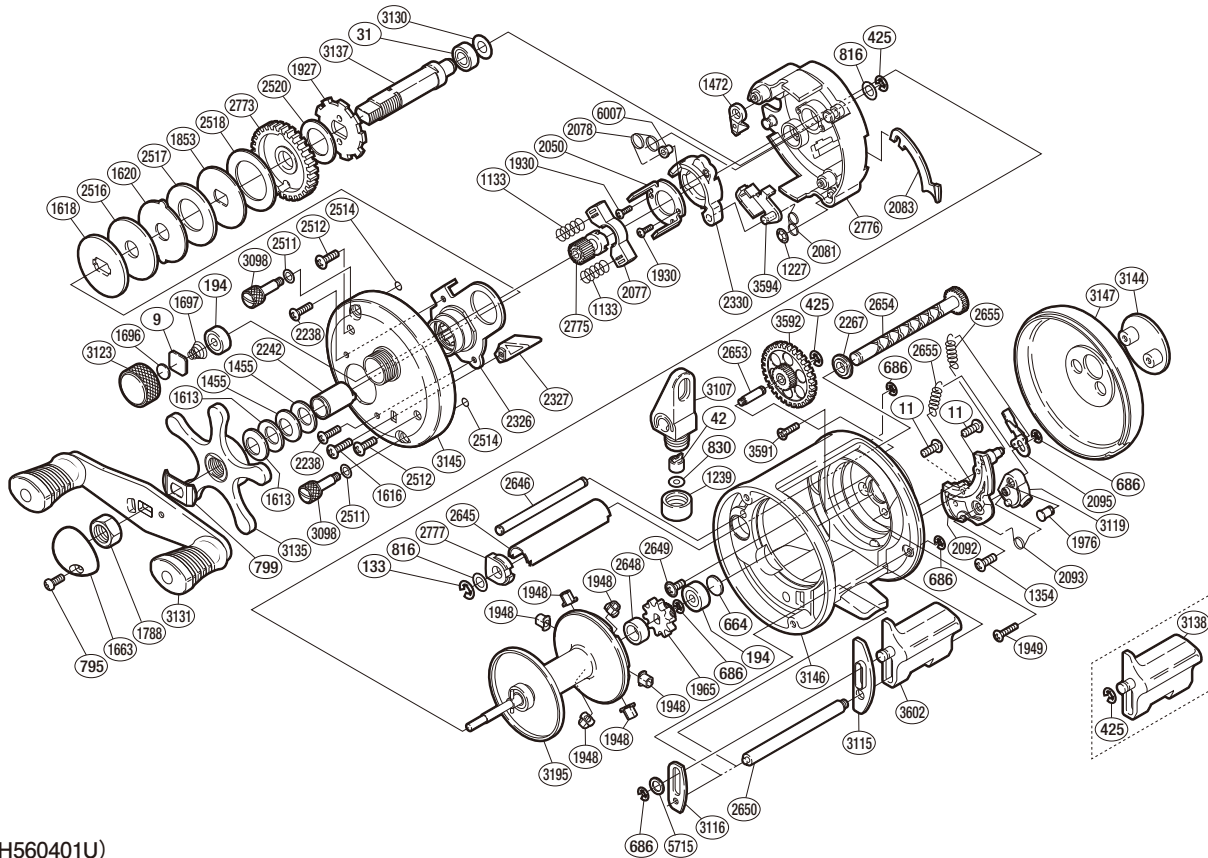


SHIMANO

CORVALUS

CVL-401



(51RH560401U)

#	Part No.	Description	#	Part No.	Description	#	Part No.	Description
9	105N0	Spacer	1948	10AH2	Brake Collar	2653	10NS0	Idle Gear B Shaft
11	10MT0	Screw	1949	10LSR	Screw	2654	10KC0	Worm Shaft
31	105BL	Ball Bearing	1965	10AQA	Idle Gear A	2655	10NRN	Click Spring
42	10FFZ	Line Guide Pawl	1976	10HRM	Click Shaft	2773	109D8	Drive Gear
133	105NJ	E Lock	2050	10MB9	Clutch Cam Retainer	2775	10AHA	Pinion Gear
194	105BX	Ball Bearing	2077	10N1K	Yoke	2776	10P6G	Set Plate
425	105NE	E Lock	2078	10N1N	Retractor Spring	2777	10HUF	Worm Bushing A
664	1057S	Spacer B	2081	10N21	Clutch Pawl Spring	3098	106BK	Side Plate Nut
686	105NK	E Lock	2083	10GB4	Clutch Plate	3107	10KCG	Line Guide
795	10QG1	Screw	2092	10F0B	Click Plate	3115	10GDR	Clutch Button Guide A
799	107QJ	Friction Washer	2093	10HRL	Click Switch Spring	3116	10GBF	Clutch Button Guide B
816	109F6	Washer	2095	1054B	Click Pawl	3119	10HQY	Click Switch
830	10TZF	Spacer	2238	10LF8	Screw	3123	106BS	Cast Control Cap
1133	104BL	Yoke Spring	2242	10MAR	Roller Clutch Inner Tube	3130	10HV5	Washer
1227	109H9	Push Nut (Spn-2)	2267	10HT2	Worm Bushing B	3131	10B13	Handle Assembly
1239	10BHU	Pawl Cap	2326	10NZD	Roller Clutch Assembly	3135	1082Q	Star Drag
1354	103C7	Screw	2327	10M5S	Return Pin Guide	3137	10MFW	Drive Shaft
1455	1052E	Drag Spring Washer H	2330	10LYQ	Clutch Cam	3144	10LH3	Side I.D. Plate
1472	10P1Y	Anti-Reverse Pawl	2511	10KF8	Washer	3145	10JD9	Left Side Plate
1613	10EW3	Drag Spring Washer L	2512	10LFB	Screw	3146	10LKS	One-piece Frame
1616	103GV	Screw	2514	10MB6	O Ring	3147	104TT	Right Side Plate
1618	10D4K	Key Washer C	2516	10CJG	Drag Washer AG	3195	10KEV	Spool Assembly
1620	10D48	Eared Washer	2517	1072B	Drag Washer CG	3591	10MLD	Screw
1663	10QBF	Handle Nut Plate	2518	10D2S	Drag Washer BG	3592	10EXC	Idle Gear B
1696	10896	Spacer	2520	10D2M	Drive Shaft Washer B	3594	10NZJ	Clutch Pawl
1697	10BRB	Spool Tension Spring	2645	10HVF	Level Wind Guard	3602	10TZK	Quick-Fire II Clutch Bar
1788	10FNL	Handle Nut	2646	10HW5	Stabilizer Bar	5715	10G6D	Washer
1853	10D47	Key Washer A	2648	10P6D	Idle Gear A Bush	6007	10F23	Retractor Spring Collar
1927	109BE	Anti-Reverse Ratchet	2649	10K8W	Screw			
1930	103NH	Screw	2650	10N4V	Clutch Button Support Bar			

Please note that the number of adjusting washers may not be the same as shown in the exploded views.
(Adjustment will vary with each individual product.)

(230809)_005