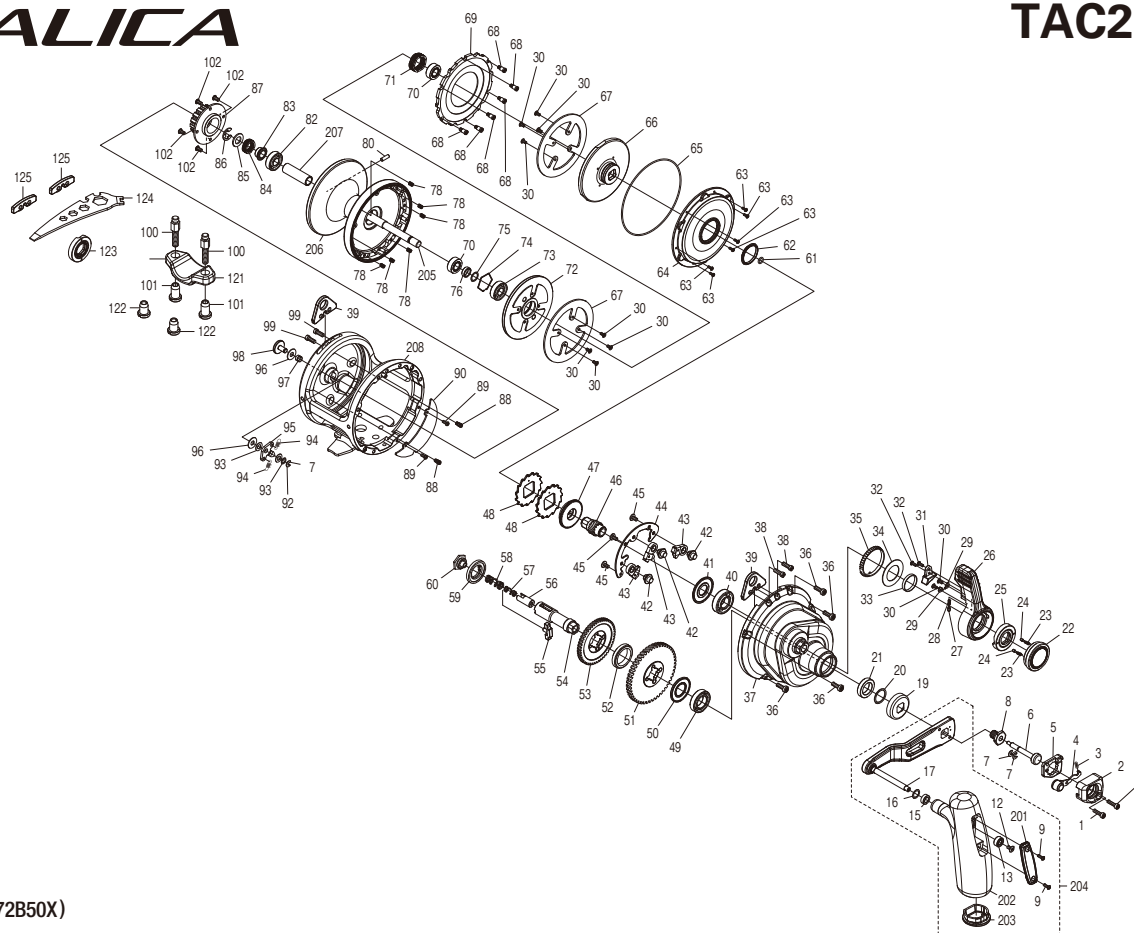


SHIMANO

TALICA

TAC25IIA



(51RJ372B50X)

#	Part No.	Description	#	Part No.	Description	#	Part No.	Description
1	13ZQG	Screw	41	141PP	Washer	78	10KJ6	Drag Plate Spring
2	13ZQH	Push Button Shield	42	10PFS	Anti-Reverse Pawl Pin	80	13ZRC	Cross Pin
3	10PWJ	Slide Plate Spring	43	10MWC	Anti-Reverse Pawl Assembly	82	104VJ	Ball Bearing
4	13ZRS	Slide Plate Assembly	44	10KVG	Anti-Reverse Pawl Keeper	83	13ZRF	Drag Spring Spacer
5	10PBN	Handle Nut Plate	45	1055F	Screw	84	13ZRG	Pressure Release Spring
6	109XB	Push Low Button Shaft	46	141PM	Pinion Gear A	85	13ZRH	Washer
7	105NK	E Lock	47	141PG	Pinion Gear B	86	105RZ	E Lock
8	106XP	Handle Bolt	48	10DAN	Anti Reverse Ratchet	87	141PQ	Click Gear
9	103NH	Screw	49	10KXA	Ball Bearing	88	108W4	Click Spring Shaft
12	103E9	Screw	50	13ZQW	Drive Gear Washer	89	10LVH	Screw
13	10EU0	Handle Knob Bushing A	51	141Q3	Drive Gear A	90	141QU	Set Plate Sticker
15	104UJ	Handle Knob Bushing B	52	10D61	Friction Washer	92	144C6	Washer
16	104FH	Washer	53	141Q5	Drive Gear B	93	10GA6	Spacer
17	14826	Handle Shank Assembly	54	10D6L	Drive Shaft	94	104B0	Click Spring
19	10KZS	Drive Shaft Shield	55	10KXH	Gear Select Cross Bar	95	10GQW	Click Pawl
20	10G9V	Washer	56	10KXL	Cross Bar Stop	96	104H2	Spacer
21	109AR	Drive Gear Bushing	57	109VM	Drive Shaft Spring B	97	104MS	Click Switch Cam
22	14828	Pre-Program Dial Assembly	58	10KXQ	Drive Shaft Spring	98	1459G	Click Button
23	10K07	Click Spring	59	10D5B	Friction Washer	99	10M6T	Screw
24	10JX6	Click Pin	60	10FCD	Drive Shaft Screw	100	10JBZ	Rod Clamp Bolt
25	141Q0	Lever Shaft Body	61	10EYZ	O Ring	101	145R5	Rod Clamp Nut
26	14829	Drag Control Lever Assembly	62	10EWA	Waterproof Ring	102	10LSQ	Screw
27	13ZQM	Lever Click	63	10PRU	Screw	201	144ZR	Handle Knob I.D. Plate
28	10C3X	Lever Click Shoe	64	141PR	Cooling Shield	202	144ZM	Handle Knob
29	13ZQN	Lever Click Cover	65	1090B	O Ring	203	144ZQ	Handle Knob Seal
30	10S65	Screw	66	141PN	Pinion Guard	204	1482C	Handle Assembly
31	141Q1	Lever Protector	67	141PT	Drag Washer	205	141PL	Spool Shaft
32	13ZQQ	Screw	68	141PS	Screw	206	14866	Spool Assembly
33	108DP	Lever Thrust Ring	69	141R4	Drag Plate	207	141R5	Spool Shaft Collar
34	10G6G	Washer	70	104Q5	Ball Bearing	208	1482D	Frame Assembly
35	10F6C	Lever Click Gear	71	13ZR5	Drag Spring			
36	13ZQR	Screw	72	141PU	Pressure Plate B	121	10AS1	Rod Clamp (Accessory)
37	1482A	A Side Plate Assembly	73	104VH	Ball Bearing	122	10JBX	Rod Clamp Bolt (Accessory)
38	10M6X	Screw	74	13ZR7	Bearing Retainer	123	141Q2	Light Line Cam (Accessory)
39	141PF	Harness Lug	75	141QS	Washer	124	10MJ8	Wrench (Accessory)
40	104JP	Ball Bearing	76	141R3	Bearing Spacer	125	141PC	Harness Lug Plug (Accessory)

Please note that the number of adjusting washers may not be the same as shown in the exploded views.
(Adjustment will vary with each individual product.)

(240412)_002