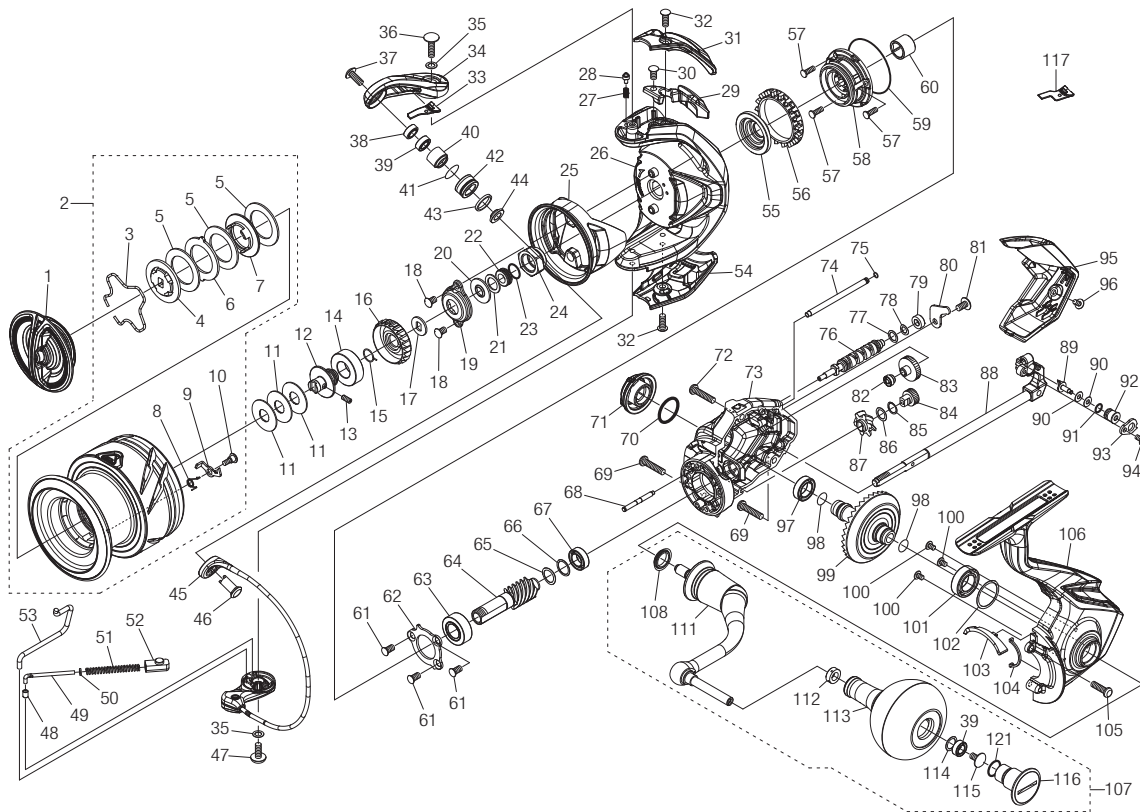


SHIMANO

STRADIC

ST-C5000XG



(51SF70JH49X)

Please note that the number of adjusting washers may not be the same as shown in the exploded views.
(Adjustment will vary with each individual product.)

#	Part No.	Description	#	Part No.	Description	#	Part No.	Description
1	13YX6	Drag Knob Assembly	43	10RFZ	Spacer	85	10TBA	Washer
2	13YY2	Spool Assembly	44	10TJM	Bearing Spacer	86	10G6D	Washer
3	10B8N	Retainer	45	141Q8	Bail Assembly	87	1006V	Idle Gear (Large)
4	10K3C	Key Washer B	46	10TPC	Line Roller Support	88	141Q9	Main Shaft Assembly
5	10R5H	Drag Washer A	47	10PS5	Screw	89	106JV	Oscillating Pawl
6	1427B	Eared Washer	48	1009B	Bail Spring Guide A Bush	90	1070D	Washer
7	10B9D	Key Washer	49	10DJN	Bail Spring Guide A	91	100WX	O Ring
8	10BQF	Drag Click Spring	50	101D9	Bail Spring Guide A Collar	92	1010C	Oscillating Slider Bushing
9	102H5	Drag Click	51	10RC7	Bail Spring	93	1010D	Oscillating Pawl Cover
10	10TRB	Screw	52	107AB	Bail Spring Guide B	94	10LCT	Screw
11	10BSL	Spool Washer	53	13YXD	Bail Trip Lever	95	1429B	Rear Protector
12	13YXH	Spool Bearing Bushing	54	14298	Bail Hold Support Guard	96	10PRZ	Screw
13	10PN3	Set Screw	55	101D5	Rotor Ring	97	107FA	Ball Bearing
14	10J3G	Bushing	56	10QXQ	Friction Ring	98	1009S	O Ring
15	107V2	Ratchet Spring	57	100WT	Screw	99	1429H	Drive Gear
16	107PS	Drag Click Ratchet	58	10S2L	Roller Clutch Assembly	100	1055H	Screw
17	103NY	Spool Support	59	1009Z	O Ring	101	107FB	Ball Bearing
18	103GW	Screw	60	1009Y	Roller Clutch Inner	102	100W9	Washer
19	1076N	Retainer	61	100WY	Screw	103	14282	Bail Trip Strike
20	10DY6	Bearing Water Proof	62	10DWD	Bearing Retainer	104	1009W	Flange Water Proof
21	100RU	Washer	63	10E7A	Ball Bearing	105	10L6G	Screw
22	13YXF	Main Shaft Collar	64	1429G	Pinion Gear	106	141QF	Side Cover Assembly
23	10DXE	O Ring	65	10E37	Washer	107	13YY4	Handle Assembly
24	13YXE	Rotor Nut	66	10GD9	Washer	108	10PXV	Handle Shaft Seal
25	14293	Rotor Brim	67	104JT	Ball Bearing	111	141QE	Handle Shank Assembly
26	14294	Rotor	68	13YXL	Idle Gear Shaft	112	10PXZ	Bushing
27	10HE7	Click Spring	69	10LZ6	Screw	113	141QG	Handle Knob Assembly
28	106ZC	Click Pin	70	108WH	O Ring	114	104FH	Washer
29	14295	Counter Weight	71	1427T	Handle Screw Cap	115	10LFA	Screw
30	103KS	Screw	72	1427R	Screw	116	13YY9	Handle Knob Seal
31	14296	Bail Spring Cover	73	1429A	Body	121	10LAA	O Ring
32	10PS7	Screw	74	13YXQ	Oscillating Guide			
33	13YXC	Bail Arm Fin	75	100BH	O Ring			
34	14297	Bail Arm	76	13YXM	Worm Shaft			
35	105AA	Washer	77	10K9C	Washer			
36	10DN9	Screw	78	10ECK	Washer			
37	10K9O	Screw	79	1009C	Bushing			
38	10E44	Collar	80	13YXP	Worm Shaft Retainer			
39	104VX	Ball Bearing	81	10QG5	Screw			
40	1009K	Bushing	82	13YXN	Bushing			
41	1009E	O Ring	83	10074	Idle Gear			
42	1009A	Line Roller	84	13YXK	Idle Gear (Small)	117	13YXU	Bail Arm Fin (accessory)