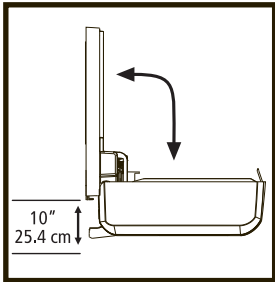


GOJO DPX™ DISPENSER INSTALLATION INSTRUCTIONS

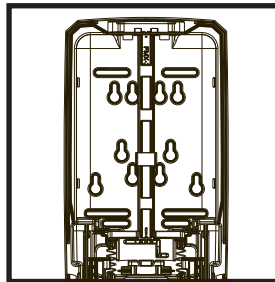
These instructions apply to the GOJO® brand DPX dispenser.

Please carefully read all instructions before installing and using the dispenser.

ATTENTION

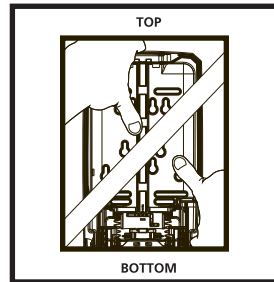


Install the dispenser at least 10" (25.4 cm) above counter top.



This dispenser is equipped with a universal back plate to allow for easy installation. Before drilling, open dispenser and check existing hard-ware on wall for alignment.

IMPORTANT NOTE

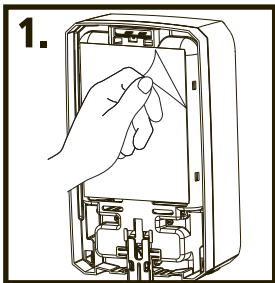


For proper dispenser tape adhesion: Press firmly all around backplate as shown in figure for 30 seconds.

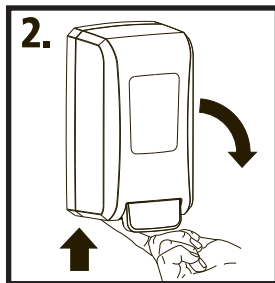
For maximum adhesion, do not load refill for 24 hours.

Tape Installation

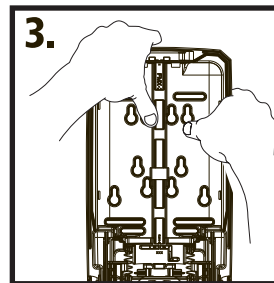
Should only be used for smooth, dry surfaces. Clean installation surface thoroughly. Allow surface to dry for 60 seconds. When installing on marlite wallboard, use scouring deansing. Rinse and dry thoroughly.



Peel paper off of installation tape and press dispenser firmly into position.



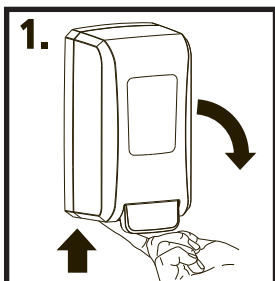
Press button on bottom of dispenser to open cover. Alternatively, use separate key tab to unlock cover.



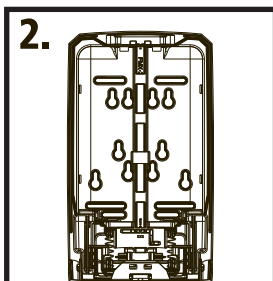
Press firmly on back plate for 30 seconds.

Fastener Installation

Can be used for installing dispenser on rough surfaces.



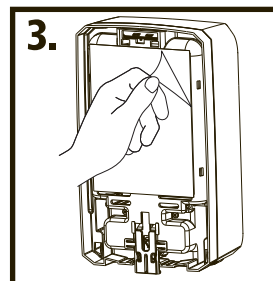
Press button on bottom of dispenser to open cover. Alternatively, use separate key tab to unlock cover.



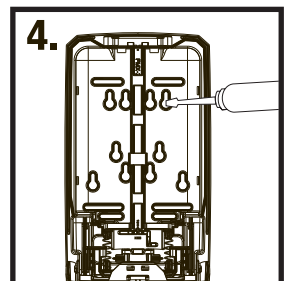
2a. Using Back Plate as template, mark and drill center holes in wall using 1/4" (6.3 mm) spiral masonry drill bit or 1/4" (6.3 mm) wood drill bit

2b. Install #10 x 1" (2.54 cm) anchors into drilled holes, flush against surface.

2c. Insert type A #10 x 1" (2.54 cm) fasteners into 4 installation holes in back plate, through installation tape.

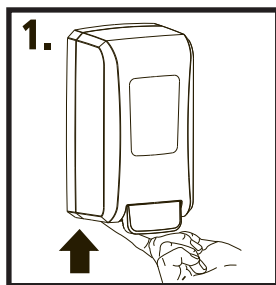


Peel paper off of installation tape and press dispenser firmly into position.

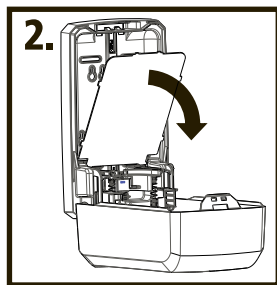


Tighten fasteners securely. Be careful not to over-tighten.

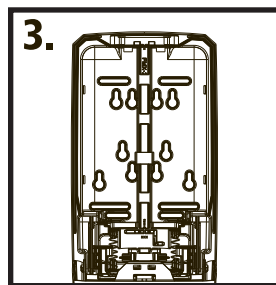
Fastener Installation for Dispensers with the Optional Screw Cover Plate



Press button on bottom of dispenser to open cover. Alternatively, use separate key tab to unlock cover.



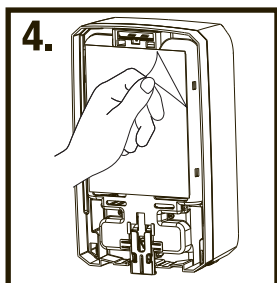
Unsnap and rotate screw cover plate downward to gain access to screw mounting holes.



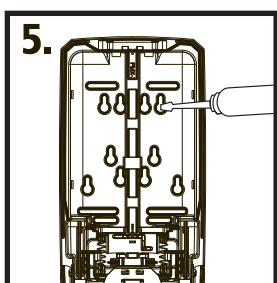
3a. Using Back Plate as template, mark and drill center holes in wall using 1/4" (6.3 mm) spiral masonry drill bit or 1/4" (6.3 mm) wood drill bit.

3b. Install #10 x 1" (2.54 cm) anchors into drilled holes, flush against surface.

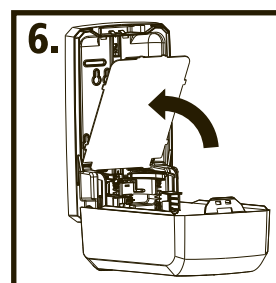
3c. Insert type A #10 x 1" (2.54 cm) fasteners into 4 installation holes in back plate, through installation tape.



Peel paper off of installation tape and press dispenser firmly into position.



Tighten fasteners securely. Be careful not to over-tighten.



Rotate screw cover plate upward to hide screw mounting holes.



GOJO Industries, Inc.
One GOJO Plaza, Suite 500
P.O. Box 991 • Akron, OH 44309-0991
Tel: 1-330-255-6000 • Toll-free: 1-800-321-9647
Fax: 1-800-FAX-GOJO

©2014. GOJO Industries, Inc. All rights reserved.