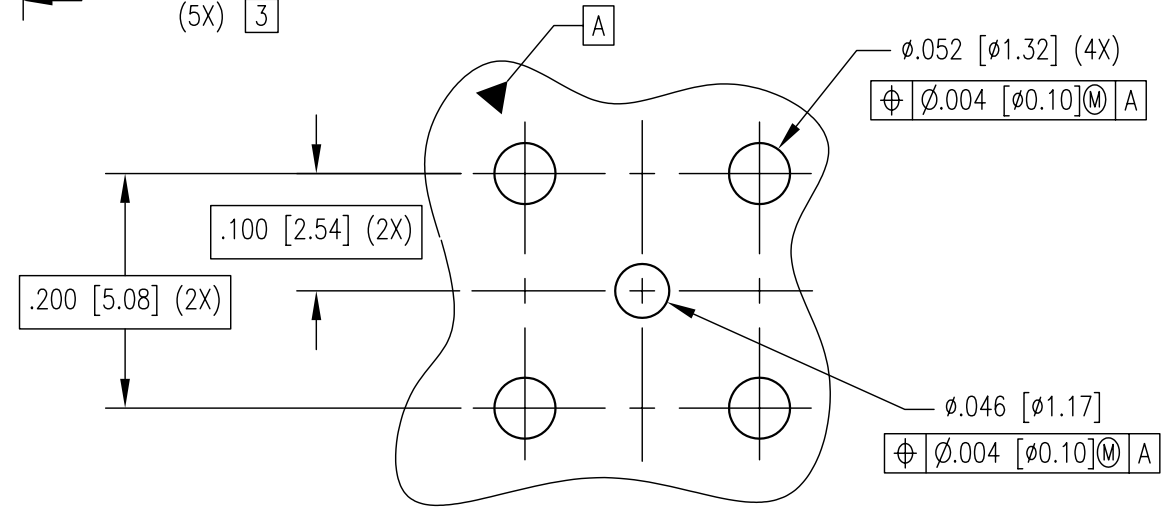
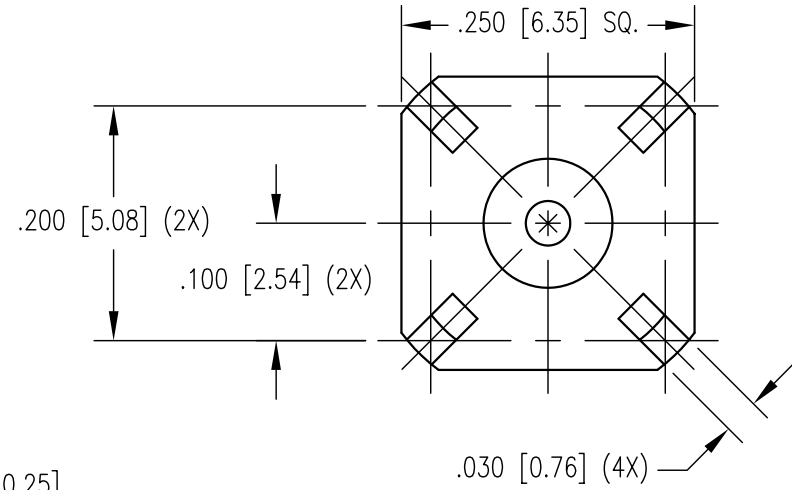
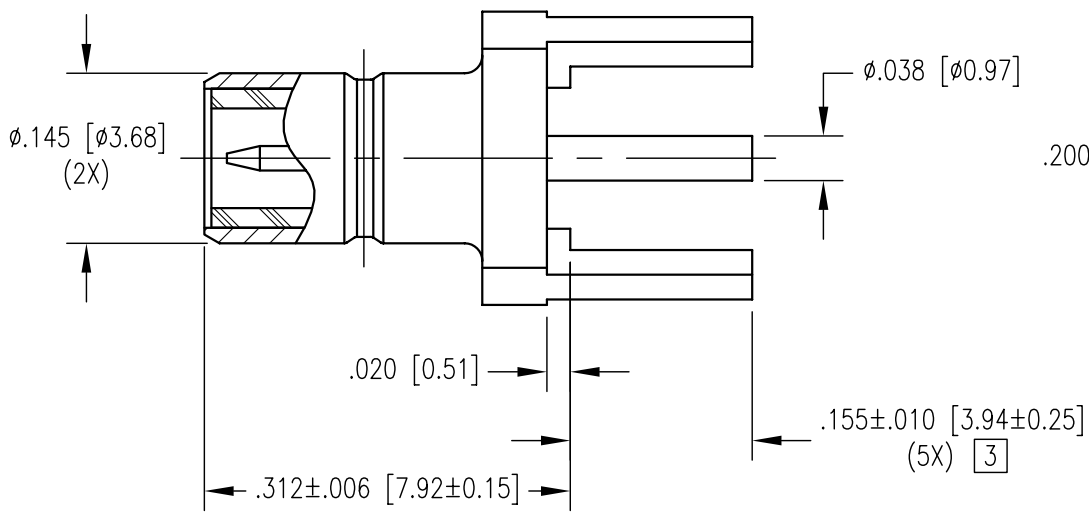


REV	DESCRIPTION	BY DATE	APPD
G	ECR 7769	JEM 06/23/03	JED



RECOMMENDED PCB LAYOUT

NOTES:

- MATERIALS:
 BODY AND CENTER CONTACT: BRASS PER ASTM B16
 INSULATOR: TEFLON PER ASTM D1710
- FINISH:
 BODY: .000015 MIN. GOLD PER MIL-G-45204 OVER
 .000100 MIN. COPPER PER MIL-C-14550
 CENTER CONTACT: .000030 MIN. GOLD PER MIL-G-45204 OVER
 .000100 MIN. COPPER PER MIL-C-14550
 [3] TIN DIPPED (LEGS AND CONTACT) TO DIMENSION SHOWN (5X).

PER ASME Y14.5M-1994
 UNLESS OTHERWISE SPECIFIED:
 DIMENSIONS ARE IN INCHES [MM]
 TOLERANCES:
 DECIMALS .XX ± .01/0.254
 .XXX ± .005/0.127
 ANGLES ± 2° SCALE: 6:1

CUSTOMER DRAWING		
DRAWN JEM 06/26/03	CHECKED CWB 7/15/03	
APPROVED JED 7/15/03	APPROVED MG 7/15/03	TITLE SMB JACK PC MOUNT

NORTHROP GRUMMAN	
Winchester Electronics 62 Barnes Industrial Road North Wallingford, CT 06492	
TITLE SMB JACK PC MOUNT	
A	SD511-060-0046J
SHT. 1	OF 1
REV. G	