

BOSS[®]
AUDIO SYSTEMS

BCAMW80 USER'S MANUAL
2-CHANNEL DASH CAM
WITH FRONT AND INSIDE CAMERAS
2" (51 mm) DISPLAY, FEATURING WI-FI/GPS
ANTENNA AND INCLUDES MICRO 16 GB SD CARD



Thank you for purchasing BCAMW80 Dual FHD 1920x1080 @30fps Digital Vehicle Dash Cam. Our series of Dash Cams have been designed specifically with ease of use in mind, it is recommended NOT to change the default settings, which have been carefully selected to give the best performance for day to day use.

INTRODUCTION OF USING A DASH CAM

Basic operation:

- The Dash Cam is set to record video, files of 3 minutes in length. This means that each video file is a manageable size should you need to download and send to your insurance company.
- Eventually your MicroSD card will fill up with video files but don't worry, the camera automatically overwrites the oldest file to make space for new recordings. This way you never run out of space and have plenty of driving historical evidence saved.

Automatic Start / Stop Technology:

- The Dash Cam senses power supplied to the cigarette lighter socket as soon as the vehicle ignition is turned on and will start to record automatically.
- When the ignition is turned off, the Dash Cam will perform an automatic shutdown process.

Tips for capturing best video footage:

- Position the Dash Cam in the centre of the windscreen and ideally behind the rear view mirror so it is not a distraction to the driver.
- Reduce the amount of sky in the picture, by angling the view of the camera towards the road. Too much sky will make the road appear darker due to the automatic exposure compensation.
- Remove unnecessary items from your dashboard. If objects are placed on your dashboard these can cause reflections to be seen on the windscreen and these reflections may be captured during recording.

Tips for stable memory card performance:

- Periodically reformat the memory card. Every 2-3 weeks we recommend that you reformat the memory card. This will wipe any files from the card and set it up afresh for continued use with your Dash Cam.
- Of course, you should only do this AFTER you've downloaded any files from the card that you may want to keep, as formatting the card will remove all content.
- Format your memory card using the Dash Cam. This will make sure that the card is structured specifically for your camera. Press MENU twice and choose the Format Card option. Follow the on-screen instructions accordingly.
 - To prevent the chance of damage being caused to the memory card or the files stored upon it, turn OFF the Dash Cam before removing or inserting the memory card.

PRECAUTIONS

Please read this manual carefully before operation and keep it for future reference. It will be helpful should you encounter any operational problem.

WARNING: Do not expose this product to rain, moisture or water under any circumstances, doing so may result in the risk of electric shock or fire.

CAUTION: To reduce the risk of electric shock, do not perform any servicing other than that contained in the instruction manual unless you are qualified to do so.
Have the unit serviced by a qualified service technician if;
The Unit has been exposed to rain or water.
The unit does not seem to operate normally.
The unit exhibits a marked change in performance.

CHOKING HAZARD: Some Products may contain components that are small enough to be swallowed. Please keep out of reach of children.

CAUTIONS OF USING A DASH CAM

1. Ensure that the windscreen is free of dirt or grease before placing mount upon it.
2. Do not obscure the view of the road ahead or impede the deployment of any airbags in the event of an accident.
3. When not in use, please disconnect the car adaptor from both the 12/24Vdc outlet in your vehicle and the device itself.
4. Only clean the device with a soft dry cloth, for tough dirt, apply some neutral detergent diluted in 5 to 6 parts water to a soft cloth.
Note that alcohol, thinner, benzene etc could cause damage to the paint or coatings.
5. Avoid making contact with the lens as damage may be caused.
6. If required clean the glass lens carefully using spectacle lens cleaning fluid on a soft cloth only.
7. The video recordings made by this Digital Video Recorder are intended for personal use only.
8. While driving, do not adjust the controls of your device as this is distraction to driving.
9. Do not try to open the cover or try to repair it yourself. If the accessories for this device have any problem, please contact the seller for assistance.
10. Do not use the charger if the cord is broken or damaged.
11. Do not leave the camera in the direct sunlight for a long period of time or where the temperature could go above 140°F (60°C)

TABLE OF CONTENTS




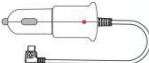



INTRODUCTION OF USING A DASH CAM.....	03
CAUTIONS OF USING A DASH CAM.....	04
TABLE OF CONTENTS.....	05
PRODUCT SPECIFICATION.....	06
PACKAGE CONTENTS.....	07
PRODUCT FEATURES.....	07
CAMERA - PARTS & CONTROLS.....	08
IN VEHICLE INSTALLATION.....	11
VIDEO MODE.....	12
PHOTO MODE.....	16
PLAYBACK MODE.....	19
SETUP MENU.....	21
BCAM PLAYER.....	24
B/CAM APP FOR IOS & ANDROID (INSTALLATION).....	25
B/CAM APP FOR IOS & ANDROID (OPERATION).....	26
TROUBLESHOOTING.....	27

PRODUCT SPECIFICATION

Model Number	BCAMW80
Image Sensor	2.0MP Sony Exmor IMX323 CMOS Sensor (front) 2.0MP Sony Exmor IMX323 CMOS Sensor (inside)
Lens Type / Angle / Aperture	6G / 150° / F1.8
Video Resolution	1920x1080 @30fps (front) + 1920x1080 @30fps (inside)
Photo Resolution	12M / 10M / 8M / 5M
Screen Size	2.0" 4:3 HD Screen
File Format	Video: MP4 (H.264) / Photo: JPG
Set IR Light	Auto / On/ Off
Loop Recording	Support
G-Sensor	Support
Motion Detection	Support
WDR	Support
Record Audio	Support
Date Stamp	Support
Number Plate	Support
WiFi	APP "B/CAM" (iOS & Android)
GPS	GPS Coordinate,Speed,Date and Time (included)
SD Card (Recommended)	MicroSD C10, up to 128G (16G MicroSD card included)
SD Card Capacity (based on default settings)	8GB MicroSD = 30 minutes of recording 16GB MicroSD = 60 minutes of recording 32GB MicroSD = 120 minutes of recording 64GB MicroSD = 240 minutes of recording 128GB MicroSD = 480 minutes of recording
Power Supply	Input: 12-24V / Output: 5V 2A
Battery	2.7V / 7F
Storage Temperature	- 25°C ~ + 70°C
Operating Temperature	- 20°C ~ + 60°C
Unit Dimension	123 x 65 x 36mm
Unit Weight	94g

PACKAGE CONTENTS

Please check the contents of your BCAMW80 product package. The actual products might appear slightly different from pictures shown below.

 BCAMW80 DashCam	 Windshield Mount	 Adhesive Sticker x2	 Car Charger
 Instruction Manual	 GPS Module	 16G Micro SD card	

PRODUCT FEATURES

2.0" 4:3 HD Screen

Provide instant video/photo playback and make the device efficient for adjusting settings.

2.0MP Sony IMX323 Image Sensor

Record high quality video in Full HD with perfect sharpness and clarity of an image, enabling you to capture every detail of your trip.

Dual-Channel Recording

Capture the road ahead and interior of your vehicle with dual 150° wide angle lens.

G Sensor / File Protection

In the event of an impact the device will automatically 'protect' the recording, stopping the file from being over-written. This can also be performed manually, by pressing the 'up' button during recording. Individual files can also be 'protected' when viewed within playback mode.

WiFi

You can easily view real-time recording, manage files, change settings.

GPS Logger

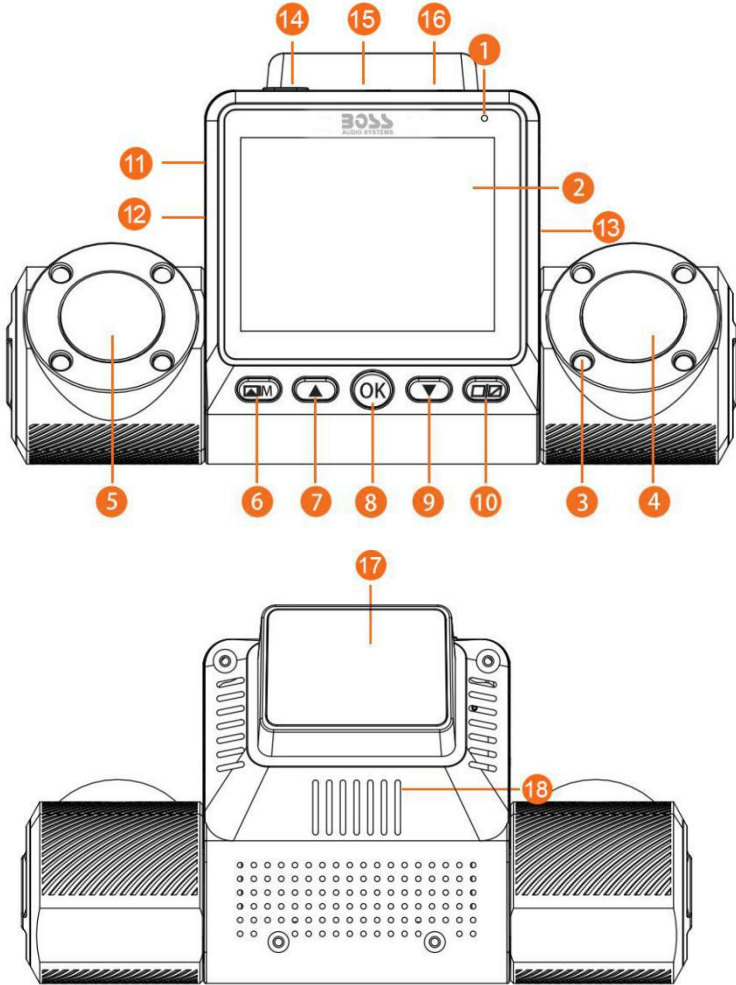
GPS co-ordinates, date and time are recorded, the journey can then be viewed using the download-able PC playback software.

Supercapacitor

Compared to battery, capacitor performs more resistant of high/low temperature and longer lifetime.

CAMERA- PARTS & CONTROLS(CONTD.)

Please see below to identify the parts and controls of your Dash Cam.



1. Indicator Lights

Standby status: Red light (On), Blue light (On).
Recording status: Red light (On), Blue light (Flash).

2. Screen

2.0' LCD colour screen for the viewing of recorded files on the Dash Cam.

CAMERA - PARTS & CONTROLS(CONTD.)

Continued from previous page.

3. Infrared Lights

4pcs IR LED lights for low light conditions and ensures flawless video footage even when the passenger cabin is dark.

4. Inside Camera lens

Wide Angle 150°, F/1.8 aperture and 6 Element glass lens with Sony IMX323 sensor for optimum picture quality inside of your vehicle.

5. Front Camera Lens

Wide Angle 150°, F/1.8 aperture and 6 Element glass lens with Sony IMX323 sensor for optimum picture quality ahead of your vehicle.

6. Menu / Mode

Press shortly to open the menu within current mode, press twice to open the Setup menu. Press and hold to change among video, photo and playback modes.

7. Up / Protect File

Up: Press to navigate up within menus and to move to the previous file when in playback mode.

Protect File: Press whilst recording to protect the current file in event of an emergency situation.

8. Record / OK

Record: Press to start or stop a recording when in video mode, or take a photo when in photo mode.

OK: Press to confirm selection when in menus..

9. Down / Microphone Off

Down: Press to navigate down within menus and to move to the next file when in playback mode.

Microphone Off: Press to turn off /on the microphone (audio recording), only available whilst in video mode.

10. Camera Switch

Press to switch the display mode of front camera and inside camera.

11. MicroSD Card slot

Insert the MicroSD card here, making sure that the card is inserted into the Dash Cam in right direction.

CAMERA - PARTS & CONTROLS(CONTD.)

Continued from previous page.

12. Reset

In the unlikely event the Dash Cam becomes unresponsive, press the RESET button to restart the Dash Cam.

13. Microphone

Integral microphone for audio recording.

14. Power On / Off

Press and hold for 3 seconds to turn on / off the Dash Cam.

15. DC-IN & USB socket

Connect the supplied car power cable here.

16. GPS

External GPS module for tracking the driving route, speed, date and time.

17. Windshield Mount

Mounted on the windshield of your vehicle with strong adhesive sticker.

18. Heat Dissipating Hole

Dissipate heat from the dash cam while recording.

IN VEHICLE INSTALLATION

Please follow the instructions below for first-time installation of the Dash Cam. For day to day use simply remove the camera from the mount as required.

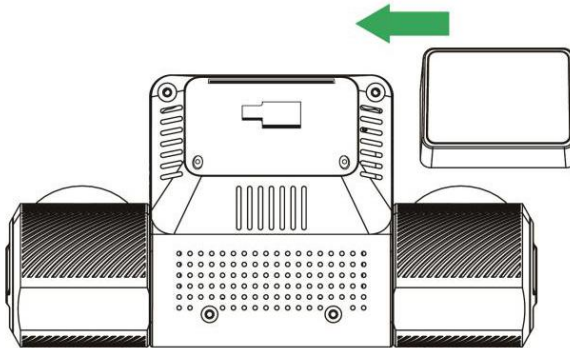
1. Insert MicroSD Card

Making sure that the gold contacts are facing towards the Mount side of the Dashcam. Push the memory card until it clicks into place. Do not remove or insert the memory card when the Dash Cam is turned on. This may damage the memory card.

2. Attach the mount to the Dash Cam

3. Attach the mount to the windshield

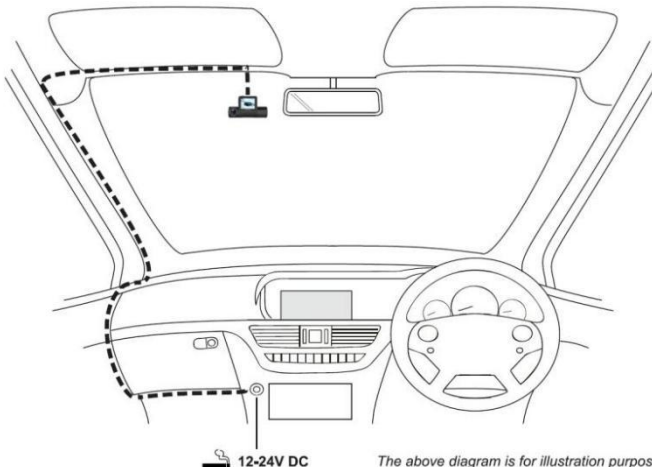
Remove the adhesive sticker film from the mount. Select a suitable position for the mount and clean the windshield with a dry/clean cloth to achieve a good contact between the glass and mount.




4. Connect car power cable

Plug the power cable into the 12-24V DC outlet of your vehicle.

The Dash Cam will automatically power on and start recording once power is available.

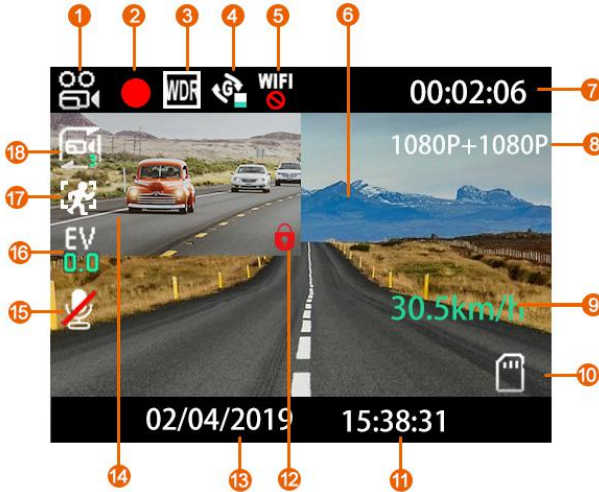


 12-24V DC

The above diagram is for illustration purposes only.

VIDEO MODE

The key below explains the various information displayed on the screen when your Dash Cam is in Video mode, some icons will only be displayed once the relevant function has been selected within the Video menu, as described below.



1. Mode: indicates the Dash Cam is in Video mode.
2. Recording: appears on screen when recording is in progress.
3. WDR: shown on screen when it's set to be ON.
4. G-sensor: shown on screen the sensitivity of G-sensor.
5. WiFi: shown on screen of WiFi function.
6. Front Camera: real time display of front camera.
7. Elapsed time: displays the elapsed time for the current video.
8. Resolution: displays the current resolution of both camera.
9. GPS: appears on screen in red of 0km/h when Dash Cam locates satellites. The word of speed will turn green when stable signal is received.
10. Memory Card: indicates whether a memory card is present.
11. Time: current time.
12. Protected: shown on screen when a video file has been protected by activation of the G Sensor or by the pressing of the file protect button.
13. Date: current date.
14. Inside Camera: real time display of inside camera.
15. Microphone: displayed on screen when Audio Recording is active.
16. Exposure: displays current Exposure level setting.
17. Motion Detection: shown on screen when a video starts from detecting by moving.
18. Video Length: displays the length of the individual recordings in minutes.

The default settings within the Dash Cam have been set to allow you to use the Dash Cam without the need to change any settings. See next pages for video menu settings, should you want to make any adjustments however.

VIDEO MODE (CONTD.)

Video Menu

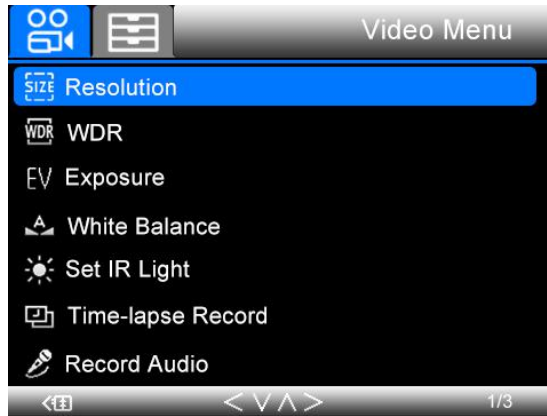
The Video Menu is accessed by pressing the MENU button whilst in video mode.

Use the up and down buttons to highlight the function that you'd like to change and press the OK button to enter the settings sub-menu.

Once in the sub-menu, use the up and down buttons to highlight the required setting and then press OK to confirm your selection and return to the Video Menu.

Press the MENU button twice to return to video mode.

Note: Menus are not accessible whilst the Dash Cam is recording.



1. Resolution

Select recording resolution, this will increase/decrease quality of the recorded video.

Options: 1080P+1080P, 1080P+720P, 720P+1080P, 720P+720P
Default Setting: 1080P+1080P

2. WDR

Select for avoiding high exposure and low exposure.

Options: On, Off
Default Setting: On

3. Exposure

Adjust exposure level for different light conditions.

Options: +3, +2, +1, 0, -1, -2, -3
Default Setting: 0

4. White Balance

Adjust the white balance for different light conditions.

Options: Auto, Daylight, Cloudy, Tungsten, Fluorescent
Default Setting: Auto

VIDEO MODE (CONTD.)

Continued from previous page.

5. Set IR light

Select for increasing brightness and improving the quality of video/photo in dark environment.

Options: Auto, On, Off

Default Setting: Auto

6. Time-lapse Record

Time Lapse recording is a technique whereby the frequency at which file frames are captured (frame rate) is lower than that used when playing back the recording.

Time Lapse recording can be considered the opposite of slow motion, as when the recording is played back time appears to be moving faster.

For example, a recording taken over three minutes would be played back as a 30 second movie.

Options: Off, 1 Second, 5 Seconds, 10 Seconds

Default Setting: Off

Note:

- It is recommended to use a high-capacity SD Card (min 16G) for Time Lapse recording.
- Time lapse is considered as a leisure activity setting and not for use in order to collect evidence in the case of an incident / accident. Time Lapse should be turned off for normal driving conditions.
- The options of 1 second, 5 seconds and 10 seconds are the recording duration, NOT the playback time. Playback time will be 1/6th of the live recording time.

7. Record Audio

Turn On / Off the microphone.

Options: On and Off

Default Setting: On

8. Date Stamp

Turn On / Off the time and date stamp shown on recorded files.

Options: Off and On

Default Setting: On

9. Loop Recording

Select the duration of the individual recorded video files. The Dash Cam will continue recording, filling the memory card. When the memory card becomes full, the oldest file will be automatically deleted to make space for the new recording.

Note:

- Protected files will never be deleted.

Options: 2 Minutes, 3 Minutes and 5 Minutes

Default Setting: 3 Minutes

VIDEO MODE (CONTD.)

Continued from previous page.

10. G-Sensor

Turn Off or adjust the sensitivity of the built in G Sensor. The G Sensor detects forces which will automatically protect the current recording in event of a collision.

Options: High, Medium, Low and Off

Default Setting: Medium

11. Motion Detection

Turn On / Off the motion detection function. The camera will need to remain on and will start a 10 seconds recording when a change to the viewed scene is detected.

Options: Off and On

Default Setting: Off

12. Number Plate

Enter the registration number for your vehicle, this will then be shown on the video file.

13. Fatigue Driver

Select the timer which will display an image of a hot beverage to serve as a reminder to take sufficient rest when on a long journey.

Options: Off, 1 Hour, 2 Hour, 3 Hour and 4 Hour

Default Setting: Off

14. GPS Stamp

Turn On/Off the GPS co-ordinates and speed will be shown on recorded files. When a recording is viewed using the supplied playback software both the GPS co-ordinates and speed information remains available.

Options: Off and On

Default Setting: On

15. Speed Units

Select whether to record and display speed in KMH or MPH.

Options: KMH and MPH

Default Setting: MPH

16. Rearcam Mirror

Select which image mode to check, Mirror mode or normal mode.

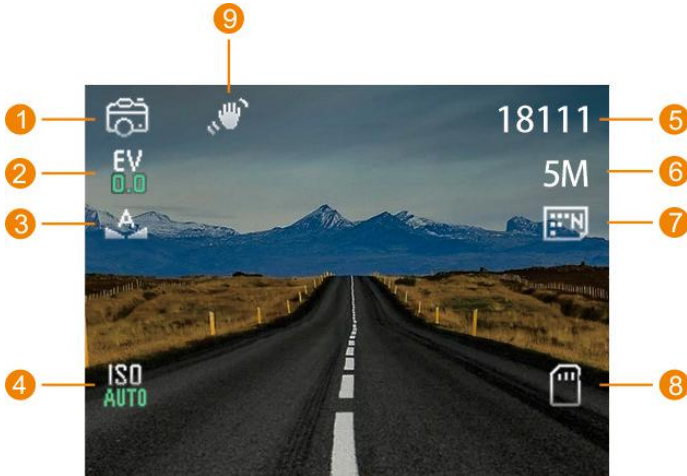
Options: Off and On

Default Setting: Off

PHOTO MODE

Press and hold the MODE button in order for the unit to switch over to Photo Mode.

The key below explains the information displayed on the screen when your Dash Cam is in Photo mode.



1. Mode: indicates the Dash Cam is in Photo mode.
2. Exposure: displays current Exposure level setting.
3. White Balance: displays current color of photos.
4. ISO: displays current Sensitive level setting.
5. Available Quantity to Capture: indicates available quantity to capture photos.
6. Image Size: displays current image resolution.
7. Quality: displays current Quality level setting.
8. Memory Card: indicates whether a memory card is present.
9. Anti-Shaking: indicates the Dash Cam is in Anti-Shaking mode.

See next pages for photo menu settings

PHOTO MODE (CONTD.)

Photo Menu

The Photo Menu is accessed by pressing the MENU button whilst in photo mode.

The default settings have been carefully selected to allow you to use the Dash Cam without need to change any settings. However, should you wish to change a setting please see below.

Use the up and down buttons to highlight the function that you'd like to change and press the OK button to enter the settings sub-menu.

Once in the sub-menu, use the up and down buttons to highlight the required setting and then press OK to confirm your selection and return to the Photo Menu.

Press the MENU button twice to return to photo mode.



1. Image Size

Select to increase or decrease the size of recorded image.

Options: 12M, 10M, 8M and 5M

Default Setting: 5M

2. Color

Select to adjust the color effect of recorded image.

Options: Normal, Black & White, Sepia

Default Setting: Normal

3. Anti-Shaking

Turn On / Off to help reduce image being blurred under some circumstances.

Options: On and Off

Default Setting: On

PHOTO MODE (CONTD.)

Continued from previous page.

4. **Capture Mode**

Select the timer, the camera will take a photo the selected period of time after the OK button has been pressed..

Options: Single, 2S Timer, 5S Timer and 10S Timer
Default Setting: Single

5. **White Balance**

Adjust the white balance for different light conditions.

Options: Auto, Daylight, Cloudy, Tungsten and Fluorescent
Default Setting: Auto

6. **ISO**

Adjust the ISO setting, the brighter the conditions the lower the ISO required.

Options: Auto, 100, 200 and 400
Default Setting: Auto

7. **Exposure**

Adjust exposure level for different light conditions.

Options: +3, +2, +1, 0, -1, -2, -3
Default Setting: 0

8. **Date Stamp**

Turn On / Off the time and date stamp shown on recorded image.

Options: Off, Date, Date/Time
Default Setting: Date/Time

9. **Quality**

Select to increase or decrease the quality of recorded image.

Options: Fine, Normal and Economy
Default Setting: Normal

10. **Sharpness**

Adjust the sharpness of recorded image.

Options: Strong, Normal and Soft
Default Setting: Normal

PLAYBACK MODE

Press and hold the MODE button in order for the unit to switch over to Playback Mode, the Dash Cam will display the last recorded file.

Video Files:



1. File type: indicates a video file is being viewed.
2. File number: displays current file number.
3. Video resolution: show video resolution.
4. Elapsed time: Displays the elapsed time for the video being watched.
5. Memory Card: indicates whether a memory card is present.
6. Date/Time: displays date that the current file was recorded; displays the start time that the current file was recorded.
7. Date / Time Stamp: indicates the date / time stamp of recorded file.
8. Play from beginning: Press MENU button for 2 seconds to back to beginning of recorded file. Press OK button to replay.
9. UP: use UP button to select the previous file once playback has been stopped. During playback press UP button to rewind, press Down button to cancel.
10. Play / Pause: Press OK button to play / pause playback.
11. Down: use Down button to select the next file once playback has been stopped. During playback press Down button to fast forward, press UP button to cancel.
12. Protected file: indicates that the video file is protected.

PLAYBACK MODE

Photo Files:



1. File type: indicates a photo file is being viewed.
2. White Balance: displays current color of photos.
3. File number: displays current file number.
4. Photo resolution: shows photo quality resolution.
5. Quality: displays current Quality level setting.
6. Sharpness: displays current Sharpness setting.
7. Memory Card: indicates whether a memory card is present.
8. Date/Time: displays date that the current file was recorded; displays the start time that the current file was recorded.

Deleting files: Highlight the Delete Files option and press the OK button.

This will then give you two options:

1. Delete Current?: Once selected, press OK button to delete the current file.
2. Delete All?: Once selected, press OK button to delete the current file.

Note: Protected files cannot be deleted.

Protecting files: Highlight the Protect Files option and press the OK button.

This will then give you four options:

1. Lock Current: Once selected, press OK button to Lock the current file.
2. Unlock Current: Once selected, press OK button to Unlock the current file.
3. Lock All: Once selected, press OK button to Lock all files.
4. Unlock All: Once selected, press OK button to Unlock all files.

Slide Show: Highlight the Slide Show option and press the OK button.

This will then give you three options:

1. 2 Seconds: Once selected, press OK to Slide Show the recorded file every 2 seconds.
2. 5 Seconds: Once selected, press OK to Slide Show the recorded file every 5 seconds.
3. 8 Seconds: Once selected, press OK to Slide Show the recorded file every 8 seconds.

SETUP MENU (CONTD.)

Setup Menu

The Setup Menu is accessed by pressing the MENU button twice.

The default settings have been carefully selected to allow you to use the Dash Cam without the need to change any settings. However, should you wish to change a setting then please see below.

Use the up and down buttons to highlight the function that you'd like to change and press the OK button to enter the settings sub-menu.

Press the MENU button to return to video mode.



1. WiFi

Wi-Fi allows you to view videos while recording, adjust the setting, control the basic functions (record, play, pause, etc.) and playback videos directly to your smartphone.

Options: Off and On
Default Setting: Off

2. Format SD Card

Format the inserted memory card, this will delete all content.

Note: For stable performance, it is recommended that you format the memory card every 2-3 weeks. Of course, you should only do this AFTER you've downloaded any files from the card that you may want to keep.

3. Language

Select preferred language.

Options: English, French, German, Spanish, Italian, Dutch, Hebrew, Japanese, Arabic
Default Setting: English

SETUP MENU (CONTD.)

Continued from previous page.

4. **Date / Time**

Adjust the date / time as required using the OK button to toggle through the fields and use the up & down buttons to set variables. Press MENU to exit and return to the Setup Menu.

5. **Time Zone**

The Time and Date are automatically set based on the Country selected from within the First Time Use menu.

The Time Zone options are used should you want to manually select a Time Zone that falls outside of the available Country options.

6. **Frequency**

Set the frequency based on your Country standard.

Options: 50Hz and 60Hz

Default Setting: 60Hz

7. **Beep Sound**

Turn On / Off the Beep Sound. Note if Beep is turned off the audible low-battery warning will also be disabled.

Options: On and Off

Default Setting: On

8. **Screen Save**

Turn on the Screen Saver function to shut down the screen after a period of button inactivity, press any button to re-activate the display.

Options: Off, 10 Seconds, 30 Seconds and 2 Minutes

Default Setting: 2 Minutes

9. **Speed Stamp**

Turn On / Off the Speed Stamp shown on recorded files.

Options: On and Off

Default Setting: On

10. **Version**

The model number and installed Firmware version of your Dash Cam is displayed here.

11. **Default Setting**

Reset the Dash Cam to the default settings.

BCAM PLAYER

The BCAM Player Software is available to download in below links.

MAC version: https://www.bosssaudio.com/software/BCAMW80_PLAYER_MAC.zip

Windows version: https://www.bosssaudio.com/software/BCAMW80_PLAYER_Windows.zip

It is designed to enable the viewing of recorded files as well as checking journey route / GPS data (location and speed) and G-Sensor information. The key below explains the various information displayed within the BCAM Player.



1. Playback window of selected video file

View current video. To make full screen double-click the top of the windows.

2. Volume

Adjust playback volume.

3. G-Sensor Data

Displays data recorded by the G-Sensor across the three axis.
X = left / right, Y = up / down, Z = acceleration / deceleration

4. Add Files

Select to add videos from files stored on your computer to the BCAM Player.

5. Delete Files

Delete the videos from file list on the BCAM Player.

6. Map

Displays route travelled on map. Only available when the video files were recorded when satellite connection was present.

B/CAM APP FOR IOS & ANDROID (INSTALLATION)

The Wi-Fi function allows you to use your smartphone to view videos during recording, adjust the device settings, control the basic functions (record, play, pause, etc.) and playback videos directly to your smartphone.

The B/CAM APP is available for free download from App Store of iPhone and Google Play Store of Android smartphones.

Installing the App on an iOS smartphone:

Open the App Store on your iOS smartphone and search for the “B/CAM” App, tap on “Get” to install. You can also scan the QR code below to download and install the “B/CAM” App. Once installed, the B/CAM App will be available on the home screen of your phone.

Installing the App on an Android smartphone:

Open the Google Play Store on your Android smartphone and search for the “B/CAM” App, tap on “Install” and then “Accept”. You can also scan the QR code below to download and install the “B/CAM” App. Once installed, the B/CAM App will be available on the home screen of your phone.



QR code for iOS



QR code for Android

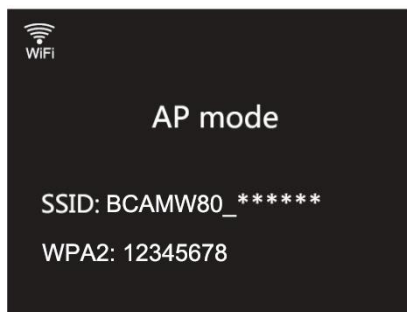


B/CAM App

Turn on the Wi-Fi

To turn on the Wi-Fi function on the camera, go to the General Settings menu, select “Wi-Fi” and press OK. The “On” option will be highlighted, press OK button to confirm.

The menu window will close and the “AP Mode” (Access Point Mode) will open, as shown below.



B/CAM APP FOR IOS & ANDROID (OPERATION)

Connect your phone to the camera

To connect your phone to the camera open the Wi-Fi connections menu on your phone, the camera will be shown in Wi-Fi network list as “BCAMW80_*****”.



Tap on the “BCAMW80_*****” and when prompted enter the password “12345678”. Once successfully connected the “WiFi Connected” window will appear on the camera screen.

Using the App

Open the App by tapping on the B/CAM button on your phone and click the camera button to connect BCAMW80 camera.

After camera connected, the live video screen will appear.

NOTE: When connecting for the first time, the live video screen will appear in about 10-20 seconds. Time difference will be according to the configuration of your smartphone.

Recording / Capture / Playback / Download

Album - Downloaded video / photo will be saved in the Album.

Share - Click the video / photo in the Album and share the moments to social platform.

DVR Settings

TROUBLESHOOTING

PROBLEM	SOLUTION
The sticker will not stay in place upon my windscreen.	Ensure that the protective cover (plastic film) has been removed from the adhesive sticker.
I cannot insert the MicroSD card.	MicroSD card are very small and require delicate use. Align the card with the diagram shown upon the Dash Cam and insert the card until you feel a slight spring resistance. You now need to push the card, using your finger nail, until you hear and feel a small latch. Release pressure and the card will stay retained within the device. Use the edge of a small coin if you have difficulty.
I cannot remove the MicroSD card.	With the card previously installed, you now need to push the card further inwards slightly, using your finger nail, until you hear and feel a small latch. Use the edge of a small coin if you have difficulty. Release pressure and the card will spring out sufficiently for you to take hold of it.
I can only record a few minutes of video on my MicroSD card.	Change the recording size (Video Length function) to a smaller size. Increase the size of the MicroSD card. Max 128GB.
No power to my Dash Cam, but it works upon my PC.	The cigarette power cable is not working. Inspect the fuse in the Car Power plug. Replacement fuse = 2A 20mm type. If the fuse is found to be blown, inspect the power cable for damage which may have caused the fuse blow.
My Dash Cam shuts down by itself after a while.	There is no power to the Dash Cam and the Auto Power Off period has been triggered.
The screen blanks after a few minutes.	The screen saver is set to ON. Change settings to OFF if required.
The Dash Cam only last 10 seconds.	The Dash Cam will only work when the it is connected to power, please reconnect the car adaptor and leave the Dash Cam to charge. This is normal, the Dash Cam is set to 'Auto Power Off' feature once disconnected to the cigarette lighter.
The Dash Cam cannot lock onto satellite.	After power on and with the device mounted with clear view of the sky it can take up to 10 minutes to find the three satellites required to achieve a stable signal. Reception can also be affected by atmospheric conditions and the proximity of buildings / trees obscuring the sky.

TROUBLESHOOTING

PROBLEM	SOLUTION
I get the message "SD Card Error. Please format SD card" on screen.	The SD card has been formatted in another device and the Cluster Size is not compatible or the SD card is formatted in ExFAT/NTFS. There may also be an error on the card. Use the Setup option to re-format the SD card from within the Dash Cam.
I get the message "Card Full" on screen.	The SD card has become full as there may be too many protected files which will not be deleted to allow for further recording to take place. Delete unnecessary files or perform a full FORMAT upon the SD card from within the Dash Cam Setup Menu.
The SD card in my Dash Cam cannot be read.	Use a good quality branded SD card between 8GB and 128GB (Class 10) and format the card from within the Setup Menu.
I can't delete files on my SD card within the Dash Cam.	Check to see if these files are 'protected', if so please follow instructions to 'un-protect'.
Video files cannot be played.	The video files are in .MP4 format and may not be compatible with your PC if suitable playback software is not installed.
Video Image is blurred.	Remove the protective lens film, clean the lens and windshield!
My camera feels warm when it is operating.	It is normal for the camera to feel warm during typical use, especially while it is recording high definition video.
Video has no sound.	Ensure that "Record Audio" setting is turned ON within the Video Menu of the Dash Cam.
Video playback is really Quick on PC, not consistent with the recorded.	Turn off the Time Lapse Recording, form within the Video Menu.
Photograph is blurred.	Hold the camera still whilst taking the photo. Please be aware the photo is taken around 1 second after the shutter noise is heard.
When I press the MENU button nothing happens.	This is normal during recording. Stop the recording before pressing the MENU button.
The time on my Dash Cam is wrong and when I adjust the time manually, it keeps changing.	The Dash Cam sets the time based upon the country which has been selected and also whether Daylight Savings time is currently in force. Please verify the Country setting within the menu is correct. The Time Zone can be set manually, if the Dash Cam is to be used outside the listed countries in the Setup Menu.
Unresolved issues.	Reset the Dash Cam to the Default Settings within the Setup Menu and try again.



BOSS Audio Systems
3451 Lunar Court • Oxnard, CA 93030
www.bossaudio.com
800-999-1236 US Toll-free
805-751-4853 Customer Service
Tech Support: www.bossaudio.com/support

