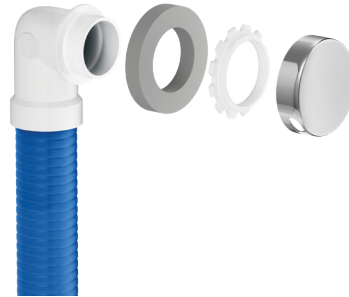


BATH WASTE KITS WITH QUICK TEST

All the features you need in one kit. Jones Stephens' Bath Waste Kits with Quick Test functionality offer a flexible solution for tub drain rough-in installations. The kit includes a test plug and test membrane, eliminating the need for extra parts, while the snap-on faceplate completes the job with ease. Available in a variety of options, materials, styles, and finishes, we offer what you need to make your new construction or remodel projects successful.



Certified Quality: Designed with quality engineering and certified to the highest standards. Our bath waste kits are cUPC listed and meet ASME and CSA standards.



Reliable: Install with confidence. Jones Stephens bath waste kits are built to last and backed by a five-year limited warranty.

Schedule 40 Rough-In Half Bath Waste Kit with Quick Test

- Includes test plug and test membrane
- Compatible with snap-on faceplate
- PVC test cap is red; ABS is blue



Part Code	Finish	Drain Body	Compatible Stopper*	CTN/MSTR
PVC				
BOHRPZLCP	Chrome Plated	Zinc	L&T, P/P, TT	1/24
BOHRPZLBN	Brushed Nickel	Zinc	L&T, P/P, TT	1/24
BOHRPBPCP	Chrome Plated	Brass	P/P, TT	1/24
ABS				
BOHRAZLCP	Chrome Plated	Zinc	L&T, P/P, TT	1/24
BOHRABPCP	Chrome Plated	Brass	P/P, TT	1/24

*L&T = Lift and Turn, P/P = Push/Pull, TT = Toe Touch

Schedule 40 Flexible Full Bath Waste Kit with Quick Test

- Flexible tubing eliminates the need to use 45° elbows for offsets
- Includes test plug and test membrane
- PVC test cap is red; ABS is blue



Part Code	Finish	Size	Drain Body	Stopper Style	CTN/MSTR
BOF16PZLCP	Chrome Plated	16"	Zinc	Lift and Turn	1/10
BOF16PBPCP	Chrome Plated	16"	Brass	Push/Pull	1/10
BOF16PZLBN	Brushed Nickel	16"	Zinc	Lift and Turn	1/10
BOF16PZTBN	Brushed Nickel	16"	Zinc	Toe Touch	1/10
BOF24PZLCP	Chrome Plated	24"	Zinc	Lift and Turn	1/10
BOF24PBPCP	Chrome Plated	24"	Brass	Push/Pull	1/10
BOF24PZTCP	Chrome Plated	24"	Zinc	Toe Touch	1/10
BOF24PBPN	Brushed Nickel	24"	Brass	Push/Pull	1/10

Test Cap



Part Code	Description	CTN/MSTR
BOTEST	Overflow Test Cap	1/100

See next page for continued offering.

Tubular Full Bath Waste Kit with Quick Test

- Slip joint connection
- Includes test plug



Part Code	Finish	Size	Drain Body	Stopper Style	CTN/MSTR
B0PZLCP	Chrome Plated	16"	Zinc	Lift and Turn	1/20
B0PZLBN	Brushed Nickel	16"	Zinc	Lift and Turn	1/20
B0PZLMB	Matte Black	16"	Zinc	Lift and Turn	1/20

Trim Kit with Snap-On Faceplate

- Includes a snap-on faceplate and drain
- Compatible with Jones Stephens' quick test style bath waste kits



Part Code	Finish	Drain Body	Stopper Style	CTN/MSTR
B0ZLBN	Brushed Nickel	Zinc	Lift and Turn	1/100
B0ZLMB	Matte Black	Zinc	Lift and Turn	1/100
B0ZLRB	Oil Rubbed Bronze	Zinc	Lift and Turn	1/100
B0BPMB	Matte Black	Zinc	Push/Pull	1/100
B0BPRB	Oil Rubbed Bronze	Zinc	Push/Pull	1/100

Snap-On Faceplate with Stopper

- Includes a snap-on faceplate and stopper
- Compatible with Jones Stephens' quick test style bath waste kits



Part Code	Finish	Stopper Style	CTN/MSTR
B0SLCP	Chrome Plated	Lift and Turn	1/100
B0SPCP	Chrome Plated	Push/Pull	1/100
B0STCP	Chrome Plated	Toe Touch	1/100
B0SLBN	Brushed Nickel	Lift and Turn	1/100
B0SLWH	White	Lift and Turn	1/100

Fast Trim

- Includes a trim ring and adhesive
- Compatible with Jones Stephens' quick test style bath waste kits
- Installs over existing drain
- Stopper is made of brass



Part Code	Finish	Stopper Style	CTN/MSTR
BFLCP	Chrome Plated	Lift and Turn	1/100
BFPCP	Chrome Plated	Push/Pull w/Grate	1/100
BFLBN	Brushed Nickel	Lift and Turn	1/100
BFLMB	Matte Black	Lift and Turn	1/100
BFLRB	Oil Rubbed Bronze	Lift and Turn	1/100
BFLWH	White	Lift and Turn	1/100

Schedule 40 Half Bath Waste Kit with Quick Test

- Includes test plug and test membrane



Part Code	Finish	Drain Body	Stopper Style	CTN/MSTR
PVC				
B0HPZLCP	Chrome Plated	Zinc	Lift and Turn	1/24
B0HPZLFCP*	Chrome Plated	Zinc	Lift and Turn	1/24
B0HPBPCP	Chrome Plated	Brass	Push/Pull	1/24
B0HPZTCP	Chrome Plated	Zinc	Toe Touch	1/24
B0HPZLBN	Brushed Nickel	Zinc	Lift and Turn	1/24
B0HPBPBN	Brushed Nickel	Brass	Push/Pull	1/24
B0HPZTBN	Brushed Nickel	Zinc	Toe Touch	1/24
B0HPZLMB	Matte Black	Zinc	Lift and Turn	1/24
B0HPBPMB	Matte Black	Brass	Push/Pull	1/24
B0HPZTMB	Matte Black	Zinc	Toe Touch	1/24
B0HPZLWH	White	Zinc	Lift and Turn	1/24
B0HPZLFWH*	White	Zinc	Lift and Turn	1/24
B0HPBPWH	White	Brass	Push/Pull	1/24
B0HPZLRB	Oil Rubbed Bronze	Zinc	Lift and Turn	1/24
B0HPBPRB	Oil Rubbed Bronze	Brass	Push/Pull	1/24
B0HPZTRB	Oil Rubbed Bronze	Zinc	Toe Touch	1/24

ABS

B0HAZLCP	Chrome Plated	Zinc	Lift and Turn	1/24
B0HABPCP	Chrome Plated	Brass	Push/Pull	1/24
B0HAZLBN	Brushed Nickel	Zinc	Lift and Turn	1/24
B0HABPBN	Brushed Nickel	Brass	Push/Pull	1/24
B0HAZTBN	Brushed Nickel	Zinc	Toe Touch	1/24
B0HABPMB	Matte Black	Brass	Push/Pull	1/24
B0HABPWH	White	Brass	Push/Pull	1/24
B0HABPRB	Oil Rubbed Bronze	Brass	Push/Pull	1/24

**fine thread*

Snap-On Faceplate with Conversion Bar

- Includes a snap-on faceplate, conversion bar and trim ring
- Compatible with Jones Stephens' quick test style bath waste kits



Part Code	Finish	CTN/MSTR
B0CP	Chrome Plated	1/200
B0BN	Brushed Nickel	1/200
B0MB	Matte Black	1/200
B0WH	White	1/200
B0RB	Oil Rubbed Bronze	1/200

Contact your local Jones Stephens sales representative to order today.