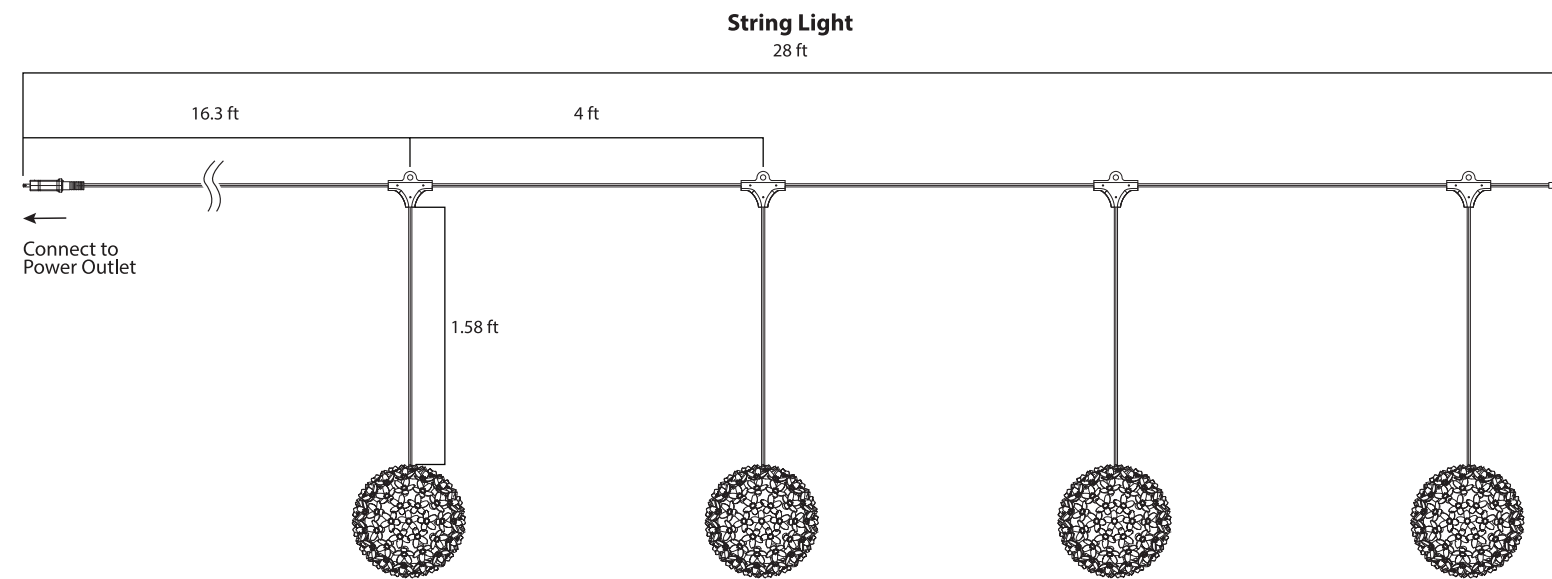
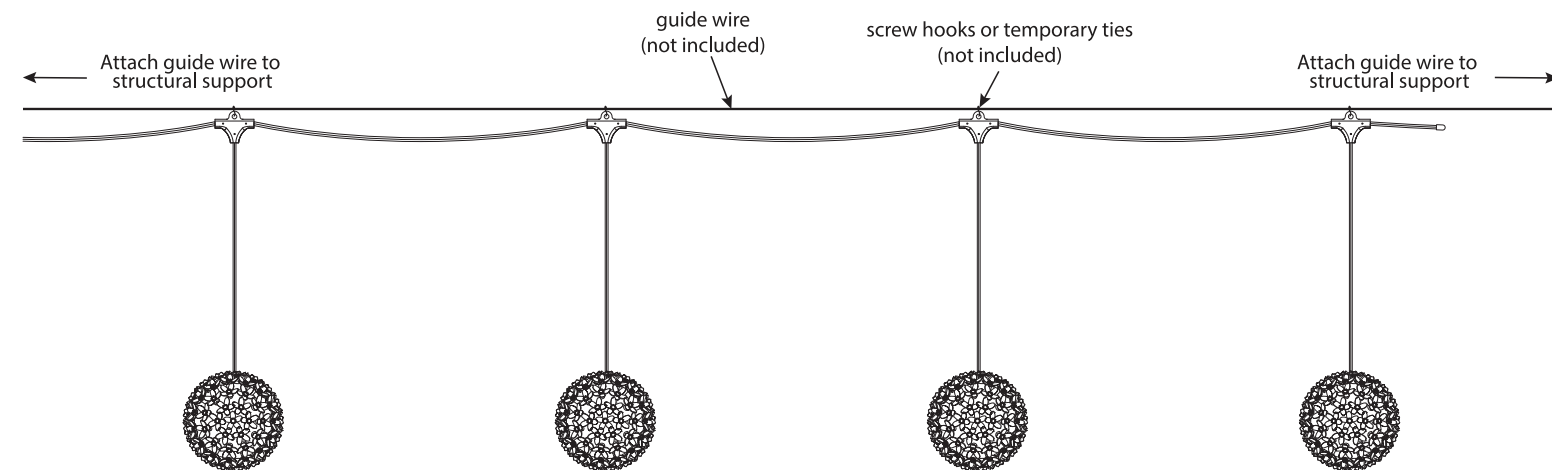


# INSTALLING STRING LIGHTS

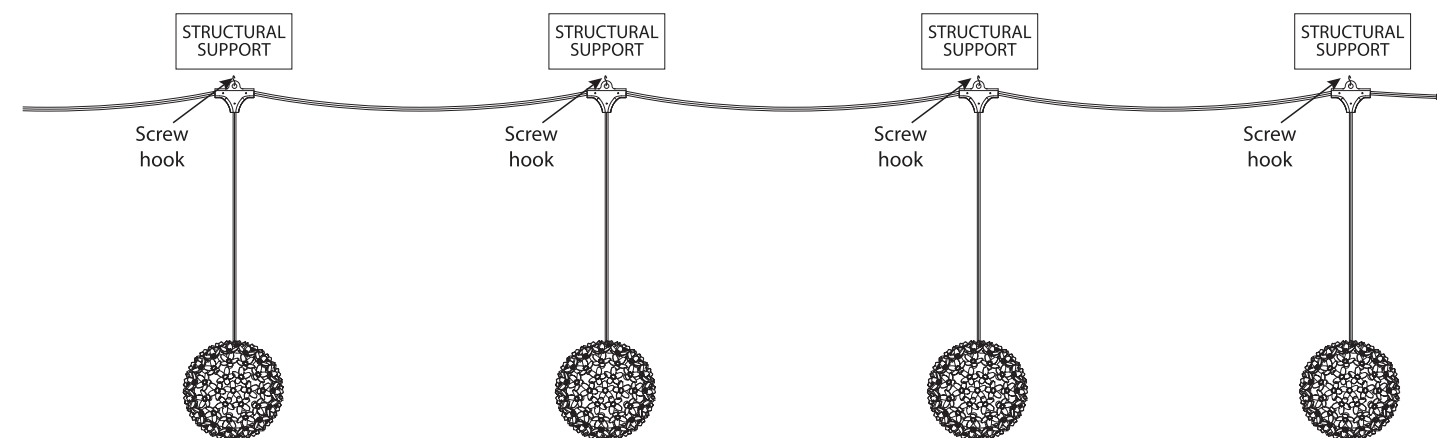


## INSTALLATION METHODS

### 1. Using a guide wire with screw hooks or temporary ties (not included)



### 2. Attached to a structure



SCREW HOOKS OR TEMPORARY TIES NOT INCLUDED. DRAWINGS NOT TO SCALE.

MODEL: SL16-4/BALL/AG



# SMART- COLOR CHANGING LED STRING LIGHTS

## IMPORTANT RETAIN FOR FUTURE USE: READ CAREFULLY

When using electrical products, basic precautions should always be followed including the following:

- a. **READ AND FOLLOW ALL SAFETY INSTRUCTIONS**
- b. Connect this product to a Ground Fault Circuit Interrupting (GFCI) outlet. If one is not provided, contact a qualified electrician for proper installation.
- c. Do not mount or place near gas or electric heaters, fireplace, candles, or other similar sources of heat.
- d. Do not secure the wiring of the product with staples or nails, or place on sharp hooks or nails.
- e. Install only using the mounting means provided.
- f. Do not let lamps rest on the supply cord or on any wire.
- g. Do not use this product for other than its intended use.
- h. Do not hang ornaments or other objects from the cord, wire, or lamps.
- i. Do not close doors or windows on the product or extension cords as this may damage the wire insulation.
- j. Do not cover the product with cloth, paper or any material not part of the product when in use.
- k. Keep lamps away from any combustible surface.
- l. Read and follow all instructions that are on the product or provided with the product.
- m. This product should be installed out of the reach of children.
- n. String Lights should be installed so that bulbs are facing down ONLY.
- o. Do not secure String Lights to buildings or other structural supports using nails, staples or other sharp, conducting materials. DO NOT DAMAGE THE WIRE.
- p. Do not submerge.

## SAVE THESE INSTRUCTIONS

### CAUTION:

1. To avoid risk of shock, always make sure the product is unplugged from the electrical outlet before assembling, disassembling, installing, relocating, servicing or cleaning it.
2. Do not use with extension cord near water or where water may accumulate. Keep at least 4.8 m / 16 ft from pools and spas. Keep plugs and receptacles dry. Do not submerge.

## Model Number: SL16-4/BALL/AG

### BATTERY WARNING:

Risk of fire, explosion, and burns. Do not disassemble, crush, heat above 100° C / 212° F or incinerate. Replace with 2 x AAA 1.5V Batteries.

DISPOSE OF USED BATTERY PROMPTLY. KEEP AWAY FROM CHILDREN. DO NOT DISASSEMBLE AND DO NOT DISPOSE OF IN FIRE.

When replacing battery, ensure the new battery is installed correctly with regard to polarity (+ and -) as shown on remote.

### CAUTION:

Dispose of used battery promptly according to local recycling or waste regulations. Clean battery contacts and also device contacts prior to installing battery. Ensure the battery is installed correctly with regard to polarity (+ and -). Remove battery from remote when not being used for an extended period of time. Remove used battery promptly.



Only supports 2.4GHz Wi-Fi networks



Works with Feit Electric app

# Getting Started:

**1** Download the Feit Electric app on your smart device

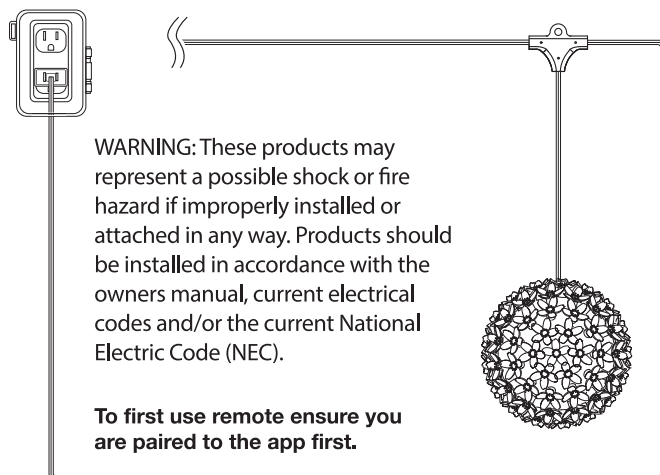


**2** Install your Smart String Lights

See "Installing String Lights" Section on page 4. Inter-connect additional sets, up to 23 sets.

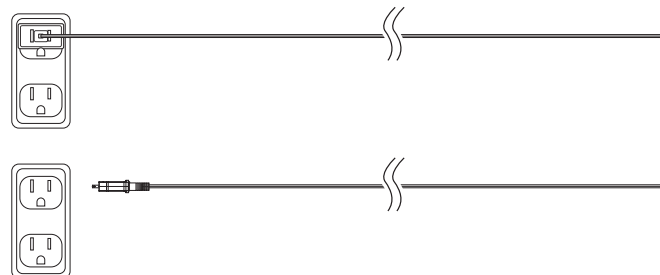
**3** Plug in your Starlight Spheres

Plug the Smart String Lights into an outdoor rated GFCI receptacle.



**4** Pair your device

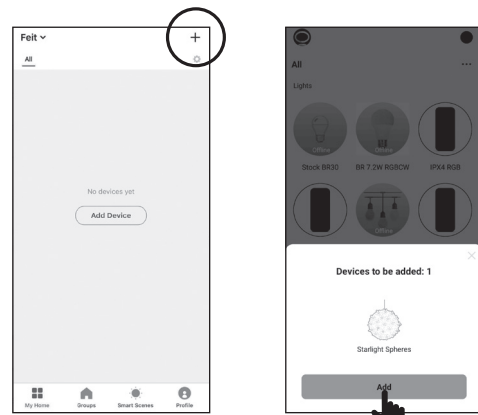
The product should automatically enter pairing mode when first powered on, indicated by a pulsing yellow light. If it is not in pairing mode, disconnect it from power and plug it back in five times to activate pairing mode.



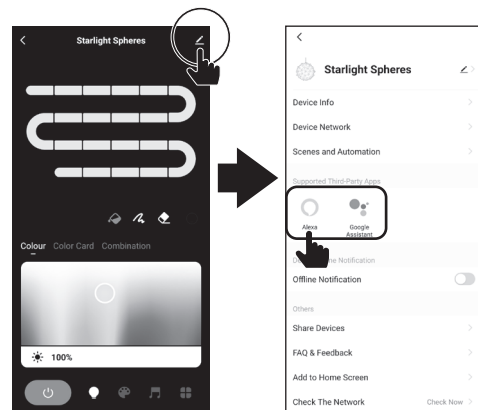
**5** Launch and use the Feit Electric app to complete the set up

Tap **Add Device** or the + sign, then select **Starlight Spheres** and confirm. You will be prompted to enter your Wi-Fi network and password.

Be sure to connect to a 2.4 GHz Wi-Fi network that covers your installation location.



(Optional) Connect to Google Assistant or Alexa using the in App guide



Tap ... icon

Choose Alexa or Google

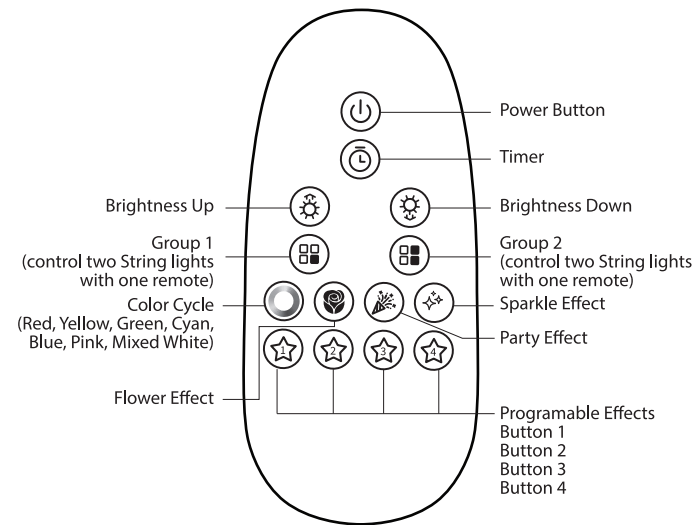
## Need Help?

Thank you for your purchase. Questions, comments or feedback? We'd love to hear from you. Visit [feit.com/help](http://feit.com/help) for support or connect with us:



@FeitElectric @FeitElectricnc feitelectrilighting

## Remote Control



### PROGRAMMABLE EFFECTS - SET UP WITH SMART APP

Press to select any of the 4 Default Effects. To program the buttons with specific effects, first pair the light to your Feit Electric App with the Pairing Steps. Once paired to your Feit Electric app, create and select a custom effect within the app. After you see your custom effect displaying on the string light, press and hold the Programmable Effect button on the remote until the spheres flash. This will override the current effect on the button and this remote button will now display your selected effect.

### PAIRING/ UNPAIRING REMOTE

(to control multiple sets)

#### Pairing

At power on, if the device is not in smart pairing mode, first power cycle the device by disconnecting it from power and plugging it back in. To pair the first string light, press and hold the Group 1 button until the string light flashes once. The string light is now successfully paired with the remote.

To pair a second string light to the same remote, first power cycle the second string light by disconnecting it from power and plugging it back in. Then, press and hold the Group 2 button until the second string light flashes once. The second string light is now successfully paired with the remote.

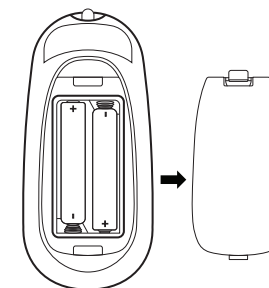
#### Un-Pairing

First, confirm which group (Group 1 or Group 2) the device is paired to. Then, press and hold the corresponding Group 1 or Group 2 button and the Brightness Down button on the remote simultaneously until the spheres blink twice, indicating they have been unpaired.

**NOTE:** To use remote pair the starlight spheres to the app first.

### REPLACING BATTERY

Always purchase the correct size and grade of battery most suitable for the intended use. Clean the battery contacts and also those of the device prior to battery installation. Ensure the battery is installed correctly with regard to polarity (+ and -). Remove battery from equipment which is not to be used for an extended period of time. Remove used battery promptly.



For additional remote controls please contact Feit Electric at [www.feit.com](http://www.feit.com)

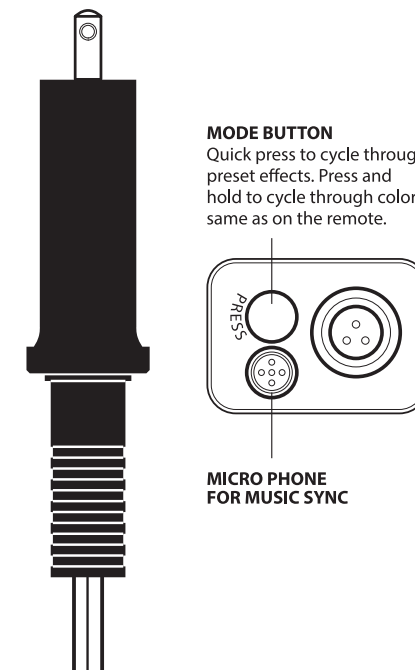
### TROUBLESHOOTING TIPS - WI-FI

If you are having difficulty connecting:

- Make sure the Wi-Fi network is a 2.4 GHz network. Smart String Lights will not connect to a 5 GHz network.
- Test your Wi-Fi network with other devices such as your phone to make sure it is operating properly.
- The Wi-Fi connection may not have good coverage during set up. Try moving the Smart String Lights closer to your Wi-Fi router.
- Your Wi-Fi network password is case sensitive, make sure you are entering correctly.

Devices plugged into your Smart Wi-Fi Plug must be ON in order to be controlled via the mobile app. Please also check the App User Guide for more information

## Power Supply Control Box



**MODE BUTTON**  
Quick press to cycle through preset effects. Press and hold to cycle through colors same as on the remote.

**MICRO PHONE FOR MUSIC SYNC**

### LIMITED WARRANTY

This product is warranted to be free from defects in workmanship and materials for up to 1 year from date of purchase. If the product fails within the warranty period, please visit [feit.com/help](http://feit.com/help) for help. REPLACEMENT OR REFUND IS YOUR SOLE REMEDY. EXCEPT TO THE EXTENT PROHIBITED BY APPLICABLE LAW, ANY IMPLIED WARRANTIES ARE LIMITED IN DURATION TO THE DURATION OF THIS WARRANTY. LIABILITY FOR INCIDENTAL OR CONSEQUENTIAL DAMAGES IS HEREBY EXPRESSLY EXCLUDED. Some states and provinces do not allow the exclusion of incidental or consequential damages, so the above limitation or exclusion may not apply to you. This warranty gives you specific legal rights, and you may also have other rights which vary from state to state or province to province.

This device complies with part 15 of the FCC Rules. Operation is subject to the following two conditions: (1) This device may not cause harmful interference, and (2) this device must accept any interference received, including interference that may cause undesired operation. This equipment has been tested and found to comply with the limits for a Class B digital device, pursuant to part 15 of the FCC Rules. These limits are designed to provide reasonable protection against harmful interference in a residential installation. This equipment generates, uses and can radiate radio frequency energy and, if not installed and used in accordance with the instructions, may cause harmful interference to radio communications. However, there is no guarantee that interference will not occur in a particular installation. If this equipment does cause harmful interference to radio or television reception, which can be determined by turning the equipment off and on, the user is encouraged to try to correct the interference by one or more of the following measures: Reorient or relocate the receiving antenna. Increase the separation between the equipment and receiver. Connect the equipment into an outlet on a circuit different from that to which the receiver is connected. Consult the dealer or an experienced radio/TV technician for help. Any changes or modifications not expressly approved by the manufacturer could void the user's authority to operate the equipment.

### Supplier's Declaration of Conformity:

47 CFR § 2.1077 Compliance Information  
**Responsible Party:**  
Feit Electric Company  
4901 Gregg Road,  
Pico Rivera, CA 90660, USA  
[www.feit.com](http://www.feit.com)  
Unique Identifier: SL16-4/BALL/AG

The performance specifications (life hours) printed on this manual should only be considered an approximation of expected performance.