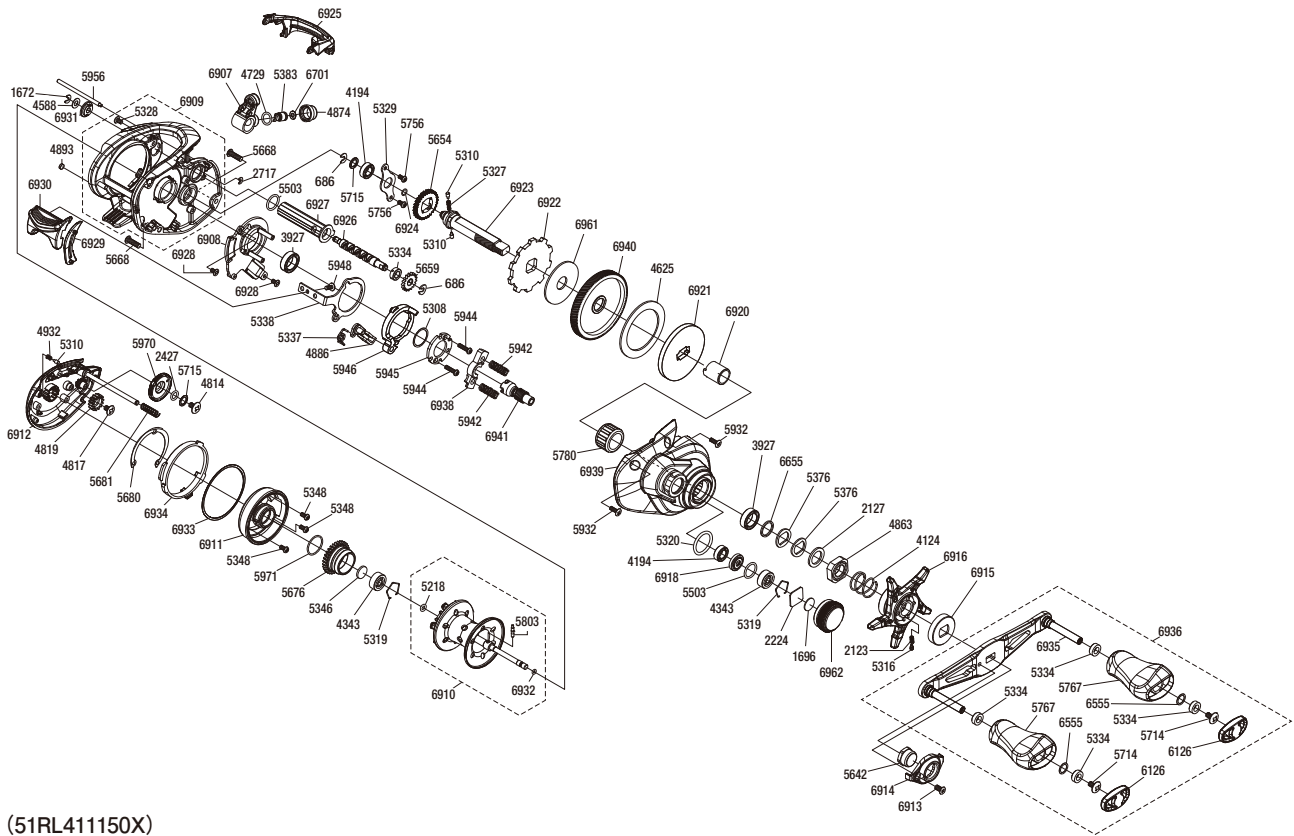


# SHIMANO

## CURADO MGL

## CUMGL150



(51RL411150X)

#	Part No.	Description	#	Part No.	Description	#	Part No.	Description
686	105NK	E Lock	5338	10QZV	Clutch Plate	6909	10T3A	Frame Assembly
1672	105NC	E Lock	5346	10EX5	Bearing Spacer	6910	10T3G	Spool Assembly
1696	10896	Cast Control Spacer (B)	5348	10L1Q	Screw	6911	10S8R	Brake Case
2123	10BT2	Click Spring	5376	109F5	Washer	6912	10S8L	Left Side Plate Assembly
2127	10J1N	Star Drag Spacer	5383	10BHQ	Line Guide Pawl	6913	10DV5	Screw
2224	1085F	Cast Control Spacer (A)	5503	101GT	O Ring	6914	101E6	Handle Nut Plate
2427	108WS	O Ring	5642	10SSU	Handle Nut	6915	101Q1	Star Drag Click Plate
2717	105NB	E Lock	5654	101K8	Idle Gear A	6916	101ED	Star Drag
3927	10EX8	Ball Bearing	5659	10SRL	Idle Gear C	6918	100BL	Bearing Spacer
4124	10A70	Star Drag Spring	5668	10SXB	Screw	6920	100BM	Roller Clutch Inner Tube
4194	105BP	Ball Bearing	5676	101DR	Brake Ring Gear	6921	100BK	Key Washer
4343	105C3	Ball Bearing	5680	10SSN	Washer	6922	100BJ	Anti-Reverse Ratchet
4588	10FJZ	Washer	5681	10KNH	Spring	6923	10T3H	Drive Shaft
4625	106XT	Drag Washer C	5714	10LFA	Screw	6924	108WU	O Ring
4729	108WQ	O Ring	5715	10G6D	Washer	6925	101E7	Level Wind Protector
4814	103LE	Screw	5756	10S3Y	Screw	6926	10S8K	Worm Shaft
4817	103L7	Screw	5767	10SSM	Handle Knob	6927	10T3X	Level Wind Guard
4819	10CLF	Idle Gear	5780	1005E	Roller Clutch Bearing	6928	100S4	Screw
4863	10A3T	Star Drag Nut	5803	10MD0	Spool Clutch Pin	6929	10T3V	Clutch Bar Guide (B)
4874	10FJB	Pawl Cap	5932	10LCY	Screw	6930	101EC	Clutch Button
4886	10MME	Clutch Pawl Assembly	5942	100U9	Yoke Spring	6931	100G7	Level Wind Guard Bushing
4893	108PY	Washer	5944	10LV0	Screw	6932	100BH	O Ring
4932	10GQZ	Click Spring	5945	100US	Clutch Cam Retainer	6933	101UN	Washer
5218	10EZ7	O Ring	5946	100UK	Clutch Cam	6934	101Q2	Left Side Plate Cam Lever
5308	10190	Washer	5948	10LF4	Screw	6935	10T36	Handle Shank Assembly
5310	10HJG	Idle Gear Pin	5956	100UT	Stabilizer Bar	6936	10T33	Handle Assembly
5316	10MFC	Click Pin	5970	10SAZ	Brake Dial	6938	10S8M	Yoke
5319	1054D	Bearing Retainer	5971	100GW	O Ring	6939	101PZ	Right Side Plate
5320	10R22	O Ring	6126	100NC	Handle Knob Seal	6940	101Q3	Drive Gear
5327	10JDY	Idle Gear Spring	6555	104FH	Washer	6941	101Q4	Pinion Gear
5328	10LCQ	Screw	6655	100SE	Washer	6961	10CJH	Drag Washer B
5329	109T1	Drive Shaft Retainer	6701	10CFU	Washer	6962	10S8T	Cast Control Cap
5334	10PXZ	Bushing	6907	10R51	Line Guide Assembly			
5337	10R1H	Clutch Pawl Spring	6908	10R56	Clutch Guard Assembly			

Please note that the number of adjusting washers may not be the same as shown in the exploded views.  
(Adjustment will vary with each individual product.)

(230611)\_003