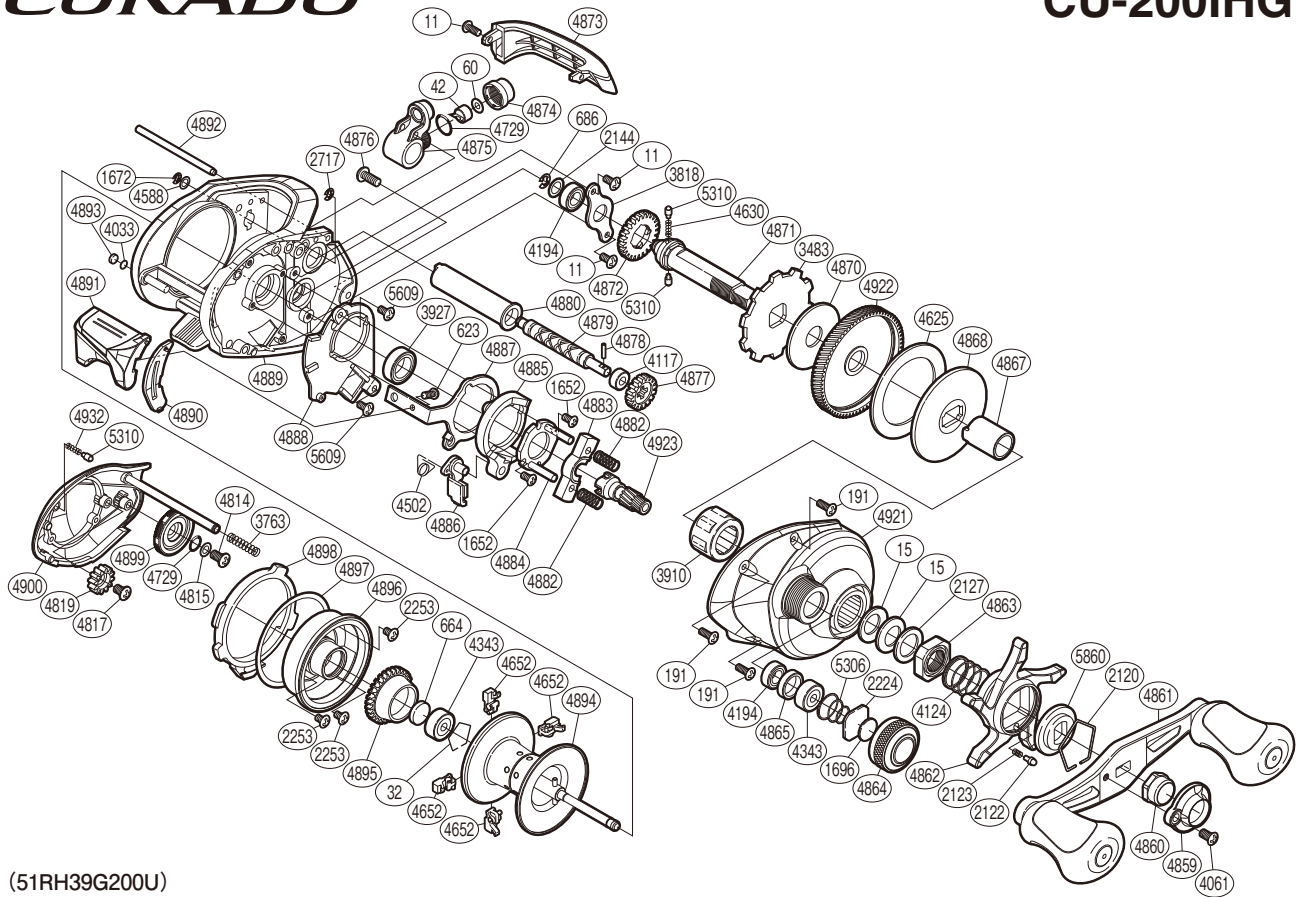


SHIMANO

CURADO

CU-200IHG



(51RH39G200U)

#	Part No.	Description	#	Part No.	Description	#	Part No.	Description
11	10MT0	Screw	4343	105C3	Ball Bearing	4880	10NFQ	Level Wind Guard
15	10D60	Drag Spring Washer	4502	104CN	Clutch Pawl Spring	4882	10487	Yoke Spring
32	10GEW	Bearing Retainer	4588	10FJZ	Washer	4883	1046V	Yoke
42	10FFZ	Line Guide Pawl	4625	106XT	Drag Washer	4884	10F3X	Clutch Cam Retainer
60	10CFW	Spacer	4630	10JDX	Idle Gear Spring	4885	10K0N	Clutch Cam
191	10MPT	Screw	4652	1046G	Brake Shoe	4886	10MME	Clutch Pawl
623	103C0	Screw	4729	108WQ	O Ring	4887	10QGH	Clutch Plate
664	1057S	Spacer B	4814	103LE	Screw	4888	10BVL	Clutch Guard
686	105NK	E Lock	4815	10GFB	Washer	4889	10EVC	One-Piece Frame
1652	10LVE	Screw	4817	103L7	Screw	4890	1096S	Clutch Bar Guide
1672	105NC	E Lock	4819	10CLF	Idle Gear	4891	10CDL	Quick-Fire II Clutch Bar
1696	10896	Cast Control Spacer	4859	10Q5P	Handle Nut Plate	4892	10QSE	Stabilizer Bar
2120	10KXV	Click Plate Retainer	4860	10FFB	Handle Nut	4893	108PY	Anti-Thrust Washer
2122	10BT0	Click Pin	4861	10CEX	Handle Assembly	4894	10L12	Spool Assembly
2123	10BT2	Click Spring	4862	10D6T	Star Drag	4895	10EXQ	Brake Ring Gear
2127	10J1N	Star Drag Spacer	4863	10A3T	Star Drag Nut	4896	10F0N	Brake Case
2144	10C47	Washer	4864	10KDL	Cast Control Cap	4897	104MX	Washer
2224	1085F	Spool Tension Spacer	4865	10EYS	Bearing Spacer	4898	10BAK	Side Plate Cam Lever
2253	103N4	Screw	4867	10CCN	Roller Clutch Inner Tube	4899	10AZB	Br Dial
2717	105NB	E Lock	4868	10D3H	Key Washer	4900	10D09	Left Side Plate
3483	109BB	Anti-Reverse Ratchet	4870	10CHF	Drag Washer	4921	10GK1	Right Side Plate
3763	10KNG	Side Plate Spring	4871	1058L	Drive Shaft	4922	10CMC	Drive Gear
3818	109T0	Drive Shaft Retainer	4872	10J47	Idle Gear	4923	10CRW	Pinion Gear
3910	10F5D	Roller Clutch Bearing	4873	10FWC	Level Wind Protector	4932	10GQZ	Click Spring
3927	10EX8	Ball Bearing	4874	10FJB	Pawl Cap	5306	10TMT	Spool Tension Spring
4033	108SK	Washer	4875	10NVQ	Line Guide	5310	10HJG	Idle Gear Pin
4061	103ED	Screw	4876	103DC	Screw	5609	10LCT	Screw
4117	10PXY	Bushing	4877	10FNV	Idle Gear	5860	10J26	Star Drag Click Plate
4124	10A70	Star Drag Spring	4878	10AEZ	Worm Shaft Pin			
4194	105BP	Ball Bearing	4879	104SN	Worm Shaft	4692	10LQ0	B-100 Oil (accessory)

Please note that the number of adjusting washers may not be the same as shown in the exploded views.
(Adjustment will vary with each individual product.)

(241029)_005