

INSTRUCTION MANUAL

CHM-1200W, CHM-2400W, CHM-4350W

ELECTRIC CHEESEMELTERS

This manual contains important information regarding your Adcraft unit. Please read this manual thoroughly prior to equipment set-up, operation and maintenance. Failure to comply with regular maintenance guidelines outlined in this manual may void the warranty.

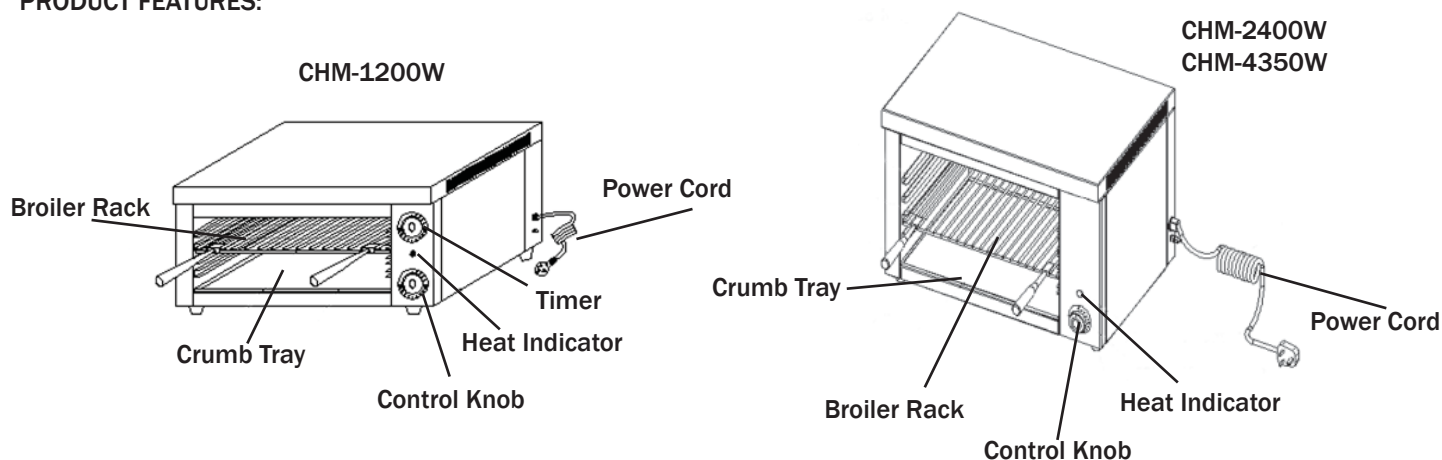
WARNINGS

- Do not touch any hot surfaces
- Plug only into a 3-hole grounded electrical outlet of the appropriate voltage
- Do not immerse unit, cord or plug in liquid at any time
- Unplug cord from outlet when not in use and before cleaning
- Do not operate unattended
- Do not use this unit for anything other than intended use
- Do not use outdoors
- Always use on a firm, dry and level surface
- Do not use if unit has a damaged cord or plug, in the event the appliance malfunctions, or has been damaged in any manner
- Keep children and animals away from unit
- Any incorrect installation, alterations, adjustments and/or improper maintenance can lead to property loss and injury. All repairs should be done by authorized professionals only.

TO INSTALL:

1. Remove unit from box and make sure all plastic, tape and packing materials are removed.
2. Place the unit on a flat, secure surface with at least 12" of open space around all sides.
3. Unit should be placed under a ventilation hood and there should be at least 2" of space between the back of the oven and the wall. This will ensure proper airflow

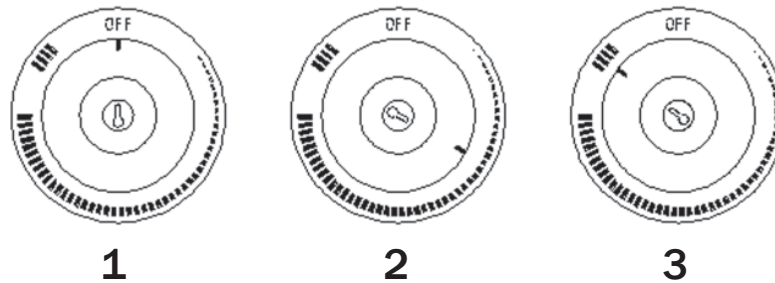
PRODUCT FEATURES:



TO USE:

1. Once unit is in place, slide the crumb tray and broiler rack into position and plug in.
2. Slide out broiler rack and place food on rack and slide back in at the desired position.
3. Turn the control dial to the heat setting you desire. As pictured in figure 1.1, the control dial has different settings. When the dial is set to OFF (1) the elements will not be working. You can rotate the dial clockwise to turn the elements on and start the heating cycle (2). Once the heating cycle has begun, the heat indicator light will go on and you can set the dial to the desired intensity. Once the melting chamber gets to desired temperature the elements and heat indicator light will turn off. When the temperature goes down, the unit will start heating up again and the heat indicator light will go back on.
4. To set the unit for infinite control, set the dial to how it's positioned in picture 3 (3). This will keep the unit running constantly and will stay at the heat desired without cycling on and off.
5. A timer comes standard on the CHM-1200W model. This timer controls the operation of the unit. Once the timer goes off, the unit will stop heating.

Figure 1



CLEANING - NOTE: To maintain cleanliness and increase service life, this item should be cleaned daily. Do not immerse the unit in water or any other liquid. Before cleaning or attempting to move this item always turn off and let cool.

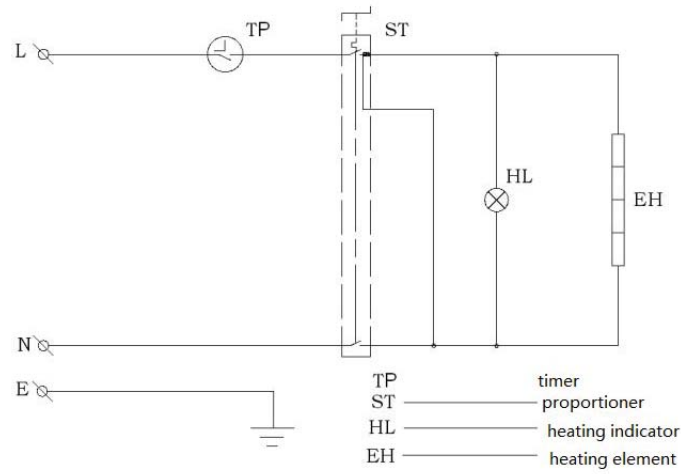
1. Remove the broiler rack and crumb tray and wash separately.
2. Wipe the entire unit with a clean soft cloth until it is completely dry.
3. To avoid damage to the unit, do not use abrasive cleaners or scouring pads.
4. If soap or chemical cleaners are used, be sure they are completely rinsed away with clean water immediately after cleaning. Chemical residue could damage or corrode the surfaces of the unit.

TROUBLESHOOTING

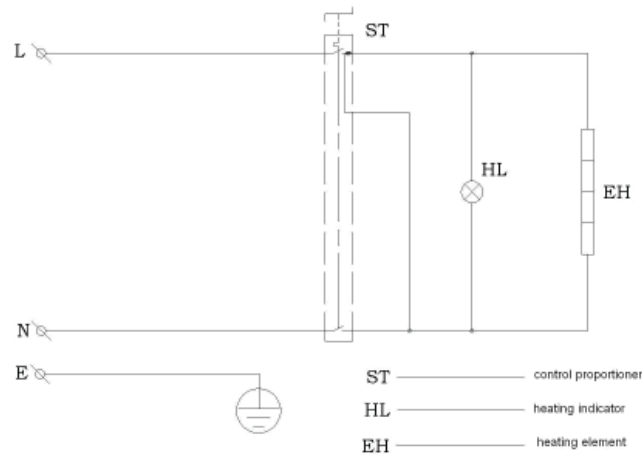
Problem	Possible Causes	Solution
No power in the unit when switching on	Power cord is unplugged	Plug in the power cord
Indicator is on but the chamber temperature is too high	Thermostat is defective	Replace the thermostat
Indicator light is off while the element heats up normally	The electrical connection is bad	Tighten the connection wire
Pilot Flame isn't lighting	Indicator light is defective	Replace the indicator light

Wiring Diagrams for the Electric Cheesemelters

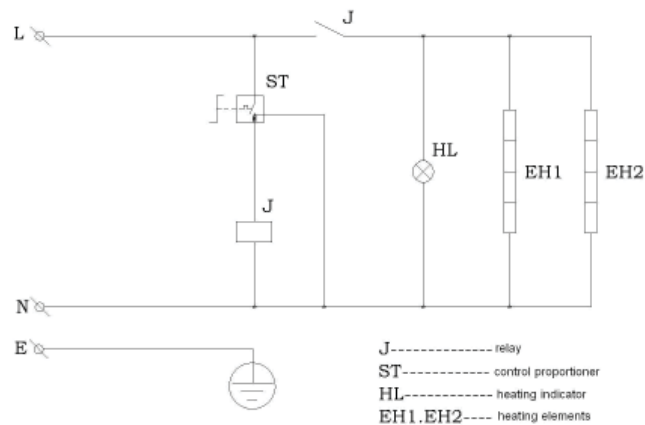
CHM-1200W



CHM-2400W

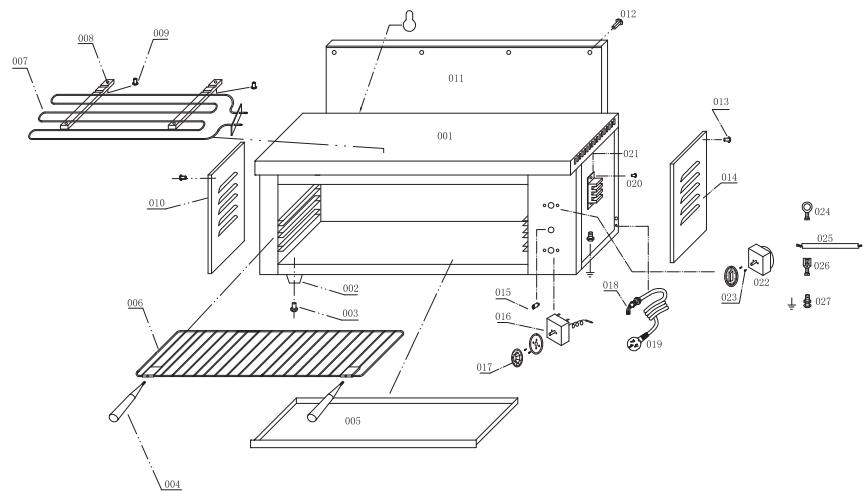


CHM-4350W

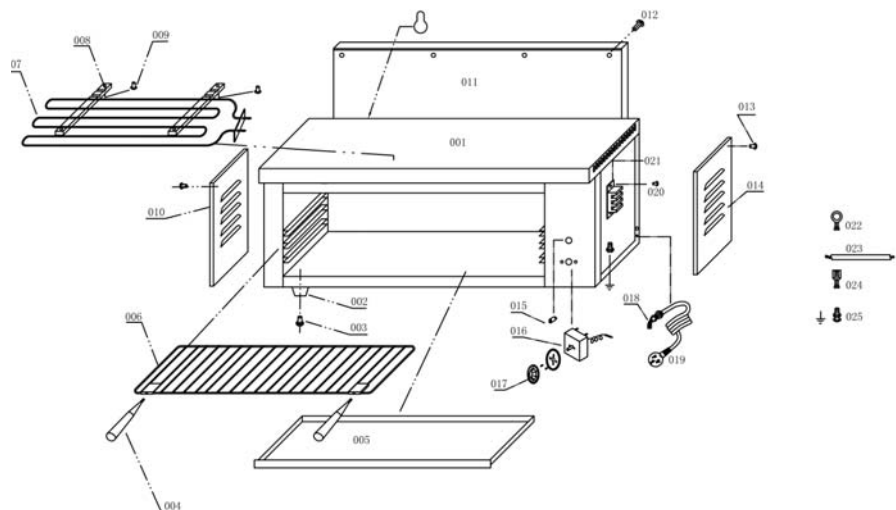


Parts Diagram for the Electric Cheesemelters

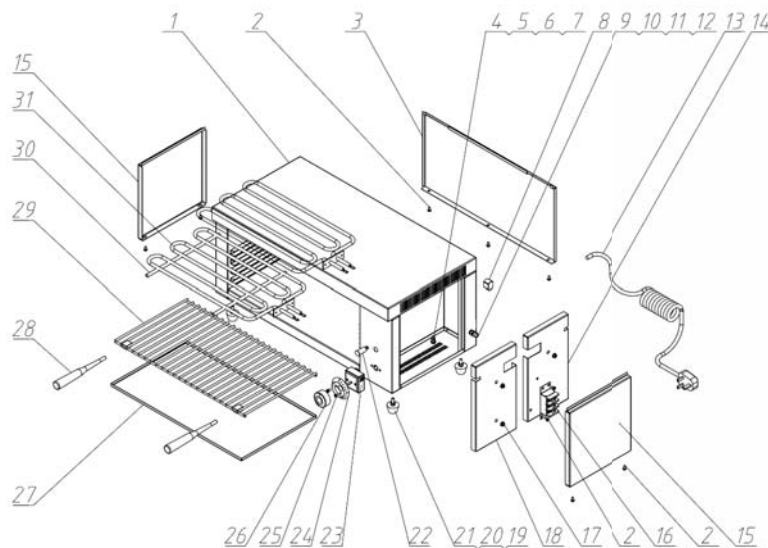
CHM-1200W



CHM-2400W



CHM-4350W



Replacement Parts for the CHM-1200W

Drawing Number	Description	Quantity
1	Body	1
2	Rubber Foot	4
3	Foot Screw	4
4	Handle	2
5	Crumb Tray	1
6	Broiler Rack	1
7	Element	1
8	Element Supporter	4
9	Screw	4
10	Right Side Plate	1
11	Back Side Plate	1
12	Screw of Back Plate	2
13	Screw of Right Plate	2
14	Left Side Plate	1
15	Heating Indicator	1
16	Thermostat	1
17	Thermostat Knob	1
18	Cord Sheath	1
19	Power Cord	1
20	Screw	2
21	Terminal	1
22	Timer Knob	1
23	Timer	1
24	Terminal	3
25	Internal Connecting Wire	1
26	Terminal	15
27	Grounding Screw	1

Replacement Parts for the CHM-2400W

Drawing Number	Description	Quantity
1	Body	1
2	Rubber Foot	4
3	Foot Screw	4
4	Handle	2
5	Crumb Tray	1
6	Broiler Rack	1
7	Element	1
8	Element Supporter	4
9	Screw	4
10	Right Side Plate	1
11	Back Side Plate	1
12	Screw of Back Plate	2
13	Screw of Right Plate	2
14	Left Side Plate	1
15	Heating Indicator	1
16	Thermostat	1
17	Thermostat Knob	1
18	Cord Sheath	1
19	Power Cord	1
20	Screw	2
21	Terminal	1
22	Terminal	3
23	Internal Connecting Wire	1
24	Terminal	15
25	Grounding Screw	1

Replacement Parts for the CHM-4350W

Drawing Number	Description	Quantity
1	Body	1
2	Screw	9
3	Outer Rear Plate	1
4	Screw	1
5	Nut	2
6	Flat Washer	4
7	Spring Washer	2
8	Relay	1
9	Screw	1
10	Nut	2
11	Flat Washer	3
12	Spring Washer	2
13	Power Cord with Plug	1
14	Thermal Protect Plate - Right	1
15	Outer Side Plate	2
16	Porcelain Terminal	1
17	Nut	4
18	Thermal Protect Plate - Left	1
19	Rubber Foot	4
20	Screw	4
21	Nut	4
22	Indicator Light	1
23	Energy Regulator	1
24	Bottom Plate - Energy Regulator	1
25	Screw	2
26	Knob for Energy Regulator	1
27	Crumb Tray	2
28	Handle	2
29	Broiler Rack	1
30	Element Supporter	2
31	Element	2

ACE Equipment One Year Limited Warranty

Admiral Craft Equipment Corp. (ACE) warrants its equipment against defects in materials and workmanship, subject to the following conditions:

ACE Equipment is warranted for one year, effective from the date of purchase by the original owner. A copy of the original receipt or other proof of purchase is required to obtain warranty coverage. This warranty applies to the original owner only, and is not assignable.

Should any product fail to function in its intended manner under normal use within the limits defined in this warranty, at ACE's discretion, such product will be repaired, replaced with a refurbished unit, or replaced with a new unit by ACE, after defective unit has been inspected and defect has been confirmed. ACE does not assume any liability for extended delays in replacing any item beyond its control. This warranty does not apply to rubber and non-metallic synthetic parts that may need to be replaced due to normal usage, wear or lack of preventative maintenance.

This warranty covers products shipped into the 48 contiguous United States, Hawaii, and metropolitan areas of Alaska and Canada. Warranty coverage on products used outside the 48 contiguous United States, Hawaii and metropolitan areas of Alaska and Canada may vary. Contact ACE for details at 1-800-223-7750

The following conditions are not covered by warranty:

- Equipment failure relating to improper installation, improper utility connection or supply and problems due to improper ventilation.
- Equipment that has not properly been maintained, damage from improper cleaning, and water damage to controls.
- Equipment that has not been used in an appropriate manner, or has been subject to misuse, neglect, abuse, accident, alteration, negligence, damage during transit, delivery or installation, fire, flood, riot, or act of God.
- Equipment that has the model number or serial number removed or altered.
- Equipment on which the security seal has been broken.

If the equipment has been changed, altered, modified, or repaired without express written permission from ACE, then the manufacturer shall not be liable for any damages to any person or to any property, which may result from the use of this equipment thereafter.

This equipment is intended for commercial use only and this warranty is void if equipment is used in other than a commercial application.

For warranty and non-warranty related issues, technical support, purchase replacement parts and warranty registration visit www.admiralcraft.com. Please have your model number, serial number and proof of purchase ready. It is not necessary to contact the place where you originally purchased your product from.

“THE FOREGOING WARRANTY IS IN LIEU OF ANY AND ALL WARRANTIES EXPRESSED OR IMPLIED INCLUDING ANY IMPLIED WARRANTY OF MERCHANTABILITY OR FITNESS FOR PARTICULAR PURPOSES AND CONSTITUTES THE ENTIRE LIABILITY OF ACE. IN NO EVENT DOES THE LIMITED WARRANTY EXTEND BEYOND THE TERMS STATED HEREIN.”

VER1212