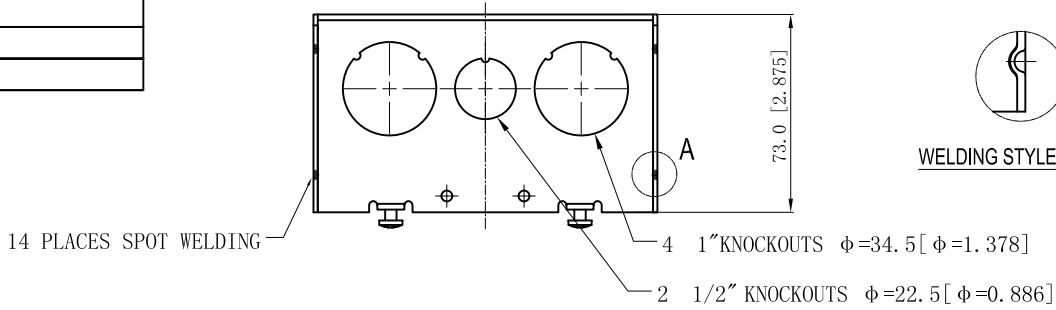
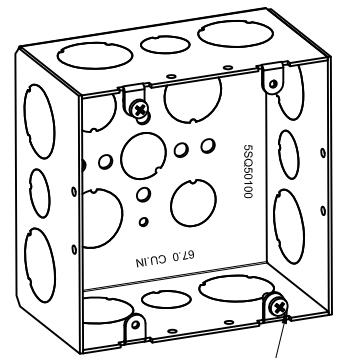


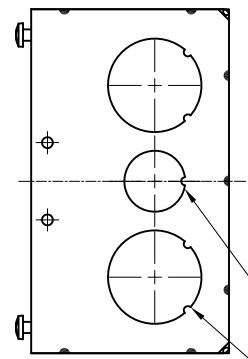
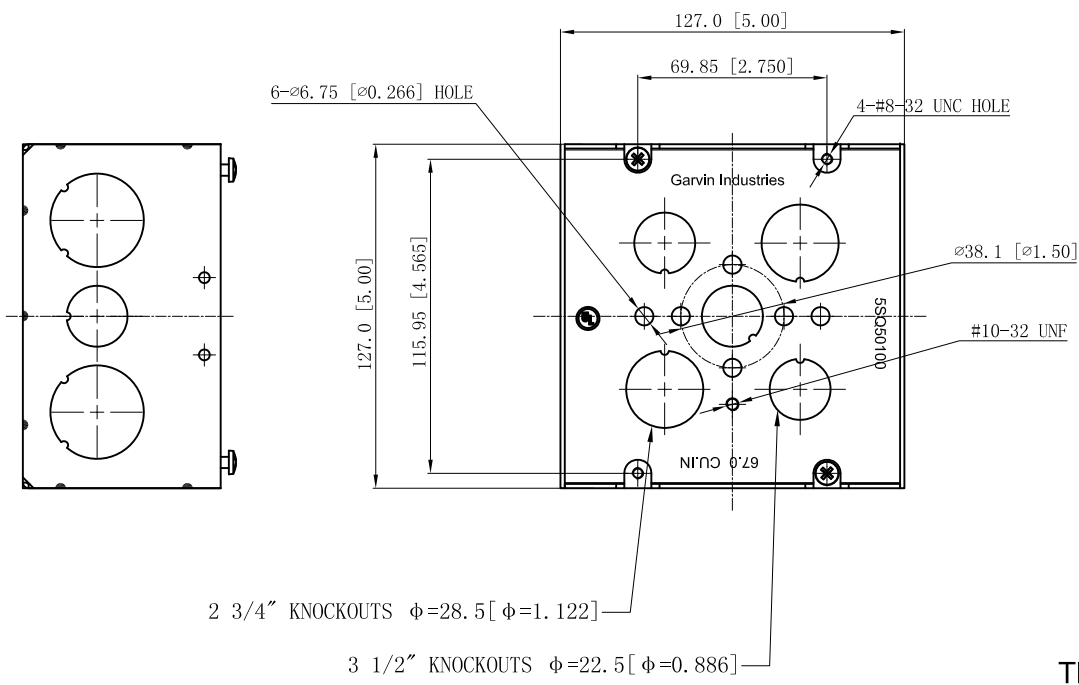
SIDES	BOTTOM
8 1" KNOCKOUTS	3 1/2" KNOCKOUTS
4 1/2" KNOCKOUTS	2 3/4" KNOCKOUTS
2 PCS 8-32X1/2 Screws Installed	
Material: Steel-0.0625"-G60 Galvanized	



WELDING STYLE DETAIL VIEW A



#8-32, X2



2 1/2" KNOCKOUTS $\phi=22.5$ [$\phi=0.886$]

4 1" KNOCKOUTS $\phi=34.5$ [$\phi=1.378$]

This data sheet is for reference only. GARVIN INDUSTRIES reserves the right to make changes to the design without prior notice.

DESCRIPTION
TRADE REFERENCE TERMS

STANDARD PACKING	GARVIN INDUSTRIES		
	5 in. Square X 2.875" Deep Metal Box		
SIZE	DWG NO.		REV
A4	5SQ50100		A
DATA SHEET			
www.garvinindustries.com			