



ITEM: TL-AZ070
TL-AZ071
TWO PIECE TOILET
INSTALLATION & OPERATION MANUAL
V1.0
11/22/2024



TL-AZ070



TL-AZ071

DON'T WAIT! REGISTER NOW!

Register your product within 90 days to ensure it is recognized as a purchase and covered under warranty.

Register online at <https://anzzi.com/pages/register>
or scan the QR code on PG. 2.



PRODUCT REGISTRATION*

IMPORTANT: Warranty will not be recognized unless product is registered.

Register online at <https://anzzi.com/pages/register> or Scan the QR code below.

Registering your product maximizes your warranty benefits and ensures prompt service and support.

1

USE YOUR PHONE CAMERA
TO SCAN THE QR CODE



2

FILL IN A QUICK
REGISTRATION FORM

Thank you for your purchase!

Registering your products ensures you maximize your warranty benefits and receive prompt service and support.

Name*

Email*

City*

Order #*

Installer Name

Model Purchased*

Installer Phone Number

Customer Age Range

3

CLICK SUBMIT AND
ENJOY PEACE OF MIND

Need help? For technical support call 305-614-4070 or visit us at www.ANZZI.com

INSTALLATION GUIDE BEFORE YOU BEGIN

- Please check the product for damage and missing parts immediately upon delivery. Damage reported later will not be covered by our warranty. Please handle the product with care. Avoid any impact to the sides and edges of the toilet.
- Consult your local plumbing & building codes prior to installation.

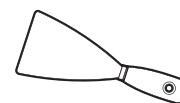
WARNING

- Handle with care. Vitreous chinaware is glasslike with sharp edges if broken. Do not drop, handle roughly, or overtighten bolts.

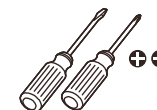
TOOLS AND MATERIALS



Wrench



Putty Knife



Screwdriver

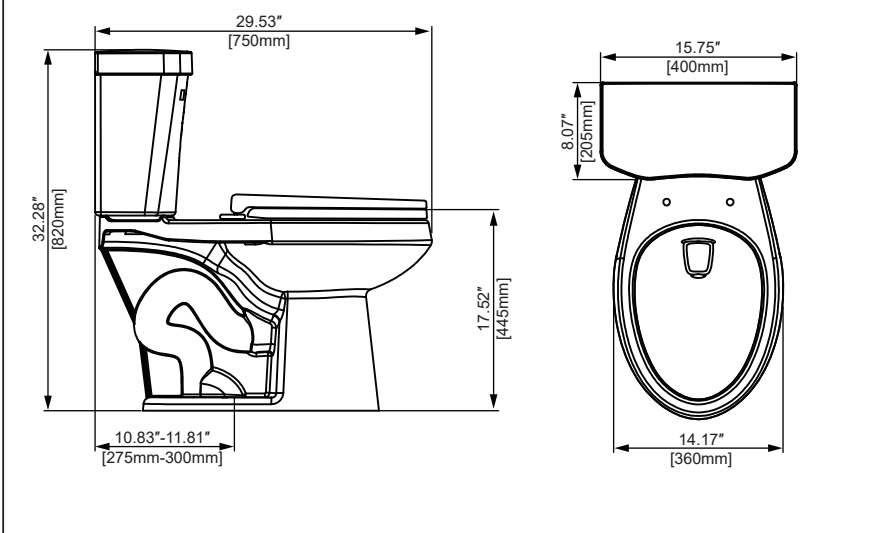


Adjustable Plier

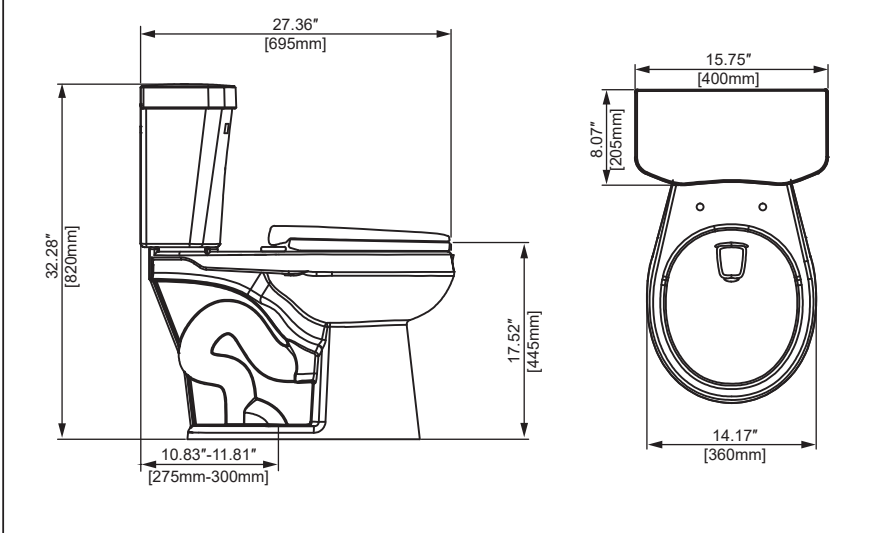
Thank you for purchasing ANZZI TOILET. Please read and follow the installation and operation instructions carefully, to ensure the long life and reliable operation of this appliance. FAILURE TO DO SO COULD CAUSE PROPERTY DAMAGE OR SERIOUS INJURY. Please keep this manual for future reference.

PRODUCT SIZE CHART

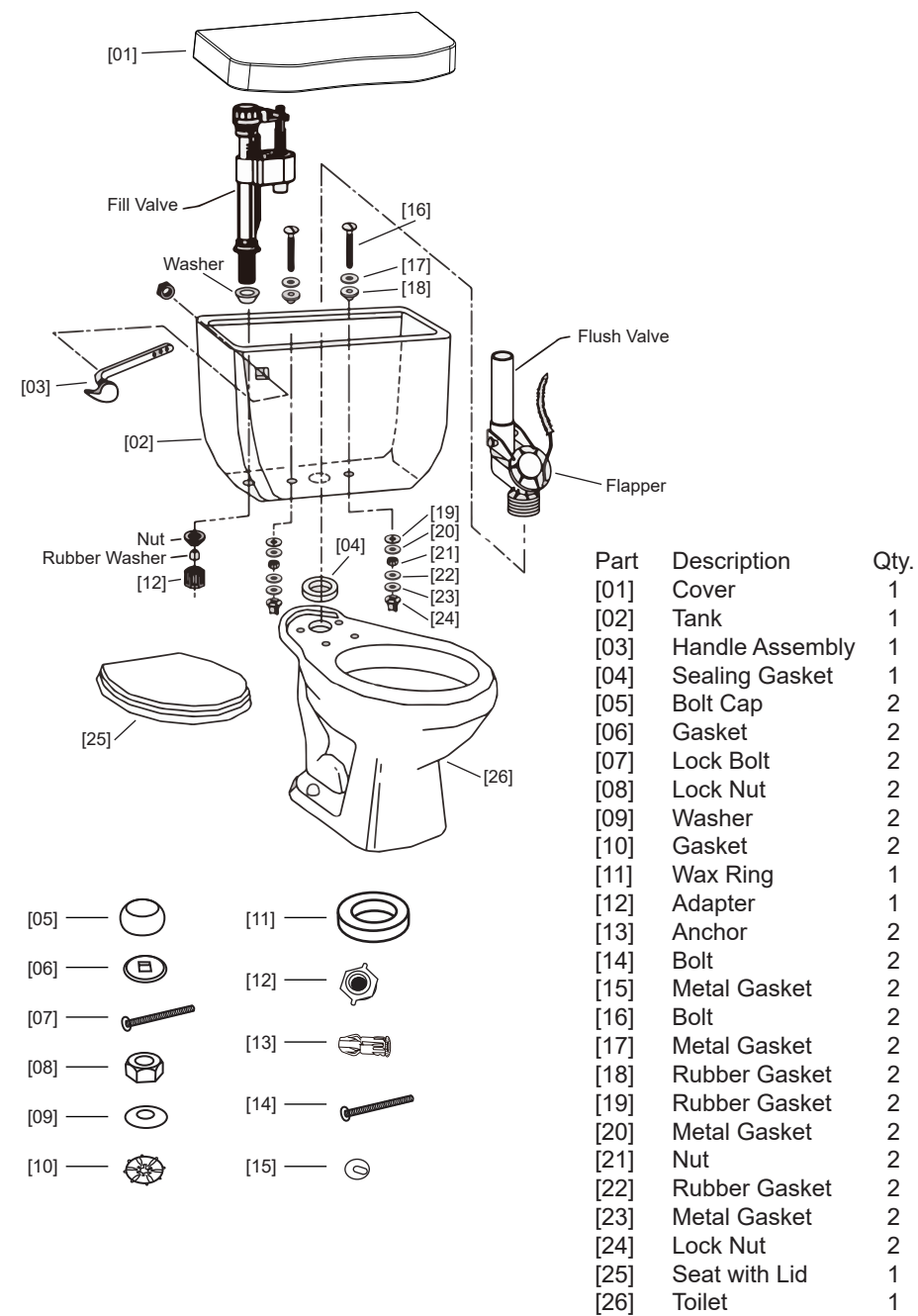
TL-AZ070



TL-AZ071



TOILET COMPONENTS



TOILET INSTALLATION

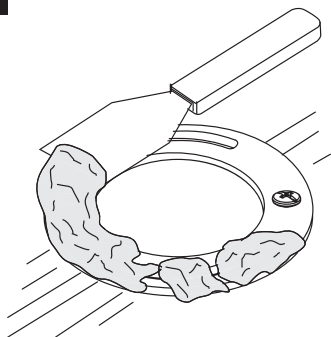
⚠ ATTENTION

- To avoid personal injury or property damage, identify components and read all instructions before installing.
- Follow the instructions below to remove your old toilet and install ANZZI TOILET. Toilet Flange is not provided. You may need to buy it for new installation.

1

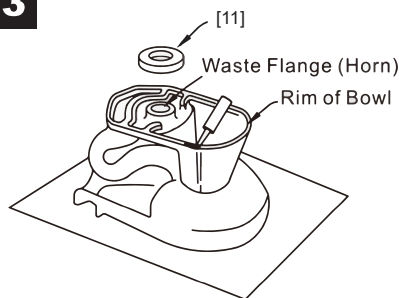
- Turn off the water supply and flush the tank completely. Remove remaining water from tank and bowl with towel or sponge.
- Disconnect and remove the old water supply line.
- Remove the bowl from the floor by removing the bolt caps and the floor bolt nuts.
- Temporarily plug the floor flange with a towel or cover to block sewer gases from escaping.
- NOTE: The mounting surface should be clean and level before the new toilet is installed.

2



Remove existing bolts and wax (if necessary).

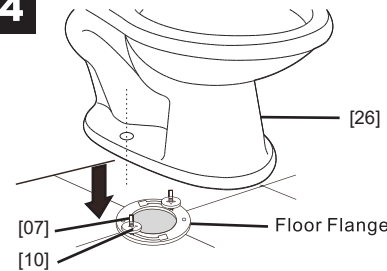
3



Place the Toilet [26] carefully upside down on a soft surface to prevent any scratches. Position the Wax Ring [11] evenly around the waste flange (horn), ensuring the tapered end faces outward. Apply a thin layer of sealant evenly around the toilet base.

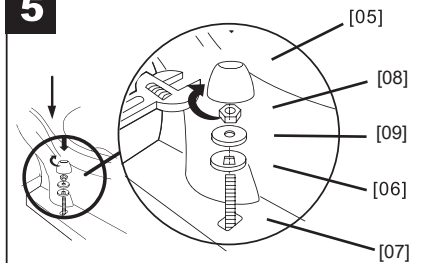
INSTALLATION

4



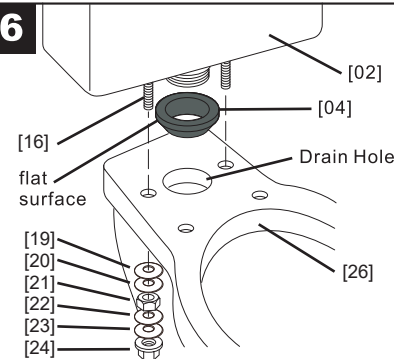
Slide the **Lock Bolts [07]** into the Floor Flange until they reach the stopping point. Position the **Gaskets [10]** onto the **Lock Bolt [07]**, ensuring their flat surface faces downward, and slide them to the stopping point.
Position **Toilet [26]** on **Floor Flange**. Make sure the bolts go through the holes of the **Toilet [26]**.
Attention: Do not shake the toilet back and forth as this may damage the seal.

5



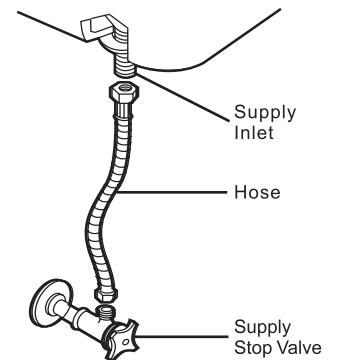
Slide the **Gaskets [06]** and **Metal Washers [09]** onto the **Lock Bolt [07]**. Tighten the **Lock Nuts [08]** to secure. DO NOT OVER TIGHTEN!
Cover the **Lock Bolt [07]** with **Bolt Caps [05]**. Cut the tail of **Lock Bolts [07]** if needed.
Attention: Pour water into bowl to prevent the escape of sewer gas. Make sure the **Gaskets [06]** with mark "This side up" faces upward.

6



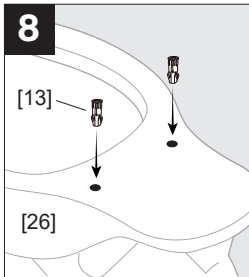
- Secure the **Sealing Gasket [04]** to the **Drain Hole**, ensuring its flat surface faces upward.
- Carefully position the **Tank [02]** onto the **Toilet [26]**.
- Remove any additional parts from **Bolts [16]**, leaving only the **Metal Gaskets [17]** and **Rubber Gaskets [18]** in place.
- Insert the **Bolts [16]** through the holes in the **Tank [02]** and align them with the corresponding holes on either side of the **Toilet's [26]** drain hole.
- Place the **Rubber Gaskets [19]** and **Metal Gaskets [20]** onto the **Bolts [16]** in the specified order. Fasten the **Tank [02]** by carefully tightening the **Nuts [21]**.
Avoid overtightening to prevent damage.
- Slide the **Rubber Gaskets [22]** and **Metal Gaskets [23]** on to the **Bolts [16]**. Tighten the **Lock Nuts [24]** to secure.

7

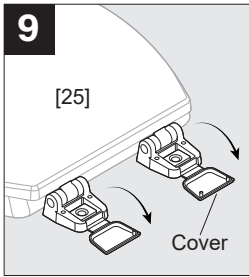


- Connect the **Hose** (not provided) to the **Supply Inlet** of the toilet and the **Supply Stop Valve**. Use the **Adapter [12]** between the **Supply Inlet** and the **Hose** if needed.
- Tighten the tank connection coupling nut 1/4 turn beyond hand tight.
- Turn on the **Supply Stop Valve** and allow the toilet tank to fill.
- Check for leakage at all connections. Tighten if necessary.
DO NOT OVER TIGHTEN.

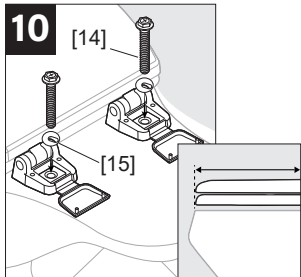
INSTALLATION



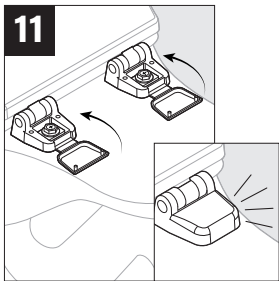
Install the Anchors [13] to the Toilet [26].



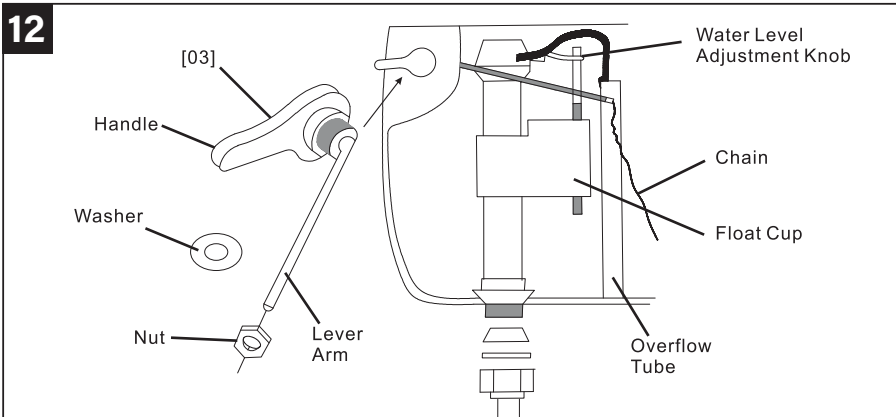
Open the Cover of Seat with Lid [25].



Place the Seat with Lid [25] onto the Toilet [26]. Align the Seat [25] with the Toilet [26] for proper positioning. Attach the Metal Gasket [15] to the Seat with Lid [25], then insert the Bolt [14] through both components. Secure the Bolt [14] by tightening it firmly, but avoid overtightening.



Close the Cover.



- a. Remove the Nut and Washer from the Handle Assembly [03]. Install the Handle Assembly [03] to the outside of Tank [02] as the figure shows. Connect the Chain to the end of the Lever Arm. Adjust the length of the Chain so that it can pull up the flapper when pushing down the Handle Assembly [03] and can be closed when releasing the Handle Assembly [03].
- b. Adjust water level in tank by turning Water Level Adjustment Knob to move Float Cup up or down.
Notice: Water level should be lower than the top of Overflow Tube.
- c. Gently place the Cover [01] onto the top of the Tank [02] to finish the installation.

CLEANING and MAINTENANCE

When cleaning your toilet, wash it with mild, soapy water, rinse thoroughly with clear water and dry with a soft cloth. Avoid detergents, disinfectants, or cleaning products in aerosol cans. NEVER use abrasive scouring powders or abrasive pads on your toilet seat. Some bathroom chemicals and cosmetics may damage the seat's finish.

ATTENTION: Do not use in-tank cleaners. Products containing chlorine (calcium hypochlorite) can seriously damage fittings in the tank. This damage can cause leakage and property damage. ANZZI shall not be responsible or liable for any tank fitting damage caused by the use of cleaners containing chlorine (calcium hypochlorite).

TROUBLE SHOOTING

Symptoms	Probable Causes	Trouble Shooting
Poor flush.	Supply Stop Valve is not fully open.	Open the Supply Stop Valve
Toilet discharges water continuously	The Chain connecting to the Lever Arm is too short	Adjust the length of Chain
Excessive noise when tank is filling.	Flush Valve is blocked	Remove dirt or obstruction from the valve head. Flush the lines.