

# IMPORTANT, RETAIN FOR FUTURE REFERENCE: READ CAREFULLY IMPORTANT SAFETY INSTRUCTIONS

When using electrical products, basic precautions should always be followed.

**WARNING:** These products may represent a possible shock or fire hazard if improperly installed or attached in any way. Products should be installed in accordance with this install guide, current electrical codes and/or the current National Electric Code (NEC).

## WARNING:

- Risk of electric shock - Do not use product where directly exposed to water.
- This product is not a toy.
- Only use the power supply applied; using a different one can damage the product.
- For safety reasons, do not open this product and use only in the manner intended by the manufacturer.
- Do not roll up when using. Please spread out the Strip Light before connecting to power supply.

## Controller Module

Controller button has functions:

Single click - On/Off

Press and Hold - Dimming

Press and hold the button for 3 seconds when the Strip Light is Off to enter pairing mode or reset.

## RF Remote Control:

ON: Turns On the Strip Light

OFF: Turns Off the Strip Light

UP: Increases brightness to White Light

DOWN: Decreases brightness to White Light

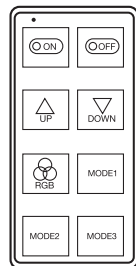
RGB: Changes Solid Colors

MODE1: Flash Colors

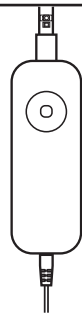
MODE2: Strobe Colors

MODE3: Fade Colors

You can sync up to 25 units or more with one remote control. Turn unit On and press the ON buttons repeatedly within 30 seconds. If the unit is controlled, syncing is finished.



Range: 98 feet



## TROUBLESHOOTING TIPS

If you are having difficulty connecting:

- Make sure the Wi-Fi network is a 2.4 GHz network. Smart Strip Light will not connect to a 5 GHz network.
- Test your Wi-Fi network with other devices such as your phone to make sure it is operating properly.
- The Wi-Fi connection may not have good coverage during set up. Try moving the Smart Strip Light closer to your Wi-Fi router.
- Your Wi-Fi network password is case sensitive, make sure you are entering correctly.

Please also check the App User Guide for more information

This device complies with Part 15 of the FCC Rules.

Operation is subject to the following two conditions:

- (1) This device may not cause harmful interference, and
- (2) this device must accept any interference received, including interference that may cause undesired operation.

**NOTE:** This equipment has been tested and found to comply with the limits for a Class B digital device, pursuant to part 15 of the FCC Rules. These limits are designed to provide reasonable protection against harmful interference in a residential installation. This equipment generates, uses and can radiate radio frequency energy and, if not installed and used in accordance with the instructions, may cause harmful interference to radio communications. However, there is no guarantee that interference will not occur in a particular installation. If this equipment does cause harmful interference to radio or television reception, which can be determined by turning the equipment off and on, the user is encouraged to try to correct the interference by one or more of the following measures:

- Reorient or relocate the receiving antenna.
- Increase the separation between the equipment and receiver.
- Connect the equipment into an outlet on a circuit different from that to which the receiver is connected.
- Consult the dealer or an experienced radio/TV technician for help.

**LIMITED WARRANTY.** This product is warrantied to be free from defects in workmanship and materials for up to one year from date of purchase. If the product fails within the warranty period, please contact Feit Electric at [info@feit.com](mailto:info@feit.com), visit [feit.com/contact-us](http://feit.com/contact-us) or call 1-866-326-BULB (2852) for instructions on replacement or refund. **REPLACEMENT OR REFUND IS YOUR SOLE REMEDY. EXCEPT TO THE EXTENT PROHIBITED BY APPLICABLE LAW, ANY IMPLIED WARRANTIES ARE LIMITED IN DURATION TO THE DURATION OF THIS WARRANTY. LIABILITY FOR INCIDENTAL OR CONSEQUENTIAL DAMAGES IS HEREBY EXPRESSLY EXCLUDED.** Some states and provinces do not allow the exclusion of incidental or consequential damages, so the above limitation or exclusion may not apply to you. This warranty gives you specific legal rights, and you may also have other rights which vary from state to state or province to province.

Feit Electric Co.  
4901 Gregg Road  
Pico Rivera, CA 90660  
[www.feit.com](http://www.feit.com)

MODEL:  
TAPE16/RGBW/AG  
ITM. / ART. 1455226



# Color Changing - 16ft. Smart LED Strip Light

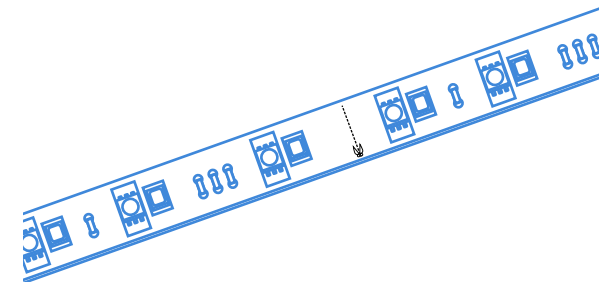
## Quick Install Guide



Works with  
Feit Electric app



Only supports  
2.4GHz Wi-Fi  
networks



## ELECTRICAL RATINGS:

INPUT: 120VAC 60HZ 0.3A

OUTPUT: 24V DC, MAX 1A

STRIP LIGHT: 12W

FEIT ELECTRIC COMPANY  
Pico Rivera, CA, USA  
(800) 543-3348 | FAX (562) 908-6360  
[www.feit.com](http://www.feit.com)

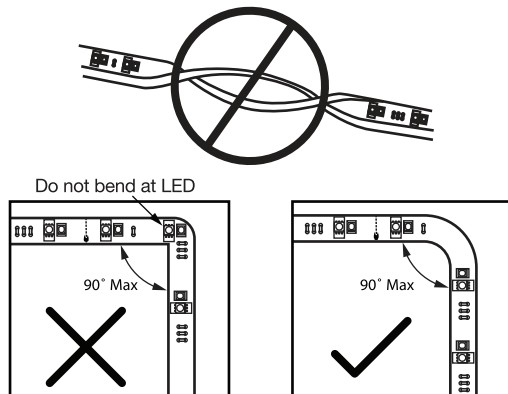
# Getting Started:

## 1 Download the Feit Electric app on your smart device



## 2 Pre-Installing

- Measure to the desired length before installation.
- Cut to length at scissor marks on Strip Light (ensure the power supply is not plugged in at the wall outlet).
- Clean the area thoroughly (surface must be free of dust, dirt or grease).
- Avoid bending the strip light which may damage the LEDs.
- Avoid removing and relaying the Strip Light multiple times as the adhesive may wear off.



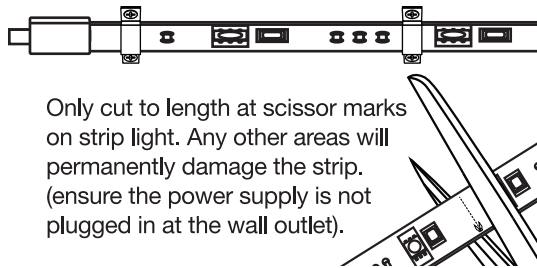
## Need Help?

FAQs and the latest versions of user guides can be found at [feit.com/help](http://feit.com/help) and [feit.com/smart](http://feit.com/smart).

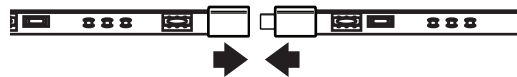
To reach customer support please visit [feit.com/contact-us](http://feit.com/contact-us)

## 3 Mounting the Strip Light

Peel adhesive tape from back of Strip Light and apply to mounting surface. Screw in mounting clips for outdoor locations or hard to stick-to surfaces.

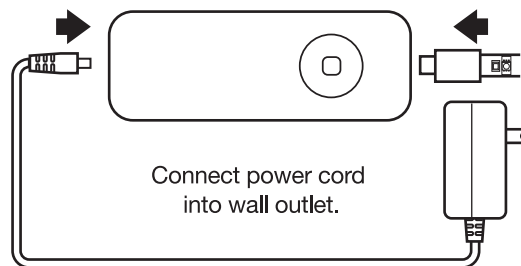


Optional - Add another Feit Electric Smart LED Strip Light (sold separately) to extend up to 32 feet.



## 4 Connect Controller Module

Connect the Strip Light to the controller module then connect the plug as shown from the image below.



You are now ready to use the Strip Light via RF Remote Controller and/or In-APP.

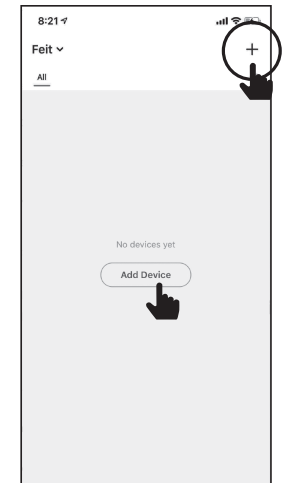
To set up smart features proceed to steps 5 and 6. Be sure that your Strip Light is on pairing mode. Please refer to the "Controller Module" section for details. Note: Unit will stop blinking after 3 minutes.

## 5 Launch and use the Feit Electric app to complete the set up

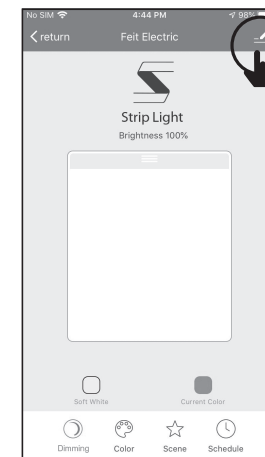
Tap **Add Device** or the + sign, then select "Lighting Device" and confirm. You will be prompted to enter your Wi-Fi network & password.

Unit must be rapidly blinking to connect. If not already blinking, press and hold the button for 3 seconds when the Strip Light is Off to enter pairing mode.

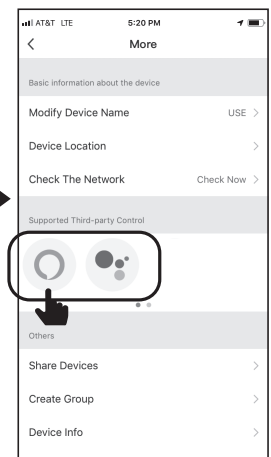
Be sure to connect to a 2.4 GHz Wi-Fi network that covers your installation location.



## 6 (Optional) Connect to Google Assistant or Alexa using the in App guide



Tap Pen icon



Choose **Alexa** or **Google Assistant**