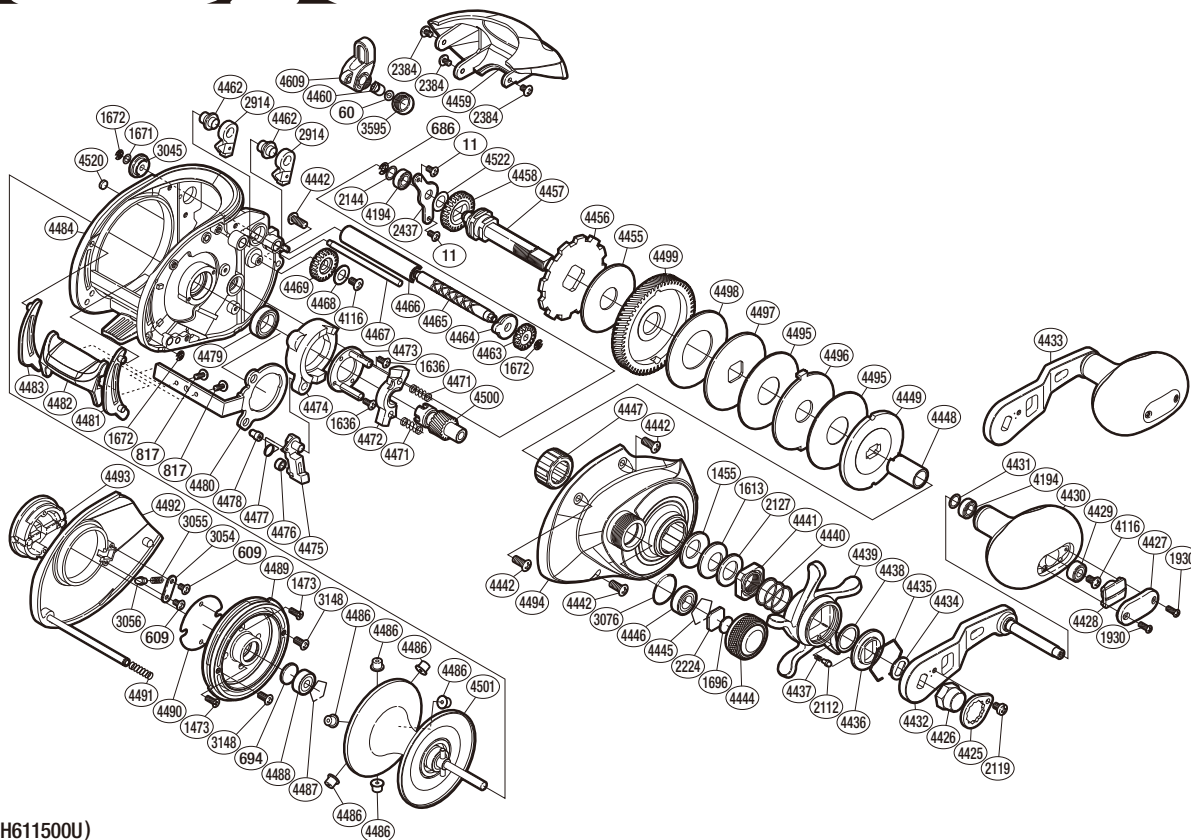


SHIMANO

TRAX

TRX-500PG



(51RH611500U)

#	Part No.	Description	#	Part No.	Description	#	Part No.	Description
11	10MT0	Screw	4428	10B97	Handle Knob Seal	4469	10FNT	Idle Gear
60	10CFW	Spacer	4429	10KX2	Ball Bearing	4471	104BD	Yoke Spring
609	10MT3	Screw	4430	105ZC	Handle Knob	4472	10472	Yoke
686	105NK	E Lock	4431	10G8G	Washer	4473	10F41	Clutch Cam Retainer
694	10GEU	Spacer B	4432	10A6E	Handle Shank Assembly	4474	10K0Z	Clutch Cam
817	10MPW	Screw	4433	10CFF	Handle Assembly	4475	105ZR	Clutch Pawl
1455	1052E	Coned Disc Spring (8H)	4434	107QM	Drive Shaft Shield	4476	1048B	Clutch Pawl Bushing
1473	10MGK	Screw	4435	10KXX	Click Plate Retainer	4477	104CR	Clutch Pawl Spring
1613	10EW3	Coned Disc Spring (8L)	4436	10J2T	Star Drag Click Plate	4478	108S6	Clutch Pawl Spring Collar
1636	10LVG	Screw	4437	10HZ6	Click Spring	4479	10KX7	Ball Bearing
1671	10BHX	Washer	4438	10G6M	Washer	4480	10QLK	Clutch Plate
1672	105NC	E Lock	4439	10B81	Star Drag	4481	10979	Clutch Bar Guide B
1696	10896	Cast Control Spacer	4440	10HZ2	Star Drag Spring	4482	10CGD	Quick-Fire II Clutch Bar
1930	103NH	Screw	4441	10A3M	Star Drag Nut	4483	10ASP	Clutch Bar Guide A
2119	103GX	Screw	4442	10M6N	Screw	4484	10F13	One-Piece Frame
2122	10BT0	Click Pin	4444	10KDU	Cast Control Cap	4486	10CMM	Brake Collar
2127	10J1N	Star Drag Spacer	4445	10GGN	Bearing Retainer	4487	10GGM	Bearing Retainer
2144	10C47	Washer	4446	104JD	Ball Bearing	4488	10KAE	Ball Bearing
2224	1085F	Spool Tension Spacer	4447	10F37	Roller Clutch Bearing	4489	10FXU	Brake Case
2384	103L2	Screw	4448	10BMV	Roller Clutch Inner Tube	4490	10TUF	Brake Case Spacer
2437	109T3	Drive Shaft Retainer	4449	10D52	Pressure Plate	4491	10KND	Damper Spring
2914	10MWB	Anti-Reverse Pawl	4455	10CLZ	Drag Washer	4492	10D27	Left Side Plate
3045	104SZ	Worm Bushing B	4456	10D75	Anti-Reverse Ratchet	4493	10FX5	Turnkey Dial
3054	10KVM	Click Pin Retainer	4457	10SCP	Drive Shaft	4494	10PX4	Right Side Plate
3055	10B52	Click Spring	4458	10J6Z	Idle Gear	4495	10L8K	Drag Washer
3056	10B50	Click Pin	4459	10NY9	Thumb Rest	4496	10LBD	Eared Washer
3076	108W8	O Ring	4460	10FFV	Line Guide Pawl	4497	10L4Z	Drag Washer
3148	103H1	Screw	4462	10PE1	Anti-Reverse Pawl Shaft	4498	10D3F	Drag Washer
3595	10FJV	Pawl Cap	4463	10FNY	Idle Gear	4499	10CP4	Drive Gear
4116	103E9	Screw	4464	10NCY	Worm Bushing A	4500	10CTV	Pinion Gear
4194	105BP	Ball Bearing	4465	104ZL	Worm Shaft	4501	10L3Y	Spool Assembly
4425	10QUA	Handle Nut Plate	4466	10NG0	Level Wind Guard	4520	108PZ	Anti-Thrust Washer
4426	10FNF	Handle Nut	4467	10GUK	Level Wind Guide	4522	10HWW	Washer
4427	108SQ	Handle Knob I.D. Plate	4468	10GA2	Washer	4609	10N9N	Line Guide

Please note that the number of adjusting washers may not be the same as shown in the exploded views.
(Adjustment will vary with each individual product.)

(241120)_002