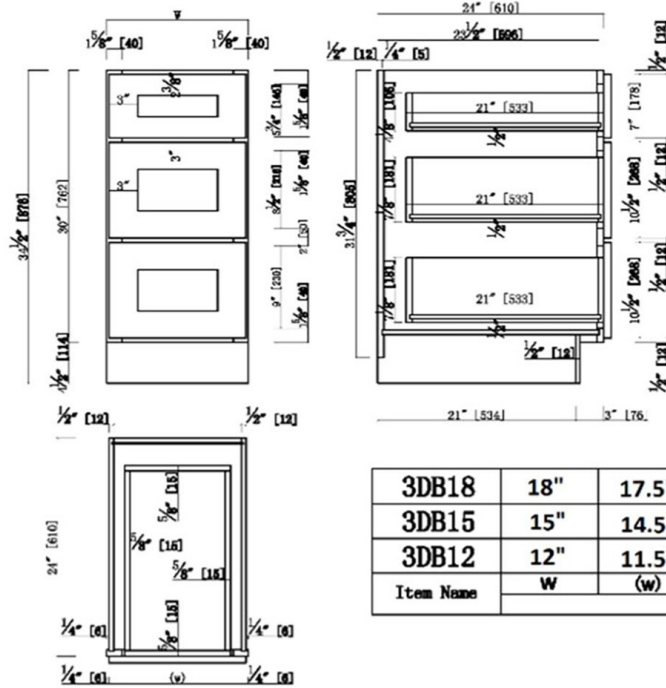


Brookings Fully Assembled Shaker Drawer Base Kitchen Cabinet 18x34.5x24

White



3DB18	18"	17.5"
3DB15	15"	14.5"
3DB12	12"	11.5"
Item Name	W	(w)

SPECIFICATIONS

MATERIAL CONSTRUCTION: Wood
WOOD SPECIES: Maple
ASSEMBLED DIMENSIONS: 34.5" H x 18" L x 24" D
ASSEMBLED WEIGHT: 72 lbs.
KITCHEN CABINET TYPE: Drawer Base
MOUNTING TYPE: Floor Mount
CONSTRUCTION TYPE: Face Frame
HINGE STYLE: N/A
DOOR STYLE: 0 wood shaker door
NUMBER OF DRAWERS: 3
DRAWER DIMENSIONS 1: 4.17" H x 21" L x 14.44" D
DRAWER DIMENSIONS 2: 7.12" H x 21" L x 14.44" D
DRAWER DIMENSIONS 3: 7.12" H x 21" L x 14.44" D
DWR BOX MATERIAL: Solid Wood
DWR CONSTRUCTION: Dove Tail
DWR GLIDE: STD Easy Glide
FAKE DWR QTY: 0
FAKE DWR LOCATION: N/A

NUMBER OF SHELVES: 0
SHELF STYLE: N/A
ADJUSTIBLE SHELVES: N/A
SHELF ADJUSTIBILITY INCREMENTS: N/A
SHELF DIMENSIONS: N/A" W x N/A" D
SHELF THICKNESS: N/A
SHELF MATERIAL: N/A
FACE FRAME MATERIAL: Solid Maple
SIDES MATERIAL: Plywood
BOTTOM MATERIAL: Plywood
BACK PANEL MATERIAL: Plywood
BACK BRACE MATERIAL: Wood
TOE KICK INSET WIDTH: 3

WARRANTY: 1-Year limited warranty
LEGAL FOR SALE IN CALIFORNIA: Yes
CARB COMPLIANT: CARB Phase 2
TSCA TITLE VI COMPLIANT: Yes



TYPE:
JOB:
ORDER CODE:
APPROVALS: