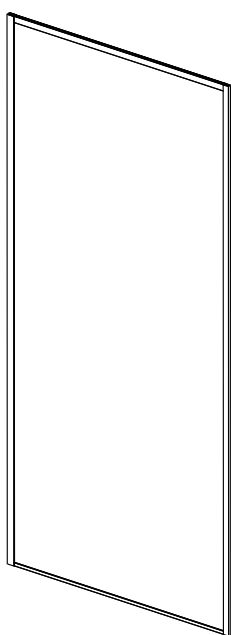
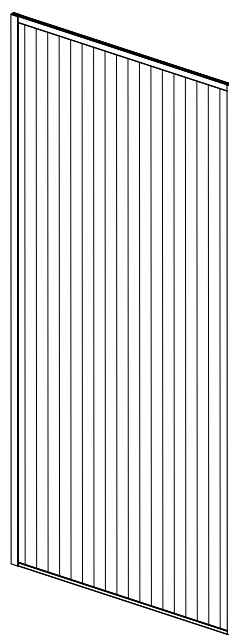




ITEM: SD-AZ22-01\*\*  
SD-AZ22-01\*\*-FL  
ANZZI GLASS SHOWER DOOR  
INSTALLATION & OPERATION MANUAL  
V1.0  
03/21/2025



SD-AZ22-01\*\*



SD-AZ22-01\*\*-FL

# DON'T WAIT! REGISTER NOW!

Register your product within 90 days to ensure it is recognized as a purchase and covered under warranty.

Register online at <https://anzzi.com/pages/register> or scan the QR code on PG. 2.



## PRODUCT REGISTRATION\*

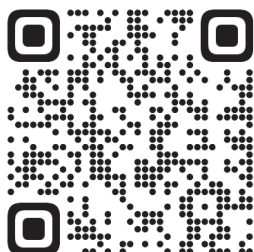
**IMPORTANT:** Warranty will not be recognized unless product is registered.

Register online at <https://anzzi.com/pages/register> or Scan the QR code below.

Registering your product maximizes your warranty benefits and ensures prompt service and support.

1

USE YOUR PHONE CAMERA  
TO SCAN THE QR CODE



2

FILL IN A QUICK  
REGISTRATION FORM

Thank you for your purchase!

Registering your products ensures you maximize your warranty benefits and receive prompt service and support.

Name\*

Email\*

City\*

Order #\*

Installer Name

...

Model Purchased\*

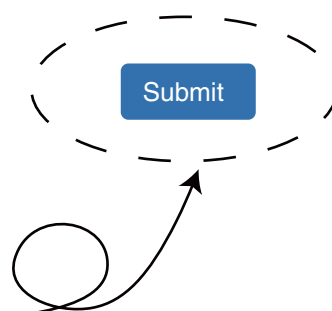
Installer Phone Number

Customer Age Range

Submit

3

CLICK SUBMIT AND  
ENJOY PEACE OF MIND



Need help? For technical support call 305-614-4070 or visit us at [www.ANZZI.com](http://www.ANZZI.com)



# **STOP!**

**READ BEFORE YOU PROCEED!**

**TO KEEP GLASS FROM BREAKING:**

**Use two people when installing.**

**This product is heavy.**

# SAFETY PRECAUTIONS

## General Safety Warnings

1. **Read Instructions First** – Carefully read the entire installation manual before beginning. Improper installation may result in product failure or injury.
2. **Use Proper Tools** – Always use the recommended tools and hardware to ensure safe and correct installation.
3. **Work with a Partner** – Due to the weight and fragility of glass panels, never attempt to install them alone. A minimum of two people is required.

## Handling Tempered Glass Panels

4. **Do Not Strike or Edge-Load the Glass** – Tempered glass is strong but can shatter if struck on its edges or corners.
5. **Always Carry Glass Vertically** – Transport and handle glass panels in an upright position to reduce the risk of breakage.
6. **Wear Protective Gear** – Use safety gloves, closed-toe shoes, and eye protection when handling glass.
7. **Inspect Before Installation** – Check for cracks, chips, or defects before installation. Do not install damaged glass panels.
8. **Do Not Drill or Modify the Glass** – Altering the glass in any way can compromise its integrity and cause it to shatter.
9. **Keep the Glass in a Secure Area Until Installation** – Store glass panels upright on a non-slip surface, away from heavy traffic areas.
10. **Avoid Sudden Temperature Changes** – Do not expose tempered glass to extreme temperature shifts, as this can cause it to shatter.

## Installation Precautions

11. **Secure the Work Area** – Ensure the installation site is free of obstacles, water, or debris to prevent slipping or dropping the glass.
12. **Check Wall and Floor Strength** – Ensure mounting surfaces are sturdy enough to support the shower door assembly.
13. **Tighten Fasteners Securely but Cautiously** – Over-tightening hardware can stress and damage glass components.
14. **Follow Manufacturer's Weight Limits** – Ensure that the structure can support the weight of the installed shower doors.

## Post-Installation Warnings

15. **Regularly Check for Loose Hardware** – Periodically inspect hinges, rollers, and handles for stability.
16. **Do Not Hang Items on Glass Doors** – Hanging towels or objects on the doors may stress the hardware or glass, leading to breakage.



PROTECTIVE EQUIPMENT MUST BE WORN WHEN HANDLING GLASS



# INSTALLATION GUIDE

## BEFORE YOU BEGIN

- Please check the product for damage and missing parts immediately upon delivery. Damage reported after installation will not be covered under our warranty. Please handle the product with care. Avoid impacting the sides and edges of the glass.
- Consult your local building codes before installation.
- If this unit is being installed in new construction, please install all required plumbing and drainage before installing the shower. Use a licensed plumber or contractor for all plumbing installations if required by local code.
- Before beginning installation, make sure all surfaces are level, solid and will support the total weight of the unit. Also, make sure the walls are at right angles. An uneven installation surface, rounded corners, or improperly angled side walls can cause serious installation problems. Please note that some adjustments and drilling might be necessary during the installation process.
- Protect all primary surfaces of the product during installation. Never place the glass directly on a tile floor.



## WARNING

- Install this unit on a finished threshold and against finished walls.
- Avoid drilling into hidden pipes or electrical cables when making holes in the walls.
- Due to the weight of this product, at least two people are needed for a safe installation.
- When cutting or drilling metal components or handling glass, wear protective eyewear, gloves, and closed-toe shoes to minimize the risk of personal injury.
- Failure to follow these instructions may result in personal injury, property damage, or product failure, and could void the warranty.

# INSTALLATION GUIDE

## BEFORE YOU BEGIN



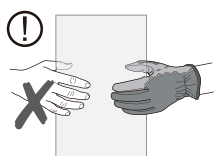
### ATTENTION

- Surface of the threshold must be level for proper installation.
- This model requires a minimum 0.7" (18 mm) flat level threshold space for installation.

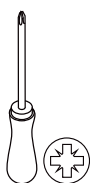
## Tools Required



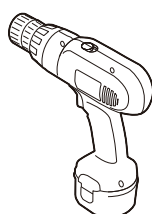
- This product is heavy and requires two people to install.



- Use cut-resistant, non-slip gloves to reduce the risk of personal injury and to hold the glass firmly.



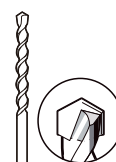
Phillips  
Screwdriver



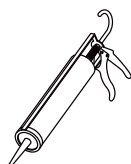
Drill



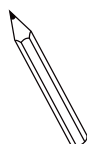
1/8"  
(3mm)  
Drill Bit



15/64"  
(6mm)  
Drill Bit



100%  
Silicone  
Sealant



Pencil



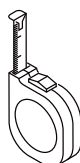
Rubber  
Mallet



Safety  
Glasses



Stud Finder



Tape  
Measure



Level



**This product is heavy and requires two people to install.**

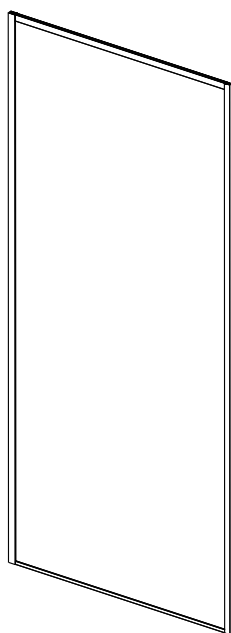


## **WARNING**

To prevent damage to the glass and potential injury, carefully follow the instructions on **page 4**.

## **PARTS**

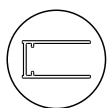
SD-AZ22-01\*\*



[01]x1



[02]x1



[03]x4



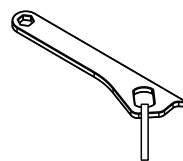
[04]x3  
(#8x1.37"  
/ST4x35)



[05]x1  
(#8x1.18"  
/ST4x30)

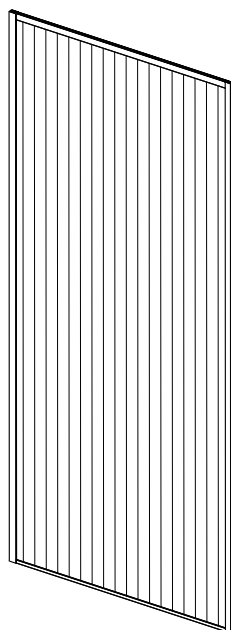


[06]x1



[07]x1

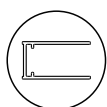
SD-AZ22-01\*\*-FL



[01]x1



[02]x1



[03]x4



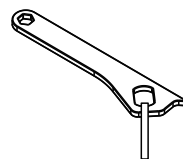
[04]x3  
(#8x1.37"  
/ST4x35)



[05]x1  
(#8x1.18"  
/ST4x30)



[06]x1

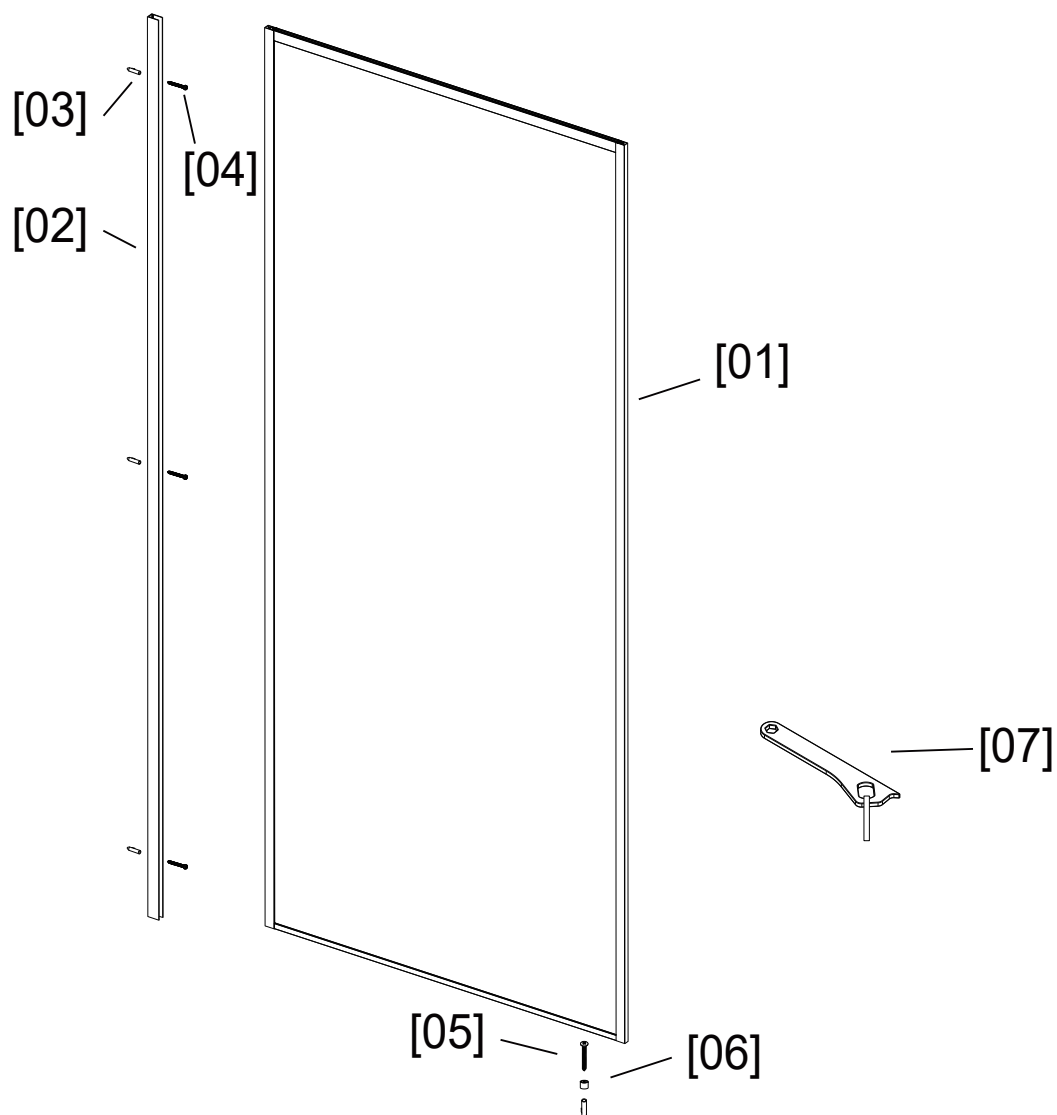


[07]x1

## **WARNING**

To prevent damage to the glass and potential injury, carefully follow the instructions on **page 4**.

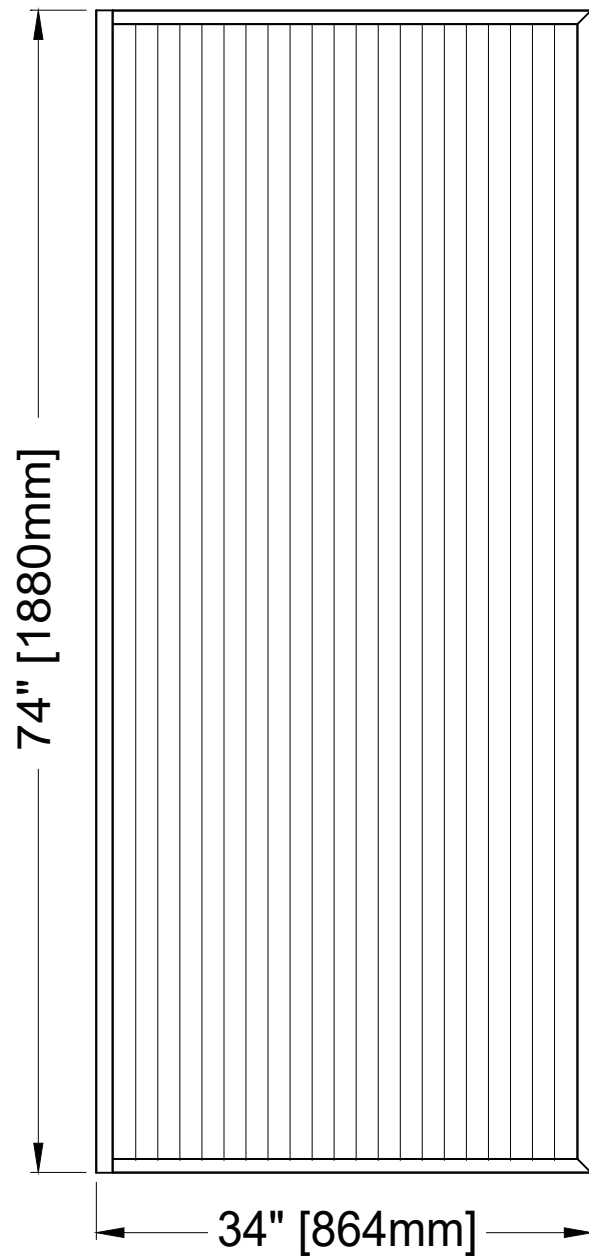
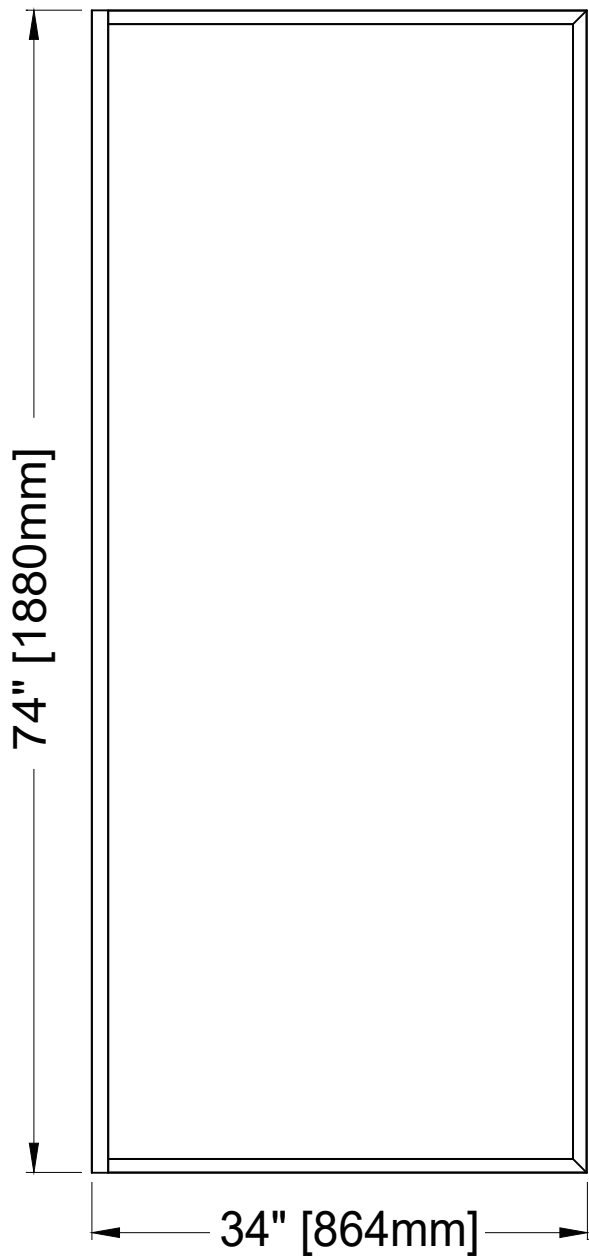
## **ASSEMBLY**



Part	Description	Qty.
[01]	Shower Panel	1
[02]	Wall Jamb	1
[03]	Anchor	4
[04]	Screw #8x1.37" [ST4x35]	3
[05]	Screw #8x1.18" [ST4x30]	1
[06]	Pin	1
[07]	Support	1

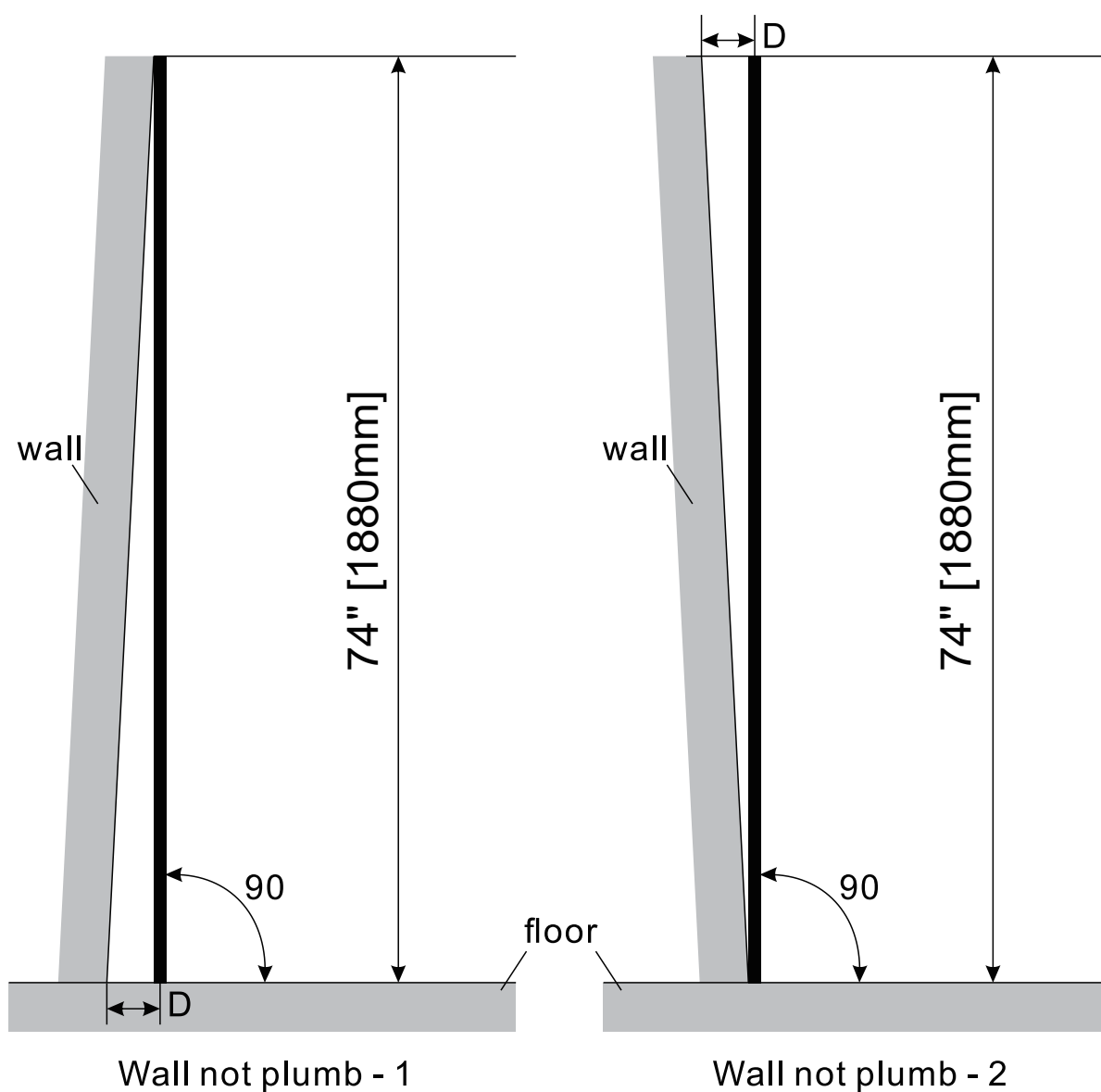


SD-AZ22-01\*  
34" x 74"



## **ATTENTION**

- To prevent personal injury or property damage, ensure all components are identified and carefully read all instructions before installation.
- This model requires a **minimum flat level threshold of 0.7" (18mm)** for proper installation.
- The installation shown is for a **shower panel installed on the left**. To install the shower panel on the right, **reverse the installation process**.
- Use a **plumb bob** or a **74.7" straight edge** to check if the wall is plumb to the floor for proper shower panel installation.
  - If the distance **D** (measured from the intersection of the wall and floor to the point projected from the 74" wall height) **exceeds 0.59" (15mm)**, consult a builder to **rebuild the wall** before proceeding.



# INSTALLATION INSTRUCTIONS

## Step 1

1. Position the **Wall Jamb [02]** on the wall as shown in the figure. Adjust it to ensure it is plumb. (Refer to Fig. 1, Fig. 1.1)
2. Mark the **screw hole positions** through the **Wall Jamb [02]**. Draw lines along the side of the **Wall Jamb [02]** on the wall as indicated in the figure, then remove the **Wall Jamb [02]**. (Refer to Fig. 1, Fig. 1.1)
3. Drill **15/64" holes** at the marked locations. (Refer to Fig. 1.2)
4. Insert the **Anchors [03]** into the drilled holes. (Refer to Fig. 1.3)
5. Reposition the **Wall Jamb [02]** on the wall as shown in the figure. Adjust it to align with the **marked line** and ensure it is plumb. Secure it with **Screws [04]** using a **Screw Driver**. (Refer to Fig. 1, Fig. 1.4)

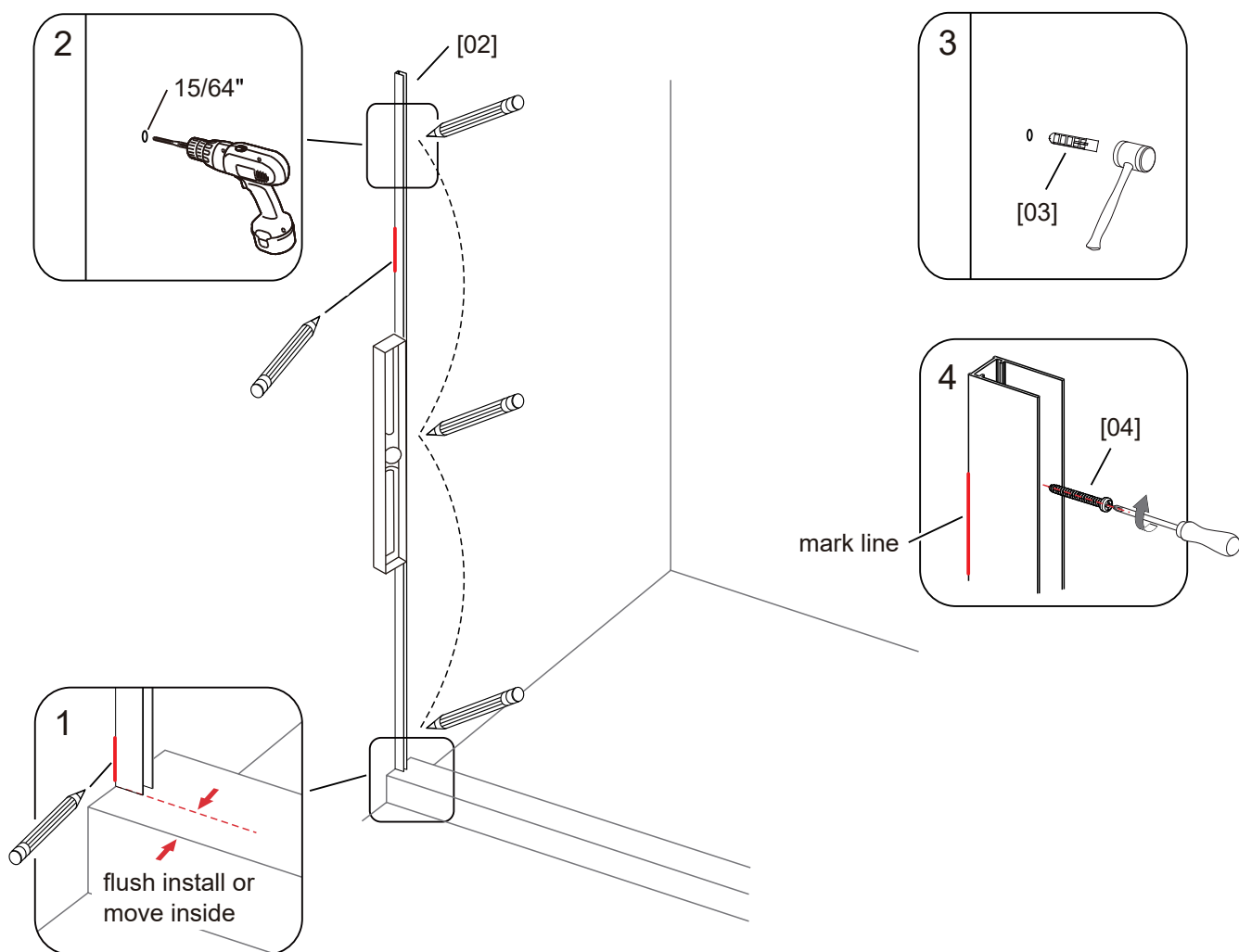


Fig 1

## Step 2

1. For the **Wall Jamb [02]** flush with the outer side of the **threshold**, mark the screw hole position by aligning with a **center line 0.72" [18.3mm]** from the **outside of the threshold** and a **center line 32.7" [830mm]** from the **wall**, as shown in the figure. (Refer to Fig. 2, Fig. 2.1)
2. For the **Wall Jamb [02]** positioned behind the outer side of the **threshold**, mark the screw hole position by aligning with a **center line A + 0.72" [18.3mm]** from the **outside of the threshold** and a **center line 32.7" [830mm]** from the **wall**, as shown in the figure. (Refer to Fig. 2, Fig. 2.1)
3. Drill **15/64" holes** at the marked locations. (Refer to Fig. 2.2)
4. Insert the **Anchors [03]** into the drilled holes. (Refer to Fig. 2.3)
5. Position the **Pin [06]** on the threshold as shown in the figure. Ensure the flat surface of the **Pin [06]** faces the threshold. Secure it with **Screws [05]** using a **Screw Driver**. (Refer to Fig. 2, Fig. 2.4)

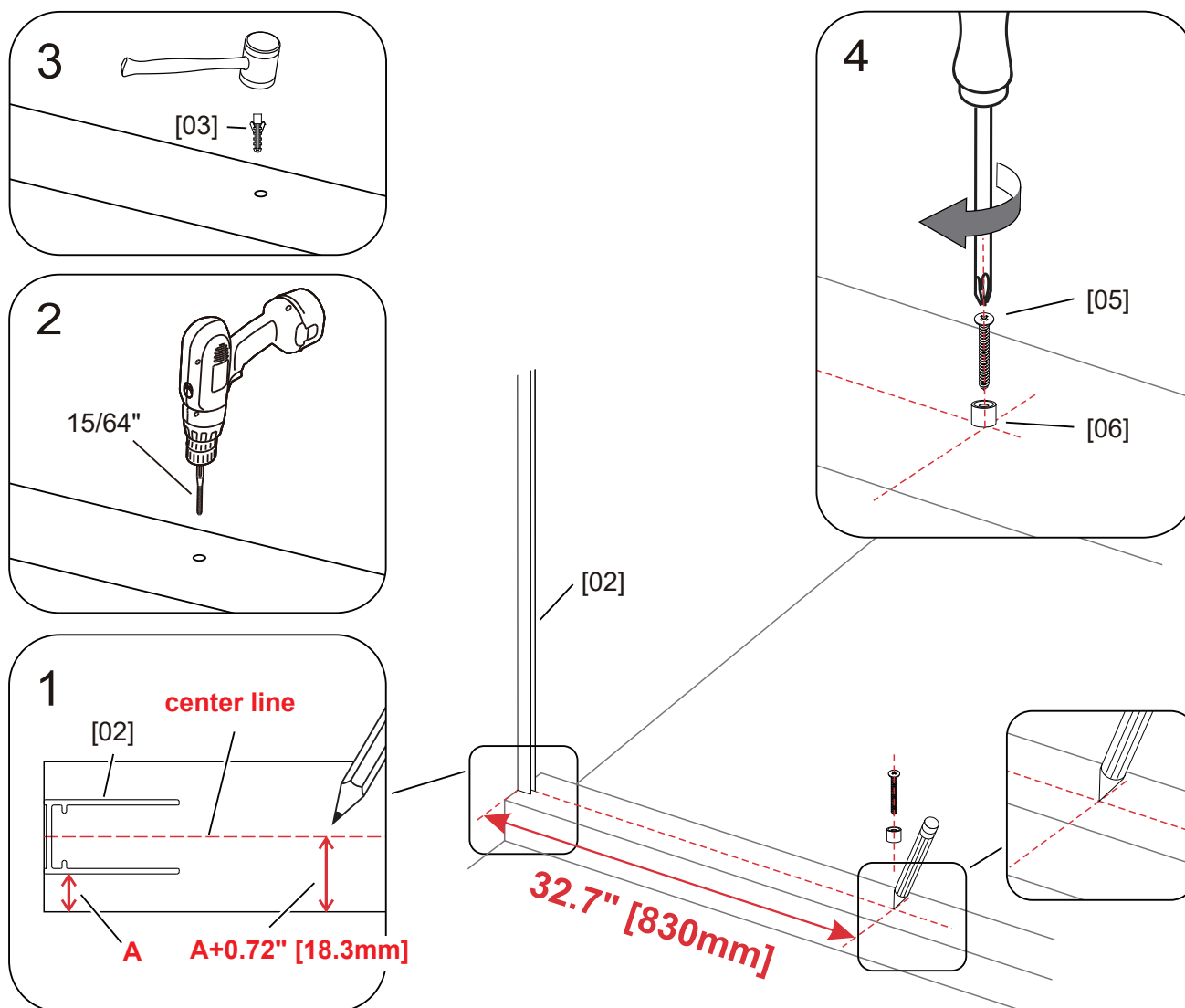


Fig 2

## **WARNING**

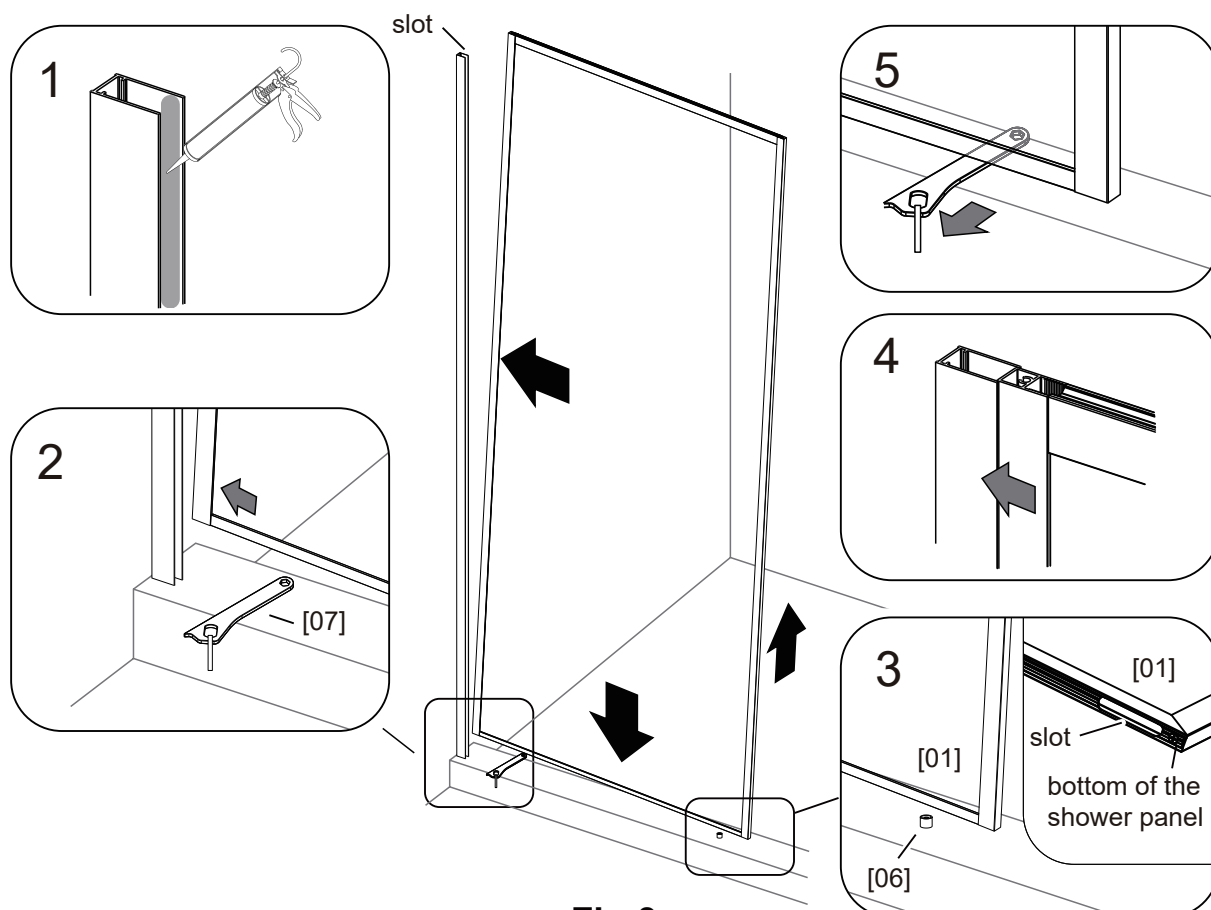
To prevent damage to the glass and potential injury, carefully follow the instructions on **page 4**.

### **Step 3**

1. Apply a **high-quality silicone sealant** at the groove of the **Wall Jamb [02]**, as shown in the figure. (Refer to Fig. 3.1)
2. Place the **Support [07]** on the threshold, positioned closed to the **Wall Jamb [02]**. (Refer to Fig. 3.2)
3. Hold the **Shower Panel [01]** at an angle, as shown in the figure, and insert its corner into the **Wall Jamb [02]**. Ensure the **slots** are positioned on the lower side of the **Shower Panel [01]**. (Refer to Fig. 3.3)
4. Gently place the **Shower Panel [01]** onto the **Support [07]**. (Refer to Fig. 3, Fig. 3.2)
5. Lift the outer side of the **Shower Panel [01]** and place it onto the **Pin [06]**, ensuring that the **Pin [06]** slides into the **slot** of the panel. (Refer to Fig. 3, Fig. 3.3)
6. Push the **Shower Panel [01]** further into the **slot of the Wall Jamb [02]** until it reaches the stopping point. (Refer to Fig. 3.4)
7. Pull the **Support [07]** outward so that the **Shower Panel [04]** fully touches the floor. (Refer to Fig. 3.5)

### **Important:**

- For shower panel with fluted glass, the fluted side must face outward, while the flat side must face inward.



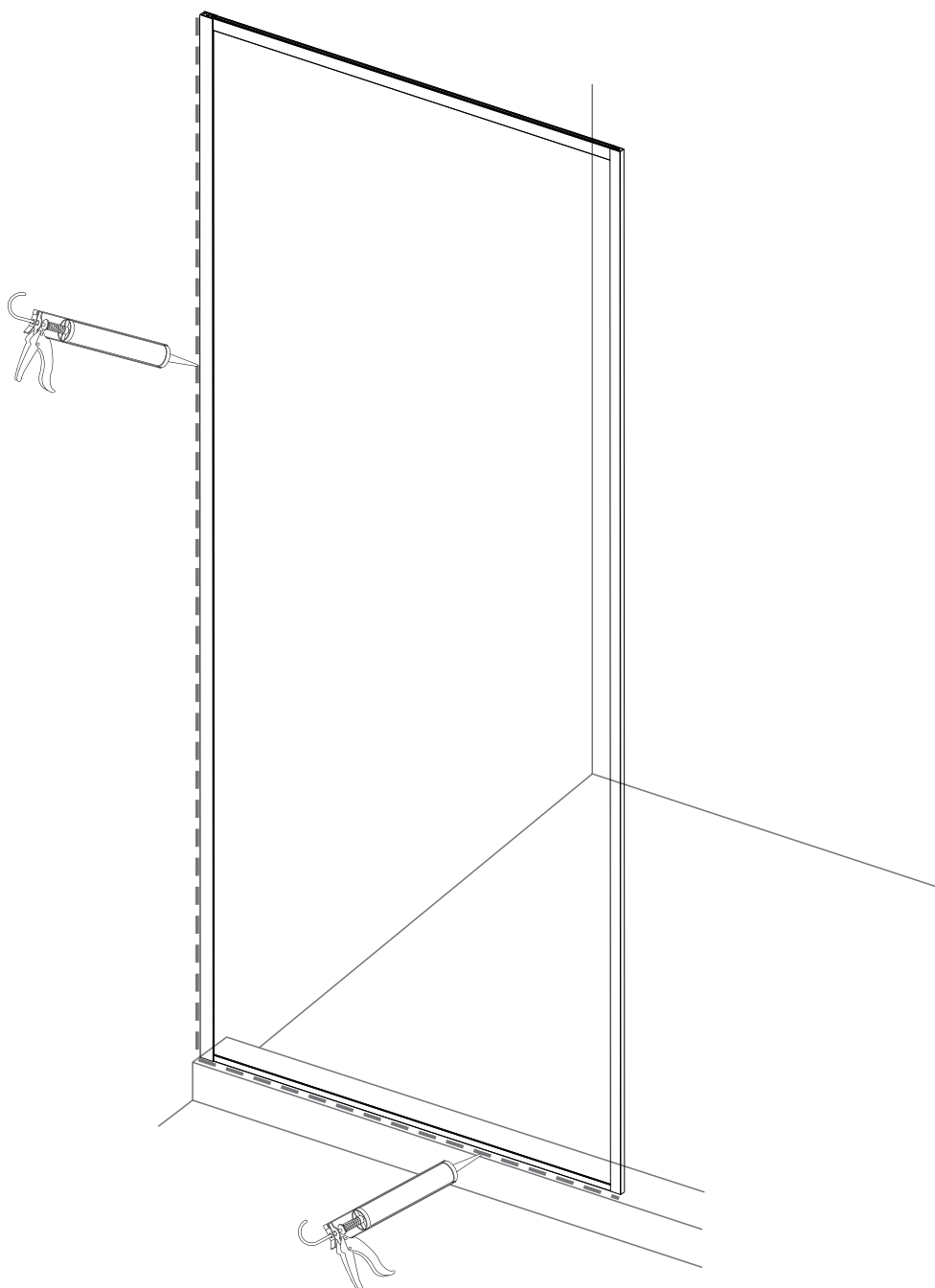
**Fig 3**

## Step 4

1. Apply a **high-quality silicone sealant** at the corner where the **Shower Panel [01]** meets the **threshold**, as well as at the corner formed by the **Wall Jamb [02]** and the **wall**. (Refer to Fig. 4)

### ⚠ Important:

- **Allow 24 hours** for the silicone to **fully cure** before using the shower.



**Fig 4**

## Care & Maintenance

**BASES and BACK WALLS:** Wipe them off after each use with a soft cloth. To clean the acrylic surface, use non-abrasive sprays or cream based cleaners. Avoid the use of aerosol spray cleaners. Never use abrasive cleansers, metal brushes, or scrapers, as they can scratch or dull the surface.

**GLASS:** Wipe off the glass after each use with either a soft cloth or a squeegee to prevent soap buildup and water spots (hard water can etch the surface of the glass over time if left to dry). To avoid damaging the surface, never use abrasive cleaners or cleaning products that contain scouring agents. Likewise, never use bristle brushes or abrasive sponges that can scratch the surface.

**HARDWARE:** To ensure a long-lasting finish, wipe off the metal parts after using with a soft cloth. Do not use abrasive cleaners or cleaning products containing ammonia, bleach, or acid. If accidentally used, rinse the surface as soon as possible to prevent damage to the finish (peeling or corrosion). After cleaning the polished finishes, rinse thoroughly and wipe dry with a soft cloth. Clean stainless steel surfaces at least once a week. When applying stainless steel cleaner or polish to stainless steel hardware, work with (not across) the grain. Never use an abrasive sponge or cloth, steel wool, or wire brush, which may permanently scratch the surfaces.

**NOTE: Regularly inspect the glass and all hardware for misalignment, proper attachment, and damage. Contact ANZZI with any questions or concerns.**

