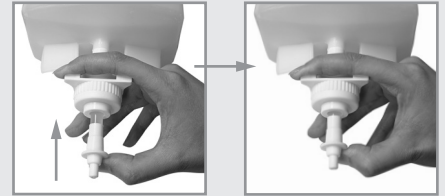


RECOMMENDED: DUE TO VARIATION IN LIQUID/GEL SOAP THICKNESSES, DISPENSER PUMP MAY NEED TO BE PRIMED TO GET IT STARTED:

1. With the container removed from unit, fill container with soap & cap on. Then press the pump **BY HAND** approximately 5 times until soap comes out.
2. Install container in unit, close cover and turn on.



MOUNTING THE DISPENSER

OPTION 1: with DOUBLE-SIDED ADHESIVE

1. Place double-sided self-stick adhesive strips on back of unit and stick onto wall.



For best results, adhere to a smooth surface that is clean and dry. To clean, wipe surface until dry and use rubbing alcohol to clean the surface.



OPTION 2: with MOUNTING HARDWARE

1. Press the button located at the top-rear of the dispenser to open the unit (Fig.1).
2. Remove soap container prior to mounting.
3. Place the dispenser on desired wall location.
3. Mark and install wall anchors.
4. Mount unit using screws and washers.



LOCKING THE UNIT (optional)

1. Close dispenser cover and insert locking key (included) into the button located at the top-rear (Fig.1).
2. Turn key to lock unit, keep key in safe place.

FILLING THE DISPENSER

NOTE: CHECK THE UNIT FOR CORRECT FILL TYPE



FOAMING

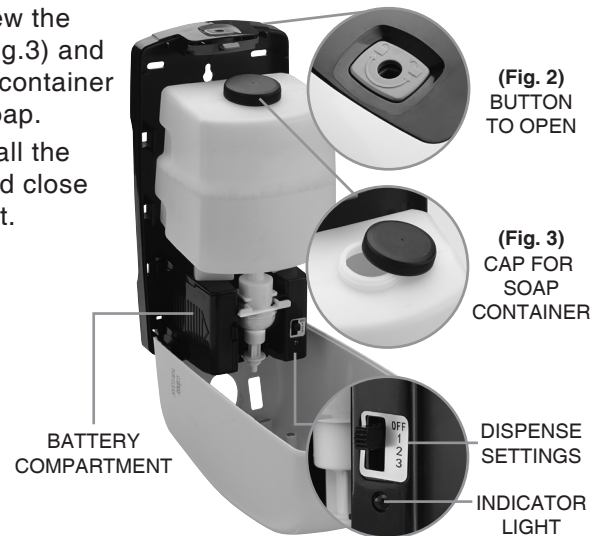


LIQUID / GEL

1. Open the unit by pressing the button located at the top-rear of the dispenser (Fig.2).

NOTE: the key will be required if unit was locked with the key (Fig. 1).

2. Unscrew the cap (Fig.3) and fill the container with soap.
3. Reinstall the cap and close the unit.



OPERATING THE DISPENSER

1. Load (6) alkaline AA batteries into battery compartment.
2. Select a dispense setting, then close cover:
1 = one drop | 2 = two drops | 3 = three drops

For public use, recommend to set to one drop.

INDICATOR LIGHT WILL BLINK WHEN BATTERIES NEED TO BE REPLACED.