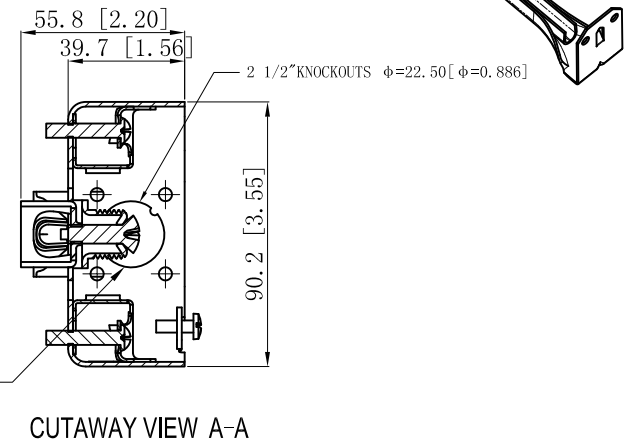
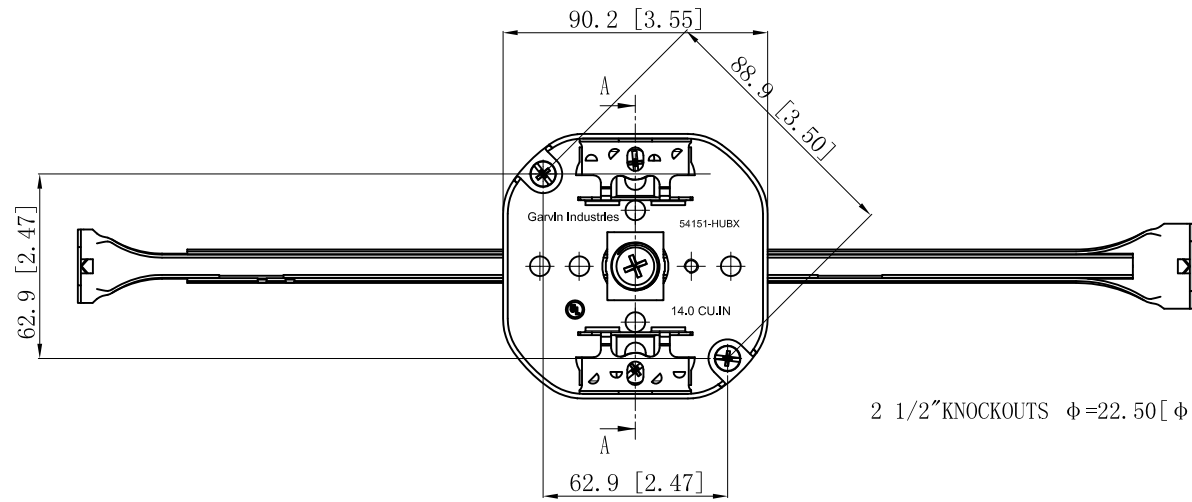
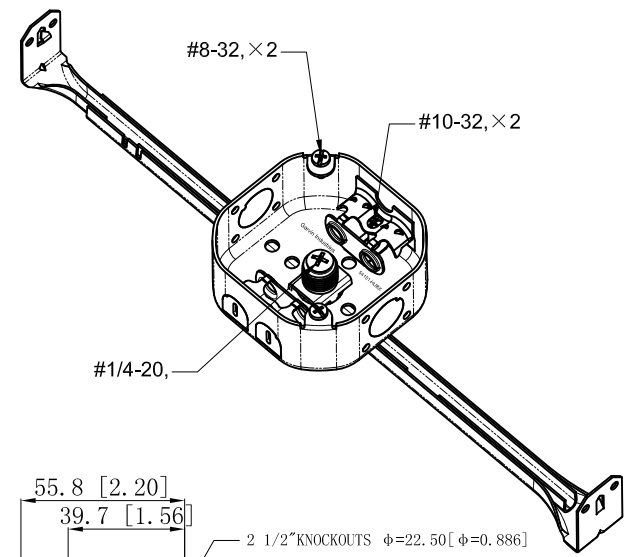
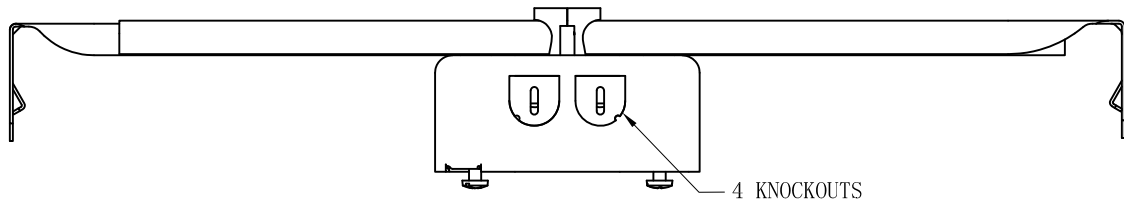


SIDES	BOTTOM
4 KNOCKOUTS	
2 1/2" KNOCKOUTS	
2 PCS 8-32x1/2 Screws Installed	
1 PCS #1/4-20x7/8 Screws Installed	
Material: Steel-0.0625"-G60 Galvanized	



This data sheet is for reference only. GARVIN INDUSTRIES reserves the right to make changes to the design without prior notice.

DESCRIPTION
TRADE REFERENCE TERMS

STANDARD PACKING	<h1 style="text-align: center;">GARVIN INDUSTRIES</h1>		
25 PCS			
TITLE	4" OCTBX, 1-1/2" D, BX/MC, ADJ BH		
SIZE	DWG NO.	REV	
A4	54151-HUBX	A	
DATA SHEET			
www.garvinindustries.com			