

FEATURES & SPECIFICATIONS

INTENDED USE — Static T8 fixtures provide general illumination for recessed applications; idea for restricted plenum spaces.

ATTRIBUTES — Designed exclusively for use with T8 lamps, electronic ballasts and sockets.

CONSTRUCTION — Smooth hemmed sides and smooth, inward formed end flanges for safe handling. Lighter weight fixture allows for safe, easy installation.

Standard steel door frame has superior structural integrity with premium extruded appearance and precision flush mitered corners. Powder painted, steel latches provide easy, secure door closure.

Superior mechanical light seal requires no foam gasketing. Integral T-bar clips secure fixture to T-bar system. Housing formed from cold-rolled steel. Acrylic shielding material 100% UV stabilized. No asbestos is used in this product.

FINISH — Five-stage iron-phosphate pretreatment ensures superior paint adhesion and rust resistance. Painted parts finished with high-gloss, baked white enamel.

OPTICAL — Broad range of lens options available.

ELECTRICAL — Standard ballast is electronic, thermally protected, resetting, Class P, HPF, non-PCB, UL Listed, CSA certified ballast, universal voltage and sound rated A.

Luminaire is suitable for damp locations. AWM, TFN or THHN wire used throughout, rated for required temperatures.

LISTING — Standard: UL. Optional: Canada — CSA or cUL.

WARRANTY — 1-year limited warranty. Complete warranty terms located at www.acuitybrands.com/CustomerResources/Terms_and_conditions.aspx

US patents: 6,210,025; 6,231,213; 2,288,471.

Note: Actual performance may differ as a result of end-user environment and application.

Specifications subject to change without notice.

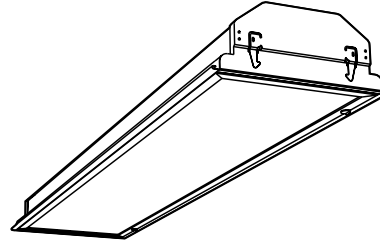
Catalog Number
Notes
Type

Static Troffer



GT8 1'x4'

1, 2 or 3 Lamps



Specifications

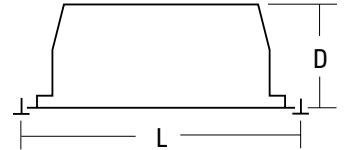
Length: 48 (121.8)

Width: 12 (30.5)

Depth: 4-1/2 (11.4)

Weight: 17 lbs (7.7 kg)

All dimensions are inches (centimeters).



ORDERING INFORMATION

For shortest lead times, configure products using **bolded options**.

Example: GT8 2 32 A12 MVOLT GEB10IS

Series	Trim type	Number of lamps	Lamp type	Door frame	Diffuser type	Voltage
GT8 1' wide	(blank) Grid F Overlapping flanged	1 2 3 Not included	32 32W T8 (48")	(blank) Flush steel, white FN Flush aluminum, natural FM Flush aluminum, matte black FW Flush aluminum, white RN Regressed aluminum, natural RW Regressed aluminum, white	A12 #12 pattern acrylic A12125 #12 pattern acrylic, .125" thick A19 #19 pattern acrylic, .156" thick A15 #15 pattern acrylic, .2" thick PC1S 1/2" x 1/2" x 1/2" plastic cube louver, silver PC2SF 1-1/2" x 1-1/2" x 1" plastic cube louver, silver w/ flange ¹	120 277 347 MVOLT² Others available

Options	
1/3 One 3-lamp ballast	PWS1836 6' prewire, 3/8" dia., 18-gauge, 1 circuit
GEB10IS Electronic ballast, <10% THD, instant start	LP835 3500 K
GEB10RS Electronic ballast, <10% THD, rapid start	LP841 4100 K
EL 500 nominal lumen battery pack (Noncompliant with CA T20)	PAF Painted after fabrication (white enamel)
EL14 1400 nominal lumen battery pack (Noncompliant with CA T20)	SSR Specular silver interior finish (95% reflective)
GLR Internal fast-blow fuse ³	CRE Flanged trim for continuous row mounting (end)
GMF Internal slow-blow fuse ³	CRM Flanged trim for continuous row mounting (middle)
LST Tandem-wired fixture pairs (shared ballasts)	JP Palletized and stretch-wrapped without individual cartons; grid trim only
	CSA CSA Certified

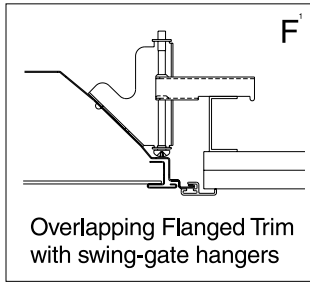
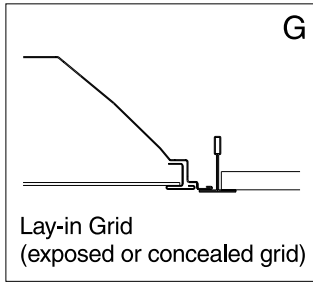
NOTES:

- Available with flush door frames only.
- MVOLT standard for 120-277V applications, 50-60hz operations require voltage specified.
- Must specify voltage 120 or 277.

GT8 1'x4' Static Troffer

MOUNTING DATA

Continuous row mounting of flanged units requires CRE and CRM trim options (see Options).

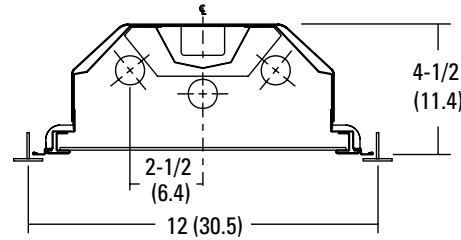
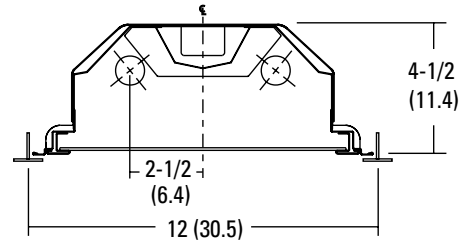


NOTE:

1 Recommended rough-in dimensions for F-trim fixtures 12"x48" (Tolerance is +1/4"-0"). Swing-gate range 1-9/16" to 3-3/4". Swing-gate span 10-3/4" to 14-3/4".

DIMENSIONS

All dimensions are inches (centimeters) unless otherwise indicated.



PHOTOMETRICS

Calculated using the zonal cavity method in accordance with IESNA LM41 procedure. Floor reflectances are 20%. Lamp configurations shown are typical. Full photometric data on these and other configurations available upon request.

GT8 2 32 A12

Report: **LTL12536**

LUMENS PER LAMP: **2850**

Luminaire Efficiency: **77.7%**

Coefficients of Utilization

RCR	pw	Coefficients of Utilization								
		80%			50%			30%		
		70%	50%	30%	50%	30%	10%	50%	30%	10%
0	92	92	92	86	86	86	83	83	83	
1	85	82	79	77	74	72	74	72	70	
2	78	72	67	68	64	61	66	63	60	
3	72	64	58	61	56	52	59	55	51	
4	66	58	51	55	50	45	53	48	45	
5	61	52	45	49	44	40	48	43	39	
6	57	47	40	45	39	35	44	39	35	
7	53	43	36	41	36	32	40	35	31	
8	49	39	33	38	32	28	37	32	28	
9	46	36	30	35	30	26	34	29	26	
10	43	33	28	32	27	24	32	27	23	

Zonal Lumen Summary

Zone	Lumens	% Lamp	% Fixture
0° - 30°	1471	25.8	33.2
0° - 40°	2347	41.2	53.0
0° - 60°	3777	66.3	85.3
0° - 90°	4426	77.7	100.0
90° - 180°	0	0.0	0.0
0° - 180°	4426	77.7	100.0