

Yale Smart Safe Installation Instructions

Pour la version française voir US.YaleHome.com/Support

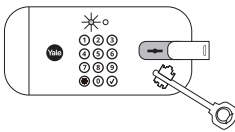
1 Download the Yale Access App

Create an account



Tip: If you already use the August App, use the same username and password.

2 Unlock Safe Using Key

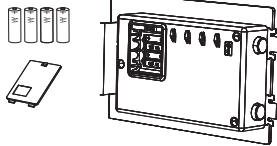


Open door and leave open until setup is complete.



Tip: When key is used to unlock, it must be used to lock.

3 Insert Batteries



Open the battery compartment and insert 4 AA batteries. Reinstall the cover.

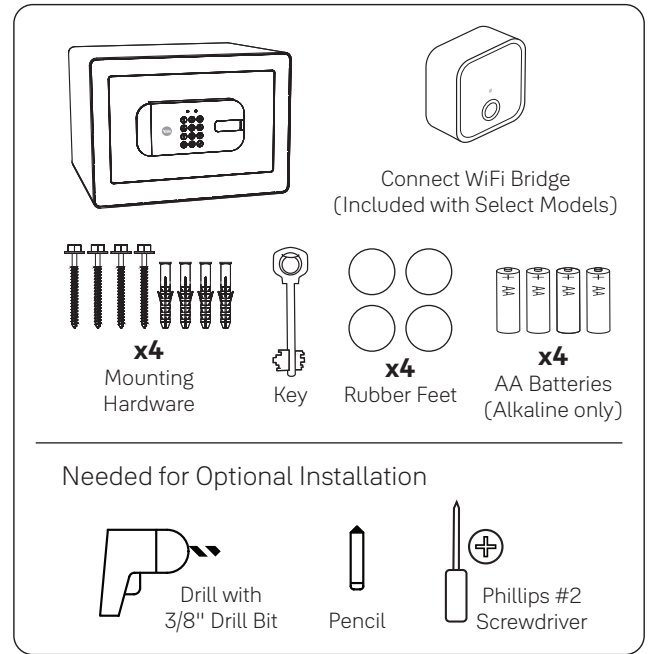
4 Add Safe to the Yale Access App

Set up Smart Safe

Tap "Set up a device" from the app menu. When asked, scan the Yale QR code on the inside of your safe door.



Tip: Once batteries are inserted, you have 5 minutes to complete this step. If your app doesn't find the safe, press and hold (5 secs) the reset button on the inside of the safe door.



Set up Connect*

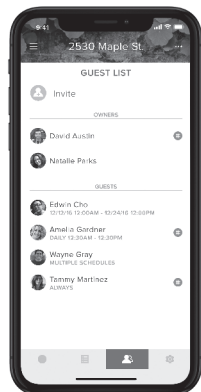
Note serial number located on back of Connect. Plug Connect into an INDOOR outlet within 10 feet of the Smart Safe.



Tip: For best connectivity, make sure that the Connect bridge is in the line of sight of the front of the safe.

*Connect WiFi Bridge included with select models

5 Create Entry Codes



Once added to the Yale Access App, you can create and delete entry codes or share app access by tapping the Guest icon in the bottom menu.

0

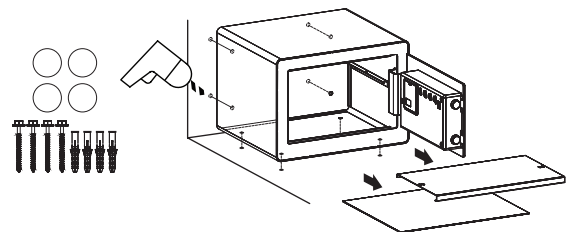
optional

Mount Safe For Added Security (Optional)

There are 8 mounting hole locations on the Smart Safe. Use included mounting template for guidance to secure the safe to the wall, shelf or floor.



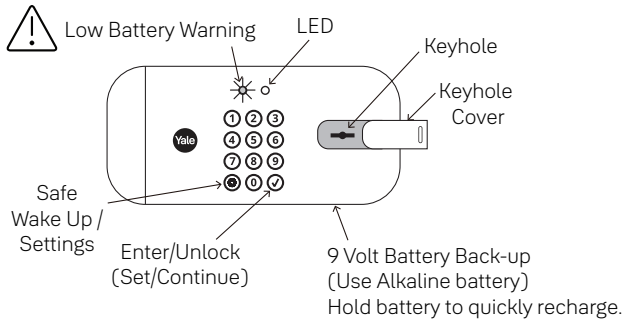
- Tips:
- Use Phillips #2 screwdriver to tighten screws.
 - To avoid scratching or damaging your floor, attach the included 4 rubber feet to the bottom of the safe with the 3M side against safe.



If you have any questions while installing, call our 24/7 tech support team! Call 1-855-213-5841 or email Support@YaleLock.com

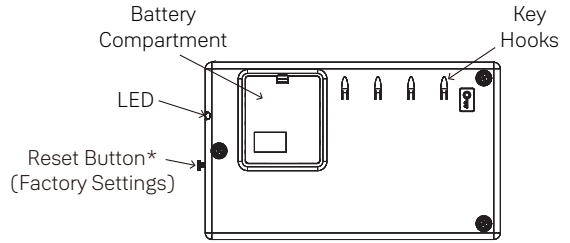
Using Your Smart Safe

Outside



Safe can always be opened with the key or with a 9V battery and valid code.

Inside



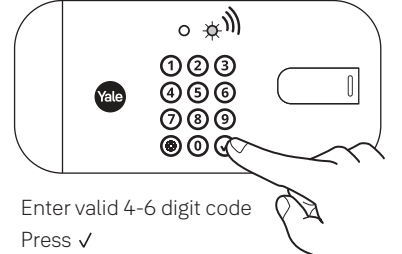
* When safe is paired to app, Factory Reset must be done from app. During a factory reset the safe will be unlocked.



Locking Safe



Unlocking Safe



Settings Definitions

Setting	Default	Definition
Vacation Mode	Off	While in Vacation Mode, the safe will not open even when a valid Entry Code is entered. This setting can be changed from the Yale Access App.
Inside Light	On This feature cannot be turned off.	The inside light will automatically turn on and stay on for 10 seconds when the safe door is opened.
One Touch Locking	On This setting cannot be turned off.	Touching any key on keypad will lock the safe.
Sound	On	The sound setting for entry code verification can be set from the Yale Access App.



Warning: Changes or modifications to this device, not expressly approved by Yale Home could void the user's authority to operate the equipment.

FCC:
Contain FCC ID: 2ABFG-IESD100PG0
Model: YRSF-MD-BLE-BLK
This equipment has been tested and found to comply with the limits for a Class B digital device, pursuant to Part 15 of the FCC Rules. These limits are designed to provide reasonable protection against harmful interference in a residential installation. This equipment generates, uses, and can radiate radio frequency energy and, if not installed and used in accordance with the instructions, may cause harmful interference to radio communications. However, there is no guarantee that interference will not occur in a particular installation. If this equipment does cause harmful interference to radio or television reception, which can be determined by turning the equipment off and on, the user is encouraged to try to correct the interference by one or more of the following measures:

- Reorient or relocate the receiving antenna.
- Increase the separation between the equipment and receiver.
- Connect the equipment into an outlet on a circuit different from that to which the receiver is connected.
- Consult the dealer or an experienced radio/TV technician for help.

THIS DEVICE COMPLIES WITH PART 15 OF THE FCC RULES. OPERATION IS SUBJECT TO THE FOLLOWING TWO CONDITIONS.
(1) THIS DEVICE MAY NOT CAUSE HARMFUL INTERFERENCE, AND
(2) THIS DEVICE MUST ACCEPT ANY INTERFERENCE RECEIVED, INCLUDING INTERFERENCE THAT MAY CAUSE UNDESIRE OPERATION.

Industry Canada:
Contain 11626A-IESD100PG0
Model: R-YRSF-MD-CB1-BLK
Section 7.1.2 of RSS-GEN Under Industry Canada regulations, this radio transmitter may only operate using an antenna of a type and maximum (or lesser) gain approved for the transmitter by Industry Canada. To reduce

potential radio interference to other users, the antenna type and its gain should be so chosen that the equivalent isotropically radiated power (e.i.r.p.) is not more than that necessary for successful communication.
En vertu des règlements d'Industrie Canada, cet émetteur radio ne peut fonctionner avec une antenne d'un type et un maximum (ou moins) approuvés pour gagner de l'émetteur par Industrie Canada. Pour réduire le risque d'interférence aux autres utilisateurs, le type d'antenne et son gain doivent être choisis de façon que la puissance isotrope rayonnée équivalente (PIRE) ne dépasse pas ce qui est nécessaire pour une communication réussie.

Section 7.1.3 or RSS-GEN This Device complies with Industry Canada License-exempt RSS standard(s). Operation is subject to the following two conditions: 1) this device may not cause interference, and 2) this device must accept any interference, including interference that may cause undesired operation of the device.

Cet appareil est conforme avec Industrie Canada RSS standard exemptes de licence(s). Son fonctionnement est soumis aux deux conditions suivantes: 1) ce dispositif ne peut causer des interférences, et 2) cet appareil doit accepter toute interférence, y compris les interférences qui peuvent causer un mauvais fonctionnement du dispositif.

This radio transmitter 6982A-YRHCPZWOFM has been approved by Industry Canada to operate with the antenna types listed below with the maximum permissible gain indicated. Antenna types not included in this list, having a gain greater than the maximum gain indicated for that type, are strictly prohibited for use with this device.

Le présent émetteur radio 6982A-YRHCPZWOFM a été approuvé par Industrie Canada pour fonctionner avec les types d'antenne énumérés ci-dessous et ayant un gain admissible maximal. Les types d'antenne non inclus dans cette liste, et dont le gain est supérieur au gain maximal indiqué, sont strictement interdits pour l'exploitation de l'émetteur.

CAN ICES-3B/NMB-3B

Yale Home

24/7 Support 1-855-213-5841 • US.YaleHome.com

Yale® is a registered trademark of Yale Home. Use of the Works with Apple badge means that an accessory has been designed to work specifically with the technology identified in the badge and has been certified by the developer to meet Apple performance standards. Apple is not responsible for the operation of this device or its compliance with safety and regulatory standards. Other products' brand names may be trademarks or registered trademarks of their respective owners and are mentioned for reference purposes only. © Copyright 2022. All rights reserved. Reproduction in whole or in part without the express written permission of Yale Home is prohibited.

Trusted every day

YRSF-MD-MNL-0020 Rev A

Part of ASSA ABLOY