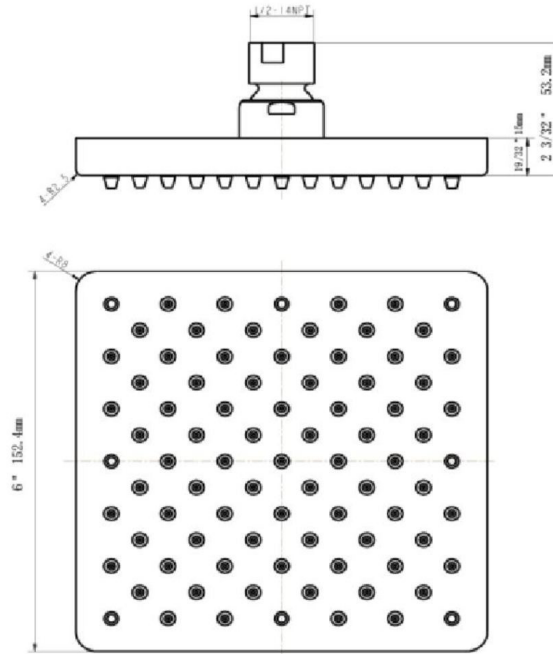
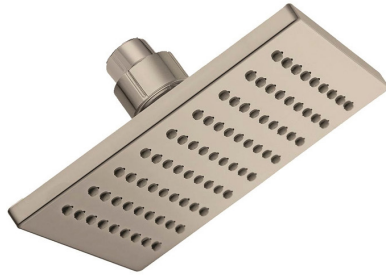


Karsen Shower Head

Satin Nickel



SPECIFICATIONS

| | | | |
|------------------------|-----------------------|------------------------------|------------|
| MATERIAL: | Plastic | WEIGHT: | 0.76 lbs. |
| HANDLE MATERIAL: | N/A | PVD FINISH: | No |
| SPOUT MATERIAL: | N/A | ESCUTCHEON INCLUDED: | No |
| CARTRIDGE MATERIAL: | N/A | VALVE INCLUDED: | No |
| WATERWAY MATERIAL: | N/A | PRESSURE BALANCED VALVE: | No |
| VALVE MATERIAL: | N/A | TYPE OF SHOWER HEAD: | Wall Mount |
| DRAIN MATERIAL: | N/A | SHOWER HEAD FUNCTIONS (QTY): | 1 |
| FAUCET TYPE: | Shower Trim | SHOWER HEAD NOZZLE TYPE: | N/A |
| SPOUT REACH: | N/A | SHOWER HEAD SHAPE: | Square |
| FLOW RATE: | N/A | SHOWER HEAD PUSH BUTTON: | N/A |
| LOW FLOW: | No | TUB SPOUT TYPE: | N/A |
| HANDLES CONFIGURATION: | N/A | TUB SPOUT DIVERTER INCLUDED: | No |
| HANDLE REACH: | N/A | | |
| QUICK ATTACH INCLUDED: | Yes | | |
| DIMENSIONS: | 1.93" H x 6" L x 6" D | | |

| | |
|-------------------------|-------------------------|
| WARRANTY: | 5-Year limited warranty |
| UPC CERTIFICATION NAME: | cUPC |
| ANSI CERTIFICATION: | NSF/ANSI 61 |
| WATERSENSE: | No |
| ASME: | No |
| AB-1953 LEAD FREE: | N/A |
| ADA COMPLIANT: | Yes |



| |
|-------------|
| TYPE: |
| JOB: |
| ORDER CODE: |
| APPROVALS: |