

Thank you for choosing Sunnydaze Decor. We stand behind our brand and the quality of the items we sell. Replacement parts or products will be sent at our discretion within the 1-year warranty period. Proof of purchase, with the date of purchase as well as photos of the merchandise defect, must be provided. Photos are used to determine the cause of defects and for future quality control. Register your warranty at <https://tiny.cc/SunnydazeWarranty>. If you have any questions, comments or concerns, feel free to contact us by phone at 833-982-1977, by email: customerservice@sunnydazedecor.com, or via our contact us page at <https://tiny.cc/SunnydazeContact>

SELF-WATERING RAISED GARDEN BED IEO-385

Read all assembly and care instructions carefully before using this product. Save this manual for future reference.
Assemble components on a soft, clean surface to avoid scratching or damaging the finish.



Inspect packaging to ensure all parts are accounted for before disposing of packing materials.

No.	PARTS		QTY.
A		Base Plate	2
B		Protective Cap	8
C		Sidewall	8
D		Drain Plug	8
E		Column	16
F		Self-Watering Grid	2
G		Cover Strip	8

! HELPFUL HINT

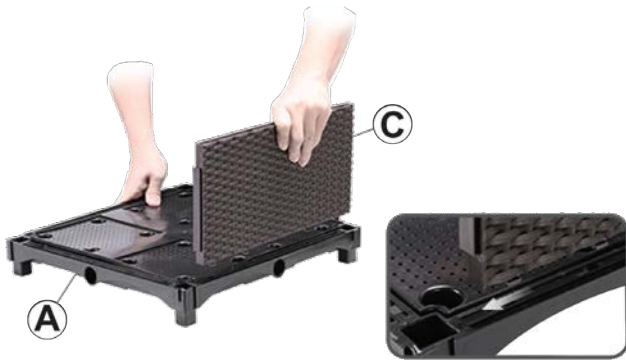
Before assembling the unit, review assembly options, read all use and care information, and determine the configuration that works best for your gardening needs.

ASSEMBLY -- INDIVIDUAL

Review all steps and understand assembly before beginning.

STEP 1

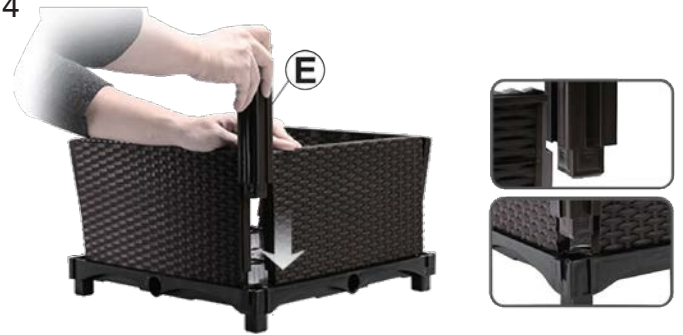
A: 1
C: 4



- Align the tabs on the bottom of Sidewall (C) with the grooves in Base Plate (A) and slide the sidewall to lock in place.
- Repeat until four sidewalls are installed onto the base plate.

STEP 2

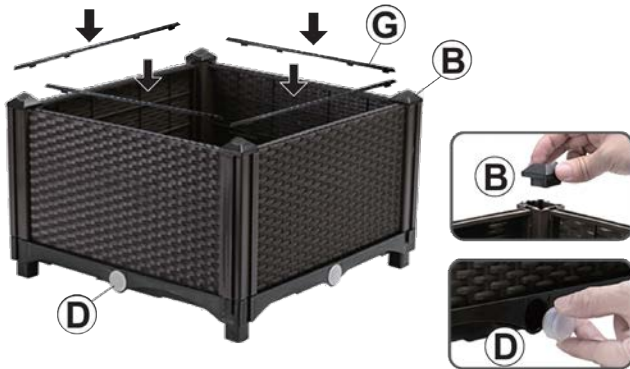
E: 4



- Align Column (E) with the sidewalls and slide the column down into the base plate, as shown.
- Repeat to connect the remaining columns.

STEP 3

B: 4
D: 4
G: 4



- Press one Cover Strip (G) into the top of each sidewall.
- Place one Protective Cap (B) onto each column.
- Insert one Drain Plug (D) into each side of the base plate, as shown.

STEP 4

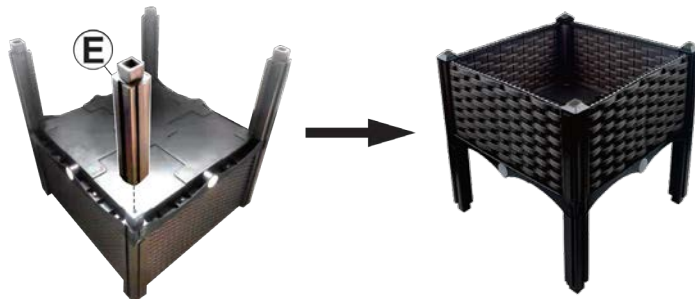
F: 1



- Install one Self-Watering Grid (F) into the assembled planter box.

STEP 5

E: 4

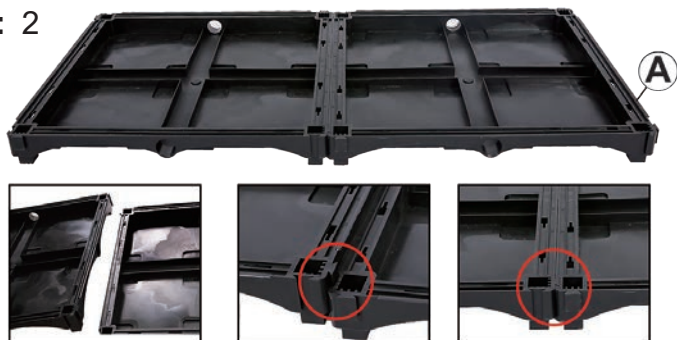


- Place four Columns (E) onto the bottom of the base plate, as shown.

ASSEMBLY -- DOUBLE

STEP 1

A: 2



- Interlock two Base Plates (A), as shown.

STEP 2

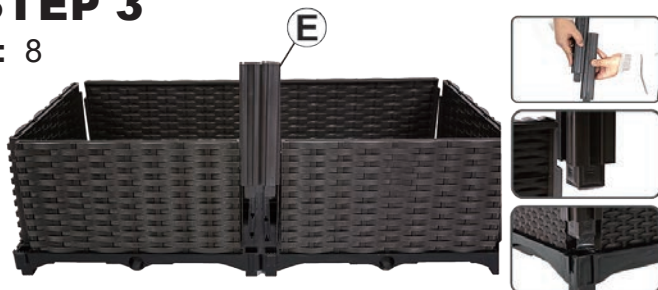
C: 6



- Align the tabs on the bottom of Sidewall (C) with the grooves in Base Plate (A) and slide the sidewall to lock in place.
- Repeat on all the outermost sides, as shown.

STEP 3

E: 8



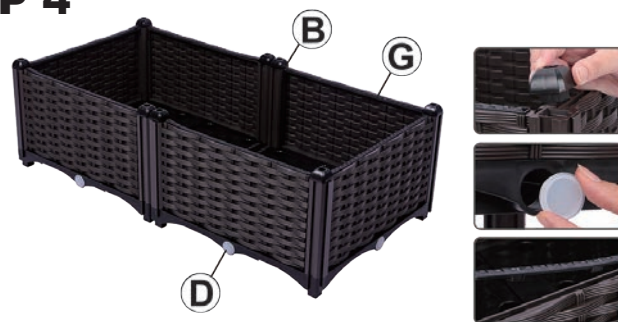
- Connect two Columns (E), as shown, for a total of two sets. Align the connected columns with the center-most sidewalls and slide them into the base plate.
- Install one individual column into each corner.

STEP 4

B: 8

D: 6

G: 6

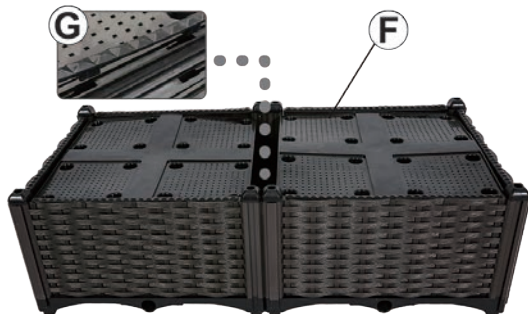


- Place one Protective Cap (B) onto each column.
- Press one Cover Strip (G) into the top of each sidewall.
- Insert one Drain Plug (D) into each drainage hole on the outsides of the base plates.

STEP 5

F: 2

G: 2



- Press one Cover Strip (G) into the center-most sections of the base plate, as shown.
- Install two Self-Watering Grids (F) onto the base plates.

STEP 6

E: 8



- Connect two Column (E) as shown. Attach the connected columns to the bottom side of the joined base plates.
- Install one individual column into each corner.

CONFIGURATION OPTIONS



GENERAL USE & CARE

Thank you for choosing Sunnydaze Decor for your next gardening adventure! We cannot foresee every possible scenario or climate in which this garden bed could be used. Information provided is a basic guide and may not be suited for your particular needs.

FOR OUTDOOR USE ONLY

This garden bed system is not guaranteed to be water-tight and may leak. Only use on a flat, level surface that cannot be damaged by runoff in the event the garden bed is over-watered, receives heavy rain, and/or the reservoir needs to be drained.

CHOOSE A LOCATION BEFORE FILLING THEM

Plan ahead! We highly recommend selecting a permanent location for the garden bed before each growing season. Moving the garden bed after it is filled with dirt could cause some components to disconnect.

Select a location that will provide optimal growing conditions (sun, shade, wind barriers, etc.) for your plants.

Lightweight potting soil is recommended for container gardening to ensure better drainage, higher nutrients, and even fertilizers in the mix.

SELECT SUITABLE PLANTS

The depth of the garden bed is suited for shallow-rooted plants such as, but not limited to, herbs, spinach, lettuce, cabbage, broccoli, cauliflower, onions, garlic, strawberries and many flowering annuals. Avoid plants that require deep soil. Read seed packets carefully and research the ideal soil depth required for your plants.

HOW THE SELF-WATERING FEATURE WORKS

Self-watering systems help provide more consistent soil moisture, help plants to absorb water and nutrition more completely, help protect plants from root rot and over-drying, as well as make it so you don't have to water as often.

Self-watering garden beds use sub-irrigation to help deliver water to the plant roots through a process known as capillary action. Essentially, the base plates act as a water reservoir, and the self-watering grids act as a barrier between the soil and the water. When there is excess water in the base plate, water particles slowly rise upwards through the grid and cling to the soil particles, all the way up to the soil line.

IMPORTANT: The garden bed does not water itself—regular watering is required! The self-watering feature is supplemental to normal gardening practices.

If you accidentally over-water the garden beds or heavy rains cause them to become waterlogged, pull out a drain plug to allow excess water to empty out of the base plate(s).

SAFETY STATEMENTS & WARNINGS

- Do not exceed the weight capacity of the garden bed.
- Do not stand on or in the garden beds.
- Keep garden beds a safe distance from heat sources such as fire pits, patio heaters, and grills.
- Do not allow children to use this product without adult supervision.
- Do not use harsh chemicals or abrasive materials to clean.

Any modification to the product or failure to follow recommended care will void the product warranty.

WARNING:

Manufacturer and seller expressly disclaim any and all liability from personal injury, property damage or loss, whether direct or indirect, or incidental, resulting from the incorrect attachment, improper use, inadequate maintenance, or neglect of this product.