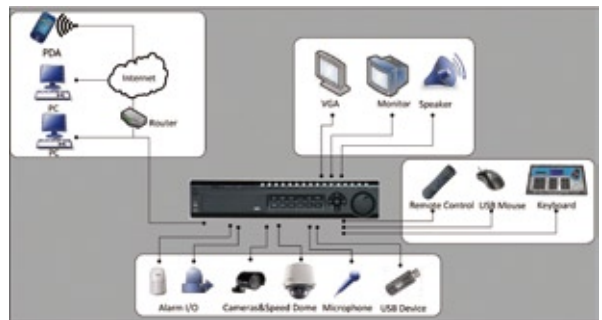


## DS-9104/9108/9116HDI-S Standalone DVR



### Key Features

- H.264 video compression
- 3 independent local video output (VGA, MAIN and AUX video/audio out)
- Up to 32 users
- Advanced motion detection
- Easy back-up to USB and CD/DVD-RW
- Support up to 8 SATA hard disk drives
- Support dual stream



### Specifications

		DS-9116HDI-S	DS-9108HDI-S	DS-9104HDI-S
Video/Audio input	Video compression	H.264		
	Video input	16-ch, BNC(1.0Vp-p, 75Ω), PAL/NTSC adaptive	8-ch, BNC(1.0Vp-p, 75Ω), PAL/NTSC adaptive	4-ch, BNC(1.0Vp-p, 75Ω), PAL/NTSC adaptive
	Audio compression	OggVorbis		
	Audio input	16-ch, BNC(2.0Vp-p, 1kΩ)	8-ch, BNC(2.0Vp-p, 1kΩ)	4-ch, BNC(2.0Vp-p, 1kΩ)
	Voice talk input	2-ch, BNC(2.0Vp-p, 1kΩ)	2-ch, BNC(2.0Vp-p, 1kΩ)	2-ch, BNC(2.0Vp-p, 1kΩ)
Video/Audio output	Preview resolution	PAL:704×576 NTSC:704×480		
	VGA output	1, resolution: 1024×768/60Hz, 1024×768/70Hz, 1280×1024/60Hz		
	Recording resolution	4CIF/2CIF/CIF/QCIF		
	Video output	2-ch, BNC(1.0Vp-p, 75Ω)		
	Frame rate	4CIF: 12fps (PAL) / 15fps (NTSC) 2CIF: 25fps (PAL) / 30fps (NTSC)		
	Video bit rate	32Kbps~2048Kbps, or user-defined (Max. 6144Kbps)		
	Audio output	2-ch, BNC(linear electrical level, 600Ω)		
	Audio bit rate	16kbps		
	Synchronous playback	16-ch	8-ch	4-ch
Hard disk driver	Interface type	8 SATA interface		
	Capacity	Each interface supports more than 2TB capacity		
External interface	Network interface	1, RJ45 10M/100M/1000M adaptive Ethernet interface		
	Serial interface	1 RS-232 interface (for parameters configuration, maintenance, transparent channel); 1 RS-485 interface (for PTZ control); 1 RS-485 keyboard interface (for special keyboard control)		
	USB interface	3, USB2.0		
	Alarm input	16-ch		
General	Alarm output	4-ch		
	Power supply	100~240VAC, 6.3A, 50~60Hz		
	Consumption	≤70W (without hard disk or DVD-R/W)		
	Working temperature	-10°C~+55°C(14°F~131°F)		
	Working humidity	10%~90%		
	Chassis	19" standard 2U chassis		
	Dimension	450(D)×450(W)×95mm(H)(17.72"(D)×17.72"(W)×3.74"(H))		
Weight(without HDD)	≤8000g (17.64lbs)			