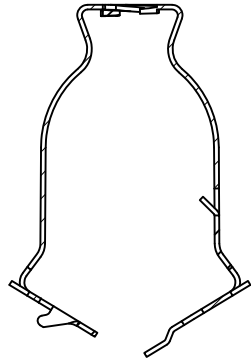
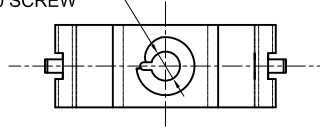


SIDES

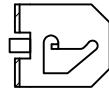
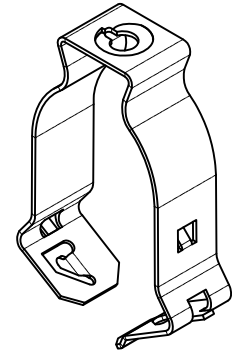
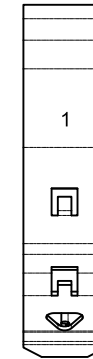
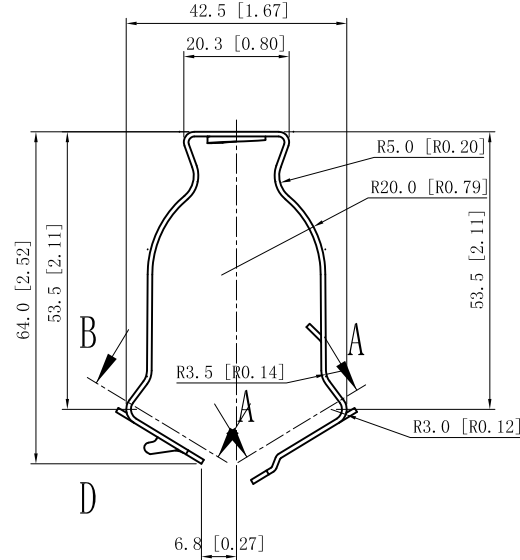
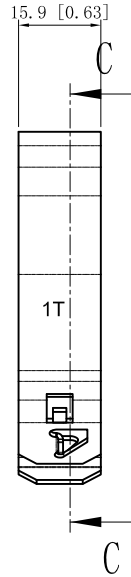
BOTTOM

Material: Steel-0.035"-C1065 spring steel, Black oxide

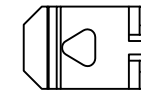
Ø5.6 [Ø0.22] HOLE
IT IS PUNCHING THREAD HOLE
FOR FITTING #1/4-20 SCREW



CUTAWAY VIEW C-C



CUTAWAY VIEW B-B



CUTAWAY VIEW A-A

DESCRIPTION
TRADE REFERENCE TERMS

This data sheet is for reference only .GARVIN INDUSTRIES reserves the right to make changes to the design without prior notice.

STANDARD PACKING	<h1 style="text-align: center;">GARVIN INDUSTRIES</h1> <h2 style="text-align: center;">COUDUIT HANGERS</h2>		
100 PCS			
TITLE	KC1T		REV
SIZE	DWG NO.	DATA SHEET	
A4			