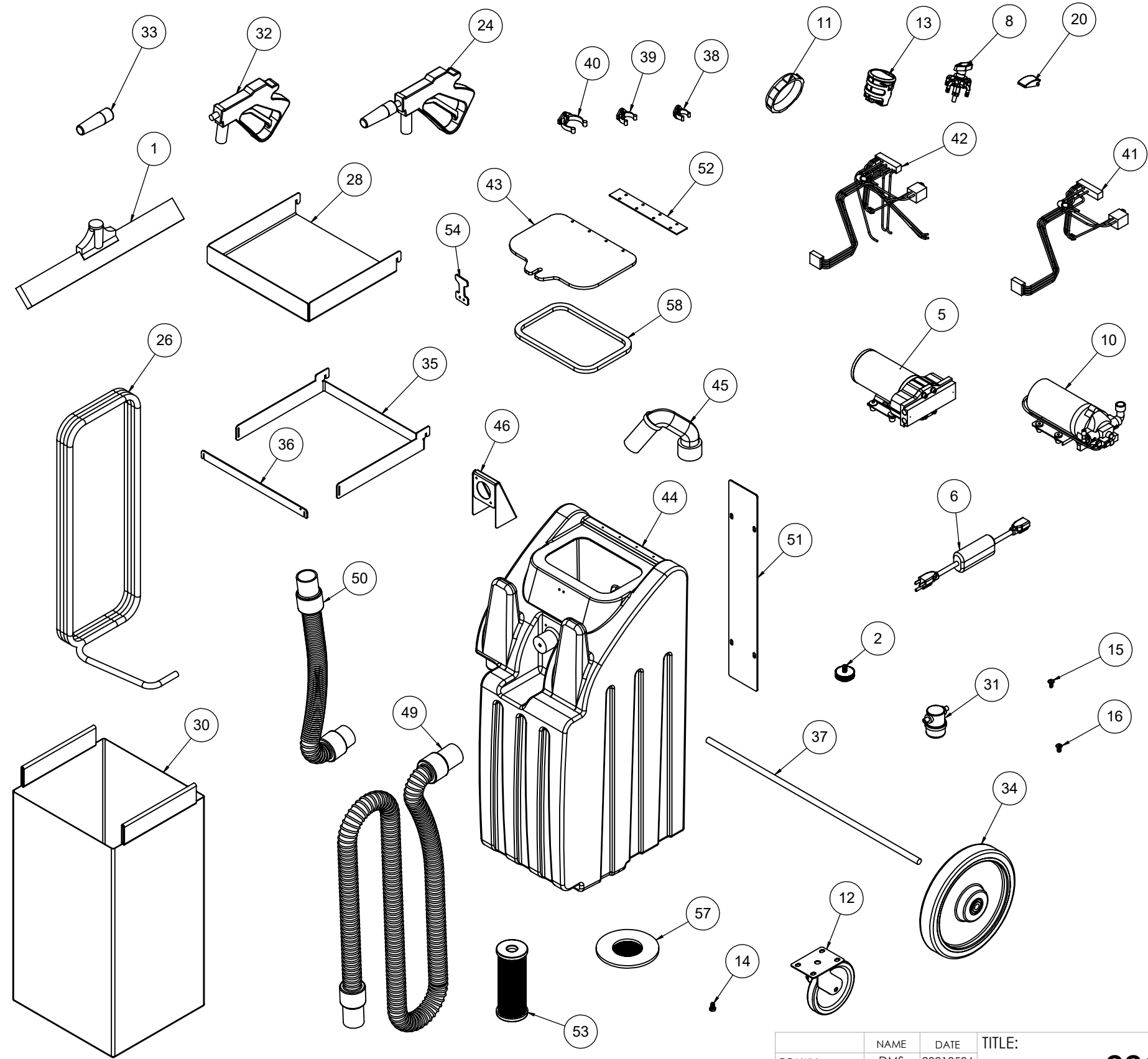


ITEM NO.	PART NO.	DESCRIPTION
1	HIL30340	Squeegee 18"
2	HIL30376	Cap Insert gap & gasket replacement kit (3-Pack)
3	HIL30384	Chemical Injector (image not shown)
4	HIL30390	Pump Unloader CC17HP/C3HP
5	HIL30391	CC17 HP Pump
6	HIL30394	GFCI Power Cord
7	HIL30376	Cap Insert and Gasket Replacement (3-pack)
8	HIL30550	Selector Valve Assembly
9	HIL30724	CC17 Recovery Vac Motor
10	HIL30740	CC17 XP Replacement Pump
11	HIL30757	Tank Cap 6"
12	HIL30762	Front Wheel Caster and Brake
13	HIL30764	Battery Charge Indicator Gauge
14	HIL30769	Flange Bolts for Casters, 1/4-20 x 1/2"
15	HIL30770	Phillips Screw 1/4-20 x 1/2"
16	HIL30771	Zinc Plated Phillips Screw, 1/4-20 x 1/2"
17	HIL30794	Valve Kit ShurFlo Pump
18	HIL30795	Heavy Duty Check Valve ShurFlo Pump
19	HIL30809	1/4" x 3/8" Tubing (sold by the foot)
20	HIL30829	Rocker Switch
21	HIL30830	1/2" Push Nut Plated
22	HIL30832	Check Valve 1/4"
23	HIL30844	Bottle Cap Assembly
24	HIL30865	Spray Gun Assembly CC17HP/C3HP
25	HIL30872	Pressure Switch ShurFlo Pump
26	HIL30900	Operator Hose
27	HIL30907	CC17 XP Replacement Battery
28	HIL30912	Common Shelf CC17
29	HIL30913	Drain Cap
30	HIL30914	Fabric Bag CC17
31	HIL30915	In Line Filter CC17
32	HIL30916	Spray Gun CC17XP/XPC
33	HIL30917	Gun Nozzle CC17XP/XPC
34	HIL30918	10" Rear Wheel CC17
35	HIL30919	Garbage Bag Bracket CC17
36	HIL30920	Garbage Bag Lock Bar CC17
37	HIL30921	Axle CC17
38	HIL30922	7/8" - 1-1/8" Accessory Clip CC17
39	HIL30923	1-1/8" - 1-3/8" Accessory Clip CC17
40	HIL30924	1-5/8" - 1-7/8" Accessory Clip CC17
41	HIL30925	Wiring Harness CC17XP
42	HIL30926	Wiring Harness CC17HP/XPC
43	HIL30927	Recovery Tank Lid
44	HIL30928	Recovery Tank
45	HIL30929	Float Assembly
46	HIL30930	Baffle
47	HIL30931	Recovery Hose 30-feet
48	HIL30932	Accessory Hang Panel
49	HIL30934	Vac Hose
50	HIL30935	Drain Hose
51	HIL30936	Cable Cover Panel
52	HIL30937	Lid Hinge
53	HIL30938	Vac Filter
54	HIL30939	Tank Lid Latch
55	HIL30944	Vac Motor Filter
56	HIL30945	Vac Motor Top Gasket
57	HIL30946	Vac Motor Screen and Gasket
58	HIL30947	Recovery Lid Gasket
59	HIL30948	CC17XP Charger



DRAWN	DMS	DATE	TITLE:		
CHECKED	WDean	20210506	CC17 REPLACEMENT PARTS		
PROPRIETARY AND CONFIDENTIAL					SIZE
THE INFORMATION CONTAINED IN THIS DRAWING IS THE SOLE PROPERTY OF HILLYARD INDUSTRIES. REPRODUCTION IN PART OR AS A WHOLE WITHOUT THE WRITTEN PERMISSION OF HILLYARD INDUSTRIES IS PROHIBITED.			B	HILLYARD INDUSTRIES	04
			SCALE: 1:50	DO NOT SCALE	SHEET 1 OF 1