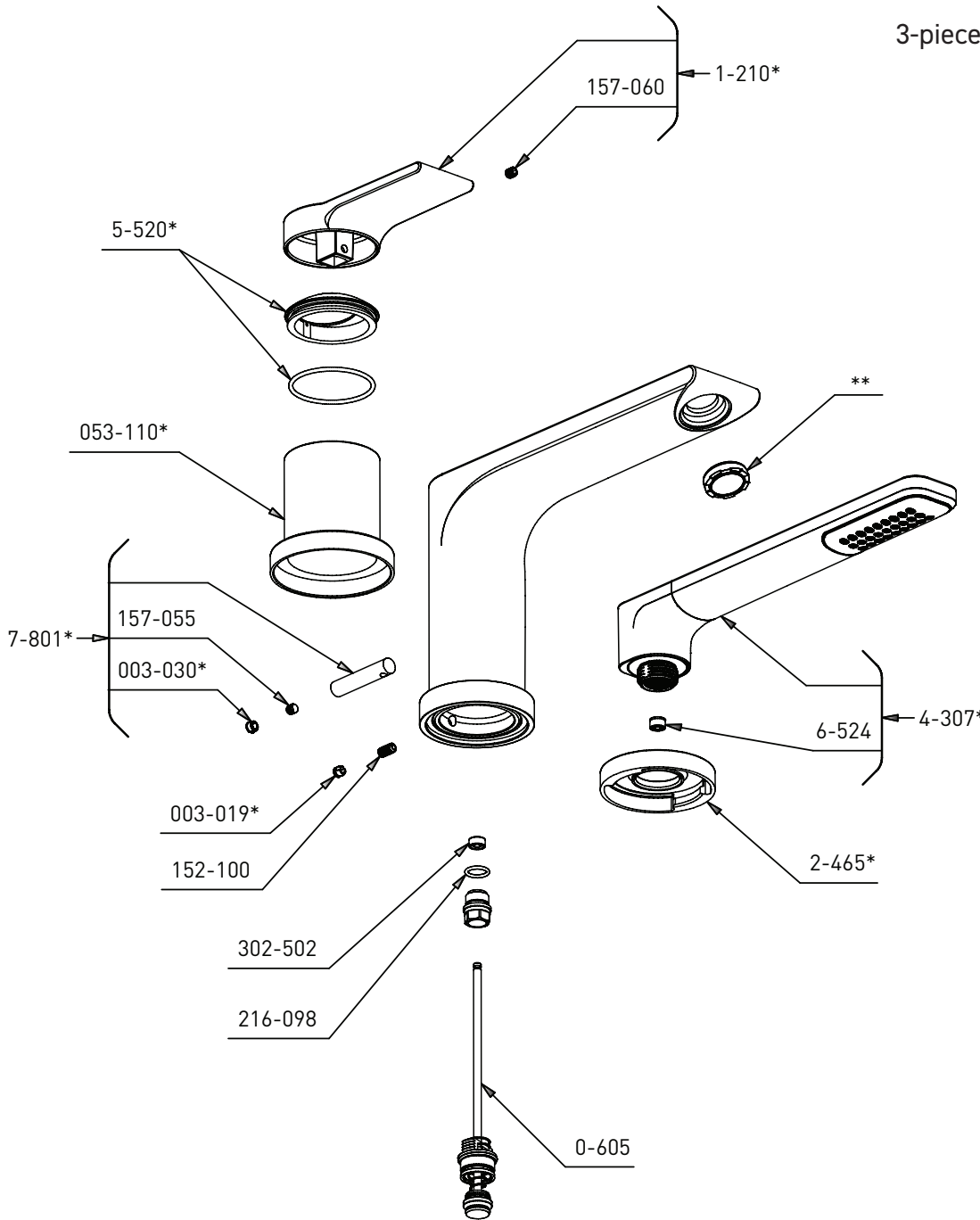


ORDER BY PART NUMBER

## ILLUSTRATED PARTS

### FRESK FR10

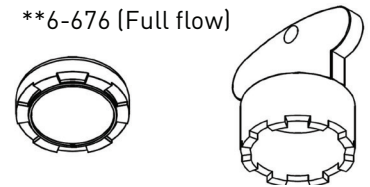
3-piece deck-mount tub filler with hand shower trim



**\*Finish Determined by Suffix**

Finish	Description
C	Chrome
BN	Brushed Nickel
BK	Black

\*\*6-676 (Full flow)



**TOOL:**

505-025 (Allen key 2.5mm)



500-002 (Plastic diverter rod tool)



For warranty or additional information, contact:

U.S.A.  
houseofrohl.ca/support  
1-800-777-9762

QUEBEC / MARITIMES / WESTERN CANADA  
houseofrohl.ca/support  
1-866-473-8442

ONTARIO  
houseofrohl.ca/support  
1-800-287-5354

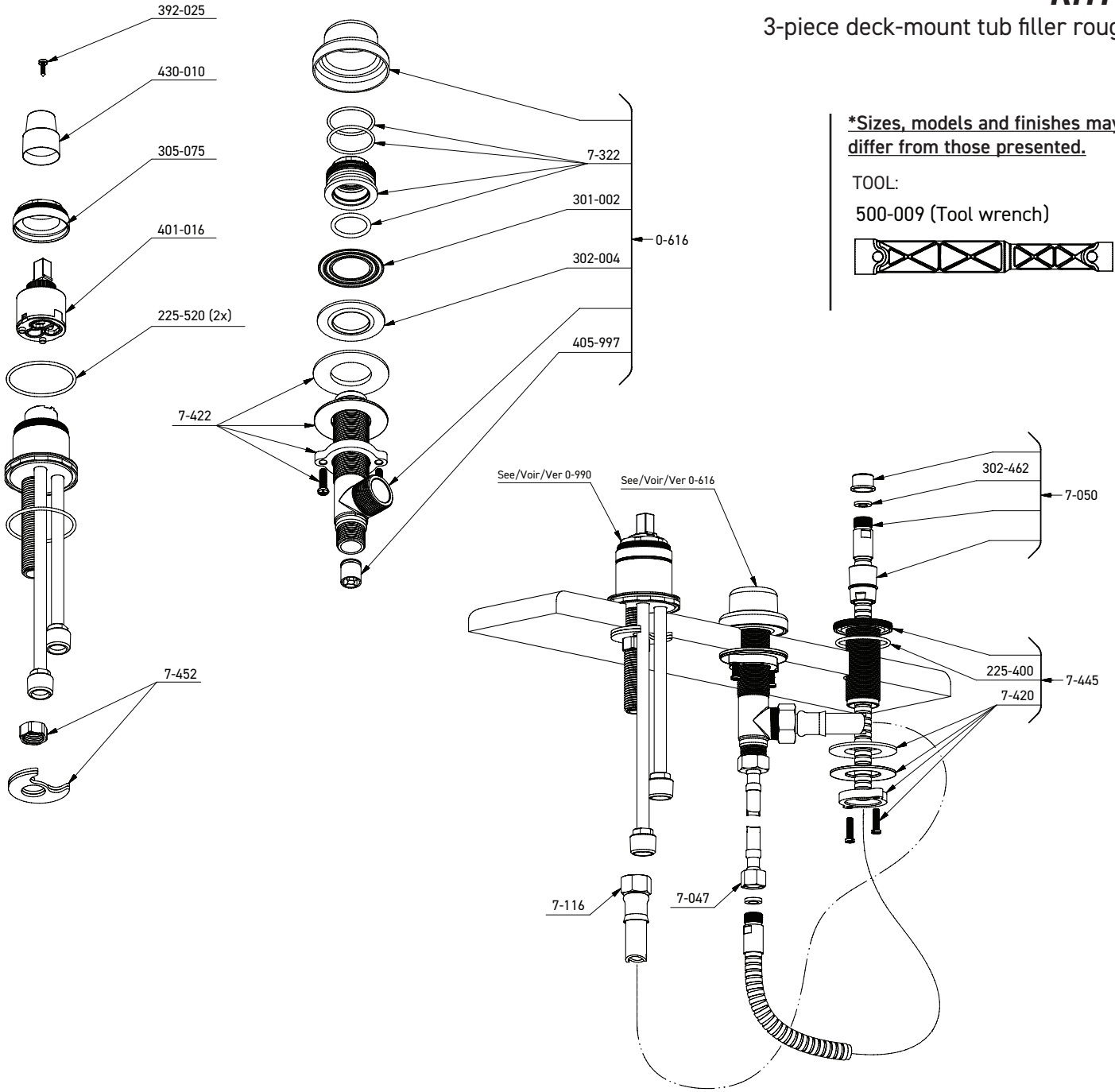
**ORDER BY PART NUMBER**

## ILLUSTRATED PARTS

0990 or/ou/o 0990-EX or/ou/o 0990-SPEX

### RHTB

3-piece deck-mount tub filler rough



**For warranty or additional information, contact:**

U.S.A.  
houseofrohl.ca/support  
1-800-777-9762

QUEBEC / MARITIMES / WESTERN CANADA  
houseofrohl.ca/support  
1-866-473-8442

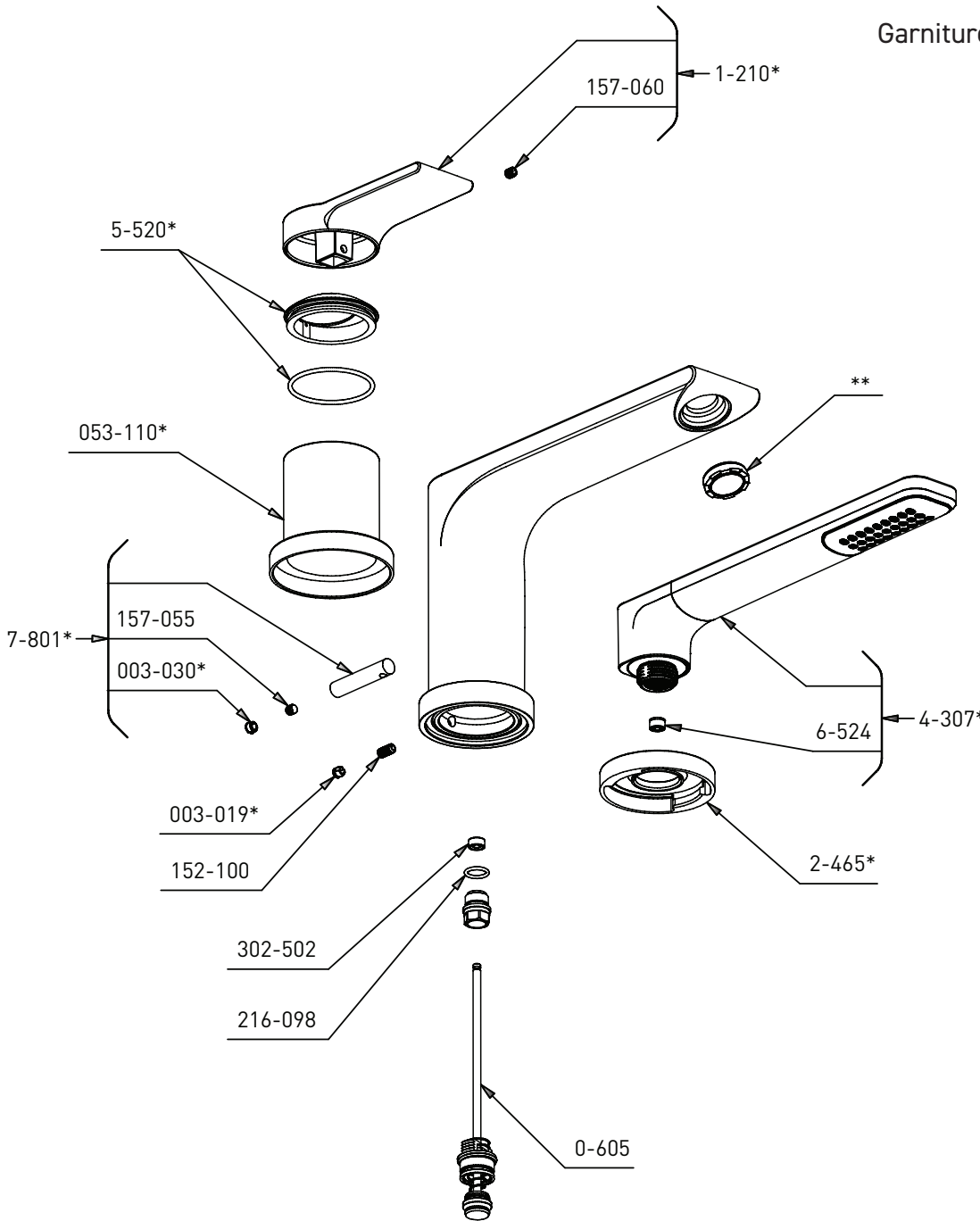
ONTARIO  
houseofrohl.ca/support  
1-800-287-5354

VEUILLEZ EFFECTUER VOTRE COMMANDE  
PAR NO DE RÉFÉRENCE

## ILLUSTRATIONS DES PIÈCES

### FRESK FR10

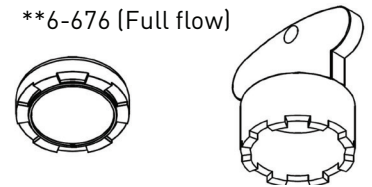
Garniture de robinet de bain 3 morceaux  
avec douchette



\*Fini déterminé en fonction du suffixe

Finition	Description
C	Chrome
BN	Nickel Brossé
BK	Noir

\*\*6-676 (Full flow)



OUTIL:

505-025 (Allen key 2.5mm)



500-002 (Plastic diverter rod tool)



Pour la garantie ou des informations supplémentaires, contactez:

U.S.A.  
houseofrohl.ca/support  
1-800-777-9762

QUÉBEC / MARITIMES / OUEST CANADIEN  
houseofrohl.ca/support  
1-866-473-8442

ONTARIO  
houseofrohl.ca/support  
1-800-287-5354

VEUILLEZ EFFECTUER VOTRE COMMANDE PAR NO DE RÉFÉRENCE

## ILLUSTRATIONS DES PIÈCES

0990 or/ou/o 0990-EX or/ou/o 0990-SPEX

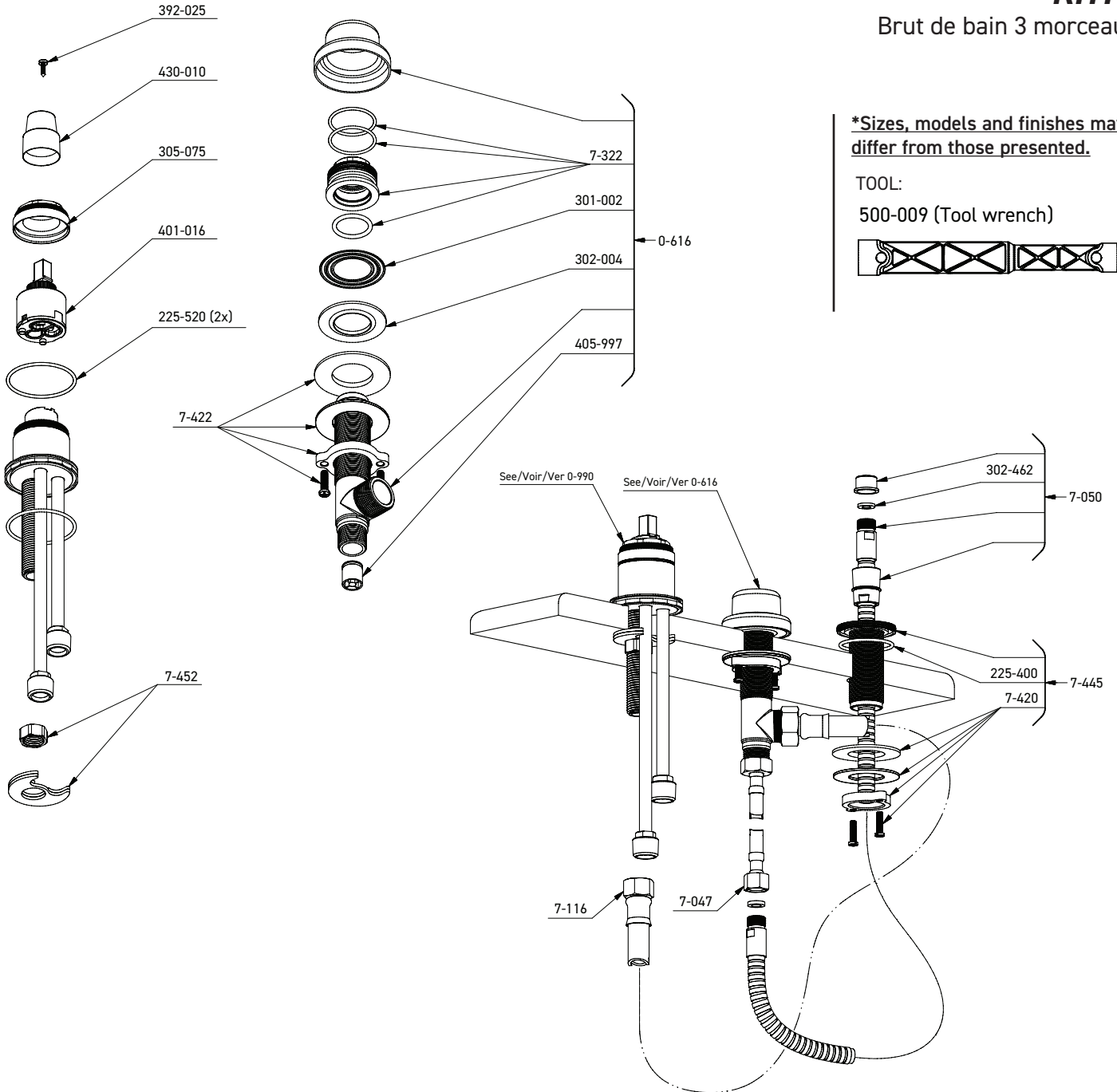
**RHTB**

Brut de bain 3 morceaux

**\*Sizes, models and finishes may differ from those presented.**

TOOL:

500-009 (Tool wrench)



Pour la garantie ou des informations supplémentaires, contactez:

U.S.A.  
houseofrohl.ca/support  
1-800-777-9762

QUÉBEC / MARITIMES / OUEST CANADIEN  
houseofrohl.ca/support  
1-866-473-8442

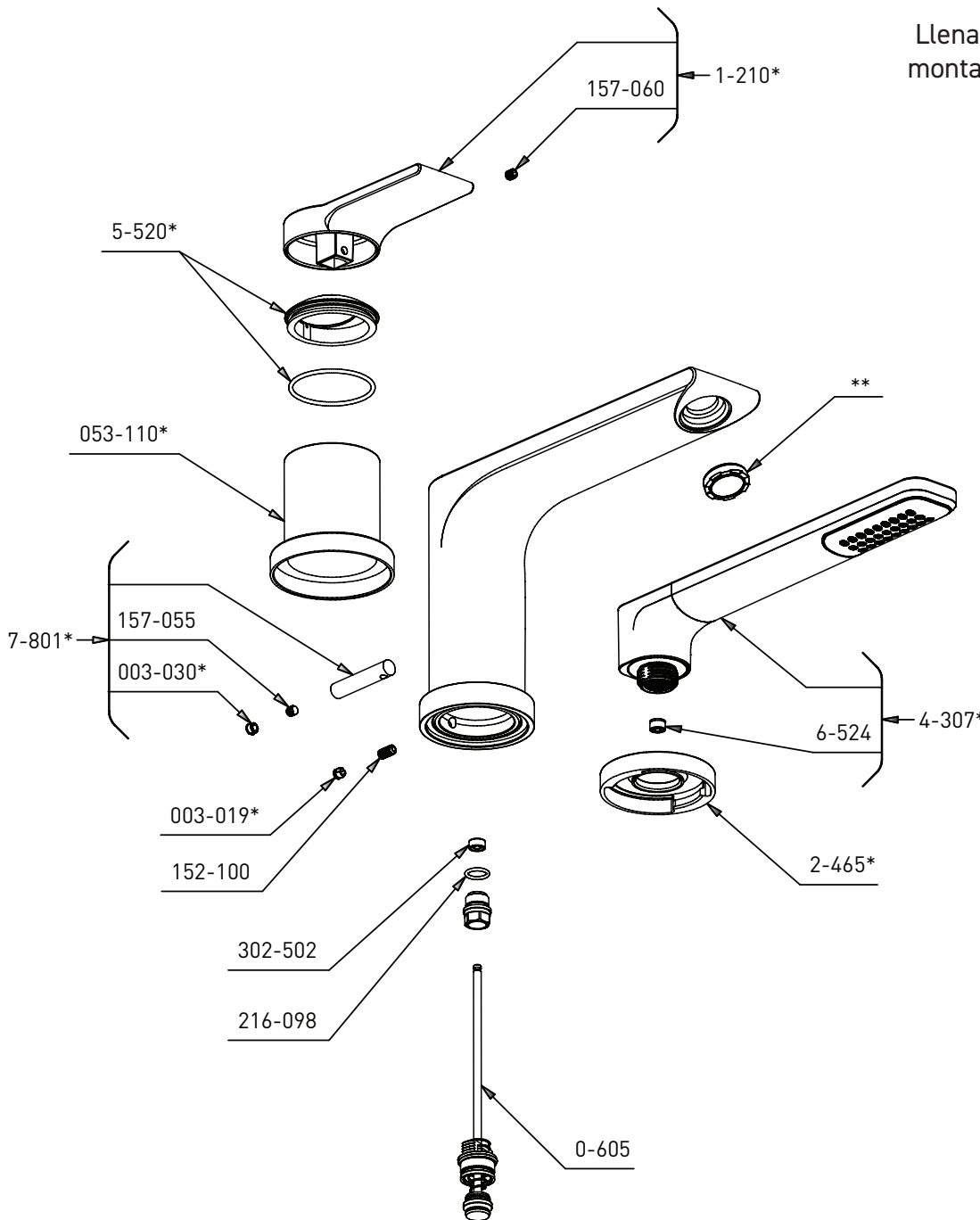
ONTARIO  
houseofrohl.ca/support  
1-800-287-5354

PEDIR POR NÚMERO DE REFERENCIA

## PIEZAS ILUSTRADAS

### FRESK FR10

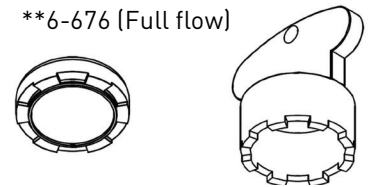
Llenadora de bañera de 3 piezas para montaje en cubierta con moldura para ducha de mano



\*Acabado determinado por Suffix

Acabado	Descripción
C	Cromado brillante
BN	Niquel cepillado
BK	Negro

\*\*6-676 (Full flow)

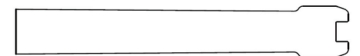


HERRAMIENTA:

505-025 (Allen key 2.5mm)



500-002 (Plastic diverter rod tool)



Para obtener información adicional o sobre la garantía, comuníquese con:

U.S.A.  
houseofrohl.ca/support  
1-800-777-9762

QUEBEC / MARITIMOS / CANADA OCCIDENTAL  
houseofrohl.ca/support  
1-866-473-8442

ONTARIO  
houseofrohl.ca/support  
1-800-287-5354

**PEDIR POR NÚMERO DE REFERENCIA**

0990 or/ou/o 0990-EX or/ou/o 0990-SPEX

## PIEZAS ILUSTRADAS

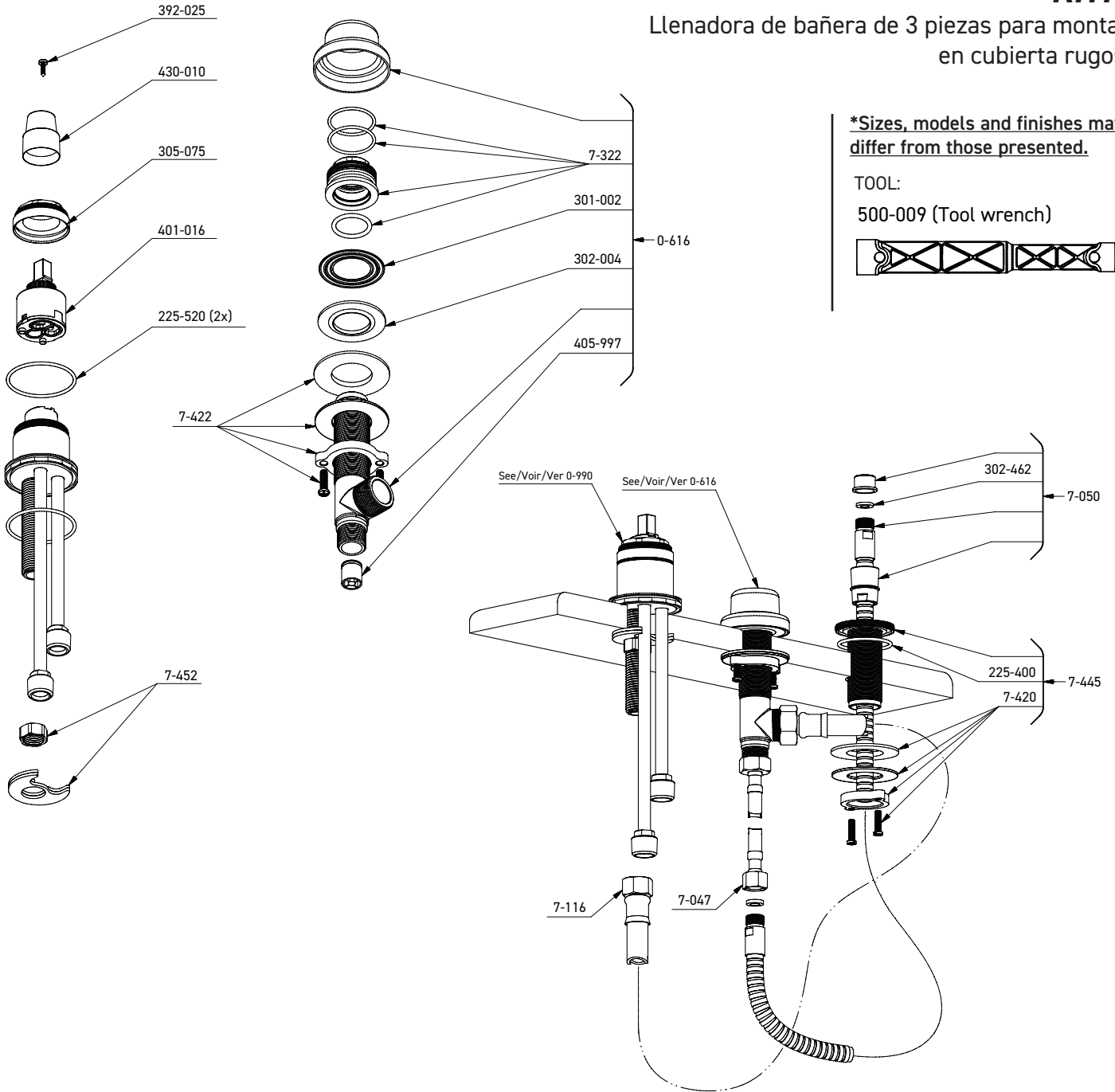
### RHTB

Llenadora de bañera de 3 piezas para montaje en cubierta rugosa

**\*Sizes, models and finishes may differ from those presented.**

TOOL:

500-009 (Tool wrench)



Para obtener información adicional o sobre la garantía, comuníquese con:

U.S.A.  
houseofrohl.ca/support  
1-800-777-9762

QUEBEC / MARITIMOS / CANADA OCCIDENTAL  
houseofrohl.ca/support  
1-866-473-8442

ONTARIO  
houseofrohl.ca/support  
1-800-287-5354