

# KINGSTON

KITCHEN & BATH

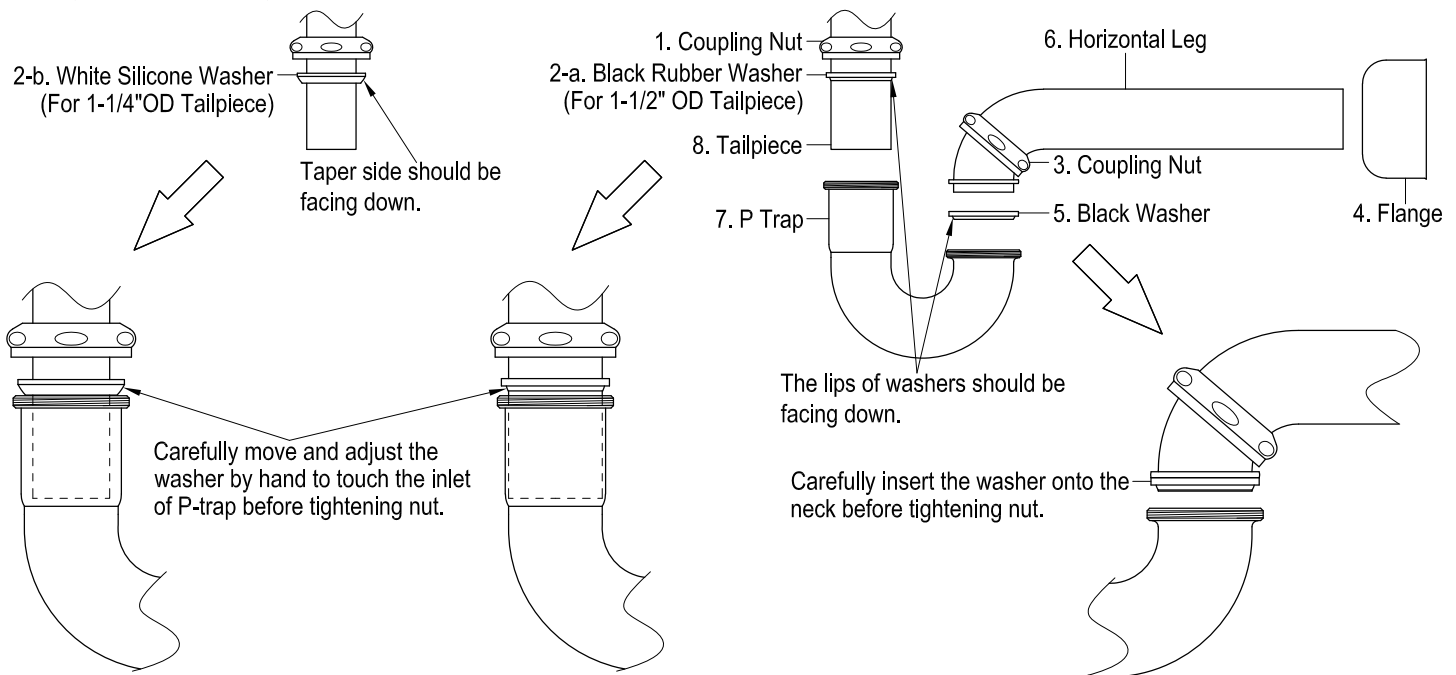
## INSTALLATION INSTRUCTIONS

### Decorative P-Trap

※ If the flange is not included in this set, you will need to purchase an additional flange (bell, hi box, or flat flange).

#### Instructions:

1. Insert horizontal leg (6) into wall drain stub-out.
2. Remove coupling nut (1), black rubber washer (2-a) and white silicone washer (2-b) from the P-trap (7).
3. For 1-1/2" OD tailpiece (1-1/2" drain), slide coupling nut (1) and black rubber washer (2-a) onto the drain tailpiece. Make sure the lip of rubber washer (2-a) is facing down.  
For 1-1/4" OD tailpiece (1-1/4" drain), slide coupling nut (1) and white silicone washer (2-b) onto the drain tailpiece. Make sure the taper side of silicone washer (2-b) is facing down.
4. Attach P-trap (7) to the tailpiece (8). Slowly and carefully move the black rubber washer (2-a) or white silicone washer (2-b) down to touch the inlet of P-trap (7) by hand. Then tighten up the coupling nut (1).
5. Align P-trap (7) with horizontal leg (6) and tailpiece (8), at this point it may be necessary to cut part of tailpiece (8) or part of horizontal leg (6) to obtain proper alignment.
6. Check if all components are properly tightened.
7. Run water. If leaks appears and tightening doesn't correct it, loosen coupling nuts (1) or (3), check black rubber washer (2-a) or white silicone washer (2-b) and black washer (5) are properly installed. Retighten coupling nuts (1) or (3).



### NOTICE

Failure to follow all directions may cause leaks which may result in water damage

[www.kingstonbrass.com](http://www.kingstonbrass.com)

TOLL-FREE CUSTOMER SERVICE: 1-877-2-KBRASS

TECHNICAL SUPPORT E-mail: [service@kingstonbrass.com](mailto:service@kingstonbrass.com)

12775 Reservoir Street, Chino, CA 91710