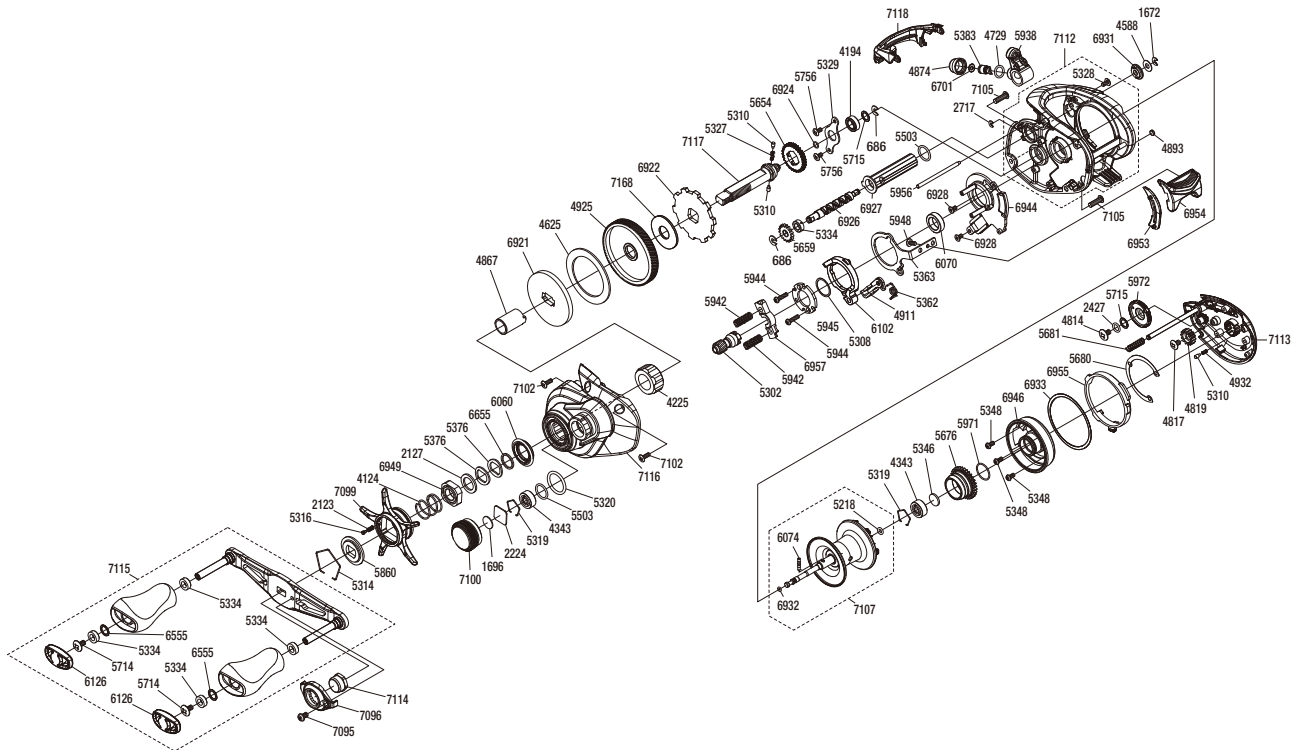


# SHIMANO

## TRAX

## TRX151HGA



(51RL533A31X)

#	Part No.	Description	#	Part No.	Description	#	Part No.	Description
686	105NK	E Lock	5329	109T1	Drive Shaft Retainer	6921	100BK	Key Washer
1672	105NC	E Lock	5334	10PXZ	Bushing	6922	100BJ	Anti-Reverse Ratchet
1696	10896	Cast Control Spacer B	5346	10EX5	Bearing Spacer	6924	108WU	O Ring
2123	10BT2	Click Spring	5348	10L1Q	Screw	6926	10S8K	Worm Shaft
2127	10J1N	Star Drag Spacer	5362	10TMC	Clutch Pawl Spring	6927	10T3X	Level Wind Guard
2224	1085F	Cast Control Spacer A	5363	10TME	Clutch Plate	6928	100S4	Screw
2427	108WS	O Ring	5376	109F5	Washer	6931	100G7	Level Wind Guard Bushing
2717	105NB	E Lock	5383	10BHQ	Line Guide Pawl	6932	100BH	O Ring
4124	10A70	Star Drag Spring	5503	101GT	O Ring	6933	101UN	Washer
4194	105BP	Ball Bearing	5654	101K8	Idle Gear A	6944	10R5C	Clutch Guard Assembly
4225	10F3C	Roller Clutch Bearing	5659	10SRL	Idle Gear C	6946	10S8N	Brake Case
4343	105C3	Ball Bearing	5676	101DR	Brake Ring Gear	6949	10A3U	Star Drag Nut
4588	10FJZ	Washer	5680	10SSN	Washer	6953	10DRX	Clutch Bar Guide B
4625	106XT	Drag Washer C	5681	10KNH	Spring	6954	10SBC	Clutch Button
4729	108WQ	O Ring	5714	10LFA	Screw	6955	10DRY	Rught Side Plate Cam Lever
4814	103LE	Screw	5715	10G6D	Washer	6957	1001Q	Yoke
4817	103L7	Screw	5756	10S3Y	Screw	7095	10LHR	Screw
4819	10CLF	Idle Gear	5860	10J26	Star Drag Click Plate	7096	10SJ1	Handle Nut Plate
4867	10CCN	Roller Clutch Inner Tube	5938	10DUG	Line Guide Assembly	7099	10SUQ	Star Drag
4874	10FJB	Pawl Cap	5942	100U9	Yoke Spring	7100	1001M	Cast Control Cap
4893	108PY	Washer	5944	10LV0	Screw	7102	10MPT	Screw
4911	10MQM	Clutch Pawl Assembly	5945	100US	Clutch Cam Retainer	7105	10DQW	Screw
4925	10CME	Drive Gear	5948	10LF4	Screw	7107	10TE4	Spool Assembly
4932	10GQZ	Click Spring	5956	100UT	Stabilizer Bar	7112	100T4	Frame Assembly
5218	10EZ7	O Ring	5971	100GW	O Ring	7113	10TE1	Right Side Plate Assembly
5302	10CSD	Pinion Gear	5972	10263	Brake Dial	7114	10RYS	Handle Nut
5308	10190	Washer	6060	10DRE	Roller Clutch Water Proof	7115	10E6P	Handle Assembly
5310	10HJG	Idle Gear Pin	6070	10DRK	Pinion Gear Bushing	7116	10E6Q	Left Side Plate
5314	10KXW	Click Plate Retainer	6074	10P68	Spool Clutch Pin	7117	10E6R	Drive Shaft
5316	10MFC	Click Pin	6102	100W0	Clutch Cam	7118	10E6N	Level Wind Protector
5319	1054D	Bearing Retainer	6126	100NC	Handle Knob Seal	7168	109BN	Drag Washer A
5320	10R22	O Ring	6555	104FH	Washer			
5327	10JDY	Idle Gear Spring	6655	100SE	Washer			
5328	10LCQ	Screw	6701	10CFU	Spacer			

Please note that the number of adjusting washers may not be the same as shown in the exploded views.  
(Adjustment will vary with each individual product.)

(230731)\_003