

QUICK INSTALLATION GUIDE

Remote Management Card

RMCARD302

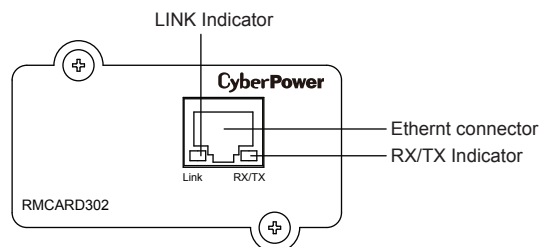
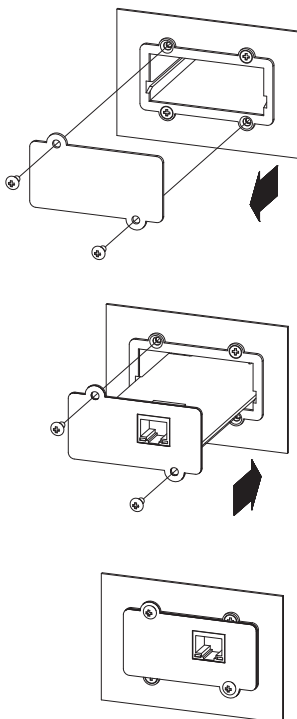
Intelligent Remote Management Card allows a UPS system to be managed, monitored, and configured

K09-0000057-02

INSTALLATION GUIDE

Step 1. Hardware Installation

1. Turn off the UPS before removing the expansion port cover on the UPS.
2. Remove the two retaining screws of the expansion port cover then remove the cover.
3. Install the CyberPower Remote Management Card into the expansion port.
4. Re-install and tighten the retaining screws.
5. Connect the Ethernet cable to the LAN port of the CyberPower Remote Management Card.
6. Turn on the UPS.



Definitions for LED Indicators

Link LED color	Condition
Off	The Remote Management Card is not connected to the Network or the Remote Management Card power is OFF
On(Yellow)	The Remote Management Card is connected to the Network
TX/RX LED color	
Off	The Remote Management Card power is OFF
On(Green)	The Remote Management Card power is ON
Flash	- Receiving/transmitting data packet - Reset finished

Step 2. Configure the IP address for the CyberPower Remote Management Card.

Method 1: Using the Power Device Network Utility Tool

1. Install the Power Device Network Utility Tool from the included CD. It is located on the CD in the \tools\network folder. Double click the "Power Device Network Utility" installation file, "Setup.msi" to begin the installation.
2. After installation is completed, run the "Power Device Network Utility" program. (Under "All Programs", select "CyberPower Power Device Network Utility").
3. The main dialog of the Power Device Network Utility Tool program is shown in Figure 1. The tool will display all Remote Management Cards present on the network. The "Refresh" button is used to search the entire local network again.

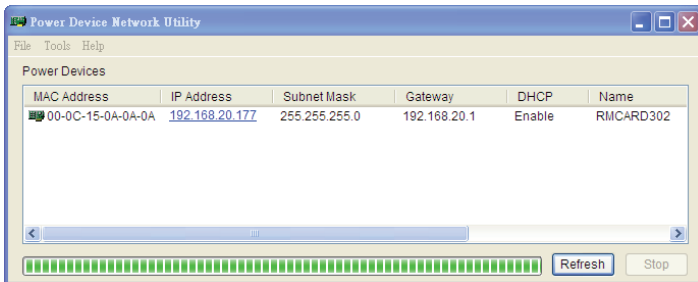


Figure 1. The main window of the "Power Device Network Utility" program.

4. Select the Remote Management Card you are setting up. Click on the Tools menu and select "Device Setup" or double click the Remote Management Card you want to configure.

5. You can modify the IP Address, Subnet Mask, and Gateway address for the Device MAC Address listed in the Device Network Settings window, as shown in figure 2. The default IP Address is 192.168.20.177 and the default Subnet Mask is 255.255.255.0.

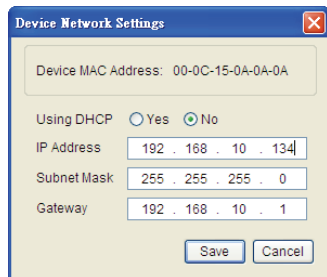


Figure 2. The Device Network setting window.

6. Modify the IP, subnet mask or gateway address. Enter the new addresses into the corresponding fields.
7. You will need to enter a User Name and Password for the Remote Management Card in the authentication window, as shown in figure 3.
*Default user name: **cyber**;
Default password: **cyber**.
8. If IP address is successfully, you will see a message that the IP set up is OK, as shown in figure 4.

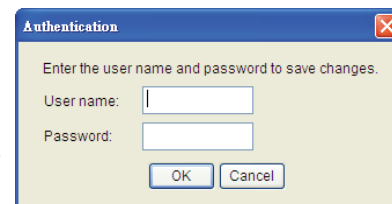


Figure 3. Authentication window.

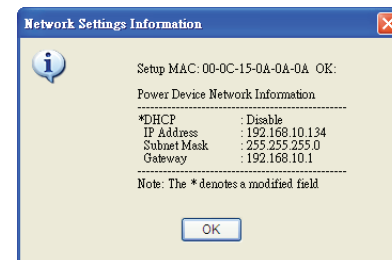


Figure 4. Setup IP Address successfully message.

Method 2: Using a command prompt

1. Obtain the MAC address from the label on the Remote Management Card. Each Management Card has a unique MAC address.
2. Use the ARP command to set the IP address.
Example:
To assign the IP Address 192.168.10.134 for the Remote Management Card, which has a MAC address of 00-0C-15-0A-0A-0A you will type in the following command prompt from a PC connected to the same network as the Remote Management Card.
(1) Type in "arp-s 192.168.10.134 00-0C-15-0A-0A-0A" then press **Enter**.
3. Use the Ping command to assign a size of 123 bytes to the IP.
(1) Type in "ping 192.168.10.134 -l 123" then press **Enter**
(2) If the replies are received, your computer can communicate with the IP address.

WEB INTERFACE Login Account

There are two user account types.

- Administrator (default username: **cyber**; default password: **cyber**)
- Viewer (default username: **device**; default password: **cyber**)

The administrator can access full functions, including enable/disable the Viewer account, and the viewer can access the read function but can not control or change any setting.

Trouble Shooting

Problem	Solution
Unable to configure the Remote Management Card by method 1 or method 2	1. Check the LED status , the normal condition is both yellow and green led are on. If green led is off : ► Check if the Remote Management Card is properly seated in the UPS and the UPS power is on. If yellow led is off : ► Check if the network connection is valid. 2. Check if the operated PC is on the same physical network as Remote Management Card is.
Unable to ping the Remote Management Card	1. Use method1 and method2 to get correct IP address of the Remote Management Card. 2. If the operated PC is on the different physical network from the Remote Management Card, verify the setting of subnet mask and the IP address of gateway.
Lost the user name and password	Please refer to the " Reset to Default Setting / Recover from a Lost Password " part in the user's manual.

Conformance Approvals FCC Warning

This equipment has been tested and found to comply with the limits for a Class A Digital Device, pursuant to Part 15 of the FCC Rules. These limits are designed to provide reasonable protection against harmful interference in residential installation. This equipment generates, uses and can radiate radio frequency energy and, if not installed and used in accordance with the instructions, may cause harmful interference to radio communications. Operation of this equipment in a residential area is likely to cause harmful interference in which case the user will be required to correct the interference at his own expense.

Any special accessories needed for compliance must be specified in the instruction.

This device complies with part 15 of the FCC Rules. Operation is subject to the following two conditions: (1) This device may not cause harmful interference, and (2) this device must accept any interference received, including interference that may cause undesired operation.

Te Class A digital apparatus meets all requirements of the Canadian Interference-Causing Equipment Regulation.
Cet appareil numerique de la class A respecte toutes les exigences du Reglement sur le materiel brouilleur du Canada.

CyberPower North America

CyberPower Systems (USA), Inc.
Phone: (952)-403-9500 Toll-free: (877)297-6937
4241 12th Avenue E. Suite 400, Shakopee, MN 55379
E-mail: tech@cpsww.com
Website: www.CPSww.com

CyberPower International

CyberPower Systems, Inc.
Website: www.cpsww.com