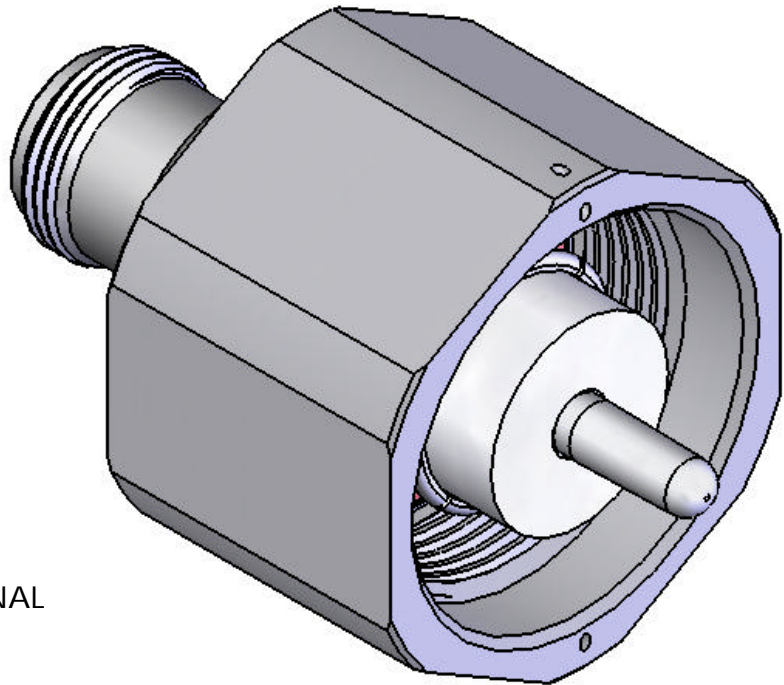


This document, including the design, configuration and mechanical features revealed herein are the sole, confidential and proprietary property of TRU Corporation. Reproduction or use thereof, in whole or part, is prohibited without the prior written consent of TRU Corporation.

REV.	DESCRIPTION	DATE	APPROVED
-	ORIGINAL ISSUE	8/10/07	RMK



ENGINEERING DATA:

ELECTRICAL:
IMPEDANCE: 50 OHMS NOMINAL

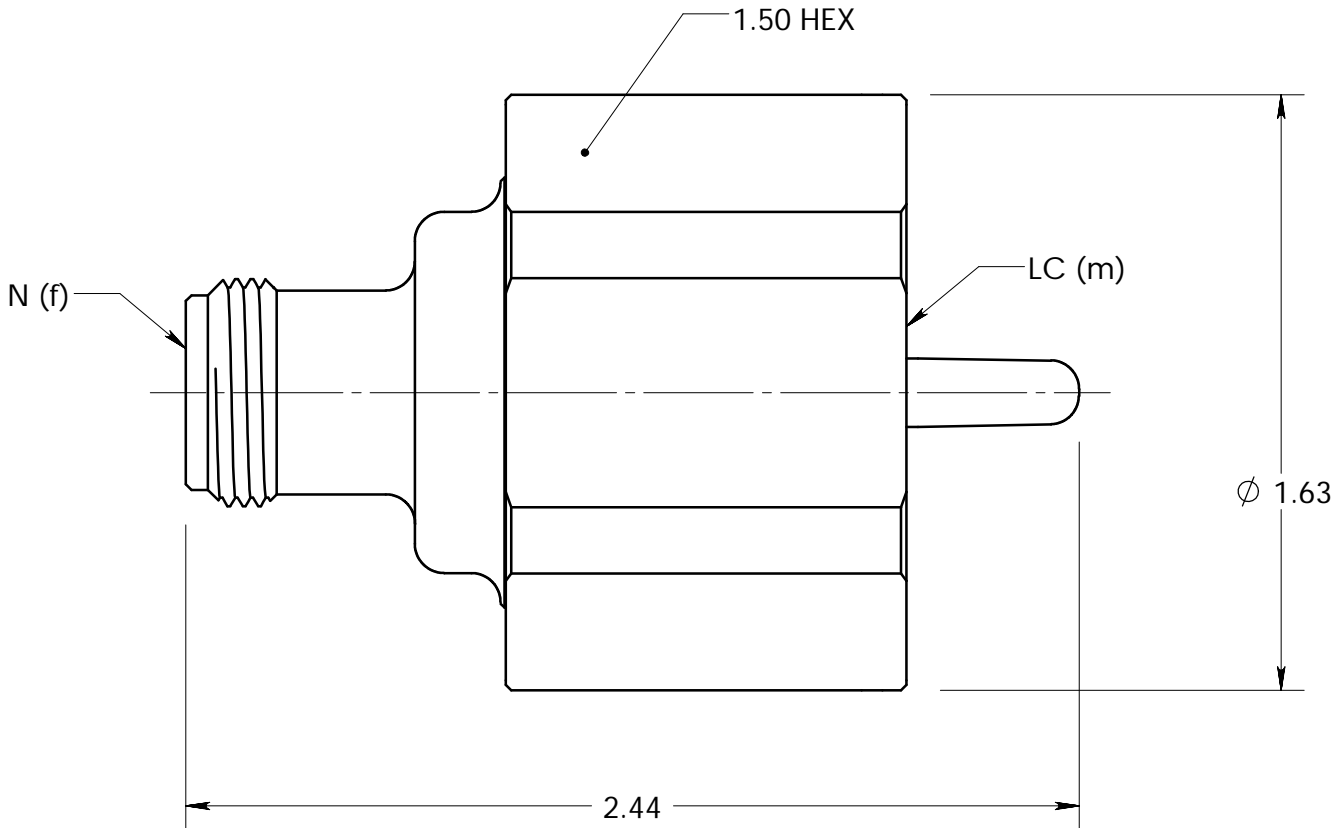
MECHANICAL:
INTERFACE: LC(m) per MIL-STD-348 Fig. 315.1
N (f) per MIL-STD-348 Fig. 304.2



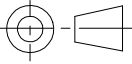
WEIGHT: 0.45 POUNDS

MATERIAL:
O-RING: SILICONE RUBBER per A-A-59588A, CLASS 2A, GRADE 50
INSULATOR: PTFE (Teflon) per ASTM-D1710, I1A
CENTER CONTACTS: BERYLLIUM COPPER C17300, TD04 per ASTM-B196
OUTER CONTACT FINGERS: BERYLLIUM COPPER C17300, TD04 per ASTM-B196
OTHER METAL PARTS: BRASS C36000, H02 per ASTM-B16

FINISH:
CENTER & OUTER CONTACTS: SILVER PLATED
OTHER METAL PARTS: NICKEL PLATED

- NOTES:
- UNLESS OTHERWISE SPECIFIED; ALL DIMENSIONS ARE REFERENCE ONLY.
 - PRODUCT COMPLIES WITH RoHS DIRECTIVE 2002/95/EC.



MATERIAL	DO NOT SCALE DRAWING	DRAWN RMK	DATE 7/31/07	<div> TRU CORPORATION 245 LYNNFIELD STREET, PEABODY, MA 01960 <small>The Custom Interconnect Leader™</small></div>		
	UNLESS OTHERWISE SPECIFIED: DIMENSIONS ARE IN INCHES	ENG APPR. KOCH	DATE 7/31/07			
	TOLERANCES: FRACTIONS: $\pm 1/64$.XX : $\pm .01$.XXX: $\pm .005$ ANGLES: $\pm 1/2^\circ$ MACHINED SURFACES: 	MFG APPR. -----	DATE .	TITLE: CONNECTOR, COAXIAL, RF ADAPTER, LC(m) to N(f)		
COMMENTS:		OTHER APPR. AM	DATE 8/9/07			
surface area: ERROR!surface area sq inch weight: 0.451 lbs		THIRD ANGLE PROJECTION 		SIZE B	DWG. NO. TRU-15034	REV -
				CAGE CODE: 92180	SCALE: 2:1	SHEET 1 OF 1