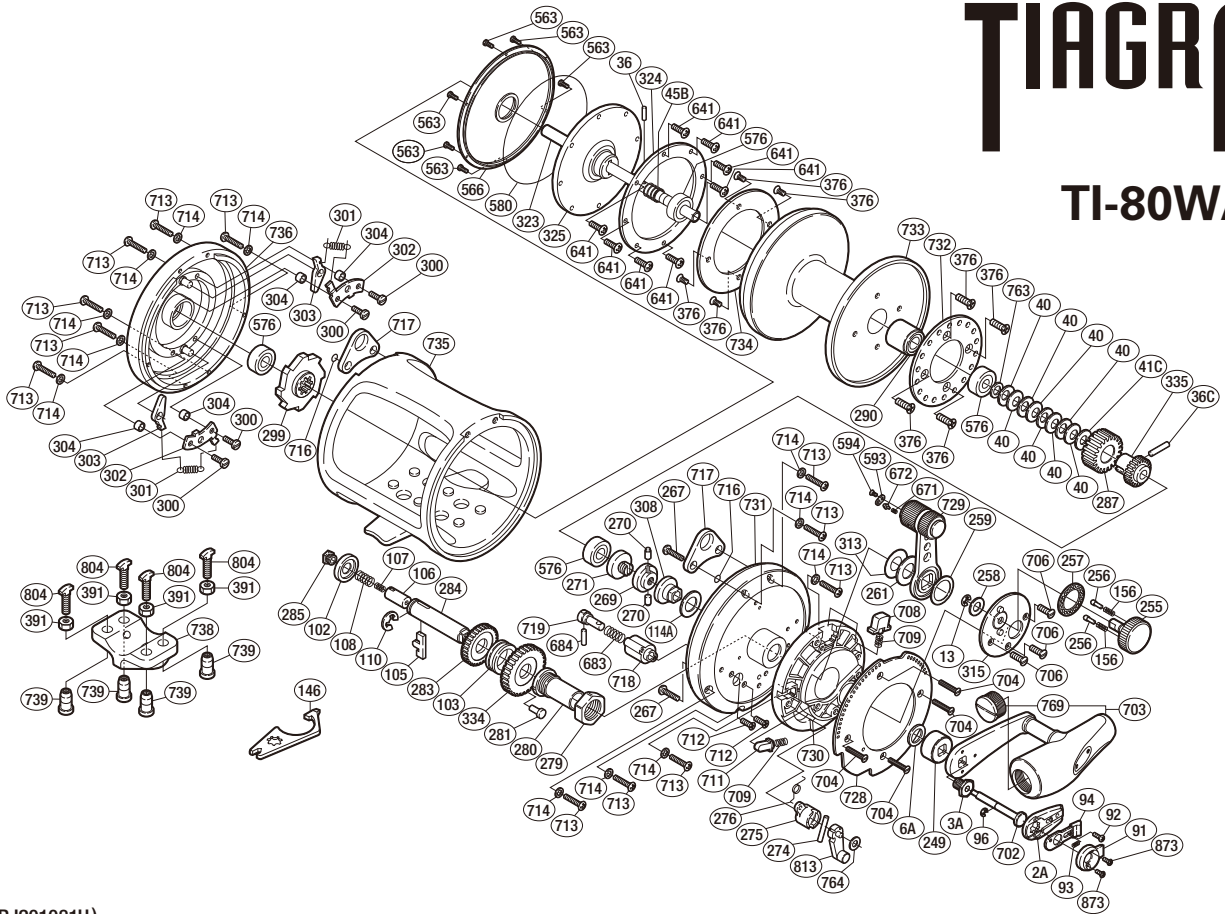


SHIMANO

TIAGRA

TI-80WA



(51RJ201081U)

#	Part No.	Description	#	Part No.	Description	#	Part No.	Description
0002A	10QUC	Handle Bolt Plate	0276	10F1S	Cross Pin Support Spring	0703	102UN	Handle Assembly
0003A	106XK	Handle Bolt	0279	10F3V	Holder Nut	0704	10PHU	Screw
0006A	1058B	Drive Shaft Washer	0280	1098D	Drive Shaft Holder	0706	10PHW	Screw
0013	105RY	C Lock	0281	10F3W	Lock Pin	0708	10CCF	Strike Stop
0036	104L8	Cross Pin A	0283	109VN	Drive Gear B	0709	10BNJ	Pressure Spring
0036C	10MCR	Cross Pin B	0284	105D6	Drive Shaft	0711	10BN9	Free Spool Detent
0040	1052E	Pre-Load Spring	0285	10FCB	Drive Shaft Screw	0712	10MPE	Screw
0041C	10HYB	Pre-Load Washer	0287	10N9B	Pinion Gear B	0713	10MGA	Screw
0045B	10CCS	Pressure Plate Spring	0290	10MHT	Piston Assembly	0714	10TTY	Washer
0091	109XD	Push Button Shield	0299	10D8T	Anti-Reverse Ratchet	0716	108W7	O Ring
0092	10LZ9	Screw	0300	103UX	Screw	0717	10PW7	Harness Lug
0093	10PWH	Slide Plate Spring	0301	10CBP	Dog Spring	0718	108CX	Plunger Holder
0094	109XC	Slide Plate	0302	10KNV	Set Plate	0719	108D2	Alert Plunger
0096	105NE	E Lock	0303	10PFY	Dog	0728	10C9Y	Lever Quadrant
0102	10D5A	Friction Washer A	0304	10KVK	Set Plate Support	0729	108B7	Drag Control Lever
0103	10D67	Friction Washer B	0308	10CAJ	Lever Shaft Body	0730	10F3L	Right Side Plate B
0105	10KXG	Gear Select Cross Bar	0313	108DE	Lever Thrust Ring	0731	109ZG	Right Side Plate A
0106	10KXX	Cross Bar Stop	0315	10BGY	Lever Hub Cover	0732	1052K	Alert Ratchet
0107	109VM	Drive Shaft Spring B	0323	10G2A	Main Shaft	0733	1032U	Spool
0108	10KXP	Drive Shaft Spring	0324	1060K	Drag Washer	0734	10G3Y	Drag Plate
0110	105S0	E Lock	0325	10G4H	Pressure Plate	0735	103VS	One-Piece Frame
0114A	10EWU	Washer	0334	10TUS	Drive Gear A	0736	107JJ	Left Side Plate
0156	10TUX	Friction Shoe Spring	0335	10A13	Pinion Gear A	0763	104L6	Bearing Thrust Washer
0249	107QP	Drive Shaft Shield	0376	10MLH	Screw	0764	10EZV	Spacer
0255	108DV	Pre-Program Dial	0563	10LVE	Screw	0769	105ZE	Handle Knob Bushing
0256	10CWE	Dial Click Shoe	0566	106AE	Cooling Shield	0813	108FW	Strike Alert Lever
0257	10J1U	Dial Click	0576	10BME	Ball Bearing	0873	10PHP	Screw
0258	108HD	Washer	0580	10EYX	O Ring			
0259	108GP	Lever Thrust Ring	0593	10C3Y	Lever Click Cover			
0261	108DD	Lever Thrust Ring	0594	10MGG	Screw			
0267	10PQS	Screw	0641	10LVJ	Screw	0391	10JCG	Rod Clamp Nut B (Accessory)
0269	10899	Pre-Program Key	0671	104BG	Lever Click Shoe	0738	10J9R	Rod Clamp (Accessory)
0270	10FMU	Pre-Program Key Pin	0672	10C3T	Lever Click	0739	10JC4	Rod Clamp Nut A (Accessory)
0271	1085K	Pre-Program Screw	0683	10GUU	Click Spring	0804	10J9Y	Rod Clamp Bolt (Accessory)
0274	10EZQ	Plunger Cross Pin B	0684	10EZX	Plunger Cross Pin A			
0275	10EZK	Plunger Cross Pin Support	0702	109WZ	Push Low Button Shaft	0146	10TUY	Wrench (Accessory)

Please note that the number of adjusting washers may not be the same as shown in the exploded views.
(Adjustment will vary with each individual product.)