



**24/7 HELP** For 24/7 customer support, visit [feit.com/help](http://feit.com/help)

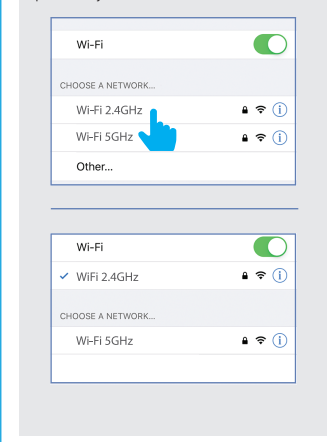
**System Requirements**  
Minimum System Requirements:  
iOS 11.0, Android™  
6.0 Marshmallow or higher  
- Dedicated 2.4GHz Wi-Fi Network -

Your screen images may differ from this user guide.

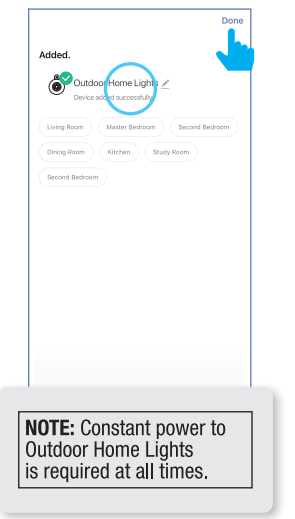
**BEFORE USING THIS USER GUIDE SEE INCLUDED INSTALLATION GUIDE FOR PROPER PRODUCT INSTALLATION.**

**NOTE: Only works with 2.4GHz Wi-Fi networks.**

Go to your Wi-Fi settings and connect your phone to your 2.4GHz Wi-Fi network.



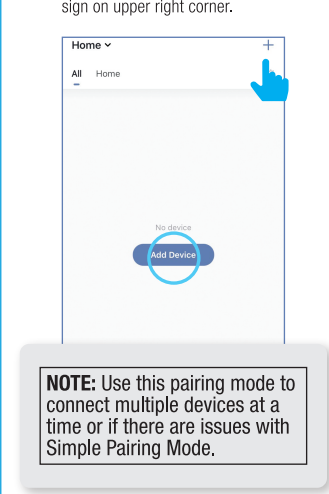
6 To rename the device, tap the **Pen** icon, enter the new name and tap **Done**. The Outdoor Home Lights is now ready to be controlled with the Feit Electric App.



**NOTE: Constant power to Outdoor Home Lights is required at all times.**

**Alternative Set-up Method EZ Mode**

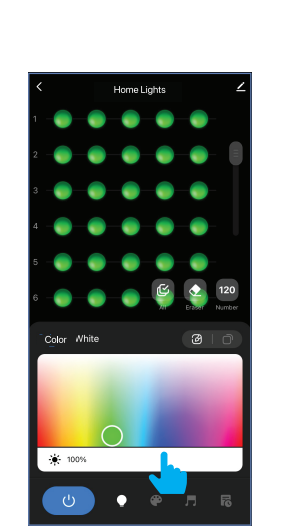
1 Install and power On light(s) then tap **Add Device** or the plus (+) sign on upper right corner.



**NOTE: Use this pairing mode to connect multiple devices at a time or if there are issues with Simple Pairing Mode.**

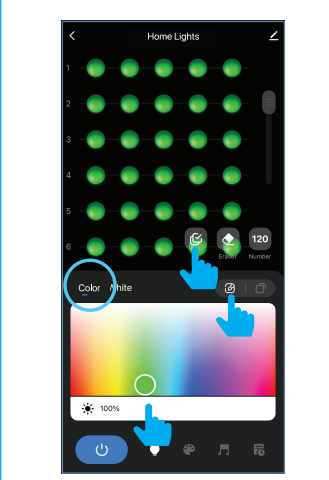
**Dimming**

4 Slide the **dimming bar** left or right to set the brightness level.



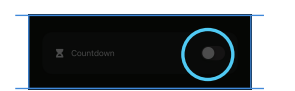
**Controlling all LED Lights**

5 To control **all** lights, tap on the checkmark icon on the bottom to select **all**. Then tap on the color to change to and slide to adjust the brightness.

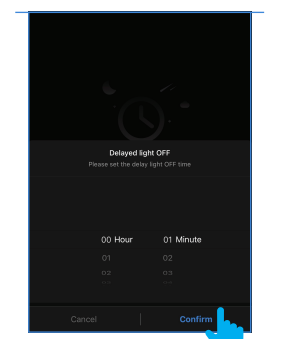


**Countdown**

15 Tap on **Countdown** or move the Countdown slider.

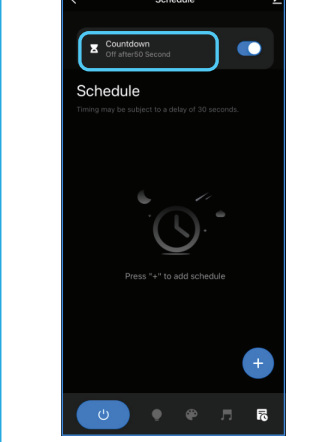


15a Set the time and confirm.



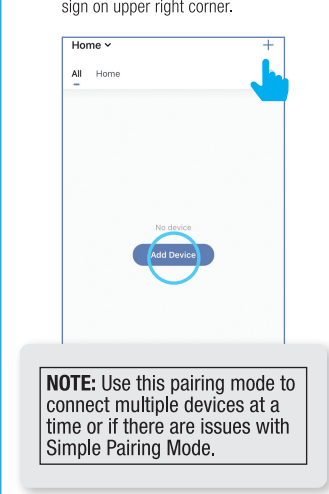
**Additional Features**  
Renaming/Removing devices

1 Additional features are available string light settings context menu, including renaming and removing devices. Tap the context menu in the upper right corner.



**Permissions & Location Access**

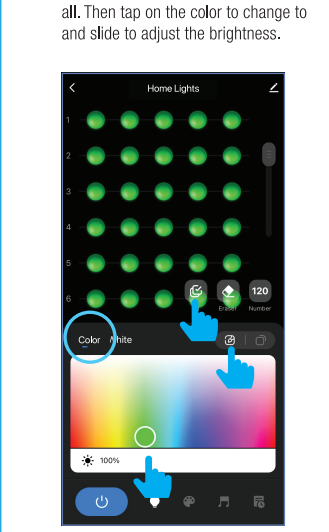
2 Launch the **Feit Electric** app. Enter an email address to register, then tap **Continue**. A verification code will be sent to your email.



**NOTE: AP Mode is an alternative method to connect your device if Simple Pairing Mode and EZ Mode are not successful.**

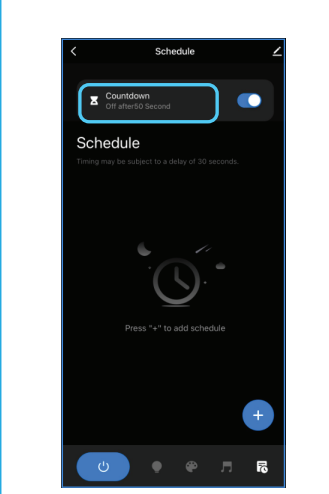
**Alternative Set-up Method AP Mode**

1 Tap the plus icon (+) in the upper right corner.



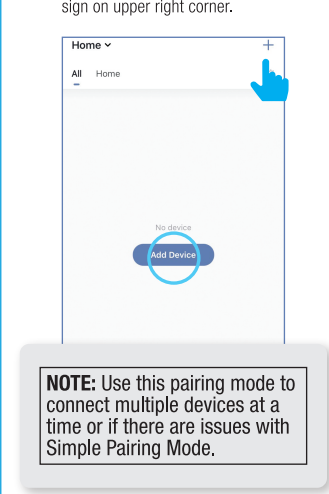
**Scenes Selection**

6 To select a scene, tap on the **Color Palette** icon.



**Adding Device**  
**NOTE: Only works with 2.4GHz Wi-Fi networks**

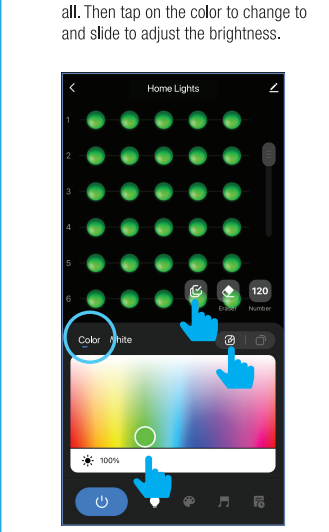
1 Install and power On light(s) then tap **Add Device** or the plus (+) sign on upper right corner.



**NOTE: If the Smart Outdoor Home Lights is pulsing warm white, hold the control module power button again for another 5 seconds to enter in AP mode. It will pulse cool white.**

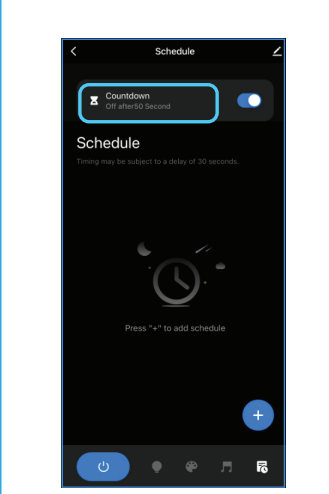
**Simple Pairing Mode**

1 Enable Bluetooth on your smart device for simple pairing.



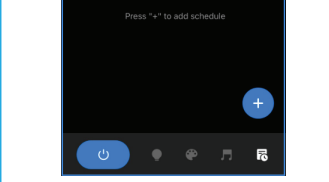
**Simple Pairing Mode**

2 Make sure the lights are blinking, then select one from the list. Tap on + sign.



**NOTE: If lights are NOT blinking, press and hold the Wi-Fi button on the Control Box for 5 seconds when lights are On to enter pairing mode. (See manual for more info).**

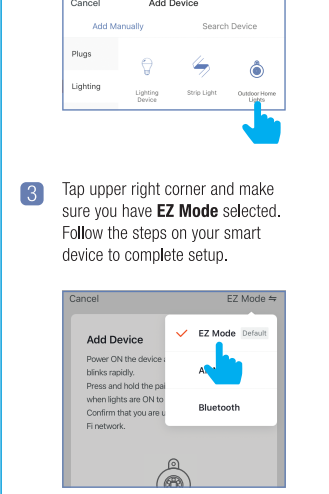
4 Select your 2.4GHz Wi-Fi network, tap **Next**.



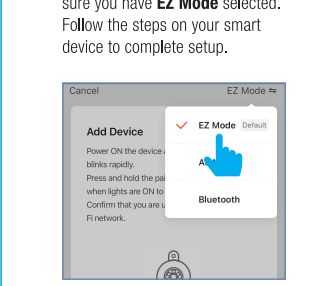
**NOTE: If unsuccessful, the "Failed to Add" screen will appear. Quit the app and repeat the previous steps.**

**Features**

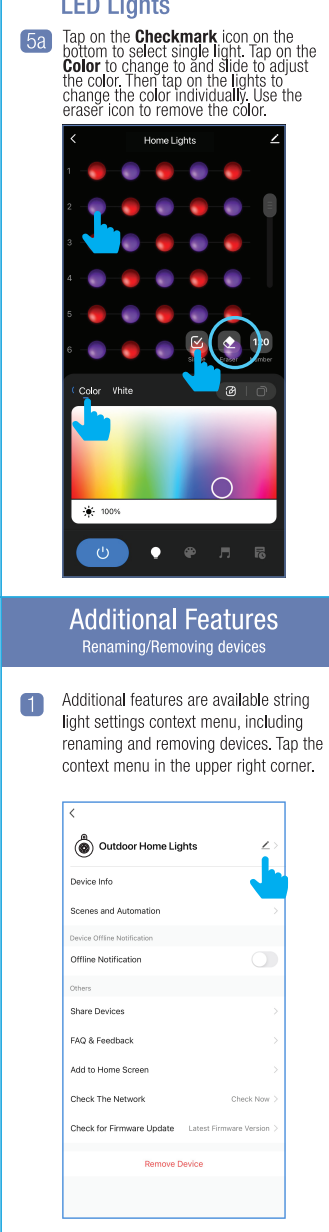
1 **Individual Outdoor Home Lights On/Off**  
Tap Outdoor Home Lights icon to turn the Light On/Off.



2 **Individual Outdoor Home Lights Setting**  
Press and hold the icon for two seconds for light settings.

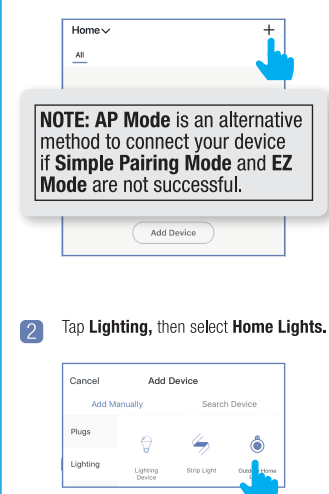


3 Set the number of LED Lights connected accordingly. Each icon controls 1 LED Light. (Maximum 120 LED lights).



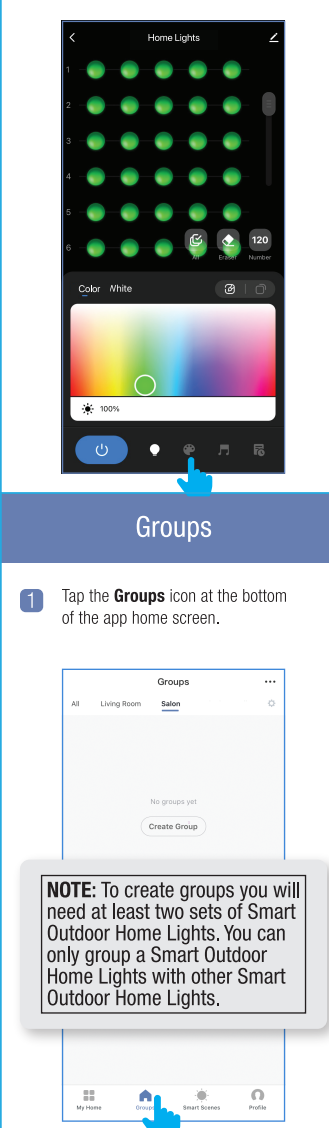
**Dimming**

4 Slide the **dimming bar** left or right to set the brightness level.



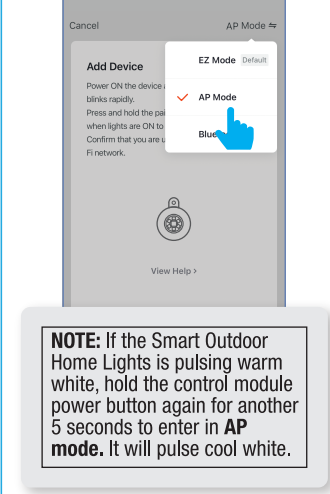
**Controlling all LED Lights**

5a Tap on the **Checkmark** icon on the bottom to select single light. Tap on the **Color** to change to and slide to adjust the color. Then tap on the lights to change the color individually. Use the eraser icon to remove the color.

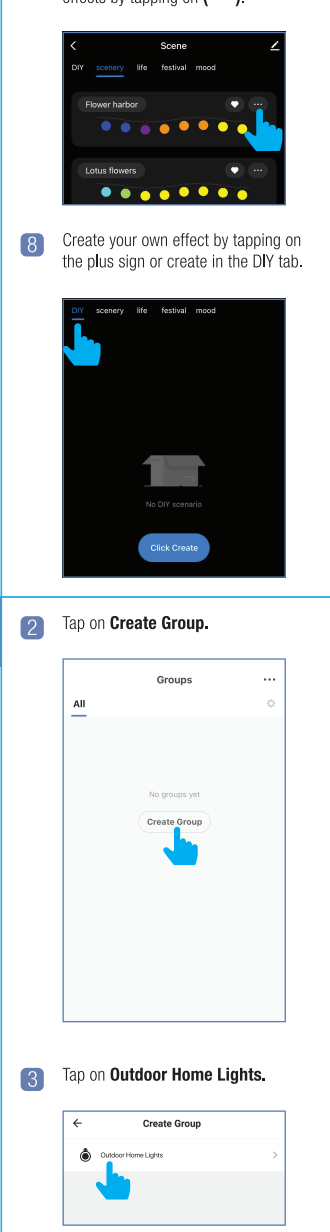


**Countdown**

15 Tap on **Countdown** or move the Countdown slider.

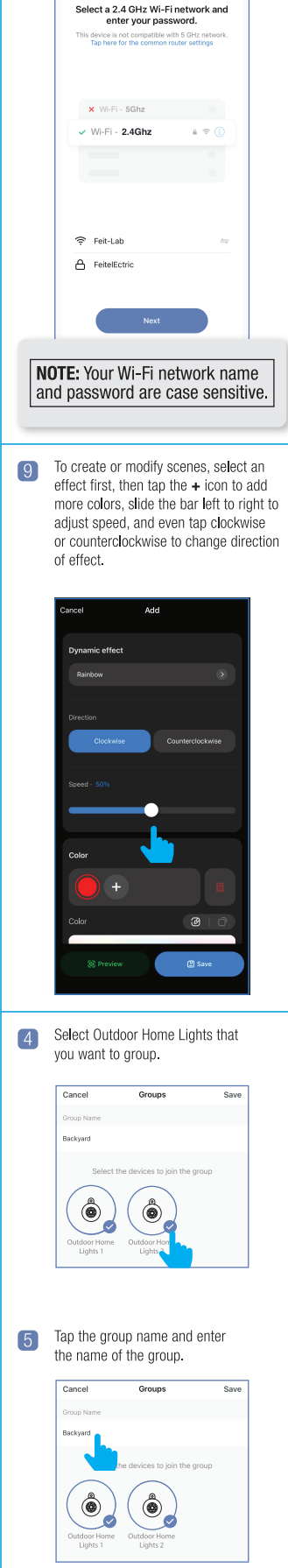


15a Set the time and confirm.



**Additional Features**  
Renaming/Removing devices

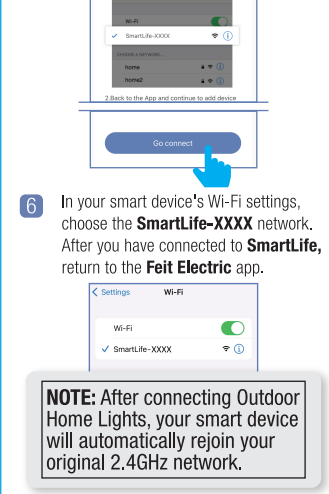
1 Additional features are available string light settings context menu, including renaming and removing devices. Tap the context menu in the upper right corner.



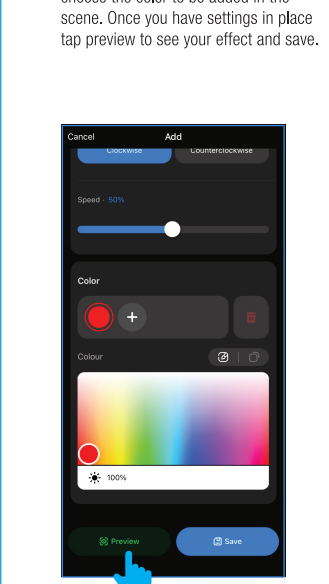
**NOTE: To create groups you will need at least two sets of Smart Outdoor Home Lights. You can only group a Smart Outdoor Home Lights with other Smart Outdoor Home Lights.**

**Groups**

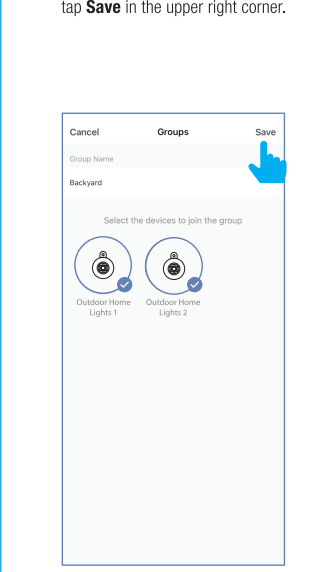
2 Tap on **Create Group**.



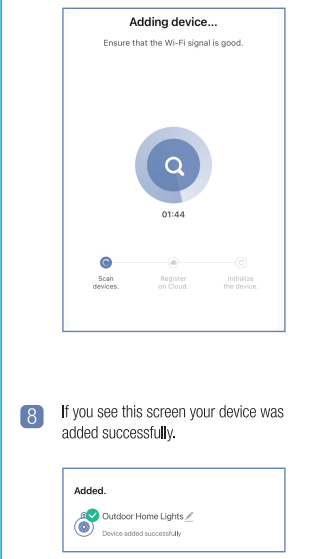
4 Select Outdoor Home Lights that you want to group.



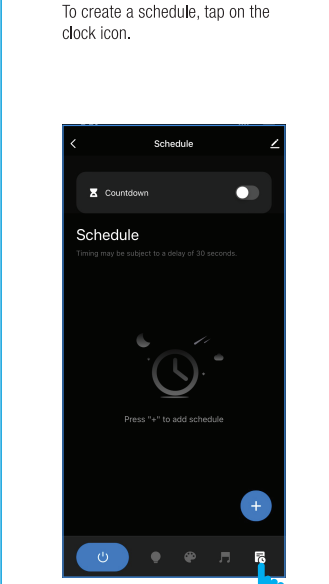
5 Tap on the group name and enter the name of the group.



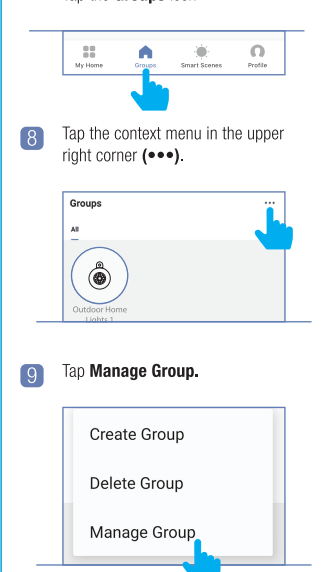
**Manage Groups**  
Tap the **Groups** icon.



8 Tap the context menu in the upper right corner (•••).

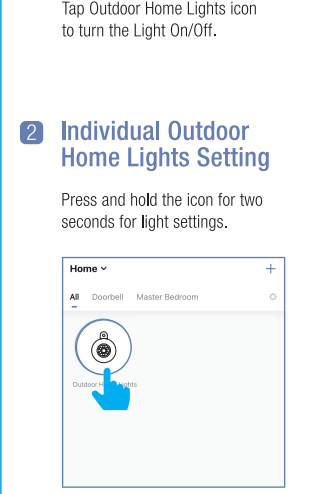


9 Tap **Manage Group**.

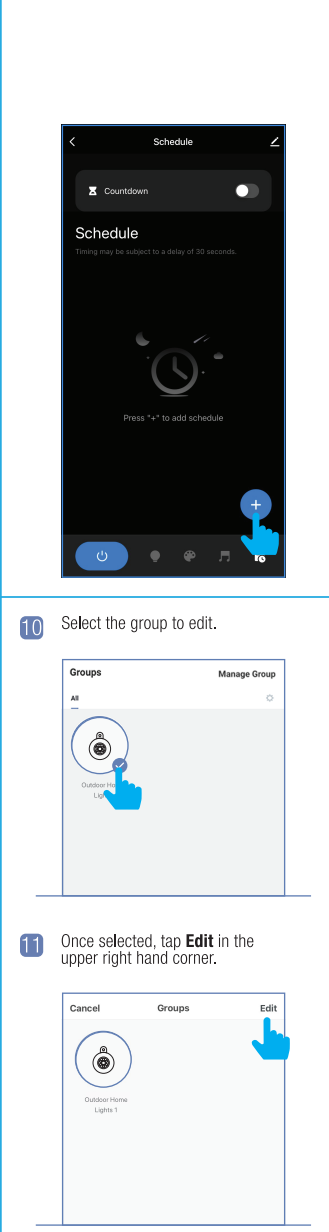


**Groups**

10 Select the group to edit.

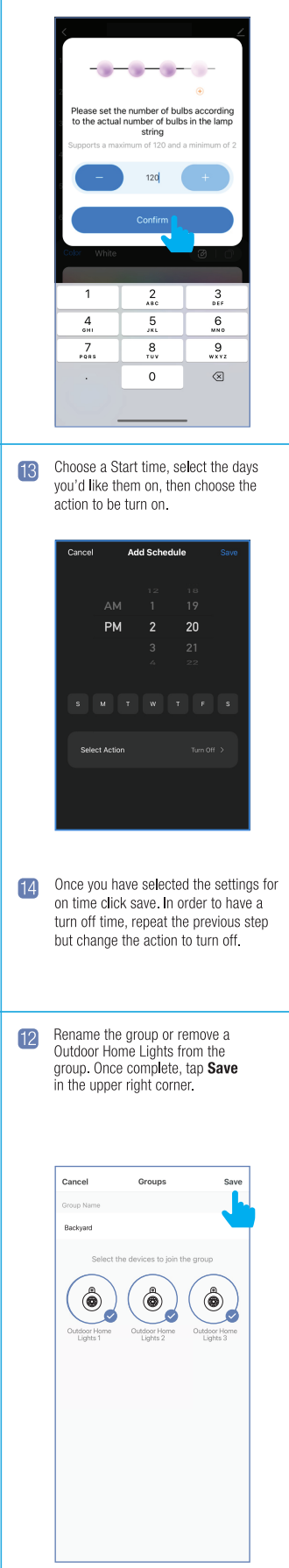


11 Once selected, tap **Edit** in the upper right hand corner.



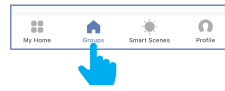
**Groups**

12 Rename the group or remove a Outdoor Home Lights from the group. Once complete, tap **Save** in the upper right corner.

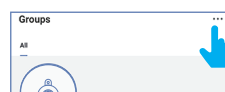


### 13 Delete Groups

Tap the **Groups** icon.



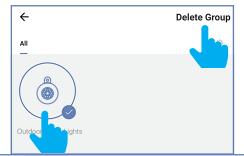
14 Tap the context menu in the upper right corner (☰).



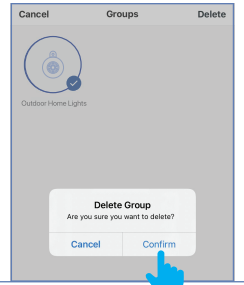
15 Tap **Delete Group**.



16 Select the group to delete. Once selected, tap **Delete Group** in the upper right corner.

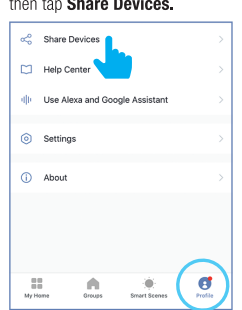


17 Tap **Confirm**.

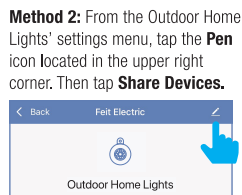


### Share Control of a Device (Two Methods)

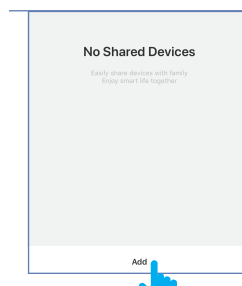
1 **Method 1:** Tap the **Profile** icon, then tap **Share Devices**.



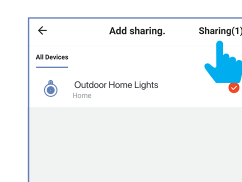
A **Method 2:** From the Outdoor Home Lights' settings menu, tap the **Pen** icon located in the upper right corner. Then tap **Share Devices**.



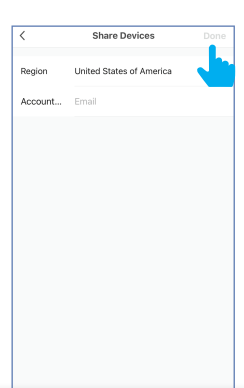
2 Tap **Add** at the bottom of the screen.



3 Select the device that you wish to share. Tap **Sharing** in the upper right corner.



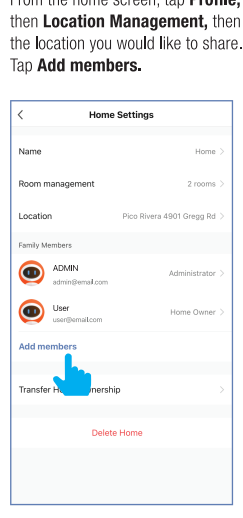
4 Enter the account name of the person you want to share with (this is typically their email address). Then tap **Done** when prompted.



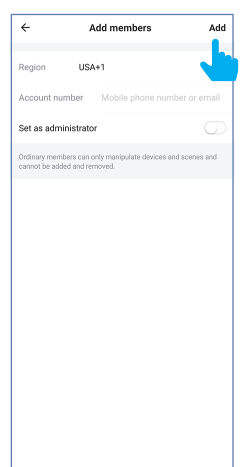
**NOTE:** New members must set up an account before sharing is possible.

### Share Control of All Devices Within a Location

1 From the home screen, tap **Profile**, then **Location Management**, then the location you would like to share. Tap **Add members**.

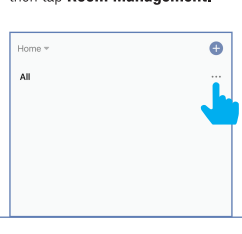


2 Enter the new member's email address then tap **Add**.

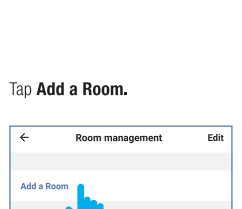


### Room Management

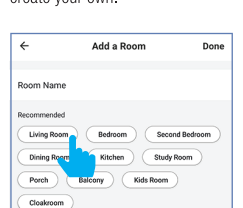
1 Tap the three dots from the home menu, then tap **Room Management**.



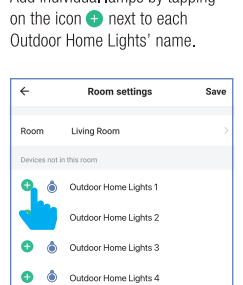
2 Tap **Add a Room**.



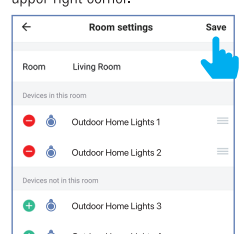
3 Tap on a preset room name or create your own.



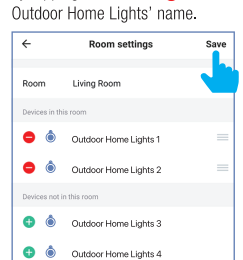
4 Add individual Lamps by tapping on the icon (+) next to each Outdoor Home Lights' name.



5 When finished, tap **Save** in the upper right corner.

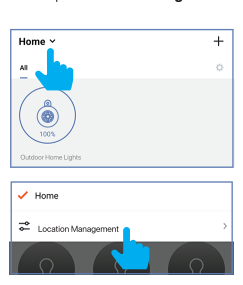


6 Remove individual Outdoor Home Lights by tapping on the icon (-) next to each Outdoor Home Lights' name.

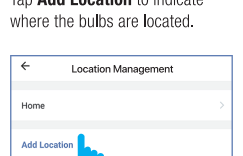


### Home Management

1 Tap **Home** from the main menu, then tap **Location Management**.

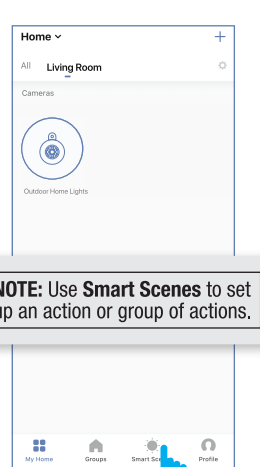


2 Tap **Add Location** to indicate where the bulbs are located.



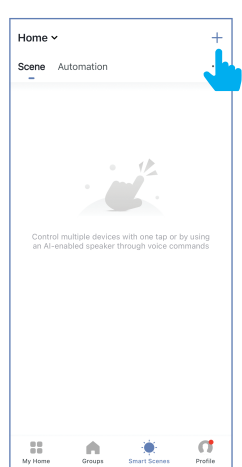
### Smart Scenes

1 From the **My Home** page, tap **Smart Scenes** at the bottom of screen.

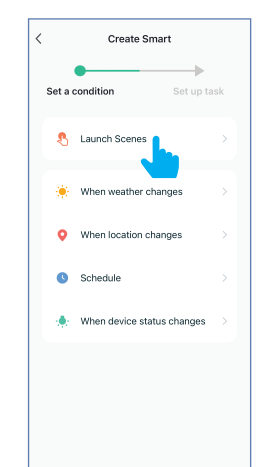


**NOTE:** Use Smart Scenes to set up an action or group of actions.

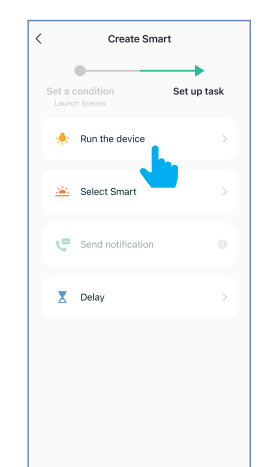
2 In the **Smart Scenes** tab, tap the plus icon (+).



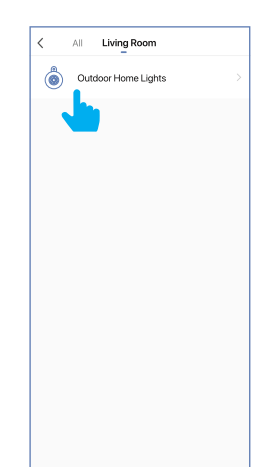
3 Tap on **Launch Scenes**.



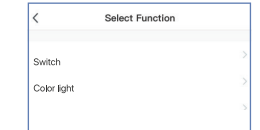
4 Tap on **Run the device**.



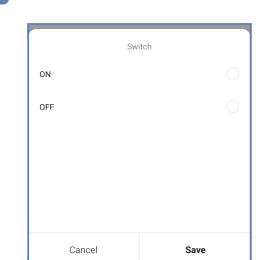
5 Select your device to initiate an action.



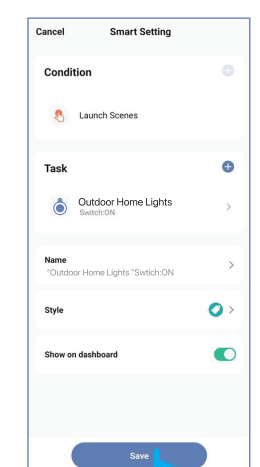
6 On the **Select Function** screen, tap on the action you want the device to perform.



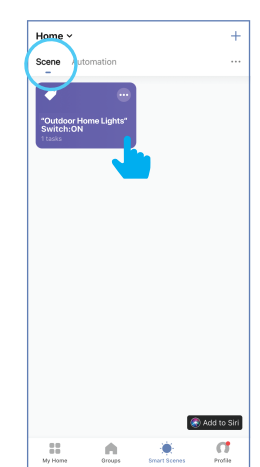
A On the **Switch** screen, tap **On** or **Off**.



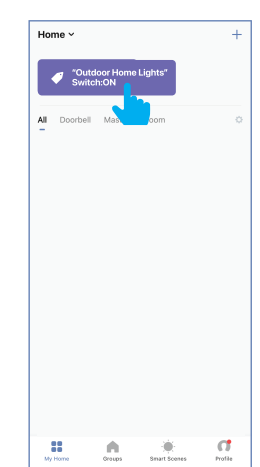
7 Review your scene, edit them if necessary, then **Save**.



8 Your action(s) will appear under **Scene** tab.

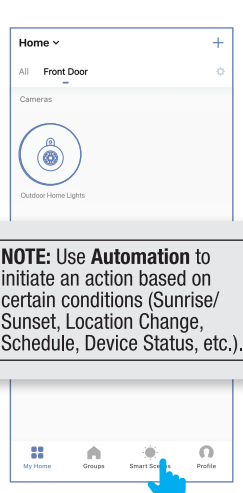


A It will also appear on the top of your **My Home** screen. Tap to execute your action(s).



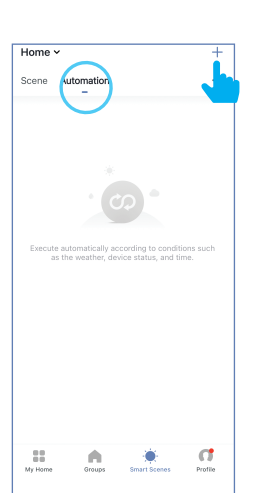
### Automation

1 From the **My Home** page, tap **Smart Scenes** at the bottom of screen.

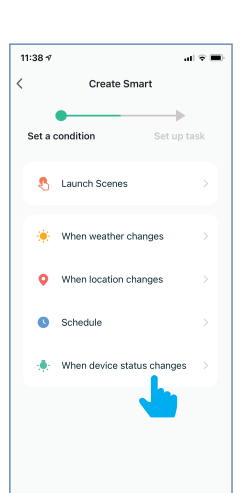


**NOTE:** Use Automation to initiate an action based on certain conditions (Sunrise/Sunset, Location Change, Schedule, Device Status, etc.).

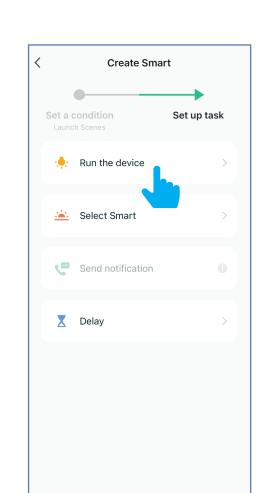
2 Tap **Automation** at the top of the screen, and then tap on plus icon (+).



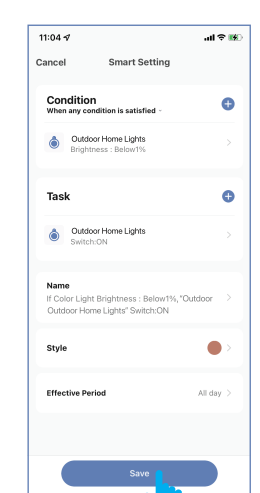
3 **Set a condition** you would like to trigger.



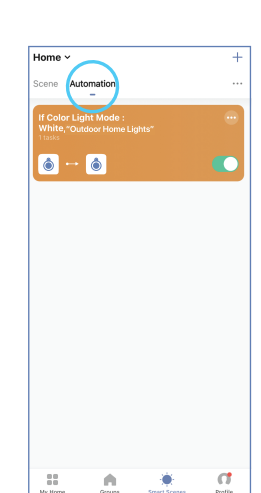
4 **Set up a task** you would like to automate.



5 Review your automations, edit them if necessary, then **Save**.

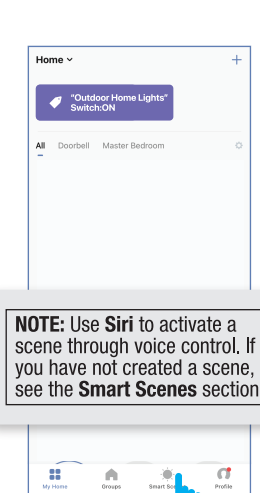


6 Your automation will appear under the **Automation** tab.



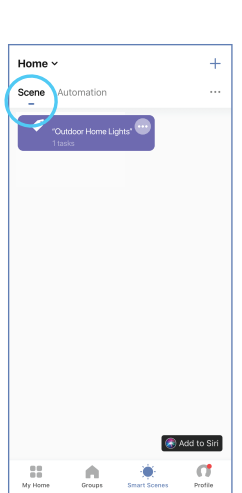
### Enable Siri Shortcuts® (for use with iPhone)

1 From the **My Home** page, tap **Smart Scenes** at the bottom of screen.

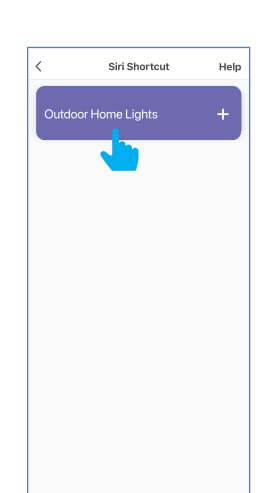


**NOTE:** Use Siri to activate a scene through voice control. If you have not created a scene, see the **Smart Scenes** section.

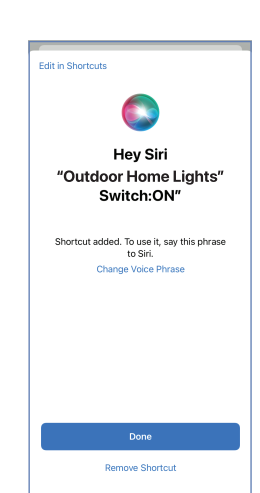
2 In the **Scene** tab, tap **Add to Siri** located at the bottom of the screen.



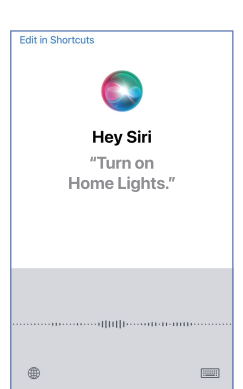
3 In the **Siri Shortcut** screen, tap on the action you would like to add to **Siri**.



4 On the **"Hey Siri"** screen, tap on the device name to edit it. Tap **Done** at the bottom of the screen.

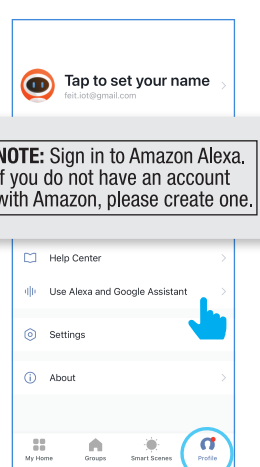


5 Now you can use the **"Hey Siri"** command to control this action from your iOS device. **"Hey Siri, turn on Outdoor Home Lights."**



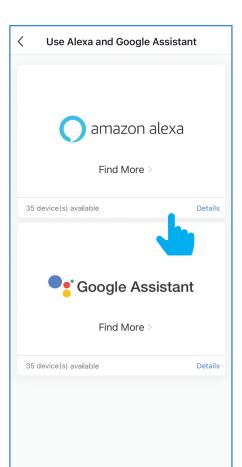
### CONNECT TO ALEXA

1 Tap on **Profile** at bottom right. Tap on **Use Alexa and Google Assistant**.

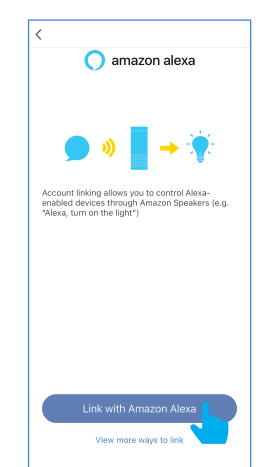


**NOTE:** Sign in to Amazon Alexa. If you do not have an account with Amazon, please create one.

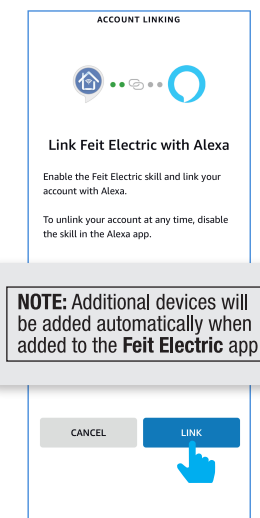
2 Tap on **Amazon Alexa**.



3 Tap on **Link with Amazon Alexa**.



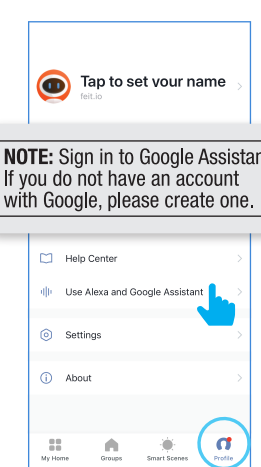
4 Tap on **Link**. You will be linked automatically to your Amazon Alexa app.



**NOTE:** Additional devices will be added automatically when added to the **Feit Electric** app.

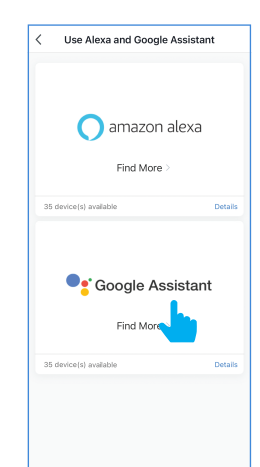
### CONNECT TO GOOGLE ASSISTANT

1 Tap on **Profile** bottom right. Tap on **Use Alexa and Google Assistant**.

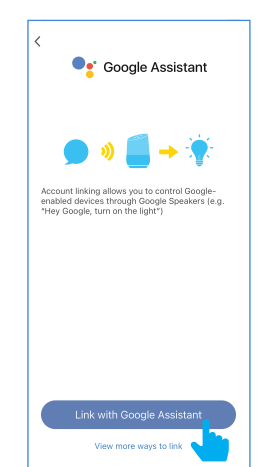


**NOTE:** Sign in to Google Assistant. If you do not have an account with Google, please create one.

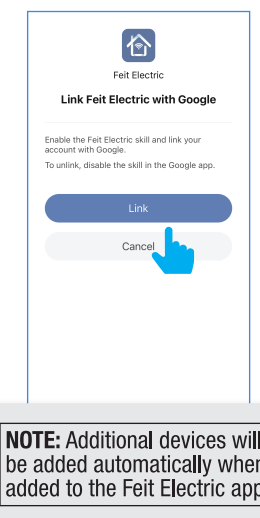
2 Tap on **Google Assistant**.



3 Tap on **Link with Google Assistant**.



4 Tap on **Link**. You will be linked automatically to your Google Assistant app.



**NOTE:** Additional devices will be added automatically when added to the **Feit Electric** app.

## Need Help?

Please refer to our online resources at [www.feit.com/help](http://www.feit.com/help) to learn about more features & latest updates

