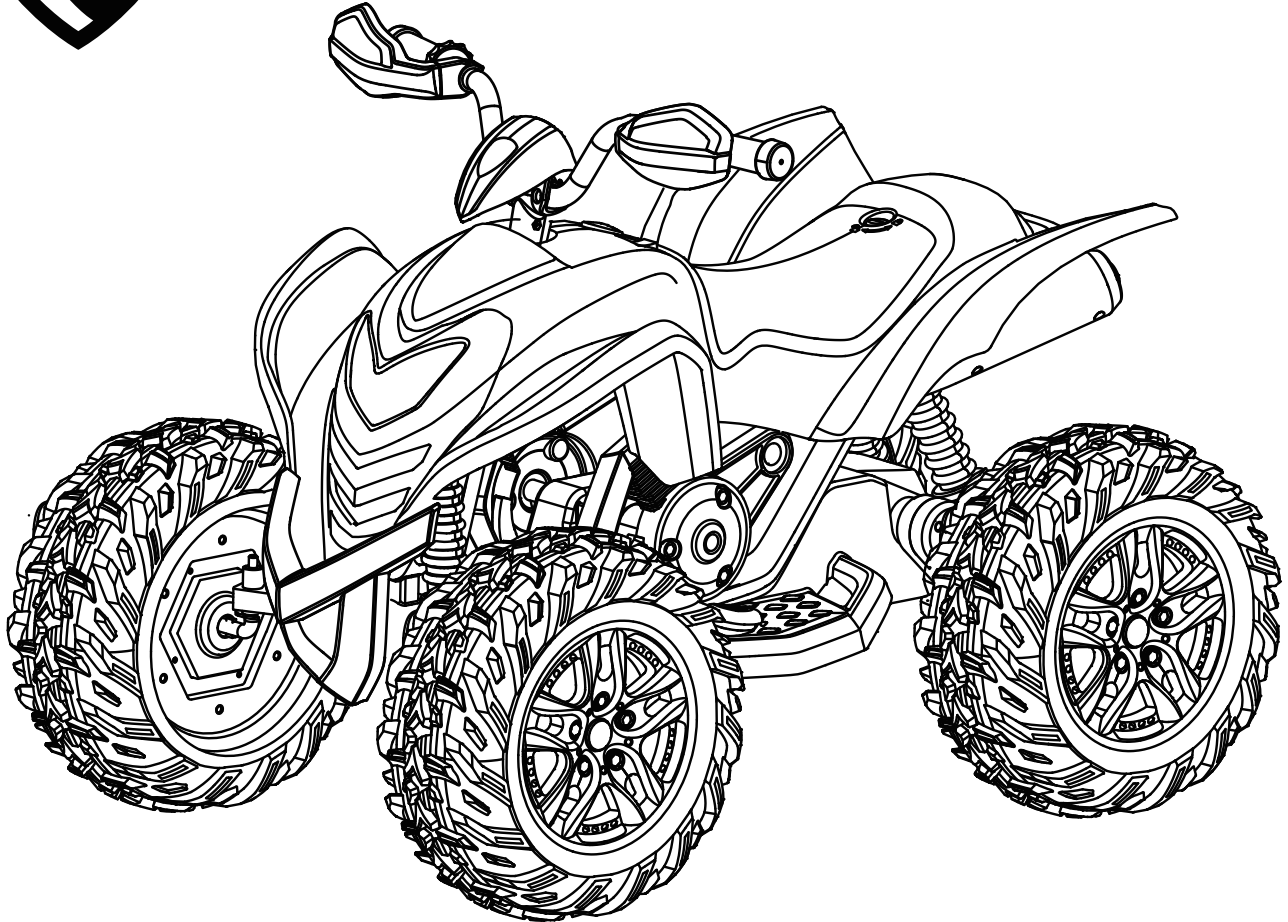




12V Powersport ATV Max



Owner's Manual and Assembly Instructions

Model #: W442AC, W442, W442B-R-WH

Read the entire manual carefully before assembly and operation. The vehicle must be assembled by an adult who has read and understands the instructions.

Made in China.

Styles and colors may vary. Do not return your product to the store, contact Rollplay with questions. Email customerservice@rollplay.com for assistance and replacement parts.

IMPORTANT:

Save this manual with your sales receipt.

Introduction

Thank you for purchasing this Rollplay vehicle. We hope the rider enjoys it for miles to come. Please read this instruction guide carefully before assembling and operating the vehicle.

Please contact Rollplay Customer Service with any questions. Have your model number and serial number ready before calling. Please provide proof of purchase.

Keep your sales receipt and register your product at www.rollplay.com.

Hours: 8 AM - 5 PM EST, Monday - Friday

Phone: 1-888-982-9309

Email: customerservice@rollplay.com

Web: www.rollplay.com

Specifications:

BATTERY	12 V 7 AH
MOTOR	6 V 20 W
AGE	3 and up
MAX WEIGHT	77 lb (35 kg)
PRODUCT SIZE	39.0 x 24.0 x 23.6 in (99 x 61 x 60 cm)
SPEED	2.5-3 mph (4-4.8 km/h)
RECHARGE TIME	8-12 Hours
TYPICAL RUN TIME	1-2 Hours
CHARGER OUTPUT	DC 12.0 V

IMPORTANT!

**YOU MUST CHARGE THE BATTERY
FOR 24 HOURS (NO MORE THAN
30 HOURS) BEFORE FIRST USE!**

Charge the battery after each use.

Charge the battery at least once a month, even if the vehicle is not in use.

DO NOT RETURN YOUR PRODUCT TO THE STORE.
CONTACT ROLLPLAY WITH QUESTIONS.

E-mail Customer Service if you need assistance or replacement parts.
Please have your model number and serial number ready before calling.
Please provide proof of purchase. Keep your sales receipt and register your
product at www.rollplay.com, as we require proof of purchase.

customerservice@rollplay.com

**Read this entire manual prior to
assembly to ensure safe operation
of the vehicle.**

4 Table of Contents

Safety.....	5
Parts	7
Charging Instructions.....	8
Assemble the Front Wheels.....	9
Assemble the Rear Wheels.....	10
Assemble the Steering Rod.....	11
Assemble the Handlebar	12
Assemble the Front Bumper.....	13
Attach the Seat	14
Operating Instructions	15
Battery Maintenance	16
General Care	17
Troubleshooting Guide.....	18
FCC Information	20
Service and Repairs	21
Warranty	22
Product Registration	23



WARNING: SAFETY RIDING RULES

The user must follow all safety rules and guidelines or serious injury or death may occur.

NEVER LEAVE CHILD UNATTENDED. ALWAYS keep child in view when child is in the vehicle. Direct adult supervision is **REQUIRED**.

- **ALWAYS** use common sense and safe practices when using the vehicle. The user must be at least 3 years old and weigh no more than 77 lb (35 kg).
- This product contains small parts that are for adult assembly only. Keep small children away when assembling. Remove and dispose of all protective material and plastic bags before assembly.
- Riders must always wear a fitted helmet that complies with U.S. Consumer Product Safety Commission (CPSC) Standard 16 CFR 1203.
- Only sit on the seat in the vehicle.
- Do not allow more than one rider.
- Do not overload the vehicle. Do not remove the weight restriction decals.
- Do not tow the vehicle with another vehicle or similar device.
- Keep body parts, such as hands, legs and hair, and clothing away from moving parts. Moving parts can cause serious injury.
- **ALWAYS** wear shoes while using the vehicle.
- **NEVER** operate near roadways or motor vehicles.
- Do not operate near drop-offs, such as steps, steep inclines or hills. Operate on relatively level ground.
- Do not operate near water, swimming pools or other bodies of water.
- Do not operate in dangerous weather conditions such as rain or snow.
- Do not operate near loose dirt, mud, sand or fine gravel.
- Always use the vehicle in a safe, secure environment with adult supervision.

RISK OF FIRE. Do not operate near flammable vapors (gasoline, paint thinner, acetone, etc.). Remove batteries if product is to be left unused for a long time. Do not bypass. Replace only with supplied 12V battery, charger and circuitry. Always replace the whole set of batteries at one time, taking care not to mix old and new batteries, or batteries of different types.



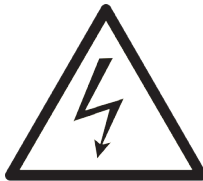
WARNING: BATTERY SAFETY

- Battery posts, terminals and related accessories contain lead and lead components. **DO NOT** open the battery.

PROPOSITION 65 WARNING: Battery posts, terminals and related accessories contain lead and lead compounds, chemicals known to the State of California to cause cancer and reproductive harm. Batteries also contain other chemicals known to the State of California to cause cancer. **WASH HANDS AFTER HANDLING.**



- Contact exposure to battery leakage (lead acid) may cause serious injury. Immediately contact your doctor if exposure occurs. If the chemical is on the skin, flush immediately with cool water for 15 minutes. If the chemical is swallowed, immediately give the person water or milk. Do not give water or milk if the person is vomiting or has decreased alertness. Do not induce vomiting.



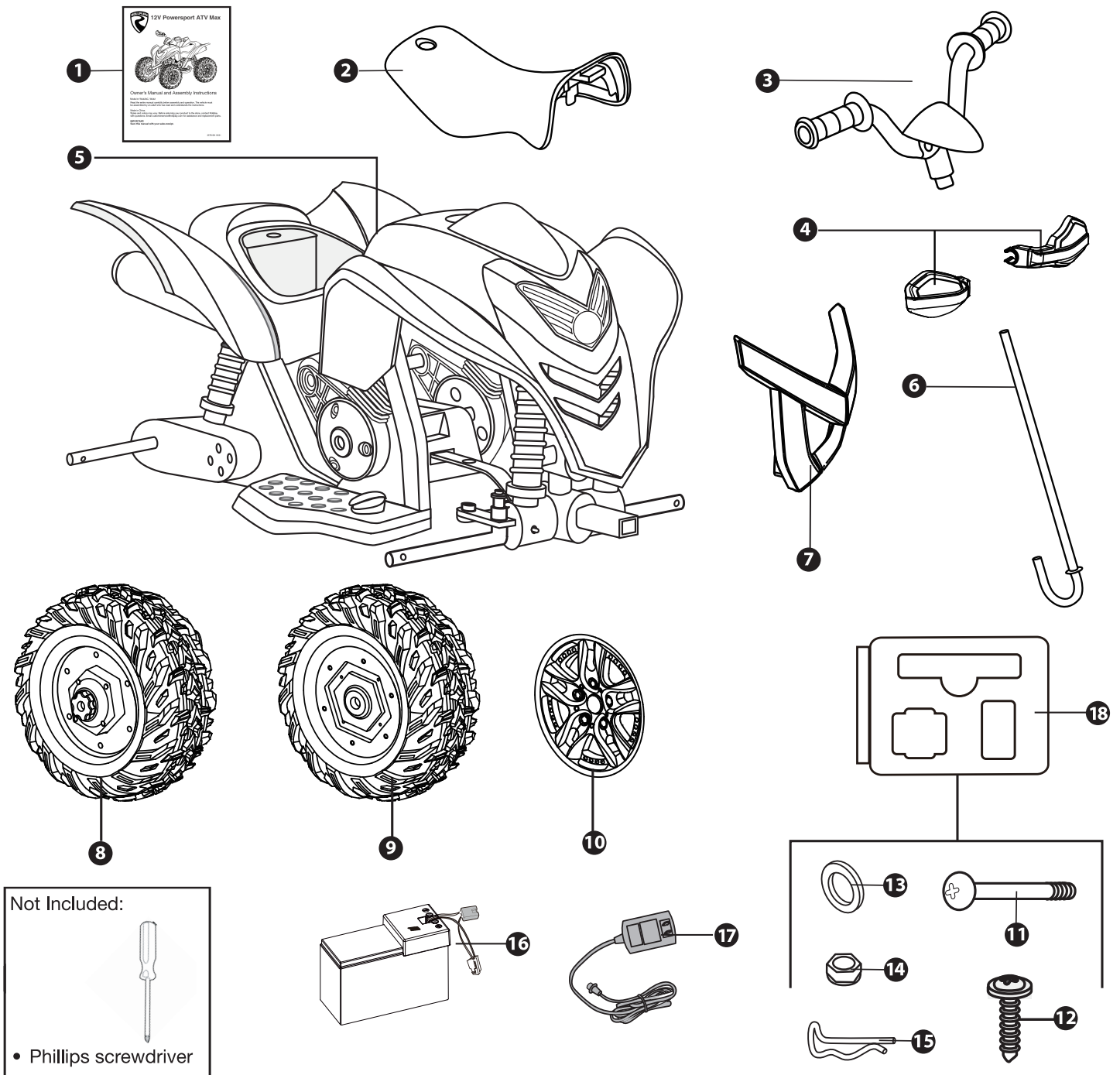
- Tampering with or modifying the electric circuit system may cause shock, fire or explosion. It could permanently damage the system. Keep the charger housing closed to prevent exposed wiring, which may cause electric shock.

IMPORTANT: Before using the vehicle for the first time, the battery must be charged for a full 24 hours (no more than 30 hours).



WARNING: ADULT SUPERVISION REQUIRED

- Before using the vehicle, the rider must understand the vehicle controls and safety issues.
- It is the responsibility of the adult to educate the child and to determine if the child is capable of understanding the vehicle controls.
- An adult must **ALWAYS** directly supervise the use of this vehicle.
- **NEVER** leave a child unsupervised in the vehicle.



1. Manual
2. Seat
3. Handlebar
4. Hand Guard (x2)
5. Vehicle Body
6. Steering Rod
7. Front Bumper
8. Rear Wheel (x2)
9. Front Wheel (x2)
10. Wheel Cover (x4)
11. Handlebar Screw*
12. Front Bumper Screw*
13. Washer (x6)*
14. Handlebar Nut*

15. Snap Pins (x4)*
 16. Battery (located underneath the seat)
 17. Charger
 18. Blister Pack
- *Parts 11-15 are shipped in the Blister Pack (18)

NOTE: There may be extra hardware included for your convenience.

8 Charging Instructions

YOU MUST CHARGE THE BATTERY FOR 24 HOURS (NO MORE THAN 30 HOURS) BEFORE THE FIRST USE!

ONLY AN ADULT SHOULD HANDLE THE BATTERY AND CHARGER.

To Charge the Battery:

1. Ensure the ATV is stopped and turned off.
2. Unlock the seat lock using a coin or screwdriver and remove the seat (fig. 1).
3. Unplug the red battery connector from the red engine connector.
4. Connect the red battery connector to the red battery charger connector (fig. 2).
5. Plug into a 120 V outlet.

To Reconnect the Battery:

6. Unplug the battery charger from the outlet.
7. Unplug the red battery connector from the red battery charger connector.
8. Reconnect the red battery connector to the red engine connector (fig. 3).
9. Replace the seat and tighten the lock.

Note: It is not necessary to remove the battery for charging. However, if the battery does not reach the outlet, it can be removed for charging.

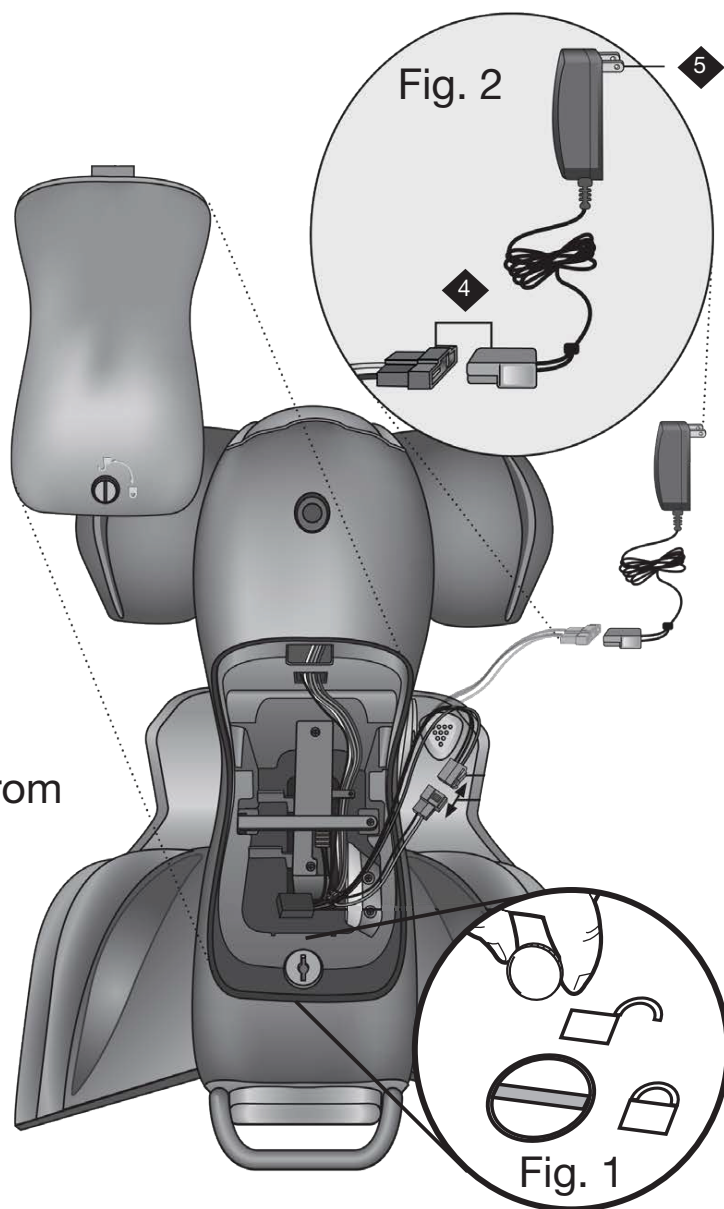
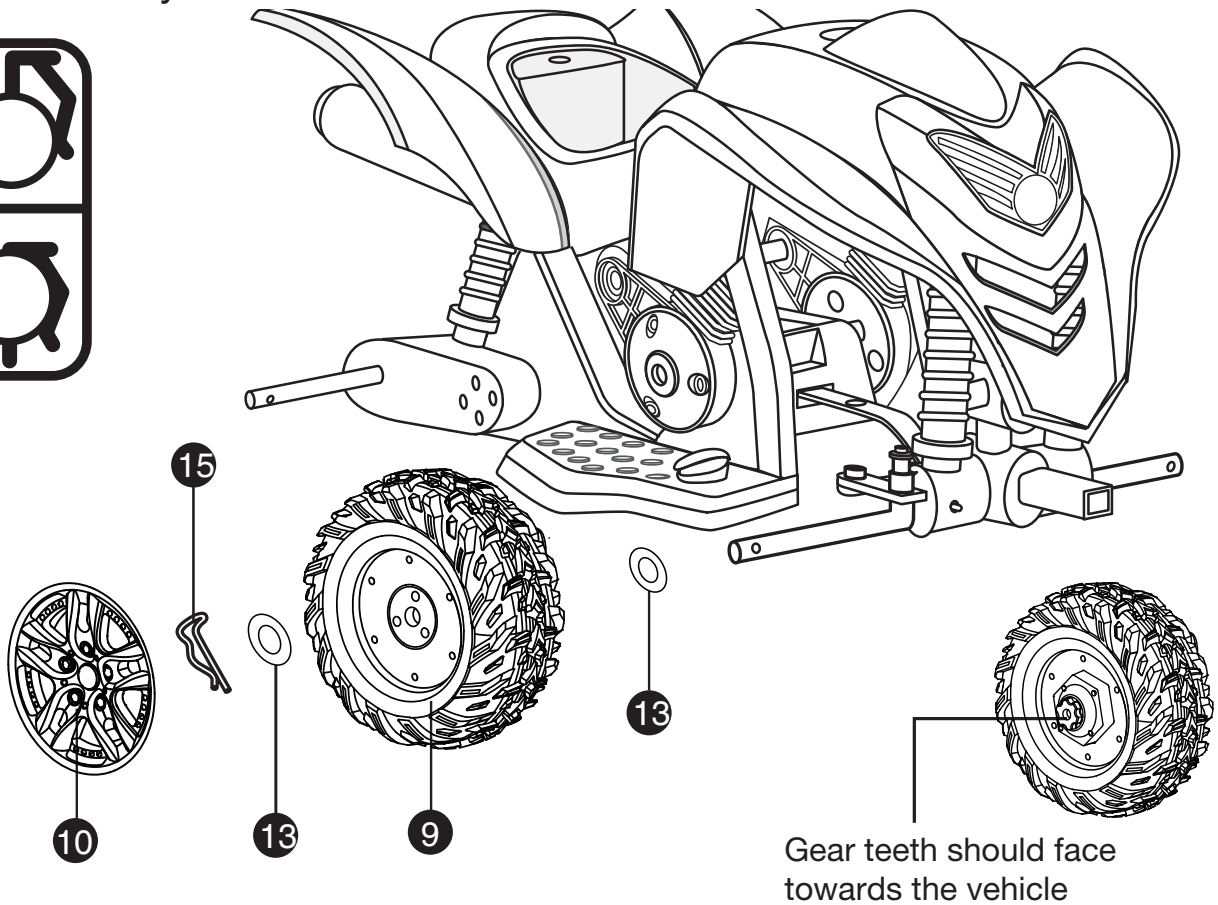
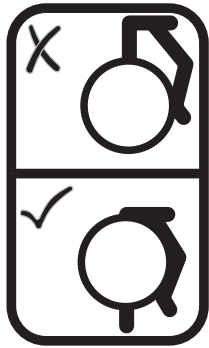
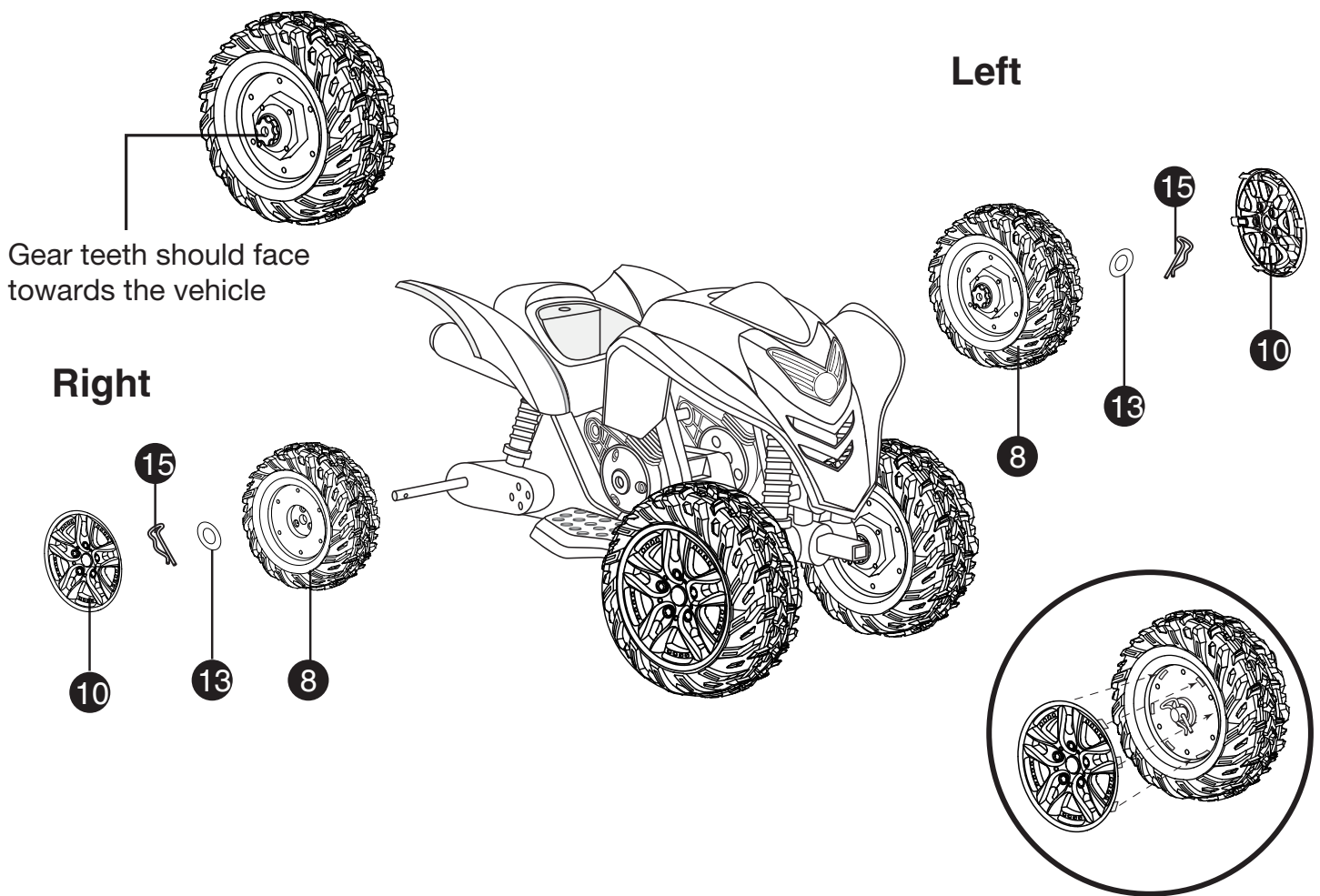


Fig. 3

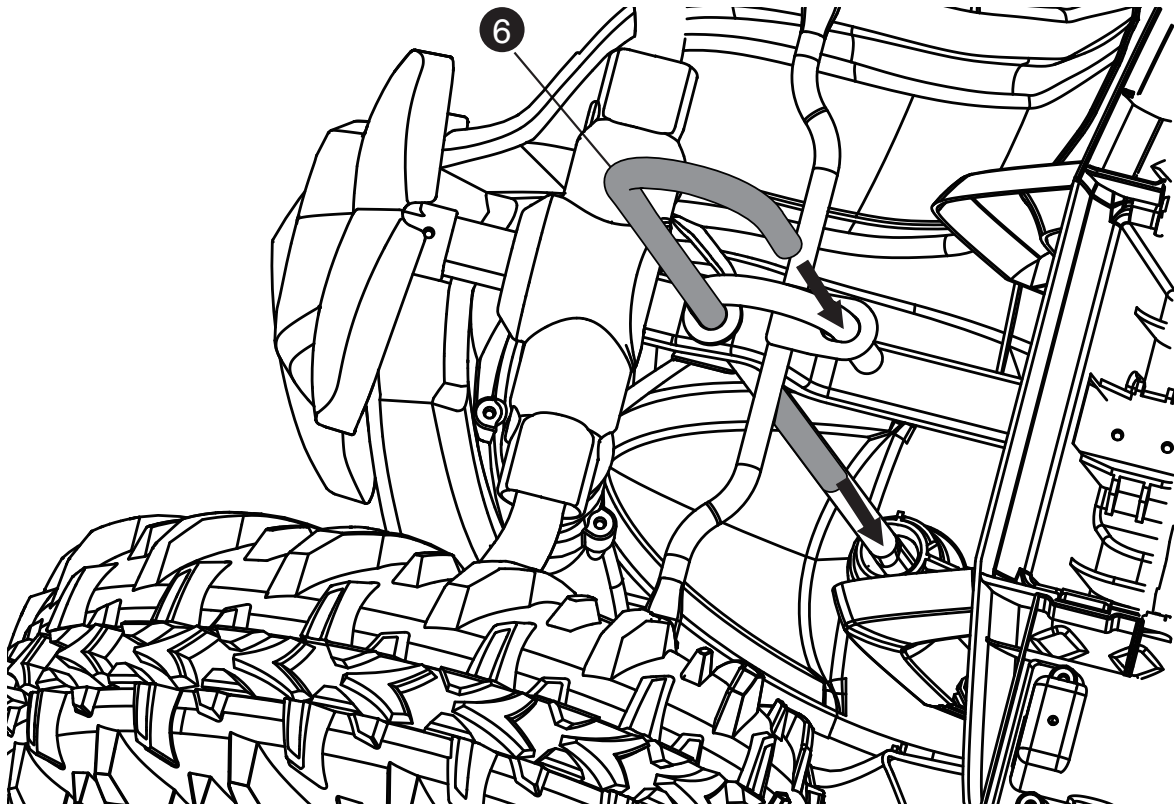
Snap Pin Assembly



1. Locate the Washers (13) and Snap Pins (15) in the Blister Pack (18).
2. Slide a Washer (13) on the axle.
3. Slide the Front Wheel (9) on the axle, with the gear teeth facing in towards the vehicle. Then, slide another Washer (13) on the axle.
4. Slide a Snap Pin (15) into the hole on the axle.
5. Snap a Wheel Cover (10) on the Wheel, making sure the tabs and slots align. Note: If the Wheel Cover falls off, it may not have been snapped in all the way.
6. Repeat steps 1-5 for the other Front Wheel (9).

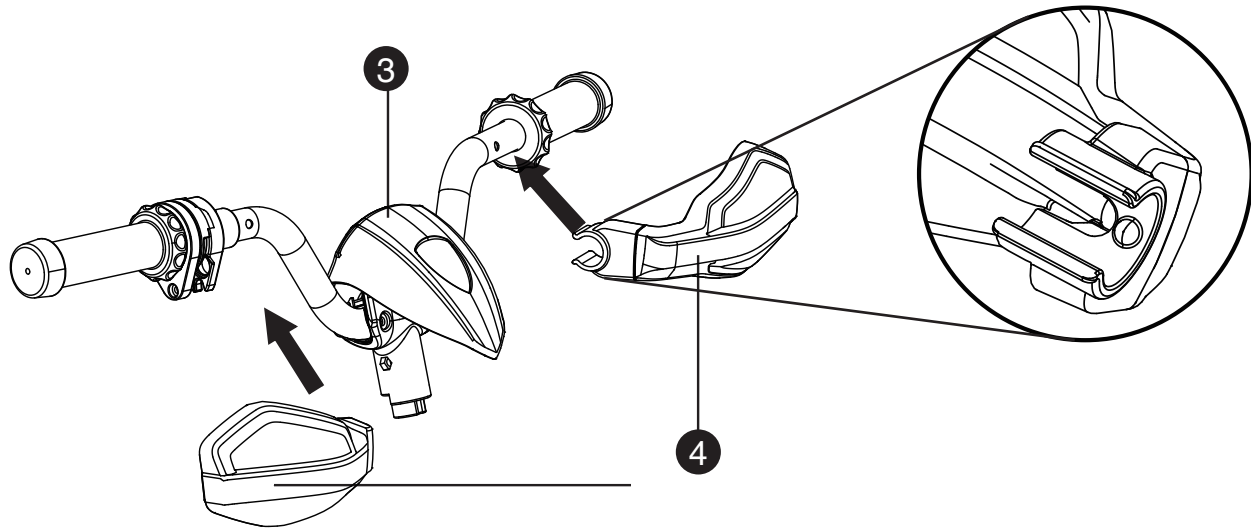


1. Locate the Washers (13) and Snap Pins (15) in the Blister Pack (18).
2. Slide a Rear Wheel (8) on the axle with the gear teeth facing in towards the vehicle.
3. For the left (driver's side) Rear Wheel (8), align the gear teeth on the wheel with the gear box on the axle.
4. Slide a Washer on the axle.
5. Slide the Snap Pin through the holes on the axle.
6. Snap the Wheel Cover (10) onto the wheel, making sure all four tabs and slots align.
7. Repeat for the other Rear Wheel.

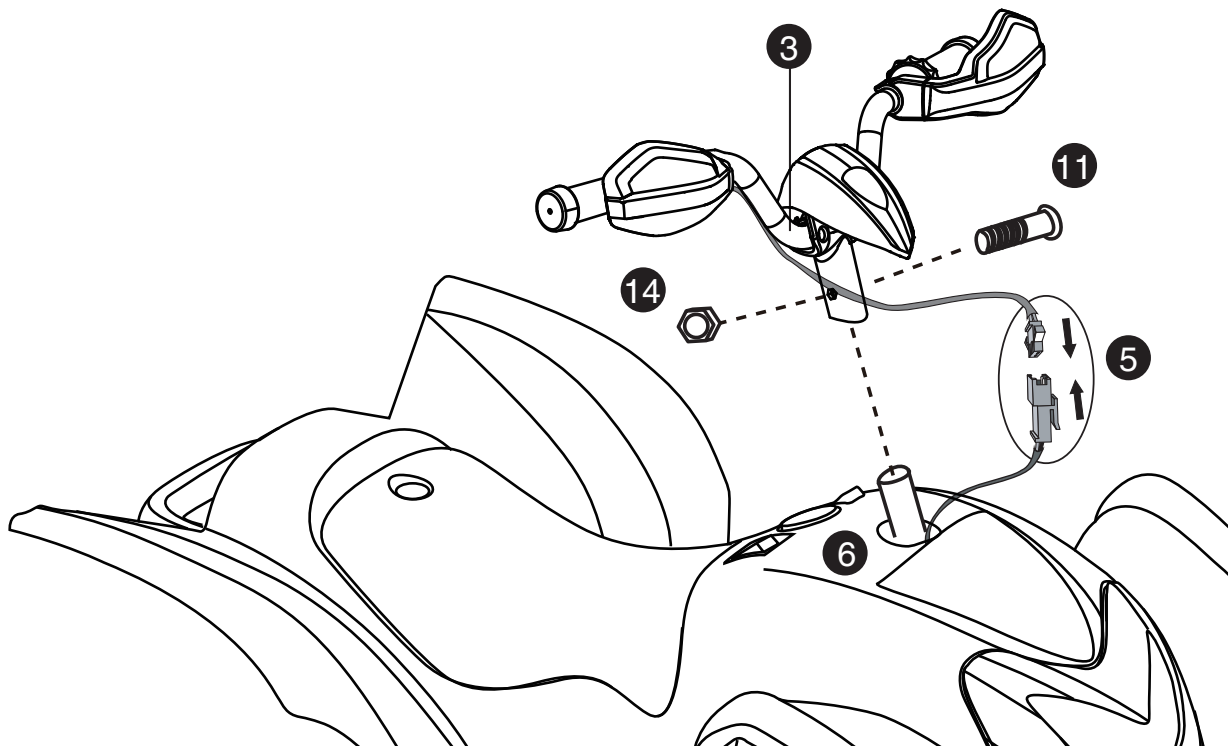


1. Gently flip the vehicle upside down.
2. Insert the straight end of the Steering Rod (6) through the hole in the reinforcement bar and the hole in the vehicle body.
3. Insert the curved end of the Steering Rod into the metal tab of the reinforcement bar.

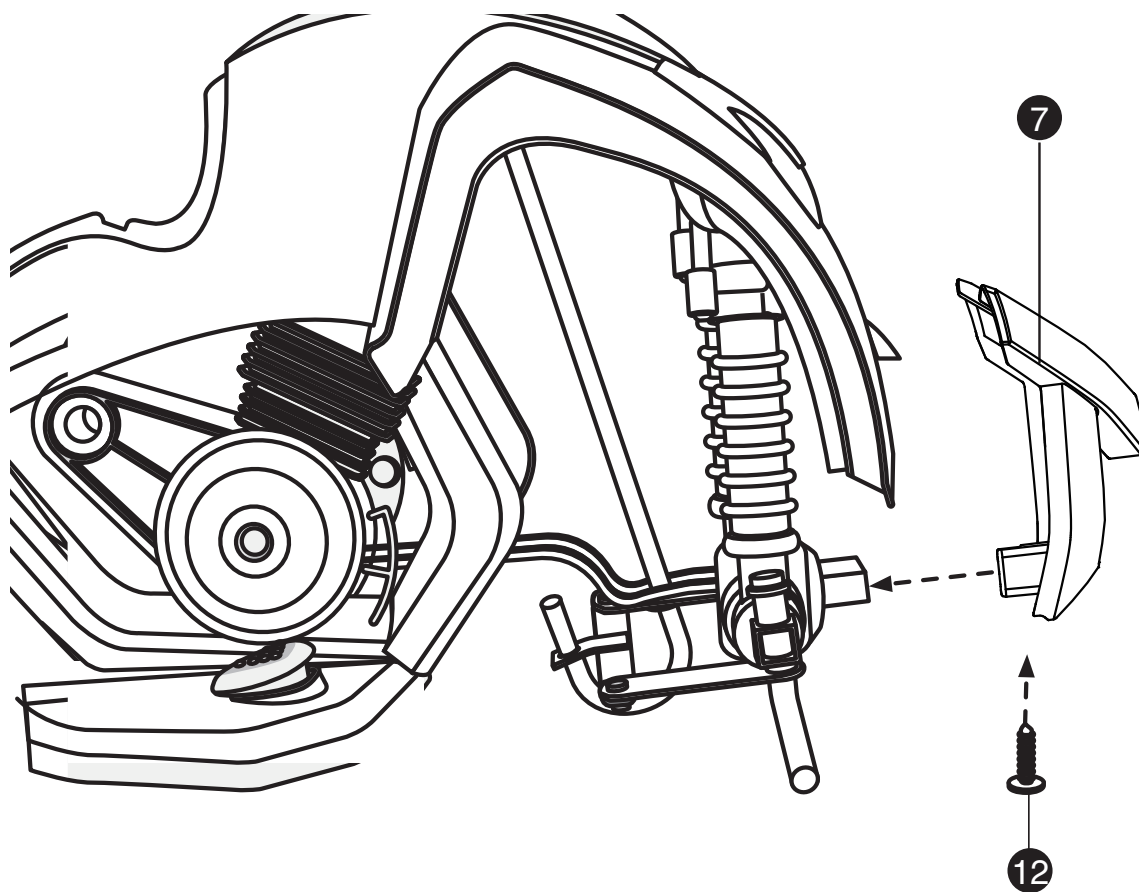
12 Assemble the Handlebar



1. Snap the Hand Guards (4) onto the Handlebar (3), as shown above.

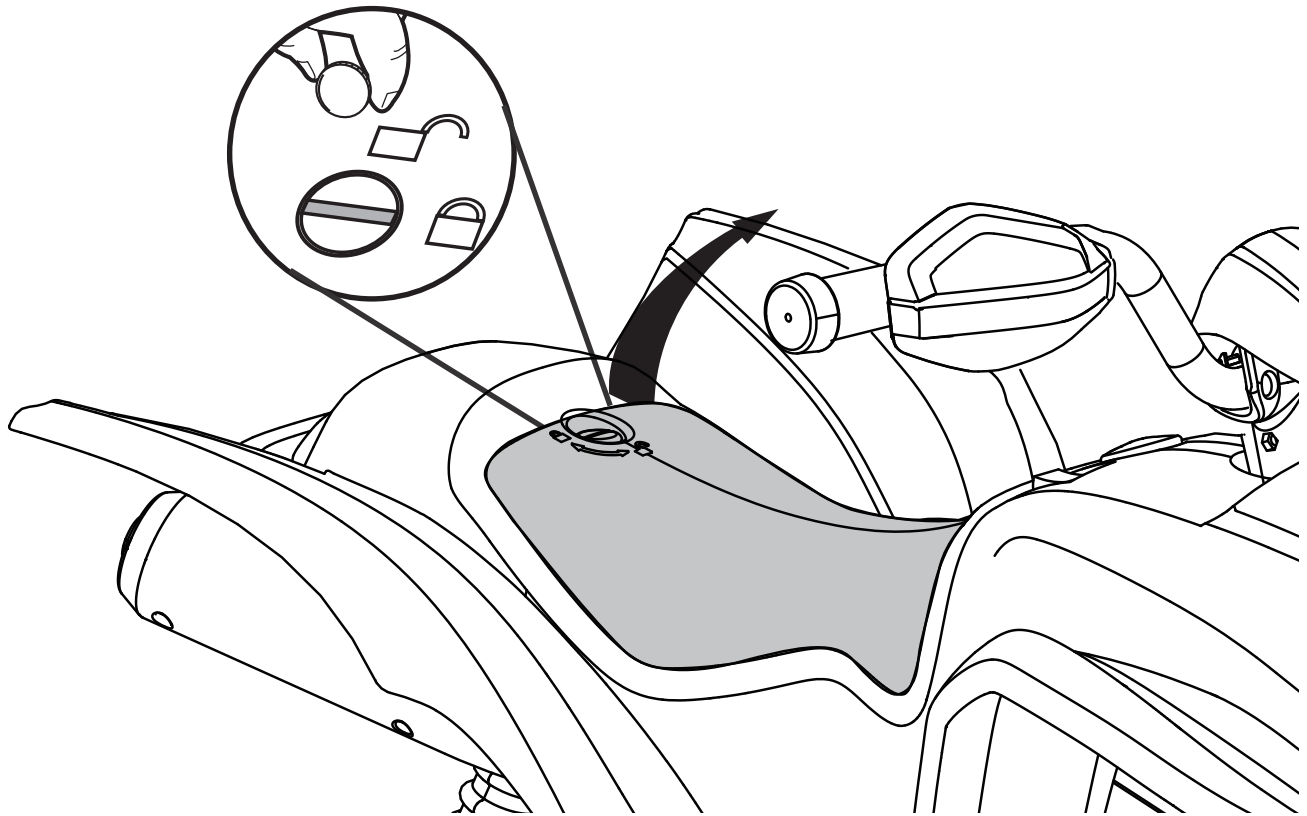


2. Connect the wire of the Handlebar with the wire from the Vehicle Body (5) and gently slide the wire into the vehicle body.
3. Slide the Handlebar (3) onto the Steering Rod (6).
4. Align the hole on the Handlebar with the hole on the Steering Rod. Insert the Handlebar Screw (11) through the holes and fasten with the Handlebar Nut (14) using a screwdriver.

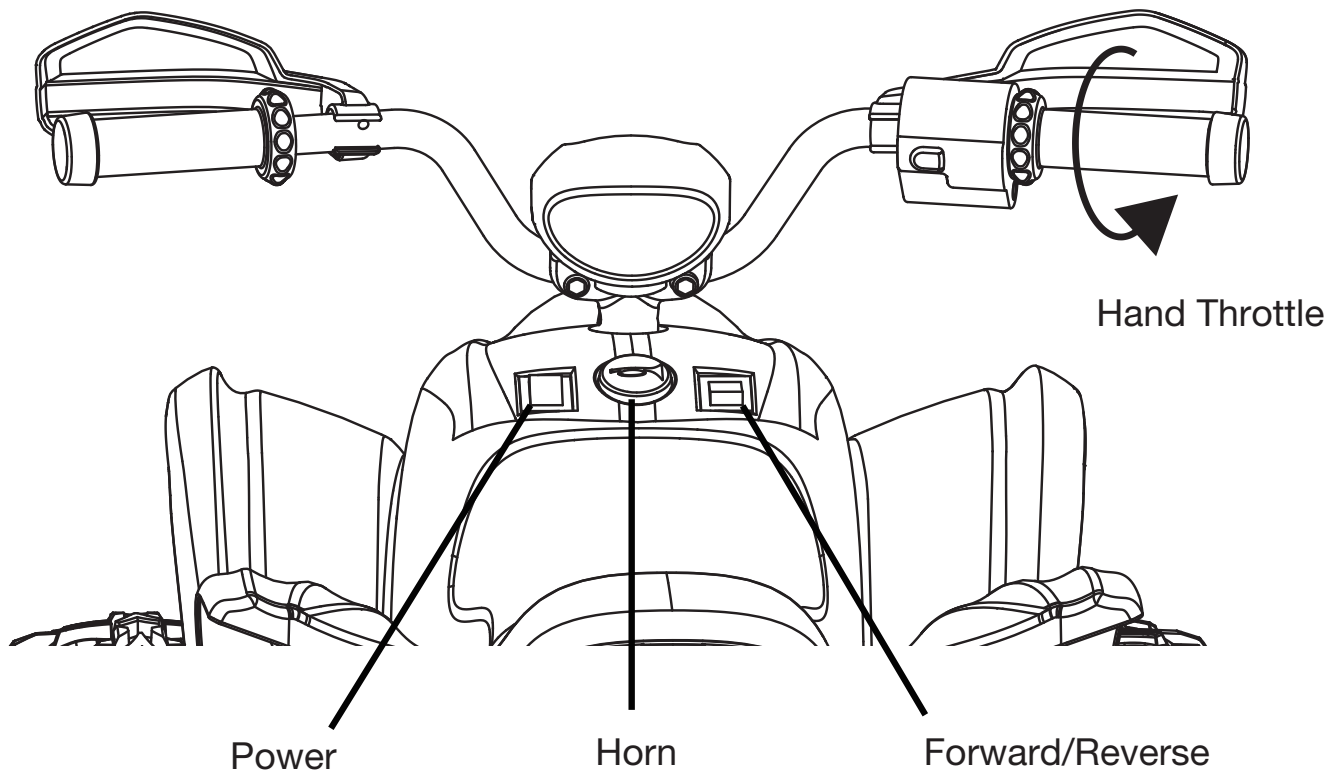


1. Locate the Front Bumper Screw (12) in the Blister Box (18).
2. Place the Front Bumper (7) onto the support bar, aligning the hole on the Front Bumper with the hole on the support bar.
3. Insert the Front Bumper Screw (12) through the holes and fasten with a screwdriver.

14 Attach the Seat



1. Make sure the seat lock is in the unlocked position.
2. Insert the front of the Seat (2) into the slot on the body.
3. Press down on the Seat. Then, use a coin or screwdriver to turn the seat lock to the locked position, as shown above.



To Start:

Turn on the Power Switch, you will hear engine sounds once the vehicle is on.

To go, make sure the Forward/Reverse switch is in the desired direction, then twist the Hand Throttle to move. Release the Hand Throttle to come to a stop.

Headlights:

The headlights illuminate automatically while the vehicle is in motion.

Horn:

Press the Horn to hear fun horn sounds.

Important Battery and Charger Information

- Only an adult who has read and understood the safety warnings may handle and operate the battery and battery charger. Keep away from children.
- Charge the battery for 24 hours before using the vehicle **for the first time**. Do not charge for more than 30 hours.
- Recharge the battery immediately **after each use**. Charge for at least 8-12 hours, but no more than 20 hours.
- Charge the battery at least once a month, even if the vehicle is not used or stored.
- Never leave the battery in a discharged condition.
- Connect the terminals of the battery and charger, then plug the charger into a 120 V AC outlet.
- It is normal for the charger to heat up slightly. If the charger rises above 71°C / 160°F, disconnect the charger and call Customer Service for assistance.
- Keep the charger away from water or excessive moisture to prevent short-circuiting.
- Only use the charger specified for the original item. **Do not charge the battery with any other charger.**
- Do not attempt to recharge non-rechargeable batteries with the original charger.
- **Do not replace the battery with any other battery, or the warranty will be voided.** If you need a replacement battery, see Page 21 for replacement information.
- Remove damaged batteries from the car immediately. Recycle or dispose of the used batteries responsibly.
- Do not short-circuit the supply terminals.
- Do not leave the battery connected to the vehicle for extended periods of time when the vehicle is not being used. Disconnect the battery connector from the engine connector before storing.
- The vehicle is equipped with a thermal fuse to protect the electric circuit. If the vehicle cuts out, turn the vehicle off and on to reset.

- Regularly inspect all vehicle parts to ensure they are in good working condition.
- Regularly inspect the charger, cord, plug and other related parts for damage.
- Remove any damaged parts and immediately contact Customer Service for replacement parts. See Service and Repairs on Page 21 for more information.
- DO NOT operate the vehicle if there are any damaged parts.
- Carefully clean the vehicle with a damp cloth and mild soap. Do not get water in or near any electrical parts. Do not wash the vehicle with a hose.
- Store the vehicle indoors or use a tarp to cover it. Keep the vehicle away from stoves, heaters and other sources of heat.

18 Troubleshooting Guide

Completely read through the manual and troubleshooting guide before contacting Customer Service.

Problem	Potential Cause	Solution
Vehicle does not run.	Low battery	Recharge the battery.
	Tripped thermal fuse	Turn vehicle on and off to reset fuse.
	Loose snap pins	Tighten snap pins.
	Loose wires or loose connectors	Ensure the battery connectors are securely attached. If wires are loose, contact Customer Service.
	Dead battery	Call Customer Service.
	Damaged electrical system	Call Customer Service.
	Damaged motor	Call Customer Service.
Vehicle only runs for a short time.	Undercharged battery	Ensure a secure connection when the battery is recharging. Recharge for at least 8-12 hours.
	Overcharged battery	Never charge the battery for more than 30 hours.
	Worn-out battery	Order a replacement battery from www.rollplay.com
Vehicle runs slowly.	Battery not fully charged	Ensure a secure connection when the battery is recharging.
	Worn-out battery	Order a replacement battery from www.rollplay.com .
	Too much weight on vehicle	Reduce weight on vehicle (35 kg / 77 lb max).
	Harsh conditions	Operate the vehicle on level ground and safe surfaces.

Problem	Potential Cause	Solution
Vehicle needs a push to start.	Loose wires or loose connectors	Ensure the battery connectors are securely attached. If wires are loose, contact Customer Service.
	Dead spot on motor	A “dead spot” means electricity is not being delivered to the terminal. Contact Customer Service.
Difficulty shifting	Attempting to shift while vehicle is moving	Stop the vehicle before shifting.
Motor or gear box making grinding noises	Motor or gear damage	Contact Customer Service
Battery will not recharge.	Charger is not plugged in.	Plug in the charger to a functional wall outlet.
	Charger is not working.	Call Customer Service.
	Loose connector or loose adapter	Check that the connectors are securely plugged into each other.
Battery makes bubbling noise while recharging.	This is normal.	No action required.
Charger is warm.	This is normal.	No action required.

20 **FCC Information**

This device complies with part 15 of the FCC Rules. Operation is subject to the following two conditions: (1) this device may not cause harmful interference, and (2) this device must accept any interference received, including interference that may cause undesired operation.

This equipment has been tested and found to comply with the limits for a Class B digital device, pursuant to Part 15 of the FCC Rules. These limits are designed to provide reasonable protection against harmful interference in a residential installation.

This equipment generates, uses and can radiate radio frequency energy and, if not installed and used in accordance with the instructions, may cause harmful interference to radio communications. However, there is no guarantee that interference will not occur in a particular installation. If this equipment does cause harmful interference to radio or television reception, which can be determined by turning the equipment off and on, the user is encouraged to try to correct the interference by one or more of the following measures:

- Reorient or relocate the receiving antenna.
- Increase the distance between the equipment and the receiver.
- Consult dealer or an experienced radio/TV technician for help.
- Connect the equipment into an outlet on a circuit different from that to which the receiver is connected.
- Check the state or local requirements for the product before using the product.

Caution:

Changes or modifications not expressly approved by the party responsible for compliance could void the user's authority to operate the equipment.

Do not return your product to the store.

Contact Rollplay with questions.

If your product requires replacement parts, please contact Rollplay Customer Service.

Hours: 8 AM - 5 PM EST, Monday - Friday

Phone: 1-888-982-9309

Email: customerservice@rollplay.com

Web: www.rollplay.com

For a list of available replacement parts, please visit www.rollplay.com.

WE WILL REQUIRE PROOF OF PURCHASE. Please save your sales receipt and register your product at www.rollplay.com.

22 Warranty

Rollplay 12-Volt Limited Warranty

- One-year limited warranty (vehicle only) from the date of purchase with proof of purchase from a Rollplay certified retailer. This one-year limited warranty covers the ride-on vehicle against defects in materials and workmanship to the original purchaser. **Proof of purchase receipt from a Rollplay certified retailer is required.**
- Six-month limited warranty on the 12-Volt battery with proof of purchase from a Rollplay certified retailer. Rollplay ensures the original 12-Volt battery is warranted for 6 months from initial purchase of the vehicle from a certified retailer. **Proof of purchase receipt required.**
- This warranty covers normal use and does not cover the Rollplay vehicle or battery if deemed damaged by unreasonable use, modification, neglect, accident, abuse, misuse, improper service or other causes not arising out of defects in materials or workmanship. Evidence of any attempt at Customer repair will void this warranty.
- This warranty does not cover, and is not intended to exclude any liability on the part of Rollplay, whether under this warranty or implied by law for any indirect or consequential damages for breach of warranty. Some states may not allow the exclusion or limitation, so this limitation may not apply to you.

Should you need service or assistance with your vehicle during the warranty period:

- Please do not return vehicle to the store.
- Consult the troubleshooting guide in this manual and online at www.rollplay.com
- Call Rollplay Customer Service at 1-888-982-9309

Note:

This warranty gives you specific legal rights. You may also have other rights that may vary from state to state.

Please save your original sales receipt.

Fill out the form below and mail it to:

Rollplay
Attn: ParentLink
1801 Commerce Dr
Piqua, OH 45356

OR fill out the form online at **www.rollplay.com**

We will use the information provided only for your warranty. We will not sell, rent or share your personal information.

Product Registration

First Name: _____ Last Name: _____ Title: _____

Address: _____

City: _____ State: _____ Zip Code: _____

Email: _____ Phone: _____

Date of Purchase: _____

The following product information is on the cover of the owner's manual.

Product Name: _____ Model Number: _____

Serial Number: _____ Retailer Place of Purchase: _____

