

67106

STEELMAN®

77" CONTRACTOR MITER SAW WORKSTATION OPERATOR'S MANUAL



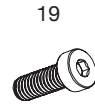
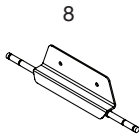
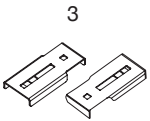
⚠ CAUTION: To reduce the risk of injury, user must read and understand this operator's manual. Save these instructions for future reference.

TABLE OF CONTENTS

PARTS LIST AND SPECIFICATIONS.....	3-4
SAFETY AND WARNINGS	5-6
SAFETY INSTRUCTIONS FOR POWER TOOLS.....	5
SAFETY INSTRUCTIONS FOR MITER SAW STANDS.....	6
ASSEMBLY INSTRUCTIONS	6-11
ATTACHING THE WHEELS.....	6
ATTACHING THE AXLE PLATE.....	7
ATTACHING THE PULL HANDLE	7
PREPARING THE STAND.....	7-8
ASSEMBLING AND INSTALLING MATERIAL WORK SUPPORTS.....	8
ATTACHING YOUR MITER SAW OR OTHER BENCHTOP POWER TOOL.....	9
OFFSET MOUNTING.....	10
MOUNTING THE MITER SAW TO THE STAND	10-11
PREPARING FOR TRANSPORT AND STORAGE.....	11-13
REMOVING SAW FROM STAND.....	11
TRANSPORT AND STORAGE	12
TOOL MOUNT ADJUSTMENT SCREW.....	12-13
GENERAL MAINTENANCE.....	13
WARRANTY.....	13
NOTES.....	14-15

PARTS LIST


#	DESCRIPTION	QTY.		#	DESCRIPTION	QTY.
1	Miter Saw Stand	1		11	Knobs M8*25	4
2	Rapid Tool Mount Clamp	2		12	Knob Nuts M6	2
3	Offset Mounting Bracket	2		13	Carriage Bolt M8*55	2
4	Work Support	2		14	Carriage Bolt M8*20	2
5	Work Stop	2		15	Nut M8	10
6	Material Support Receiver	2		16	Carriage Bolt M8*60	4
7	Wheel	2		17	Washer #8	10
8	Axle Plate	1		18	Spring Washer #8	10
9	Handle	1		19	Bolt M8*25	4
10	Knobs M8*35	2		20	C-Clip	4





SPECIFICATIONS	
HEIGHT	31.5"
WIDTH	77"
DEPTH	24"
WEIGHT	42 lbs.
LOAD CAPACITY	500 lbs.

SAFETY AND WARNINGS

Reference this manual for all safety warnings and precautions, operating and maintenance procedures, parts list and diagrams. Keep your invoice with this manual and write your invoice number on the inside of the front cover. Keep the manual and invoice in a safe, dry place for future reference.

 **WARNING:** Be sure to read and understand all safety instructions in this manual, including all safety alert symbols such as “danger”, “warning”, and “caution” before using this tool.

 **WARNING:** To reduce the risk of personal injury, read and understand the instructions. Legs must be fully open. Be sure to read and understand all safety instructions in this manual, including all safety alert symbols such as “danger”, “warning”, and “caution” before using this tool.

 **CAUTION:** Do not apply weight in excess of 500 lbs. (226.8 kg) of uniformly distributed load on stand. Do not use as a step ladder or standing platform.

SAFETY INSTRUCTIONS FOR POWER TOOLS

Using power tools of any kind can be dangerous if safe operating procedures are not followed. Recognizing the hazards of each tool and using them with respect and caution will considerably limit the possibility of personal injury. However, if safety precautions are ignored, personal injury will likely result.

1. Always use common sense - your personal safety is your responsibility.
2. Know your power tool. Read and understand the product manual and observe the warnings and instruction labels affixed to the tool.
3. Properly ground all tools.
4. Keep guards in place.
5. Remove adjusting keys and wrenches.
6. Keep work area clean and dry.
7. Keep children away.
8. Never leave running machines/tools unattended.
9. Disconnect tools from service.
10. Use correct tools for the job.
11. Never force a tool.
12. Wear safety apparel.
13. Wear safety glasses/goggles.
14. Never stand or sit on tool.
15. Replace damaged components immediately.
16. Make sure your work platform is sufficiently sturdy to do the specific job at hand.
17. Properly anchor blade for job being done.
18. Use correct blade for job being done.
19. Think safety. Safety is a combination of operator awareness, common sense and alertness at all times.

SAFETY INSTRUCTIONS FOR MITER SAW STANDS

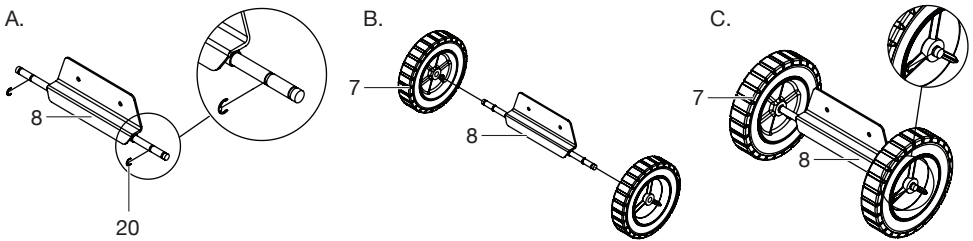
1. Use caution when folding or unfolding legs to limit any finger pinch points.
2. Place stand on flat and level surface to keep from rocking or tipping.
3. Make sure that work support extensions (if included) are within safe operating limits, and are properly locked in place before using the tool. Do not exceed the rated capacity on main frame table.
4. Test the setup for delivery before proceeding with work.
5. Be sure the Miter Saw Stand (1) is tightened securely at all mountings before folding the work station for transport.
6. Use only the Rapid Tool Mount Clamps (2) included with this kit featuring the J-Lock™ Clip. Without this unique clip, it is possible that your tool could become dislodged from the mount if bumped.

ASSEMBLY INSTRUCTIONS

ATTACHING THE WHEELS (FIG 1.A-C)

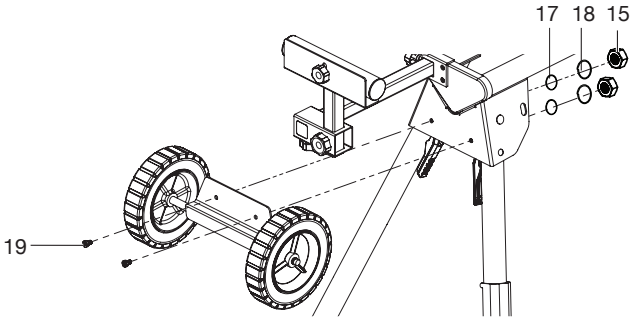
1. Using pliers, squeeze a C-Clip (20) over the inner groove closest to the Miter Saw Stand (1).
2. Place the Wheel (7) onto the Axle Plate (8) and secure it using another C-Clip toward the end of the Axle.
3. The C-Clips should snap into place and hold the Wheel onto the Axle.

FIG. 1

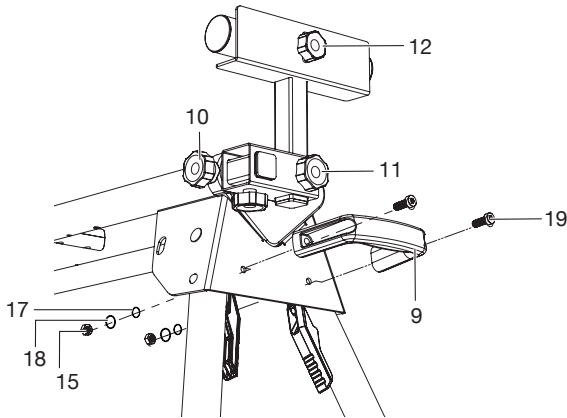


ATTACHING THE AXLE PLATE (FIG 2)

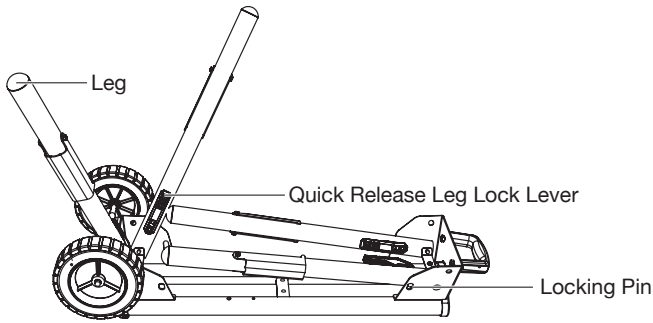
1. Place two (2) M8*25 Carriage Bolts (19) through the holes in the Axle Plate (8).
2. Place the Axle Plate onto the end of the Miter Saw Stand (1), making sure that the bolt nuts run through the holes on the Miter Saw Stand.
3. Place the Washer #8 (17) and Spring Washer #8 (18) over each bolt on the back side of the Miter Saw Stand.
4. Lift the Miter Saw Stand to an upright position.
5. Tighten Nut M8 (15) over the washer until secure.

FIG. 2**ATTACHING THE PULL HANDLE (FIG 3)**

1. Place two (2) M8*25 Carriage Bolts (19) through the holes in the plastic Handle (9).
2. Place the Handle onto the end of the Miter Saw Stand (1) and make sure the M8*25 Carriage Bolts pass through the holes in the body.
3. Place the Washer (17) and Spring Washer (18) over each bolt exposed on the back side of the Miter Saw Stand.
4. Lift the Stand and place it in an upright position.
5. Tighten Nut M8 (15) over the washer until secure.

FIG. 3**PREPARING THE STAND (FIG 4)**

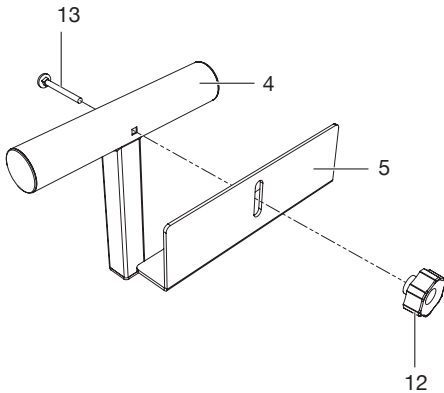
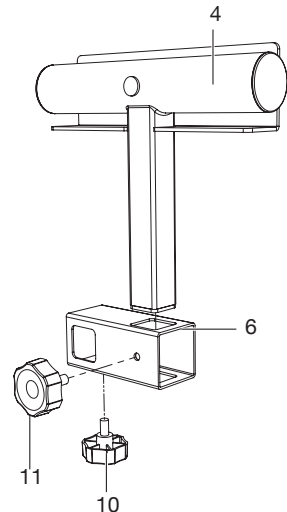
1. Lay the stand's top surface down on the floor with the folded legs on top.
2. Press the Quick Release Leg Lock Lever and rotate that leg up until the locking pin clicks into place.
3. Repeat step 2 with the remaining three (3) legs.
4. Lift the Stand and place it in an upright position.
5. Check to ensure the stand is stable and that all the legs have the locking pins engaged.

FIG. 4

ASSEMBLING AND INSTALLING MATERIAL WORK SUPPORTS (FIG 5 & 6)

1. Slide an M8*55 Carriage Bolt (13) through the square hole in the Work Support (4) and extend through the other side.
2. Place the Work Stop (5) over the end of the bolt.
3. Thread a Knob Nut M6 (12) over the end of the bolt and tighten to secure.
4. Slide the work support rail through the hole in the top of the work support mounting bracket.
5. Insert Knob M8*25 (11) through the small hole on the side of the Material Support Receiver (6) and tighten to secure.
6. Slide the Material Support Receiver over the extension rail (stored inside the mounting beams of the miter saw workstation) so that the extension rail extends through the opening in the receiver.
7. Thread Knob M8*35 (10) into the hole in the bottom of the Material Support Receiver and tighten to secure.

NOTE: There are only two (2) M8*35 Knobs. These have slightly longer shafts than the four (4) M8*25 Knobs, which are threaded into the frame of the workstation to secure the rail.

FIG. 5**FIG. 6**

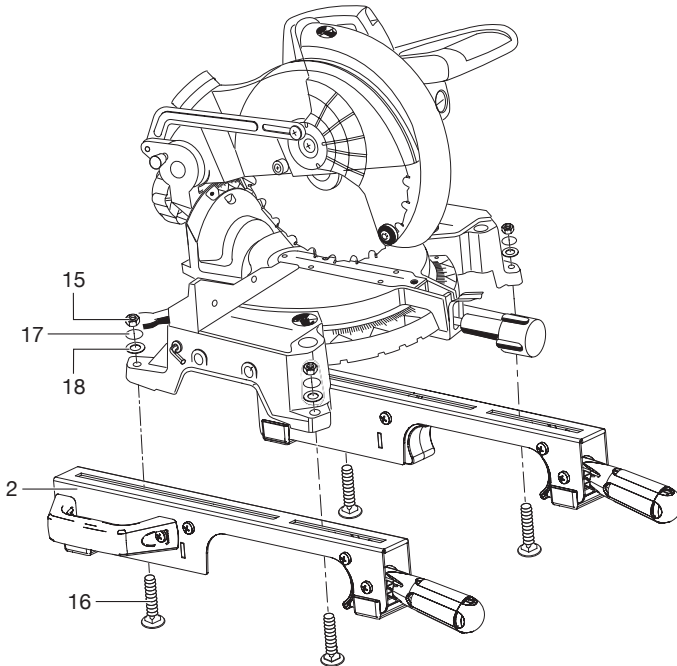
ATTACHING YOUR MITER SAW OR OTHER BENCHTOP POWER TOOL (FIG 7)

Various bench top tools can be used with your STEELMAN® 77" Contractor Miter Saw Workstation by attaching them to the Rapid Clamp Tool Mounts (2). Always position the saw to achieve maximum balance and stability. All four (4) corners of the saw must be bolted to the Tool Mounts before use. Make sure bolts do not extend above the table of the miter saw.

1. Unplug the saw and lock the saw arm in the down position.
2. Place a Tool Mount (2) underneath the saw, aligning the mounting holes on the miter saw base with the slot in the top of the Tool Mount.
3. Feed a Carriage Bolt M8*60 (16) up through both the Tool Mount and a mounting hole in the saw.
4. Secure in place using a Washer #8 (17), Spring Washer #8 (18) and Nut M8 (15).
5. Repeat through the other end of the Tool Mount.
6. Place the second Tool Mount underneath the other side of the saw, aligning the mounting holes on the miter saw base with the opening in the Tool Mount.
7. Install Carriage Bolts as previously described in Step 3.
8. After making sure both Tool Mounts are parallel to each other, finger tighten all four (4) nuts to hold in position.

NOTE: If the saw has holes that do not line up with the slots in the Tool Mounts, use the Offset Mounting Brackets (3).

FIG. 7

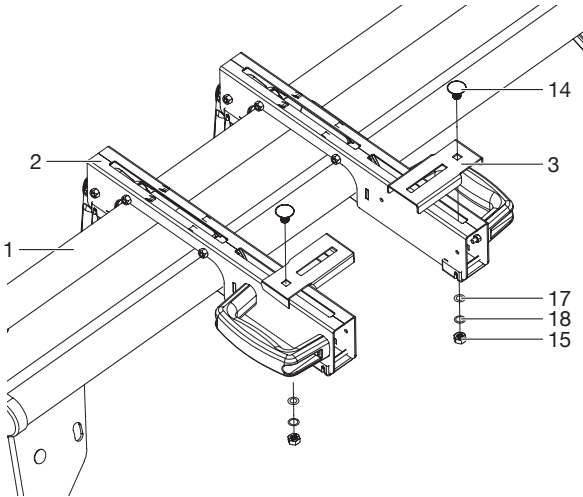


OFFSET MOUNTING (FIG 8)

Offset Mounting Bracket for miter saws and/or power tools with an irregular mounting hole pattern.

1. Secure Offset Mounting Brackets (3) as shown using the supplied M8*20 Carriage Bolts (16). These brackets can be used on the front or rear of the Rapid Clamp Tool Mounts (2) to accommodate your specific power tool.

FIG. 8



MOUNTING THE MITER SAW TO THE STAND (FIG 9)

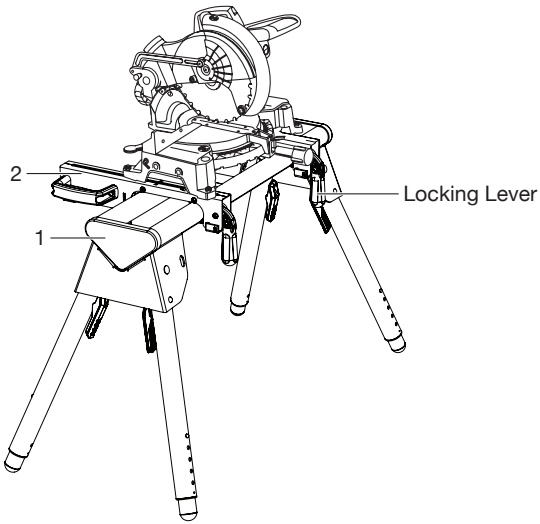
Use the handles located at the rear of the tool mounts to aid in installing or removing saw and tool mount assembly.

1. Lift the saw and Tool Mount Assembly (2), allowing the assembly to tilt slightly toward your body.
2. While still tilted toward you, hook the front edge of the Tool Mount Assembly onto the front rail of the Miter Saw Stand (1).
3. Lower the Tool Mount Assembly to allow the rear edge of the tool mount to seat fully over the rear rail.
4. Lock the Tool Mounts in position by lowering the locking levers.
5. Snap the J-Lock™ closed (around the beams) to prevent your mounted tool from detaching from the STEELMAN® Contractor Miter Saw Workstation.

NOTE: Continue to hold the tool mount assembly with one hand until both levers are securely locked.

6. Check position and adjust if necessary to make sure the weight of the saw is evenly balanced over the rails.
7. Ensure the saw is seated and locked in position, then securely tighten the four (4) nuts holding the saw to the Tool Mounts.

FIG. 9

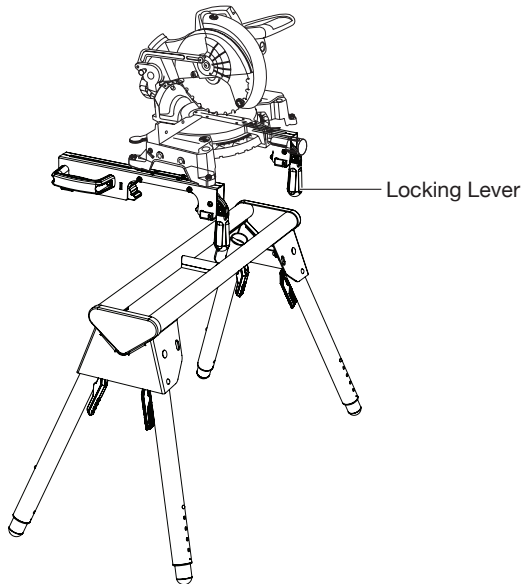


PREPARING FOR TRANSPORT AND STORAGE

REMOVING THE SAW FROM THE STAND (FIG 10)

1. Raise the locking levers to unlock the saw and Tool Mounts.
2. Unsnap the J-Lock™ clips from around the mounting beams to allow your tool to separate from your STEELMAN® Contractor Miter Saw Workstation.
3. Lift away from the rear rail of the stand to disengage.
4. With the assembly tilted slightly toward you, lift the assembly to disengage from the front rail of the workstation.

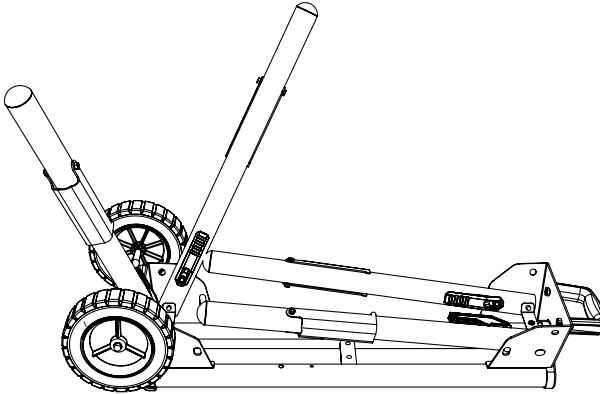
FIG. 10



TRANSPORTING AND STORING (FIG 11)

1. Before storing or transporting, make sure all attachments are secure and bench top tool is removed.
2. Collapse legs and make sure they are locked into the up position.
3. Use the handle that is located on the end of the product for transporting.
4. Pull up on the handle and tilt workstation until weight is distributed evenly onto wheels.

FIG. 11



TOOL MOUNT ADJUSTMENT SCREW

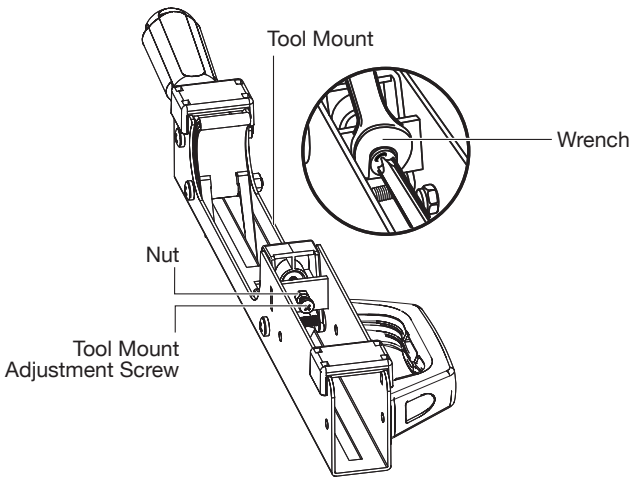
Most plastic tool mounts are designed to fit snugly over the stand rails. With the locking levers in the lowered (locked) position, you should not be able to remove the saw and tool mount assembly from the rails. If the saw and tool mount can be removed from the rails when the levers are locked, the tool mount adjustment screws need to be tightened. If the saw and the tool mount assembly will not fit over both rails, the bracket adjustment screws need to be loosened.

NOTE: The saw should be removed from the tool mounts before attempting to tighten or loosen the tool mount adjustment screws.

TO ADJUST (FIG 12)

1. Use a wrench to slightly loosen the nut.
2. Turn the screw with a Phillips screwdriver. Rotate clockwise if the tool mount assembly needs to be tightened or counter-clockwise if the assembly needs to be loosened.
3. Install the tool mount on the STEELMAN® 77" Contractor Miter Saw Workstation rails and lower the locking lever to check the adjustment.
4. When the correct position is achieved, tighten the nut with a 10mm open-ended wrench to secure.
5. Repeat steps 1-4 to attach the second tool mount.

FIG. 12



GENERAL MAINTENANCE

Avoid using solvents when cleaning plastic parts. Most plastics are susceptible to damage from various types of commercial solvents and may be damaged by their use. Use clean cloths to remove dirt, dust, oil, grease, etc.

WARRANTY



1 YEAR LIMITED WARRANTY

This STEELMAN® product is backed by a 1 Year Limited Warranty. This warranty covers manufacturer defects and workmanship. The warranty excludes misuse or abuse and normal wear and tear. Exclusion is not allowed in some states and may not apply. This warranty gives you specific legal rights, and you may have other rights, which vary from state to state.

For questions / comments, technical assistance or repair parts, Please call toll free at: 1-855-706-1550 (M-F 6am - 4:30pm PST)

Before sending a unit back for repair, an RMA (return materials authorization) number must be obtained and written on the outer shipping box. Please submit a ticket online at <http://www.steelmantools.com/contacts> to receive an RMA number. We will determine if the unit needs to come in for repairs or replacement. Warranty claims that cannot be processed through the point of purchase and any other product related questions should be addressed directly to JS Products.



STEELMAN®

08.28.2020

JS PRODUCTS • 6445 MONTESSOURI STREET • LAS VEGAS, NV 89113
CUSTOMER SERVICE: 1-855-706-1550 • WWW.STEELMANTOOLS.COM