

## Commercial Flushometer Floor-Mounted Toilet – 1.0/1.28/1.6 GPF

### FEATURES

- TORNADO FLUSH® is a sustainable, high-performance system that effectively removes waste, utilizing 360° of cleaning power to scour the bowl and rim
- Floor-mounted
- Elongated front bowl
- Optional CEFIONTECT® ceramic glaze minimizes waste from sticking to porous ceramic surfaces
- Clear glazed trapway coating
- 10"-12" rough-in

### MODELS

- **CT725CU**  
Commercial floor-mounted toilet, less seat
- **CT725CUG**  
Commercial floor-mounted toilet with CEFIONTECT ceramic glaze, less seat

### ADDITIONAL ITEMS

- SC534 seat
- SC134 seat

ECOPOWER®		Manual	
Exposed		Exposed	
*TET1UB32#CP	1.0 GPF	—	
◆TET1UA32#CP			
*TET1LB32#CP	1.28 GPF	TMT1LN32#CP	1.28 GPF
◆TET1LA32#CP			
TET1GB32#CP	1.6 GPF	TMT1NNC-32	1.6 GPF
◆TET1GA32#CP			
Exposed			
*TET6UB32#CP	1.0 GPF		
◆TET6UA32#CP			
*TET6LB32#CP	1.28 GPF		
◆TET6LA32#CP			
TET6GB32#CP	1.6 GPF		
◆TET6GA32#CP			
Concealed 14" x 12"			
*TET2UB32#SS	1.0 GPF		
◆TET2UA32#SS			
*TET2LB32#SS	1.28 GPF		
◆TET2LA32#SS			
TET2GB32#SS	1.6 GPF		
◆TET2GA32#SS			
Concealed 4" x 4"			
*TET3UB32#SS	1.0 GPF		
◆TET3UA32#SS			
*TET3LB32#SS	1.28 GPF		
◆TET3LA32#SS			
TET3GB32#SS	1.6 GPF		
◆TET3GA32#SS			

\*WaterSense Listed

◆ Limited Inventory



Flush valve sold separately

 TORNADO FLUSH  CEFIONTECT

### COLORS/FINISHES

- #01 Cotton

### PRODUCT SPECIFICATION

The floor-mounted, low consumption siphon jet flushing toilet shall be 1.0, 1.28, or 1.6 GPF (3.8, 4.8, or 6.0 LPF) when paired with a flush valve of corresponding flush volume. Toilet shall have optional CeFiONtect ceramic glaze. Toilet shall be TOTO Model CT725CU(G)\_\_\_\_\_.

### CODES/STANDARDS

- Meets and exceeds ASME A112.19.2/CSA B45.1
- Certifications: IAPMO(cUPC), State of Massachusetts, City of Los Angeles, and others
- Code compliance: UPC, IPC, NSPC, NPC Canada, and others
- Complies with CA Prop 65 warning requirements
- To complete a WaterSense listed combination, the bowl must be paired with a flush valve which is EPA WaterSense listed



# CT725CU(G)

## Commercial Flushometer Floor-Mounted Toilet – 1.0/1.28/1.6 GPF

### SPECIFICATIONS

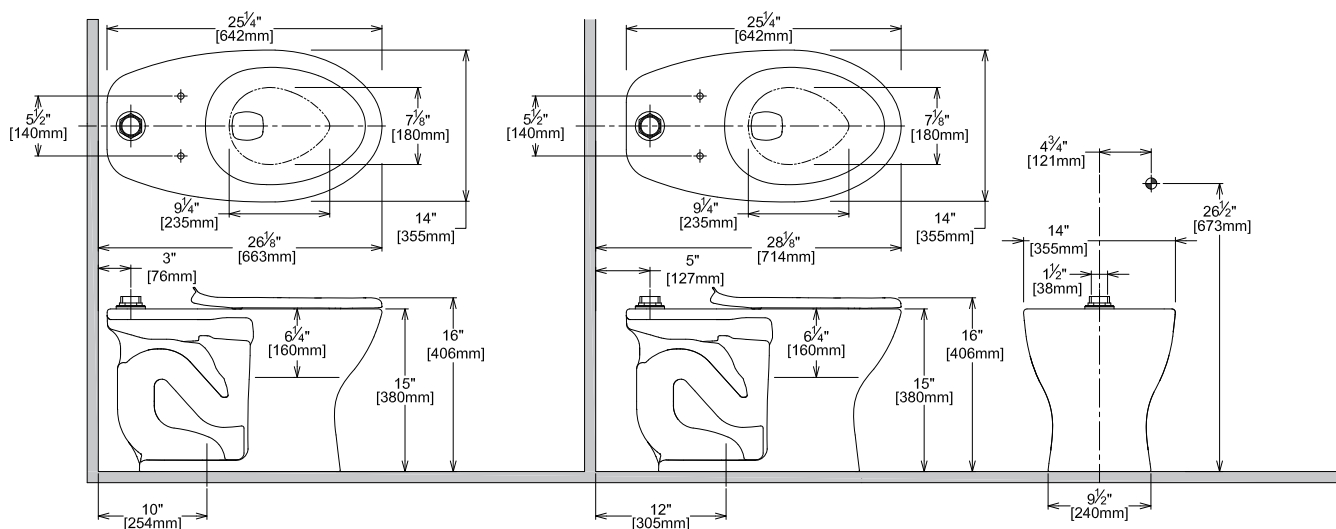
<b>Water Use</b>	1.0/1.28/1.6 GPF (3.8/4.8/6.0 LPF)
<b>Flush System</b>	Siphon Jet Flushing Action
<b>Water Surface</b>	9-1/4" x 7"
<b>Water Pressure</b>	Min: 25 psi (Flowing) Max: 80 psi (Static)
<b>Min. Flow Rate</b>	24 GPM
<b>Trap Diameter</b>	2-1/8"
<b>Trap Seal</b>	2-1/8"
<b>Material</b>	Vitreous China
<b>Warranty</b>	One Year Limited Warranty
<b>Shipping Weight</b>	55 lbs.
<b>Shipping Dimensions</b>	27-1/4" L x 15-3/4" W1 x 10-5/8" W2 x 17-7/8" H

### INSTALLATION NOTES

Spuds are unique for TOTO product. For replacement spuds, contact TOTO for part number THU073R.

Can be used with exposed or concealed top inlet flush valves.

### DIMENSIONS



**TOTO®**

These dimensions and specifications are subject to change without notice