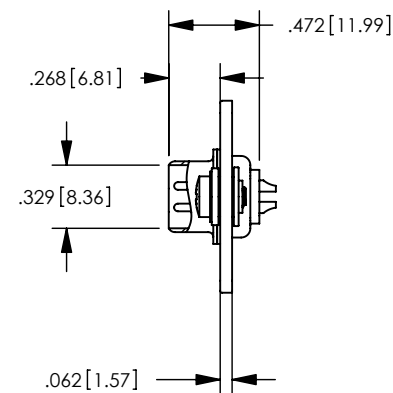
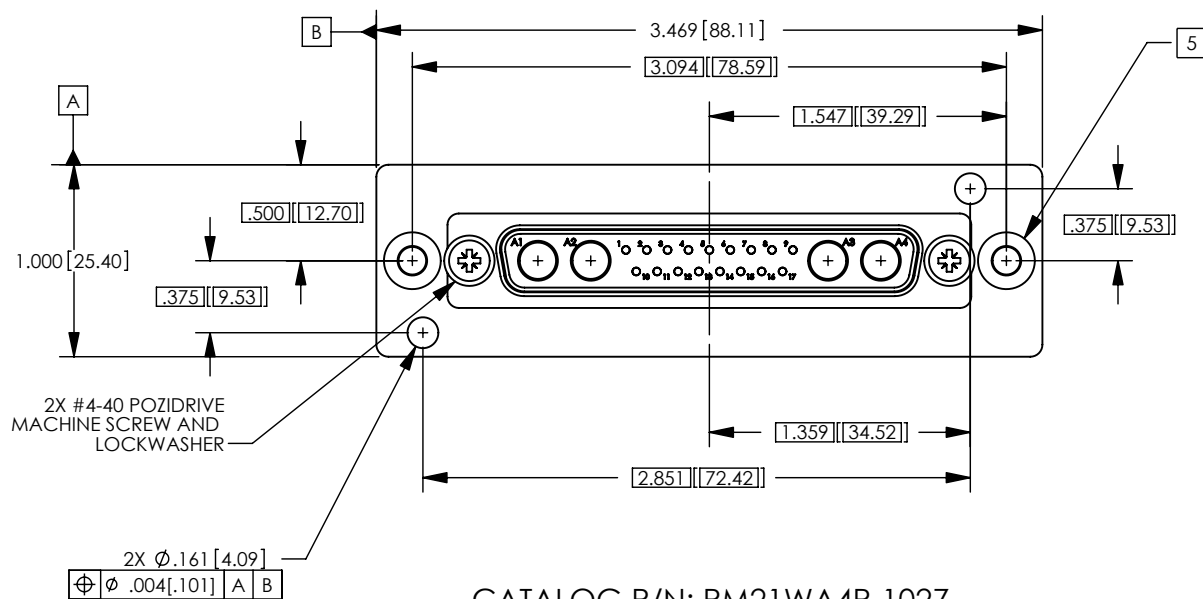
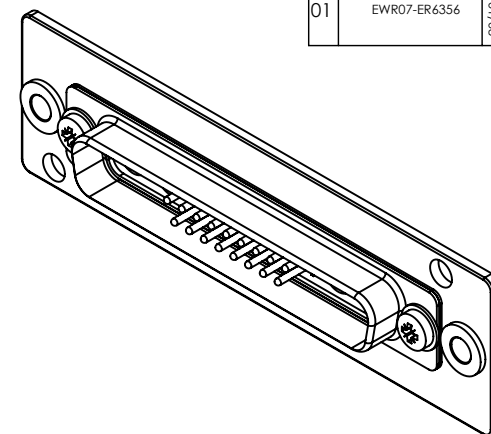
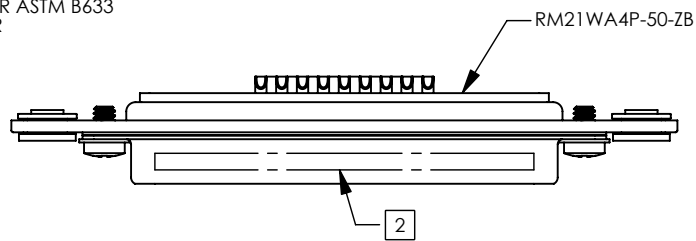


1. FOR GENERAL SERIES SPECIFICATIONS, SEE SD10-0000.

3. MATERIAL SPECIFICATIONS:  
MOUNTING PLATE: COLD ROLLED STEEL PER ASTM A620  
CONNECTOR: SEE CONNECTOR SALES DRAWING FOR  
CONNECTOR SPECIFICATIONS


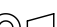
4. FINISH SPECIFICATIONS:  
MOUNTING PLATE: YELLOW CHROMATE OVER ZINC PER ASTM B633  
CONNECTOR: SEE CONNECTOR SALES DRAWING FOR  
CONNECTOR SPECIFICATIONS

5 FLOAT BUSHING ALLOWS .036 [.91 TRANSVERSE,  
.018 [.46] AXIAL FLOAT



CATALOG P/N: RM21WA4P-1027

| REV | DESCRIPTION  | BY<br>DATE      | APPR<br>DATE    |
|-----|--------------|-----------------|-----------------|
| 01  | EWR07-ER6356 | RDG<br>02/01/08 | WFM<br>02/07/08 |

|  |  |          |  |  |  |          |  |
|--|--|----------|--|--|--|----------|--|
| PER ASME Y14.5M-1994<br>UNLESS OTHERWISE SPECIFIED:<br>DIMENSIONS ARE IN INCHES [MM]<br>TOLERANCES:<br>DECIMAL: .XX [X.X] $\pm .01$ [0.3]<br>.xxx [x.xx] $\pm .005$ [0.13]<br>.xxxx [x.xxx] $\pm .xxx$<br>ANGLES: $\pm 2^\circ$ SCALE: 1:1 |  |          |  |  <b>Winchester Electronics</b><br>Winchester Electronics Corporation<br>62 Barnes Industrial Road North<br>Wallingford, Connecticut 06492 |  |          |  |
| CUSTOMER DRAWING   |  |          |  |  PLATE MOUNTED 21WA4P   |  |          |  |
| DRAWN  |  | DATE     |  | APPROVED   |  | DATE     |  |
| RDG  |  | 02/01/08 |  | WPM  |  | 02/07/08 |  |
| APPROVED   |  | DATE     |  | APPROVED   |  | DATE     |  |
| DO   |  | 02/07/08 |  | DC   |  | 02/07/08 |  |
| <b>A</b>   |  |          |  | SDRM21WA4P-1027  |  |          |  |
|  |  |          |  | SHT 1 OF 1   |  | REV 01   |  |