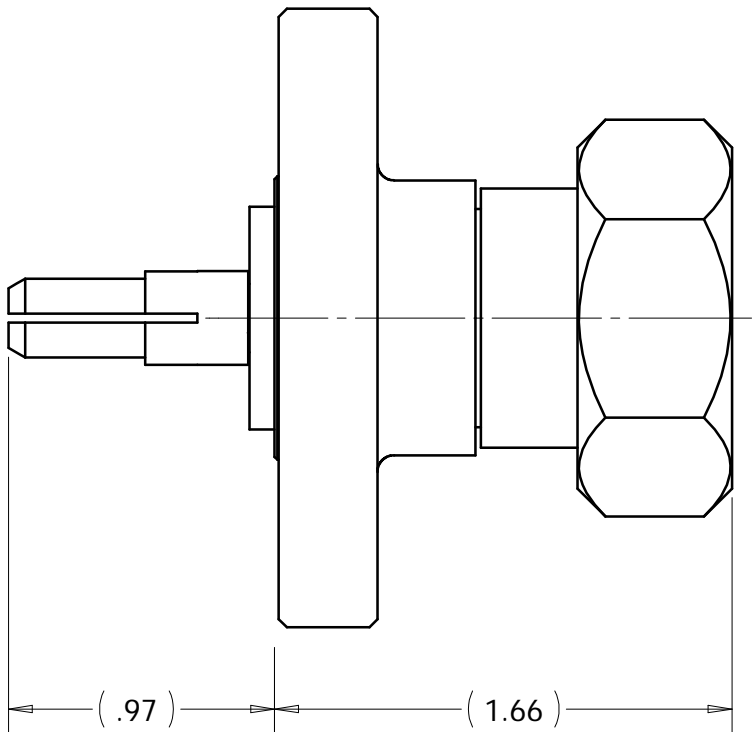
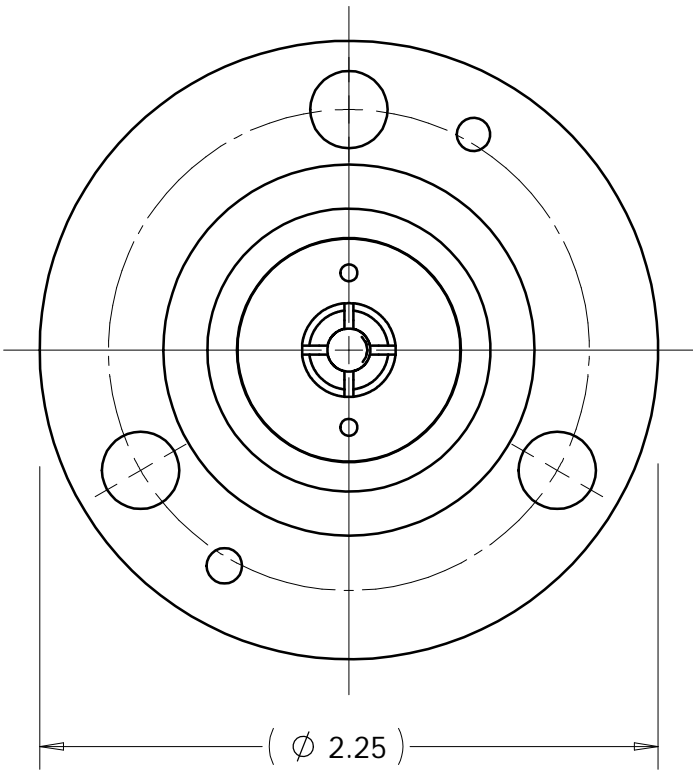
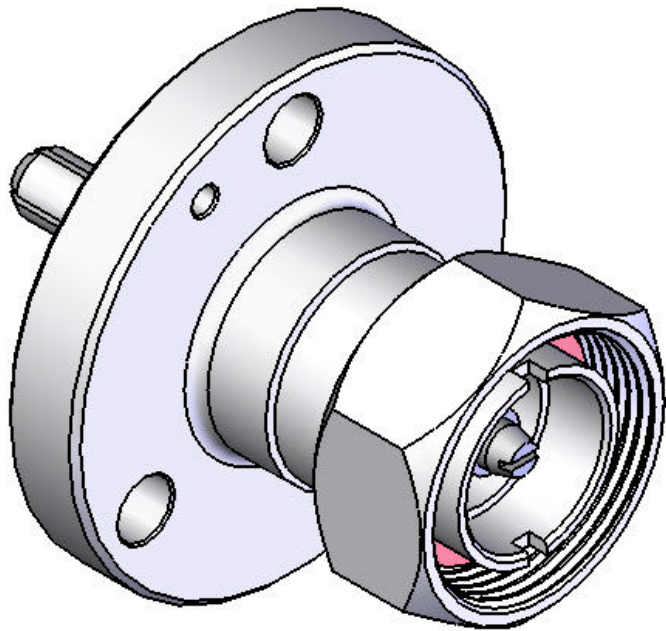


This document, including the design, configuration and mechanical features revealed herein are the sole, confidential and proprietary property of TRU Corporation. Reproduction or use thereof, in whole or part, is prohibited without the prior written consent of TRU Corporation.

REV.	DESCRIPTION	DATE	APPROVED
-	ORIGINAL ISSUE	6/3/94	RMK
A	ECO-2173	3/25/03	RMK
B	ECO-3031 and redrawn	2/2/06	DA



ENGINEERING DATA:

ELECTRICAL:

IMPEDANCE: 50 OHMS NOMINAL  
FREQUENCY RANGE: UP TO 6 GHz  
WORKING VOLTAGE: 2,700 VOLTS MAX.

MECHANICAL:

INTERFACE: 7-16(male) PER IEC-169-4  
EIA-875(fixed male) PER 7/8EIA STANDARD  
WEIGHT: 0.64 LBS.

MATERIAL:


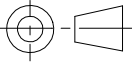
INSULATORS: PTFE (Teflon)  
CENTER CONDUCTORS: BERYLLIUM COPPER & BRASS  
BODY & COUPLING NUT: BRASS

FINISH:

ALL METAL PARTS: SILVER PLATED

NOTES:

1. UNLESS OTHERWISE SPECIFIED,  
ALL DIMENSIONS ARE REFERENCE ONLY.

MATERIAL	DO NOT SCALE DRAWING		DRAWN WWW	DATE 6/3/94	 <b>TRU CORPORATION</b> 245 LYNNFIELD STREET, PEABODY, MA 01960 The Custom Interconnect Leader™		
	UNLESS OTHERWISE SPECIFIED: DIMENSIONS ARE IN INCHES		ENG APPR. KOCH	DATE 6/3/94			
	TOLERANCES: FRACTIONS: ±1/64 .XX : ±.01 .XXX: ±.005 ANGLES: ±1/2° MACHINED SURFACES:		MFG APPR.	DATE			
	COMMENTS:		OTHER APPR. RMK	DATE 6/3/94	TITLE: CONNECTOR, COAXIAL, RF 7-16(m) to 7/8-50 EIA(m) ADAPTER		
surface area: sq inch		weight: 0.629 lbs	THIRD ANGLE PROJECTION 		SIZE <b>B</b>	DWG. NO. TRU-7616	REV <b>B</b>
			CAGE CODE: 92180		SCALE: 1.5:1	SHEET 1 OF 1	