

Catalog Number
Notes
Type

## FEATURES & SPECIFICATIONS

**INTENDED USE** — Ideal for use in food and beverage processing, cold storage and garden centers. Fiberglass enclosure protects fixture while remaining easy to service and clean. Not for use or installation in direct outdoor sunlight. Must be installed under canopy or covered ceiling. For direct sunlight installations, please refer to the [FEX](#) product family. **Certain airborne contaminants can diminish the integrity of acrylic and/or polycarbonate.** [Click here for Acrylic-Polycarbonate Compatibility table for suitable uses.](#)

**Certain airborne contaminants may adversely affect the functioning of LEDs and other electronic components, depending on various factors such as concentrations of the contaminants, ventilation, and temperature at the end-user location.** [Click here for a list of substances that may not be suitable for interaction with LEDs and other electronic components.](#)

**CONSTRUCTION** — One-piece 5VA rated fiberglass housing with continuous poured-in-place, closed-cell gasket. Three piece captive latches lock onto the housing to keep latches from becoming displaced during strenuous cleaning. 7/8" opening on each end, suitable for use with 1/2" trade size connector/conduit.

**OPTICS** — Injection-molded acrylic, impact-resistant diffuser (.080" thick), available in clear or frosted, features side lineal prisms and frosted ends (clear). Frosted lens recommended for lower mounting heights and enhanced visual comfort. UV stabilized polycarbonate diffuser option available (.080" thick) for increased impact resistance. Three piece stainless steel latches keep lens securely fastened.

**ELECTRICAL** — Utilizes high-efficiency LEDs mounted to core circuit boards. High-efficiency drivers operate 120-480 volt offered with 0-10 volt dimming, allowing granular control when coupled with wireless networking controls. Luminaire Surge Protection Level: Designed to withstand up to 6kV/3kA per ANSI C82.77-5-2015. Expected service life of 72,000 hours at 80% lumen maintenance (L80); predicted life of more than 100,000 hours.

**INSTALLATION** — Luminaire can be surface or suspend mounted. Surface Mounting requires RMKZP or RMKSS. Power connection is easily accommodated through pre-drilled holes at each end, watertight plugs ship standard on each end. Stainless steel mounting straps (standard), included for suspension with aircraft cable (cable not included). Optional stainless steel V-hooks available for chain hanging (chain not included). Mounting straps also accommodate RMKSS or RMKZP accessory for surface mounting.

**LISTINGS** — CSA Certified to UL and C-UL Standards. Suitable for wet location. IP65, IP66, IP67 (4ft. only) and IP69k (2ft. only) rated. NSF Splash Zone 2 and Non-Food Zone rated. NEMA 4X rated. Sensors maintain IP65 and IP66 only. Ambients listed on page 4.

DesignLights Consortium® (DLC) Premium qualified product and DLC qualified product. Not all versions of this product may be DLC Premium qualified or DLC qualified. Please check the DLC Qualified Products List at [www.designlights.org/QPL](http://www.designlights.org/QPL) to confirm which versions are qualified.

**BUY AMERICAN ACT** — Product with the BAA option is assembled in the USA and meets the Buy America(n) government procurement requirements under FAR, DFARS and DOT regulations. Please refer to [www.acuitybrands.com/buy-american](http://www.acuitybrands.com/buy-american) for additional information.

**WARRANTY** — 5-year limited warranty. This is the only warranty provided and no other statements in this specification sheet create any warranty of any kind. All other express and implied warranties are disclaimed. Complete warranty terms located at: [www.acuitybrands.com/support/warranty/terms-and-conditions](http://www.acuitybrands.com/support/warranty/terms-and-conditions)

**NOTE:** Actual performance may differ as a result of end-user environment and application. All values are design or typical values, measured under laboratory conditions at 25 °C. Specifications subject to change without notice.

High-Pressure Hose-Down



### A+ Capable Luminaire

This item is an A+ capable luminaire, which has been designed and tested to provide consistent color appearance and out-of-the-box control compatibility with simple commissioning.

- All configurations of this luminaire meet the Acuity Brands' specification for chromatic consistency
- This luminaire is part of an A+ Certified solution for nLight® or control networks marked by a **shaded background**\*

To learn more about A+, visit [www.acuitybrands.com/aplus](http://www.acuitybrands.com/aplus).

\*See ordering tree for details

# FHE LED High-Pressure Hose-Down, LED



A+ Capable options indicated by this color background.

## ORDERING INFORMATION

Lead times will vary depending on options selected. Consult with your sales representative.

**Example:** FHE L24 18000LM ACL MD MVOLT GZ10 50K 80CRI

FHE									
Series	Length	Nominal Lumens		Diffuser	Distribution	Voltage		Driver	
FHE	L24	9000LM	9,000 lumens	ACL Clear acrylic	ND Narrow distribution	MVOLT	120-277V,50/60HZ	GZ10 0-10v dimming	
		12000LM	12,000 lumens	PCL Clear polycarbonate	MD Medium distribution	HVOLT	347-480V,50/60HZ		
		15000LM	15,000 lumens	FST Frosted acrylic		120	120V, 50/60HZ		
		18000LM	18,000 lumens			277	277V, 50/60HZ		
		24000LM	24,000 lumens			347	347V, 50/60HZ		
				480		480V, 50/60HZ			
	L48	18000LM	18,000 lumens						
		24000LM	24,000 lumens						
		28000LM	28,000 lumens						
		36000LM	36,000 lumens						
40000LM		40,000 lumens							

Color temperature <sup>†</sup>	CRI	Options	
30K 3000 K	80CRI 80 CRI	<b>Emergency:</b>	<b>Other Options:</b>
35K 3500 K	90CRI 90 CRI	E10WLCP EM Self-diagnostics battery pack, 10W, Constant Power Certified in CA Title 20 MAEDBS <sup>†</sup>	BAA Buy America(n) Act Compliant
40K 4000 K		FE14WCP EM Self-diagnostics battery pack, 14W, Constant Power Certified in CA Title 20 MAEDBS, -20°C, utilizes Fulham battery <sup>†</sup>	EMK End mount suspension bracket <sup>†</sup>
50K 5000 K		<b>Cord Sets:</b>	MHKB Stainless steel V-hook and brackets
		CS89 Cord only (no plug), 600V, STW cord, 16 gauge, 3 conductors, 6ft, white, wet location <sup>†</sup>	PMP4X Pendant monopoint with NEMA4X fitting <sup>†</sup>
		CS89L12 Cord only (no plug), 600V, STW cord, 16 gauge, 3 conductors, 12ft, white, wet location <sup>†</sup>	RMKSS Rigid mount bracket, stainless steel <sup>†</sup>
		CS88 Brad Harrison Mini-Change <sup>®</sup> cordset with straight blade plug, 600V, ST00W cord, 16 gauge, 3 conductors, 6ft, yellow <sup>†</sup>	RMKZP Rigid mount bracket, zinc plated <sup>†</sup>
		CS88L12 Brad Harrison Mini-Change <sup>®</sup> cordset with straight blade plug, 600V, ST00W cord, 16 gauge, 3 conductors, 12ft, yellow <sup>†</sup>	SPD Surge protection device 10kV
		CS88R Brad Harrison Mini-Change <sup>®</sup> receptacle <sup>†</sup>	WLF Wet location fitting <sup>†</sup>
		CS93W4C Cord only (no plug), 600V, STOW cord, 18 gauge, 4 conductors, 6ft white <sup>†</sup>	WLFEND Wet location fitting (one end) <sup>†</sup>
		CS6616STOW5D Cord only (no plug), 600V, STOW cord, 18 gauge, 5 conductors, includes 0-10V dimming leads, white, 6ft <sup>†</sup>	WLFEND2 Wet location fitting (both ends) <sup>†</sup>
			<b>Individual controls:</b>
			MSI6NWL 360° High mount sensor, (15-30' mounting heights), outdoor PIR, on/off occupancy, wet location ( <a href="#">LINK</a> ) <sup>†</sup>
			MSI62L3VWL 360° High mount sensor, (15-30' mounting heights), outdoor PIR, occupancy controlled dimming (bi-level), wet location ( <a href="#">LINK</a> ) <sup>†</sup>
			MSI10NWL 360° Low mount sensor, (8-15' mounting heights), outdoor PIR, on/off occupancy, wet location ( <a href="#">LINK</a> ) <sup>†</sup>
			MSI102L3VWL 360° Low mount sensor, (8-15' mounting heights), outdoor PIR, occupancy controlled dimming (bi-level), wet location ( <a href="#">LINK</a> ) <sup>†</sup>
			<b>nLight Wireless:<sup>†</sup></b>
			NLTAIR2 RSBOR6 nLight <sup>®</sup> Air Generation 2 enabled, 360° high mount sensor, (15-30' heights) ( <a href="#">LINK</a> )
			NLTAIR2 RSBOR10 nLight <sup>®</sup> Air Generation 2 enabled, 360° low mount sensor, (8-15' heights) ( <a href="#">LINK</a> )

### Accessories: Order as separate catalog number.

#### Mounting Accessories (ships in pairs, order one per fixture):

FHEMHKB	Stainless steel V-hook and brackets
FHEEMK	End mount suspension bracket
FHERMKZP	Rigid mounting bracket, zinc plated
FHERMKSS	Rigid mounting bracket, stainless steel

#### Hanging Accessories (ships in pairs, order as needed):

MHCH36	3' Double chain <sup>†</sup>
MHHK120	10' single leg aircraft cable <sup>†</sup>
MHHK120SS	10' single leg aircraft cable, stainless steel <sup>†</sup>
FHEACT120	10' Y-toggle aircraft cable
FHEACT240	20' Y-toggle aircraft cable
FHEACT120SS	10' Y-toggle aircraft cable, stainless steel
FHEACT240SS	20' Y-toggle aircraft cable, stainless steel

# FHE LED High-Pressure Hose-Down, LED

## ‡ Option Value Ordering Restrictions

Option Value	Restriction
Color Temperature	The CCT value provided is of lamp source and actual CCT will vary upon levels.
CS6G16STOW5D	Not available with MSI sensors, NLTAIR RSBOR6 & RSBOR10 (dimming not available). Not available with PMP4X, WLF, WLFEND2. Not NEMA 4X rated.
CS88, CS88L12, CS88R	Not available with PMP4X, WLF, WLFEND2. Not NEMA 4X rated.
CS89, CS89L12	Not available with PMP4X, WLF, WLFEND2. Not NEMA 4X rated.
CS93W4C	Only available with E10WLCP & FE14WCP. Not available with PMP4X, WLF, WLFEND2. Not NEMA 4X rated.
E10WLCP	Utilizes Power Sentry, PS1055LCP emergency driver. Requires SPD option. Available in 9000lm and 12000lm 2ft and 18000 and 24000 4ft only. Not available in HVOLT, 347V, 480V. Not available with 3 conductor cords or plugs.
FE14WCP	Utilizes Fulham, FHS2-UNV-56S emergency driver. Requires SPD option. Available in 9000lm and 12000lm 2ft and 18000 and 24000 4ft only. Not available in HVOLT, 347V, 480V. Not available with 3 conductor cords or plugs.
EMK	Requires WLFEND2.
Individual Controls	Not available in MVOLT or HVOLT. Must specify voltage. Requires SPD option
MHCH36	For use with MHKB option.
MHHK120, MHHK120SS	For use with EMK or MHKB options. These options require one pair. When using standard mounting straps requires two pairs.
nLight Wireless	Requires SPD option. Not NEMA 4X rated. Normal luminaires (non-emergency) can be used as a normal power sensing device for nearby nLight AIR devices and luminaires with EM emergency options.
PMP4X	Only available with L24.
RMKSS, RMKZP	Required for Surface Mounting.
WLF	Not available with L24. Maintains wet location rating, not NEMA4X rated.
WLFEND	Maintains wet location rating, not NEMA4X rated.
WLFEND2	Not available with cord set, sensor, or photocell options. Maintains wet location rating, not NEMA4X rated.

# FHE LED High-Pressure Hose-Down, LED

## OPERATIONAL DATA.

80 CRI*							
Length	Package	Input Wattage	CCT	ACL	FST	PCL	Comparable Light Source
				Lumens (LPW)	Lumens (LPW)	Lumens (LPW)	
L24	9000LM	59	30K	8815 (149)	8683 (146)	8764 (148)	2-lamp T5HO
			35K	8998 (152)	8864 (149)	8946 (151)	
			40K	9416 (159)	9276 (156)	9363 (158)	
			50K	9678 (163)	9534 (161)	9623 (162)	
	12000LM	79	30K	12009 (152)	11830 (150)	11941 (151)	4-lamp T8, 250W HID
			35K	12259 (155)	12076 (153)	12189 (155)	
			40K	12829 (163)	12638 (160)	12756 (162)	
			50K	13185 (167)	12989 (165)	13110 (166)	
	15000LM	98	30K	14632 (149)	14415 (147)	14549 (149)	4-lamp T5HO, 6-lamp T8
			35K	14936 (152)	14714 (150)	14851 (152)	
			40K	15631 (160)	15398 (157)	15542 (159)	
			50K	16065 (164)	15826 (162)	15974 (163)	
	18000LM	113	30K	17584 (156)	17322 (154)	17484 (155)	4-lamp T5HO, 6-lamp T8, 400W HID
			35K	17949 (159)	17682 (157)	17847 (159)	
			40K	18784 (167)	18504 (164)	18677 (166)	
			50K	19306 (171)	19018 (169)	19196 (171)	
24000LM	157	30K	23008 (147)	22666 (145)	22877 (146)	6-lamp T5HO, 8-lamp T8	
		35K	23486 (150)	23136 (148)	23352 (149)		
		40K	24578 (157)	24212 (155)	24439 (156)		
		50K	25261 (161)	24885 (159)	25118 (160)		
L48	18000LM	115	30K	18768 (164)	17894 (156)	17981 (157)	4-lamp T5HO, 6-lamp T8, 400W HID
			35K	19157 (167)	18266 (159)	18354 (160)	
			40K	20048 (175)	19115 (167)	19208 (167)	
			50K	20605 (180)	19646 (171)	19741 (172)	
	24000LM	149	30K	24064 (161)	22944 (154)	23055 (155)	6-lamp T5HO, 8-lamp T8
			35K	24564 (165)	23420 (157)	23534 (158)	
			40K	25706 (172)	24510 (164)	24628 (165)	
			50K	26420 (177)	25190 (169)	25313 (170)	
	28000LM	173	30K	27760 (161)	26468 (153)	26597 (154)	6-lamp T5HO, 8-lamp T8
			35K	28337 (164)	27018 (156)	27149 (157)	
			40K	29655 (172)	28275 (164)	28412 (165)	
			50K	30479 (177)	29060 (168)	29201 (169)	
	36000LM	230	30K	36711 (160)	35002 (152)	35172 (153)	750W MH, 8-lamp T5HO
			35K	37474 (163)	35729 (155)	35903 (156)	
			40K	39216 (171)	37391 (163)	37572 (163)	
			50K	40306 (175)	38430 (167)	38616 (168)	
40000LM	254	30K	39168 (154)	37345 (147)	37526 (148)	750W MH, 8-lamp T5HO	
		35K	39982 (157)	38121 (150)	38306 (151)		
		40K	41841 (165)	39894 (157)	40087 (158)		
		50K	43003 (169)	41002 (161)	41201 (162)		

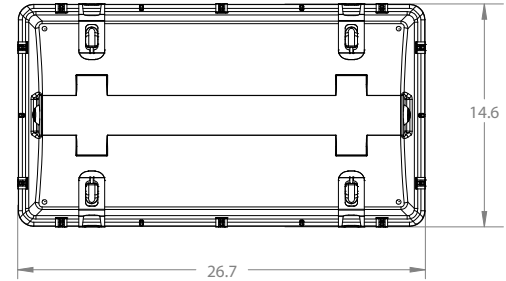
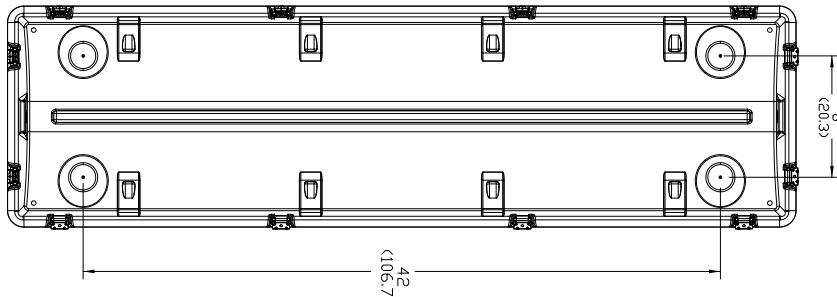
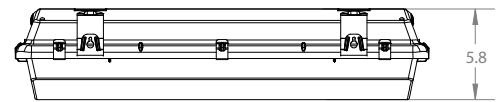
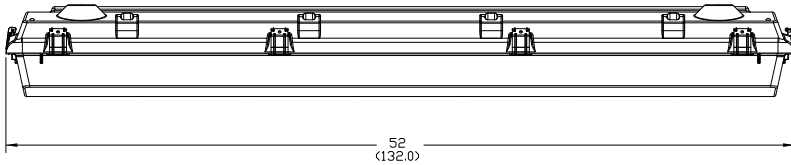
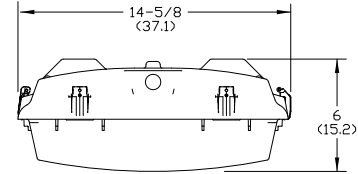
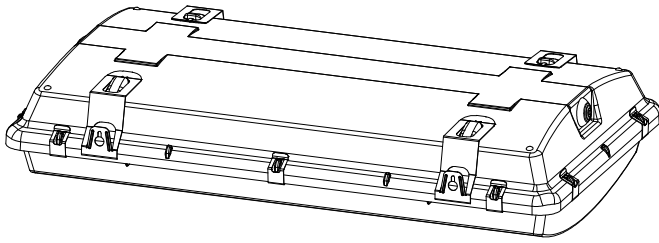
\* For 90CRI, reduce lumen output by 15%

# FHE LED High-Pressure Hose-Down, LED

## DIMENSIONS

Inches (centimeters). Subject to change without notice.

Length	Actual Length	Width	Height	Approximate weight	Fixtures per pallet	Approximate pallet dimensions (L x W x H)
L24	26.7in	14.625in	6in	18lbs.	20	63x16x9
L48	52in	14.625in	6in	35lbs.	10	63x16x9



CSA LISTED AMBIENT RATING*					
		Surface	Suspended**	E10LCP Option	FE14WCP Option
L24	9000LM	45°C	55°C	5°C - 30°C	-20°C - 25°C
	12000LM	45°C	55°C	5°C - 30°C***	-20°C - 30°C***
	15000LM	35°C	50°C	-	-
	18000LM	35°C	45°C	-	-
	24000LM	25°C	35°C	-	-
L48	18000LM	25°C	50°C	5°C - 25°C	-20°C - 25°C
	24000LM	25°C	45°C	5°C - 30°C***	-20°C - 30°C***
	28000LM	25°C	35°C	-	-
	36000LM	25°C	40°C	-	-
	40000LM	25°C	40°C	-	-

\*Minimum Ambient is -40°C unless noted

\*\* Suspended 18" from ceiling

\*\*\* Only available in suspended mounting

# FHE LED High-Pressure Hose-Down, LED

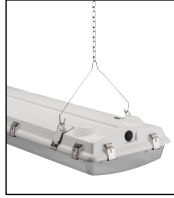
## MOUNTING ACCESSORIES



MHHK (requires two pair)



FHEACT



(MHKB), (MHCH36)



FHEEMK – End mount suspension bracket\*\*



FHERMKSS – Rigid mounting bracket, stainless steel (made from 304 stainless steel)  
FHERMKZP – Rigid mounting bracket, zinc plated

## PHOTOMETRICS

See [www.lithonia.com](http://www.lithonia.com) for photometry reports.

## rSBOR – WET LOCATION, Fixture Mount Sensor (see [www.sensorswitch.com](http://www.sensorswitch.com) for additional information)

- 360° coverage
- On/Off dim
- Photocell optional
- IP66 rated
- Photocell and 0-10VDC dimming options.

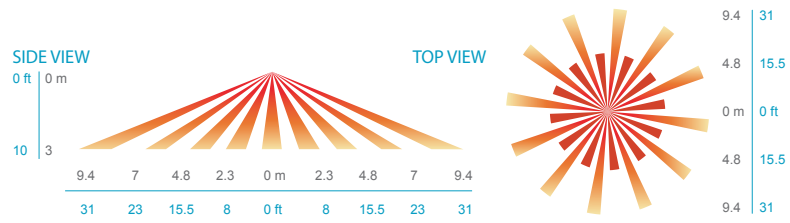
Fixture sensor nomenclature	SBOR sensor nomenclature
For shortest lead times use one of the following SBOR configurations	
<b>NLTAIR2 RSBOR6</b>	rSBOR 6 EB3 WH G2
<b>NLTAIR2 RSBOR10</b>	rSBOR 10 EB3 WH G2
<b>MS10NWL DSCNWL</b>	SBOR 10 OEX P EB3 WH



## COVERAGE PATTERNS

### PARKING GARAGE / LOW MOUNT APPLICATIONS

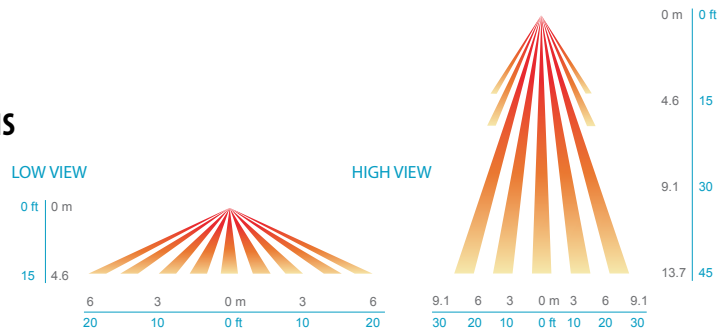
In general, the SBOR 10 is recommended for 8-15 ft (2.44-4.57 m) mounting and provides a coverage area radius for walking motion of greater than 2x the mounting height. The SBOR 10 ODP is ideal for parking garage and low pole mount applications. When mounted 10 ft high, for example, on a luminaire in a parking garage, the sensor's coverage for walking motion extends out 30 ft in a 360° pattern. This closely matches the lighting distribution of a typical parking garage luminaire. When mounted to a light pole, for example, in a parking lot or along a path, the sensor provides 270° of coverage (90° is blocked by the pole). Note, walking askew to sensor typically results in earlier detection than walking directly at sensor.



Coverage Pattern of Low Mount Lens Option (SBOR 10)

### SITE & AREA LIGHTING / HIGH MOUNT APPLICATIONS

The SBOR 6 is intended for higher pole mount applications, between 15-30 ft (4.57-9.14 m), and provides a coverage area radius for walking motion of 15-20 ft (4.57-6.10 m). When mounted to a pole the sensor provides 270° of coverage (90° is blocked by the pole).



Coverage Pattern of High Mount Lens Option (SBOR 6)