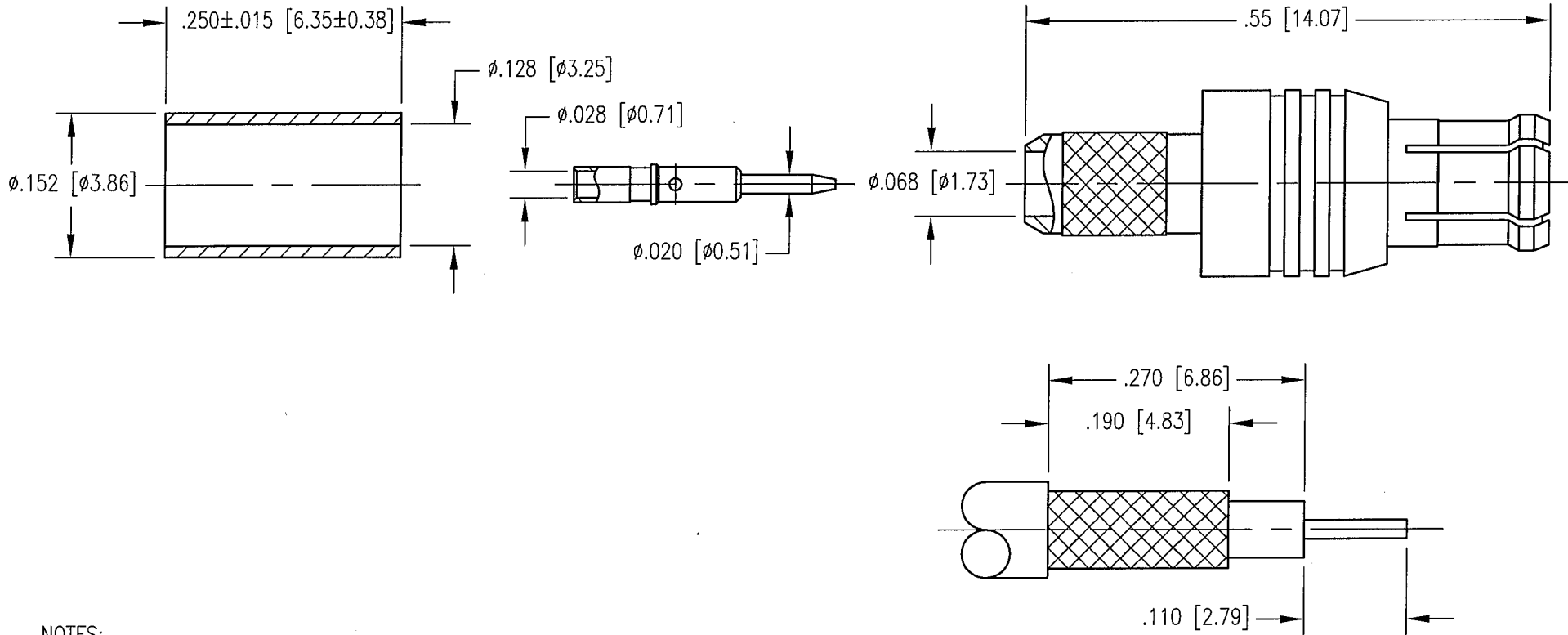


DWG. NO.		450-900-0630H	
REV	DESCRIPTION	BY DATE	APPD
D	NPR 2762A	JED 2/7/02	[Signature]



CABLE TRIMMING DIMENSIONS

NOTES:

- MATERIALS:  
FRONT BODY AND FERRULE: COPPER ALLOY  
ALL OTHER METAL PARTS: BRASS PER ASTM B16  
INSULATOR: TEFLON PER ASTM D1710
- FINISH:  
CENTER CONTACT: .000030 MIN. GOLD PER MIL-G-45204 OVER  
.000050 MIN. NICKEL PER QQ-N-290  
FERRULE: .000005 MIN. GOLD PER MIL-G-45204 OVER  
.000050 MIN. NICKEL PER QQ-N-290  
ALL OTHER METAL PARTS: .000015 MIN. GOLD PER MIL-G-45204 OVER  
.000050 MIN. NICKEL PER QQ-N-290
- FOR USE WITH RG-316 CABLE OR EQUIVALENT.
- FOR CABLING PROCEDURES USE CAP 9-08 WITH TRIMMING DIMENSIONS SHOWN.
- CRIMP FERRULE USING .128 HEX DIE.

PER ASME Y14.5M-1994 UNLESS OTHERWISE SPECIFIED: DIMENSIONS ARE IN INCHES [MM]		<b>NORTHROP GRUMMAN</b>	
TOLERANCES: DECIMALS .XX $\pm$ .01 [0.254] .XXX $\pm$ .005 [0.127] ANGLES $\pm$ 2' SCALE: 6:1		Winchester Electronics 400 Park Road Watertown, CT 06795	
CUSTOMER DRAWING		TITLE MCX STRAIGHT PLUG	
DRAWN JED	DATE 2/7/02	CHECKED [Signature]	DATE 2/7/02
APPROVED [Signature]	DATE 2/8/02	APPROVED [Signature]	DATE 2/8/02
A		450-900-0630H	SHT. 1 OF 1 REV. D