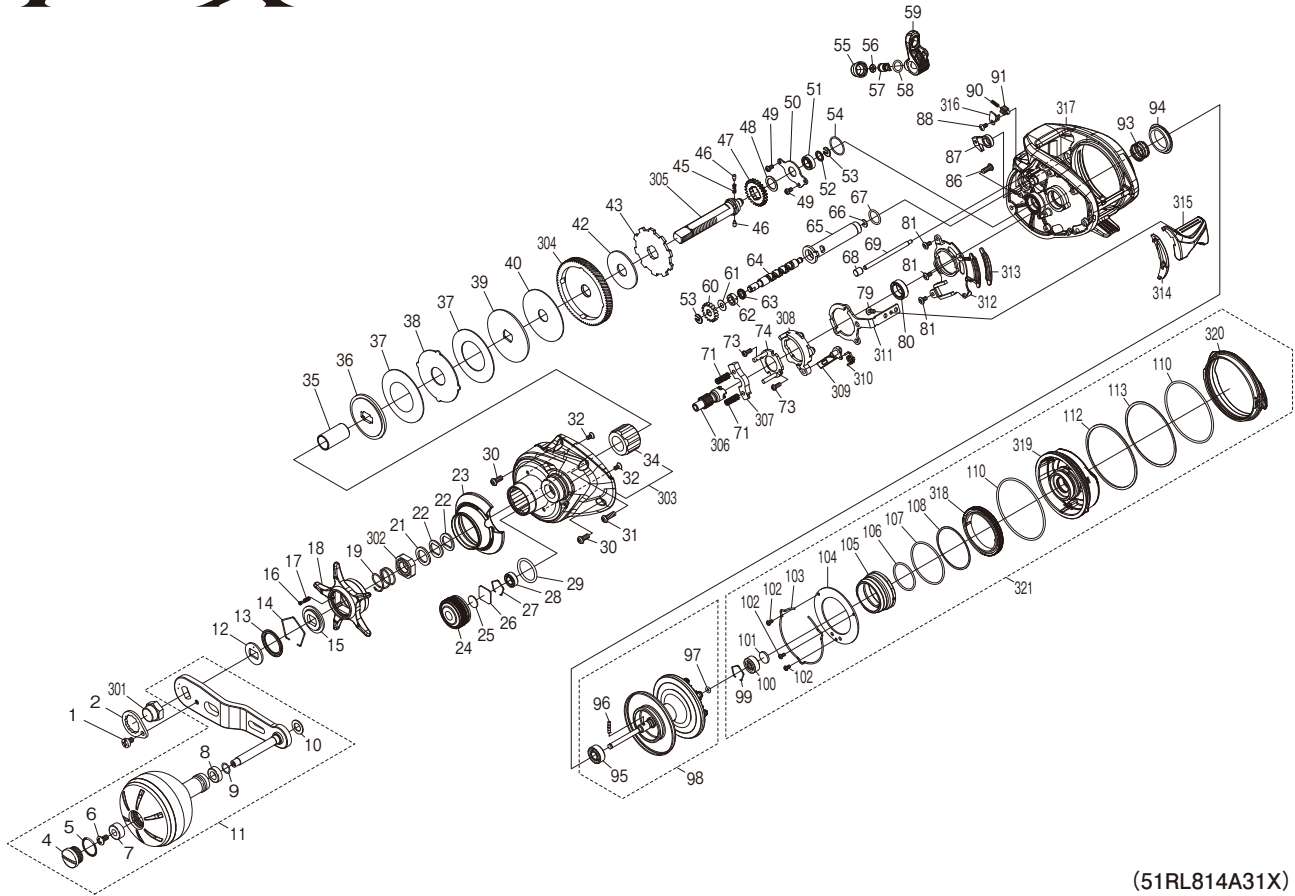


SHIMANO

TRAX

TRX301HGB



(51RL814A31X)

#	Part No.	BNT No.	Description	#	Part No.	BNT No.	Description	#	Part No.	BNT No.	Description
1	13NXD		Screw	45	10JDZ	5027	die Gear Spring	96	10MD1	5766	Spool Clutch Pin
2	13VAD		Handle Nut Plate	46	10HJG	5310	Idle Gear Pin	97	10EZ7	5218	O Ring
4	13AYU		Handle Knob Seal	47	10J47	4872	Idle Gear	98	148SK		Spool Assembly
5	10LAB	5717	O Ring	48	10G6D	5715	Washer	99	1054D	5319	Bearing Retainer
6	103E9	4116	Screw	49	10S3Y	5756	Screw	100	105C2	5523	Ball Bearing
7	10EU0	5718	Bushing	50	145S6		Drive Shaft Retainer	101	10EX5	5346	Spacer
8	104UJ	5719	Bushing	51	105BP	4194	Ball Bearing	102	10E7R	6160	Screw
9	104FH	6555	Washer	52	10C47	2144	Washer	103	145S0		Cam Lever Retainer
10	148SL		Washer	53	105NK	7199	E Lock	104	147J3		Brake Dial Retainer Plate
11	147HX		Handle Assembly	54	10LA8	4981	O Ring	105	148DF		Brake Ring Gear Assembly
12	10QVN	5475	Drive Shaft Shield	55	10FJB	4874	Pawl Cap	106	146GJ		O Ring
13	10QVP	5532	Star Drag Seal	56	10CFU	6701	Spacer	107	10MLU		O Ring
14	10KXW	5314	Click Plate Retainer	57	10BHQ	5383	Line Guide Pawl	108	146HL		Washer
15	10J26	5860	Star Drag Click Plate	58	108WQ	4729	O Ring	110	145SP		O Ring
16	10MFC	5316	Click Pin	59	10R7V	5497	Line Guide Assembly	112	146HN		Washer
17	10BT2	2123	Click Spring	60	1024Q	5499	Idle Gear	113	146HP		Washer
18	147HY		Star Drag	61	10FJZ	4588	Washer	301	10R3C	5531	Handle Nut
19	10A70	4124	Star Drag Spring	62	10PXZ	5334	Bushing	302	10R3H	7373	Star Drag Nut
21	10J1P	6450	Star Drag Spacer	63	1024R	5500	Worm Shaft Seal	303	148SE		A Side Plate Assembly
22	109F5	5376	Drag Spring Washer	64	146AP		Worm Shaft	304	146JA		Drive Gear
23	145RX		Clutch Button Attachment	65	145SF		Level Wind Guard	305	146J9		Drive Shaft
24	147HZ		Cast Control Cap	66	105NC	1672	E Lock	306	146JB		Pinion Gear
25	10896	1696	Cast Control Spacer	67	101GT	5503	O Ring	307	1046Y	5005	Yoke
26	148DJ		Cast Control Spacer	68	14694		Stabilizer Bar Retainer	308	10225	5541	Clutch Cam
27	148DK		Retainer	69	145S1		Stabilizer Bar	309	1021U	5542	Clutch Pawl
28	105BR	4945	Ball Bearing	71	104CB	5201	Yoke Spring	310	1021T	5543	Clutch Pawl Spring
29	108WK	2429	O Ring	73	10LVJ	5505	Screw	311	1021Z	5544	Clutch Plate
30	10LZB		Screw	74	10QVM	5506	Clutch Cam Retainer	312	10227	5545	Clutch Guard
31	148SS		Screw	79	10LCL	5511	Screw	313	1021Y	5547	Clutch Button Seal
32	10LA3	6714	Screw	80	105BT	5858	Ball Bearing	314	146J8		Clutch Bar Guide
34	10F37	4447	Roller Clutch Bearing	81	10SUT	6711	Screw	315	1021W	5549	Clutch Lever
35	145RZ		Roller Clutch Inner Tube	86	10U0T	6712	Screw	316	1021X	5550	Retention Spring Retainer
36	145SX		Key Washer	87	10MW2	3705	Anti-Reverse Pawl	317	148SF		Frame Assembly
37	145S8		Drag Washer	88	10LCT	5609	Screw	318	147BQ		Brake Dial
38	145SH		Eared Washer	90	101J6	5518	Clutch Retention Spring	319	148SG		Dial Case Assembly
39	145SW		Key Washer	91	10TZC	5519	Clutch Retention Pin	320	147HQ		B Side Plate Cam Lever
40	1024D	5487	Drag Washer	93	10EZE	5211	Bearing Pressure Spring	321	148SH		B Side Plate Assembly
42	1025A	5492	Drag Washer	94	1024L	5521	Frame Center Seal				
43	145SG		Anti-Reverse Ratchet	95	105CA	5765	Ball Bearing				

Please note that the number of adjusting washers may not be the same as shown in the exploded views.
(Adjustment will vary with each individual product.)

(240710)_003