

NOTES: UNLESS OTHERWISE SPECIFIED
 1. FOR USE WITH RG-174, 188, 316, OR EQUIVALENT CABLE.

2. MATERIAL SPECIFICATIONS:
 INSULATOR: PTFE
 RETAINER RING: BERYLLIUM COPPER
 FERRULE: COPPER
 ALL OTHER METAL PARTS: BRASS

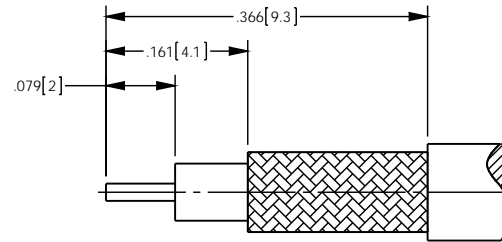
3. FINISH SPECIFICATIONS:
 CONTACT: .000003 MIN THICK GOLD OVER .000050 MIN THICK NICKEL
 ALL OTHER METAL: THIN GOLD OVER .000050 MIN THICK COPPER

4. ELECTRICAL SPECIFICATIONS:
 IMPEDANCE: 50 OHMS
 FREQUENCY RANGE: DC TO 6.0 GHz
 VSWR: 1.20 MAX TO 3.0 GHz

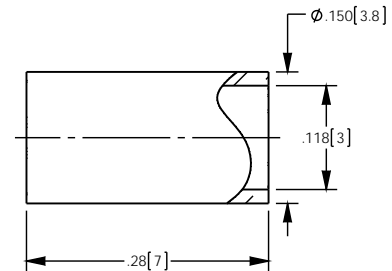
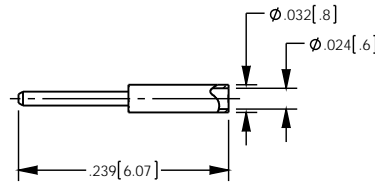
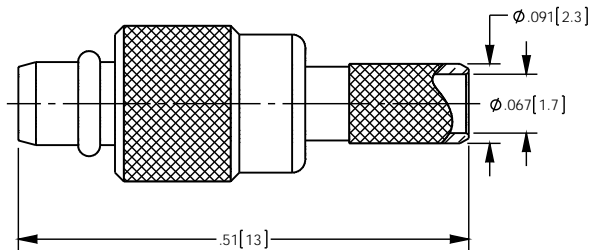
5. CONTACT AND FERRULE SHIPPED LOOSE

6. CRIMP FERRULE (.128[3.25] HEX) AND CONTACT PIN TO SOLDER.

REV	DESCRIPTION	BY DATE	APPD
A	ER059185	JF 08/11/15	DCAM



RECOMMENDED CABLE STRIPPING DIM'S



CATALOG P/N: 1310A204M

PER ASME Y14.5M-1994 UNLESS OTHERWISE SPECIFIED, DIMENSIONS ARE IN INCHES (MM)			
TOLERANCES: DECIMAL: .XX [XX] ± .01 [0.3] XXX [X.XX] ± .005 [0.13] XXXX [X.XXX] ± .0005 [0.013]			
ANGLES: ± 2° SCALE: 6:1			
CUSTOMER SALES DRAWING		THIRD ANGLE	
DRAWN	DATE	APPROVED	DATE
JF	07/16/2015	JF	08/11/2015
APPROVED	DATE	APPROVED	DATE
DCAM	07/16/2015	XXX	XX/XX/XX



MMCX CRIMP PLUG
 (FOR RG-174, 188A, 316)
 (RoHS)

A	SD1310A204M	SHT	OF	REV
		1	1	A