

Catalog Number
Notes
Type

FEATURES & SPECIFICATIONS

INTENDED USE — Drill mount tenon adaptor converts pole-top tenons to accommodate arm-mounted luminaires.

CONSTRUCTION

Aluminum: Slipfitters are formed from aluminum 6061 alloy schedule 40 pipe, heat-treated to a T6 temper after welding. Welding follows industry-standard best practices.

Top cap: Plastic top cap included.

FINISH — Extra durable standard powder-coat finishes include Dark Bronze, White, Black, and Natural Aluminum colors. Architectural Colors and Special Finishes are available by quote and include, but are not limited to RAL Colors, custom Colors, Extended Warranty Finishes, Hot-dipped Galvanized, Paint over Hot-dipped Galvanized for steel, Brushed Aluminum, and Anodized Dark Bronze, Anodized Natural Aluminum and Anodized Black for aluminum. Factory-applied primer paint finish is available for customer field-paint applications.

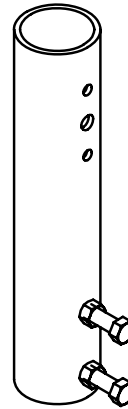
INSTALLATION — Stainless steel set screws included. Slide slipfitter over pole tenon and tighten down set screws. Proceed with arm installation.

WARRANTY — 1-year limited warranty. This is the only warranty provided and no other statements in this specification sheet create any warranty of any kind. All other express and implied warranties are disclaimed. Complete warranty terms located at: www.acuitybrands.com/support/warranty/terms-and-conditions

NOTE: Actual performance may differ as a result of end-user environment and application. Specifications subject to change without notice.

Drill-Mount Tenon Slipfitter

TXX/ASTXX/ASXX



STANDARD (TXX) OR AERIS™/OMERO™ (ASTXX) DRILL PATTERN

(See next page for dimensions and drawings.)

ORDERING INFORMATION

Lead times will vary depending on options selected. Consult with your sales representative.

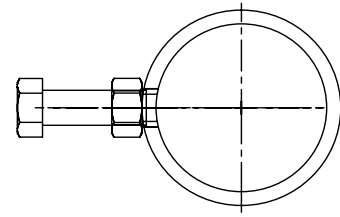
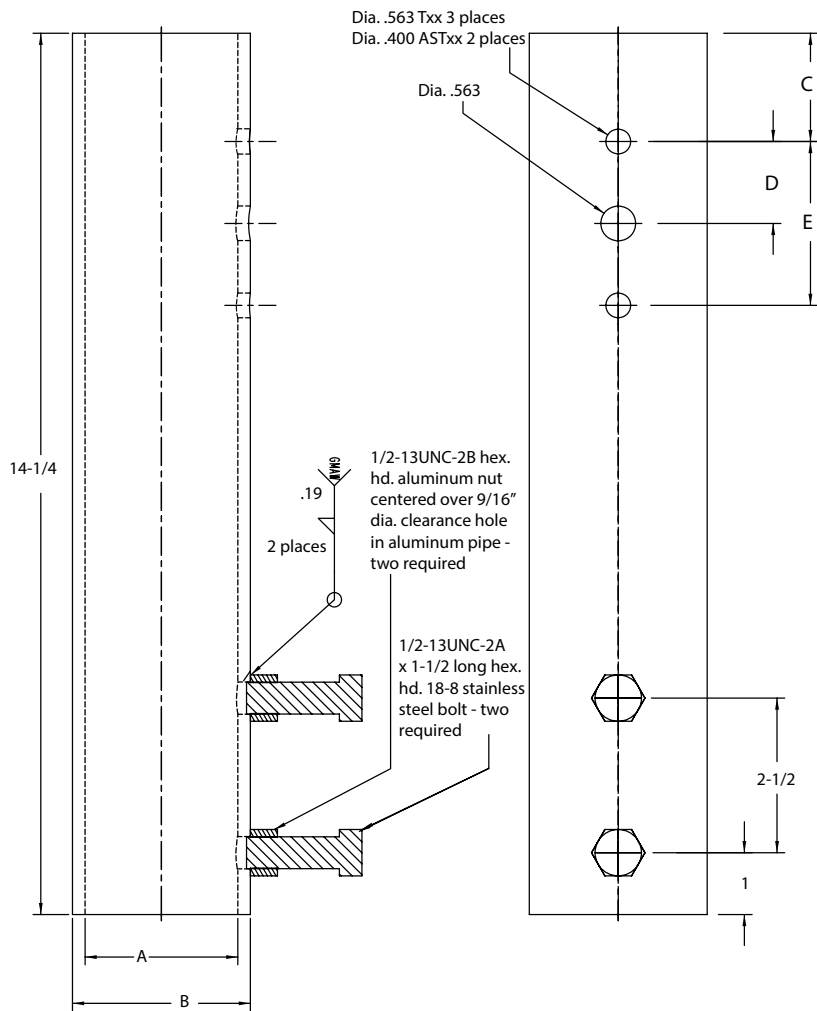
Example: T20-280 DDBXD

Drilling and slipfitter size ¹	Drilling orientation	Finish ³
Aluminum Slipfitters ²		
T20 2.88" O.D.	190 1 at 90°	Super durable colors
T25 3.50" O.D.	280 2 at 180°	DDBXD Dark bronze
T35 4.57" O.D.	290 2 at 90°	DBLXD Black
AST20 2.88" O.D.	320 3 at 120°	DNAXD Natural aluminum
AST25 3.50" O.D.	390 3 at 90°	DWHXD White
AST35 4.57" O.D.	490 4 at 90°	DDBTXD Textured dark bronze
		DBLBXD Textured black
		DNATXD Textured natural aluminum
		DWHGXD Textured white
		Other finishes
		BA Brushed aluminum
		DPRM Red primer

NOTES:

1. Additional custom sizes and drillings are available; consult factory.
2. Txx uses drill template #5. ASTxx uses drill template #8.
3. Finish must be specified. Additional colors available; see Architectural Colors brochure linked [here](#) (Form No. 794.3).

Txx/ASTxx Drill-Mount Tenon Slipfitter; Metal, Fiberglass or Concrete Poles



Drill-Mount Tenon Slipfitter Data

Lithonia Lighting Catalog Number	Drilling Template Pattern	DIMENSIONS (INCHES)				
		A	B	C	D	E
T20-xxx	#5	2.468	2.875	1.750	2.125	4.250
T25-xxx	#5	3.062	3.500	1.750	2.125	4.250
T35-xxx	#5	4.100	4.574	1.750	2.125	4.250
AST20-xxx	#8	2.468	2.875	1.750	1.325	2.650
AST25-xxx	#8	3.062	3.500	1.750	1.325	2.650
AST35-xxx	#8	4.100	4.574	1.750	1.325	2.650

TECHNICAL INFORMATION — EPA (ft²) WITH 3-SECOND GUST PER AASHTO 2013

Lithonia Lighting Catalog Number	MAX EPA (ft ²) AT 50ft MOUNTING HEIGHT	
	100 MPH Per Luminaire	MAX Weight Per Luminaire
T20-xxx	6.5	55 lbs.
T25-xxx	6.5	55 lbs.
T35-xxx	6.5	55 lbs.
AST20-xxx	6.5	55 lbs.
AST25-xxx	6.5	55 lbs.
AST35-xxx	6.5	55 lbs.

IMPORTANT:

- These specifications are intended for general purposes only. Lithonia Lighting reserves the right to change material or design, without prior notice, in a continuing effort to upgrade its products.

CAUTION:

- The arms described herein are designed for applications in areas of normal winds. Consult the factory prior to the design of systems to be mounted on structures such as bridges or buildings, or areas known to have abnormal winds such as airports or coastal areas. Failure to consider these factors in the system design could result in the failure of the pole or mast arm, and consequently personal injury or property damage.