

SW28R

BATTERY RIDE-ON SWEEPER



HILLYARD

The Cleaning Resource®

 **TRIDENT®**

Better Built. Better Equipment.

Better Built. Better Equipment.



Intelligent Design



Exceptional Engineering



Innovative Technology

The Trident SW28R ride-on battery-powered sweeper redefines cleaning efficiency with a host of exceptional features. Its adaptability shines through as it effortlessly tackles both indoor and outdoor environments, transitioning between hard floors and carpets with a simple brush change. The user benefits from excellent sight lines, ensuring precision in cleaning tasks. Comfort is prioritized, courtesy of the cushioned seat and ergonomically designed steering wheel that prioritize the operator's well-being.

With a substantial 105-liter debris hopper equipped with wheels, emptying is easy and efficient, minimizing downtime. The Trident SW28R boasts an impressive 39-inch cleaning path, covering up to 97,950 square feet per hour. Its versatility extends further with a built-in vacuum cleaner featuring a long wand, enabling users to reach areas beyond where the sweeper can drive.

Another standout feature is the optional HEPA air filter, capturing 99.9 percent of particles smaller than 0.3 microns, enhancing air quality during the cleaning process. In essence, the Trident SW28R stands as a powerhouse, combining efficiency, comfort, and versatility to redefine the standards of ride-on sweepers.



Better Built. Better Equipment.



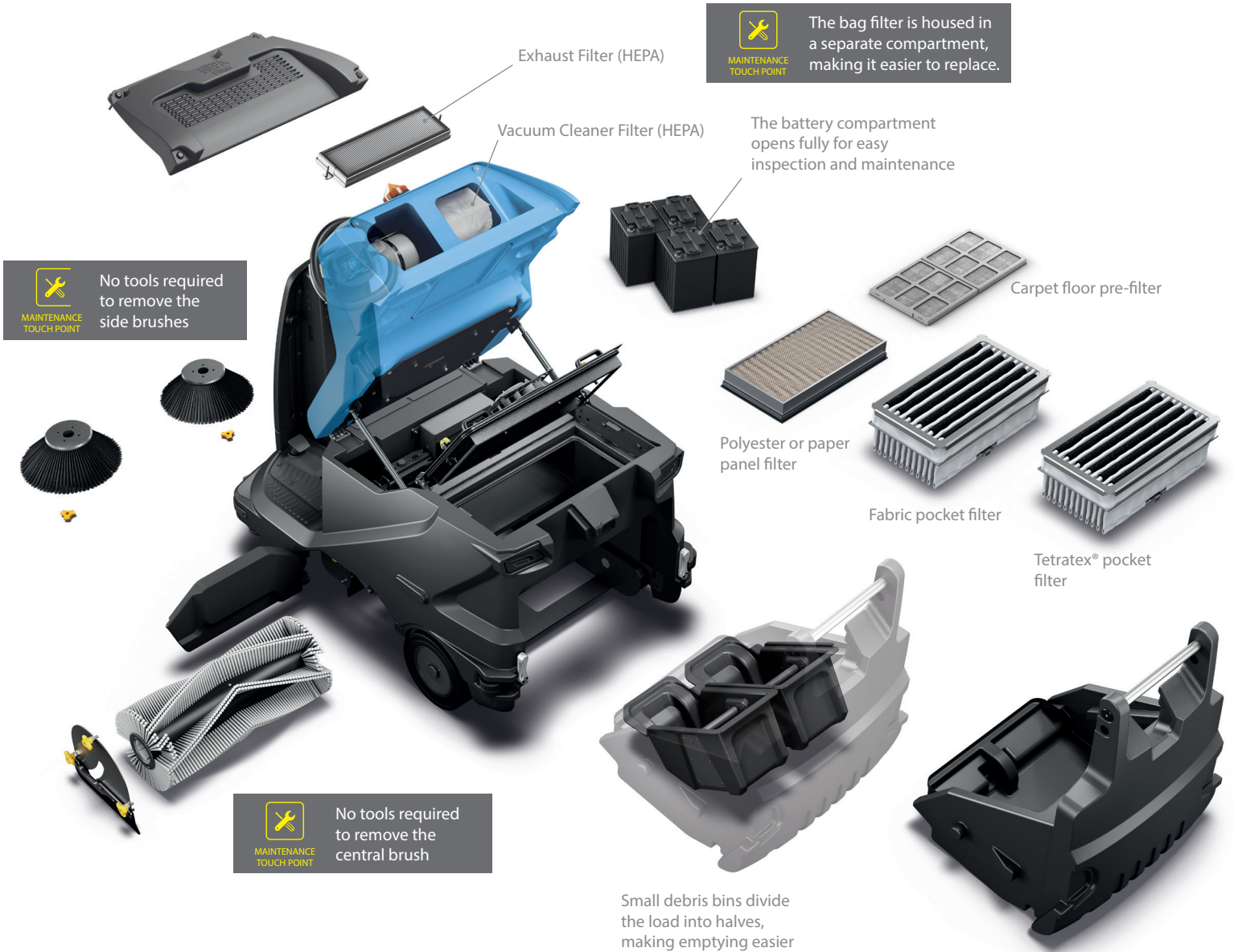
Intelligent Design



Exceptional Engineering



Innovative Technology



Good design prioritizes easy access to important components, making routine inspection and maintenance simple and easy.

Easily remove and replace the debris filter with the help of a central wheel that guides its movement

Better Built. Better Equipment.



Intelligent Design



Exceptional Engineering



Innovative Technology

*Effective sweeping on the first pass.
Get more out of every cleaning.*



SIDE BRUSHES
to channel dirt into
the central area

DEBRIS FLAP
lift to allow large
debris into the hopper

HIGH CAPACITY
hopper holds up to 28
gallons (105 L) of debris

FORCE TECHNOLOGY
ensures constant
brush pressure

Force Technology, standard on every machine, keeps the brush in contact with the floor at all times. It automatically adjusts brush pressure over uneven surfaces or protrusions, producing a uniform cleaning result.



Better Built. Better Equipment.



Intelligent Design

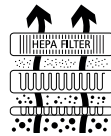


Exceptional Engineering



Innovative Technology

Three filtration steps remove fine particles from the air, improving air quality.



SAFE AIR TECHNOLOGY: multi-stage filtering system

A 3-level filtering system cleans the air. The Optional HEPA filter captures extremely small particles, thereby protecting the health of the operator and the other people in the area.



HEPA filter

High filtering capacity with the finest dust



Polyester or paper panel filter

Pocket filter in fabric or Tetratex®



Pre-filter

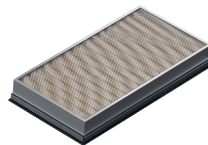
When cleaning carpet floors, the first filtering level blocks and captures large particles to protect the next filters



AUTOMATIC FILTER SHAKER

Ensures filtering performance is maintained over time, shaking the filter regularly to prevent clogging and extend its lifespan

Filter Options



Polyester Panel

- Standard Filter
- Good Filtration
- Light Dust Areas



Fabric Pocket

- Optional Filter
- Better Filtration
- Medium Dust Areas



Tetratex Pocket

- Optional Filter
- Best Filtration
- High Dust Areas
- Excellent Dust Release During Shaking

Better Built. Better Equipment.



Intelligent Design



Exceptional Engineering



Innovative Technology

Power Options

Maintenance Free



- The ultimate solution for simplicity and durability.
- Virtually maintenance free. Just plug in the charger when not in use.
- Full replacement three-year warranty with use of the included Protection from Overdischarge (POD) device.



Flooded Lead Acid



- Conventional deep-cycle battery for cleaning equipment.
- High quality, lower-cost alternative to maintenance-free batteries.
- Requires routine maintenance to maintain electrolyte levels and warranty. Pro-rated one-year warranty.



Battery Charger - Lester Summit Series II



Full replacement 3-year warranty



BLUETOOTH®

Featuring Bluetooth wireless communication with apps for Apple® and Android® phones and tablets. View charge cycle status, select the active battery profile, upload new profiles, change between on-board and off-board and download charge history records anytime using just a smart phone or tablet.



PERFORMANCE

Our Summit Series® II provides industry leading charging performance and intelligence. Our proprietary Progressive DV/DT charge algorithm ensures a precisely charged battery every time. The chargers are tested in extreme temperatures and operating conditions and built to last.



EFFICIENCY

Our switch mode (high frequency) chargers have best-in-class efficiency and are compliant with the latest DOE and CEC standards. We operate a CEC approved laboratory in our Lincoln, NE manufacturing plant.

Brush Options

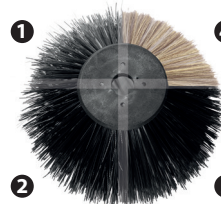
Main Brush

| | | |
|--------------------------|------------|-----------|
| 1. Polypropylene 0.3/0.7 | Light Duty | HIL456985 |
| 2. Polypropylene 0.7/1.1 | Standard | HIL456783 |
| 3. Steel Mix | Outdoor | HIL456984 |
| 4. Natural Fiber | Carpet | HIL459750 |



Side Broom

| | | |
|--------------------------|------------|-----------|
| 1. Polypropylene 0.7 | Light Duty | HIL457641 |
| 2. Polypropylene 1.0 | Standard | HIL429206 |
| 3. Polypropylene 0.7/1.1 | Heavy Duty | HIL429205 |
| 4. Natural Fiber | Carpet | HIL457571 |



Better Built. Better Equipment.

| USER EXPERIENCE | SW28R |
|---|-------|
| Cruise control | • |
| Eco Mode | • |
| Maintenance due warning | • |
| Membrane control panel | • |
| COMFORT | |
| Hour meter | • |
| Vacuum ON/OFF (to protect the filter when cleaning damp surfaces) | • |
| Basic seat | • |
| Driver seat with armrest and safety belt | ○ |
| On-board battery charger (Battery charger sold separately) | ○ |
| Dual inner container | • |
| Set of cleaning accessories (side plate with clips, tub, bag-holder) | ○ |
| Automatic brush lifting system | • |
| PRODUCTIVITY | |
| Extra pressure | • |
| On-board vacuum cleaner with 3-stage vacuum motor and HEPA bag filter | • |
| Automatic filter shaker with timer | • |
| Manual filter shaker | • |
| Front flap lifting device to facilitate the collection of bulky dirt | • |
| HFM (Hillyard Fleet Management) | ○ |
| Front anti-dust skirt | ○ |
| Two side brushes | • |
| Force technology (guarantees uniform cleaning on uneven surfaces) | • |
| SAFETY | |
| Blinking light | • |
| Driving LED lights (front-rear) | ○ |
| LED service lights | ○ |
| Adjusts power for smooth ramp climbing | • |
| Automatic braking when accelerator pedal is released | • |
| Descent control - Maintains constant speed when going downhill | • |
| ESC (Electronic Stability Control) - Reduces speed when turning w/o brake | • |
| Emergency Stop | • |
| Pneumatic rear wheels for outdoor use and uneven surfaces | ○ |
| Overhead guard* | ○ |
| Blue safety spotlight | ○ |
| Bull bar | ○ |
| Mechanical drum brakes | • |
| Electrobrake | • |
| Side brushes that retract in the event of impact | • |
| ENVIRONMENT | |
| Paper panel filter | ○ |
| Polyester panel filter | • |
| Fabric pocket filter** | ○ |
| Tetratex® pocket filter** | ○ |
| Carpet floor pre-filter*** | ○ |
| HEPA output air filter | ○ |
| Start&Stop - Automatically switches off motors when not moving | • |

* Also requires bull bar

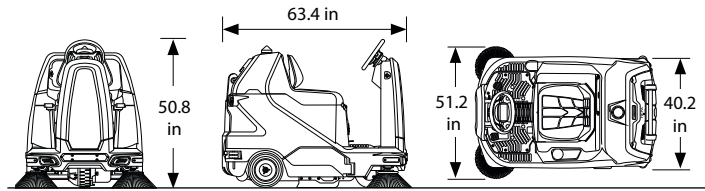
** These two filters cannot be installed together

*** Cannot be installed with the Tetratex filter

• Standard Item ○ Optional Item

*Run times are based on continuous sweeping run times.

The weights are calculated on the basis of a standard reference model.



| TECHNICAL DATA | | SW28R (Item HIL56039) |
|--|--------------|---------------------------|
| Productivity theoretical | up to sqft/h | 97,950 |
| SWEEPING UNIT | | |
| Working width with central cylindrical brush | in | 28 |
| Working width with two side brushes | in | 51.2 |
| Brush motors (central/side) | (no.) V/W | (1) 24/460 - (2) 24/115 |
| Brush rpm (central/side) | rpm | 640/70 |
| DIRT COLLECTION SYSTEM | | |
| Maximum debris hopper volume | l | 105 |
| FILTERING SYSTEM | | |
| Paper panel filter filtration degree | µm | 14 |
| Polyester panel filter filtration degree | µm | 15 |
| Fabric pocket filter filtration degree | µm | 15 |
| Tetratex® pocket filter filtration degree | µm | 5 |
| HEPA output air filter filtration degree | µm | 0.3 |
| Vacuum cleaner HEPA filter filtration degree | µm | 99.9% efficiency |
| BATTERIES | | |
| Supply/traction | V | 24 |
| Battery run time* | hours | up to 2.0 hours |
| PROPELLING SYSTEM | | |
| Forward working speed | mph | 4.4 |
| Transport speed | mph | 5 |
| Gradeability (Working / Transport at gross weight / Trailer ramp at net weight) | % | 12.5 / 14 / 20 |
| Traction motor | (no.) V/W | (1) 24/750 |
| SPECIFICATIONS | | |
| Machine dimensions (L x h x w) | in | 63.4 x 50.8 x 40.2 |
| Machine weight empty without batteries | lbs | 628 |
| Machine weight empty with batteries | lbs | 818 (TPPL) 700 (WET) |
| GVW (Gross Vehicle Weight) | lbs | 1402 (TPPL) 1344 (WET) |
| Sound pressure level (ISO 11201) Eco Mode | dB (A) | < 70 |
| Minimum aisle turn | in | 79 |

ORDER WITH FACTORY INSTALLED BATTERIES

Equipment purchased with factory installed batteries include batteries, cables, and a shelf charger. TPPL machines are equipped with the required Protection From Overdischarge (POD) device.

| Model | SW28R | |
|-----------------------|---|---|
| Hillyard Item Number | HIL56039SLA | HIL56039WET |
| Battery Type | Maintenance Free (TPPL) | Flooded Lead Acid |
| Quantity | 2 | 2 |
| Voltage / Capacity | 12 V / 128 AH | 12 V / 150 AH |
| Dimensions LxWxH (in) | 13.5 x 7.3 x 11 | 13 x 7.2 x 11.2 |
| Weight, Each (lbs) | 95 | 85 |
| Includes | Machine, batteries, cables, shelf charger, POD device | Machine, batteries, cables, shelf charger |

The Cleaning Resource®

PO Box 909
St. Joseph, MO 64502
www.hillyard.com

LIT-SW28R-0324

