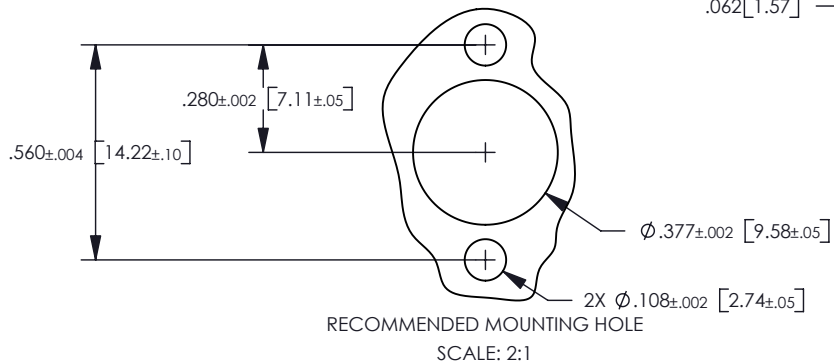
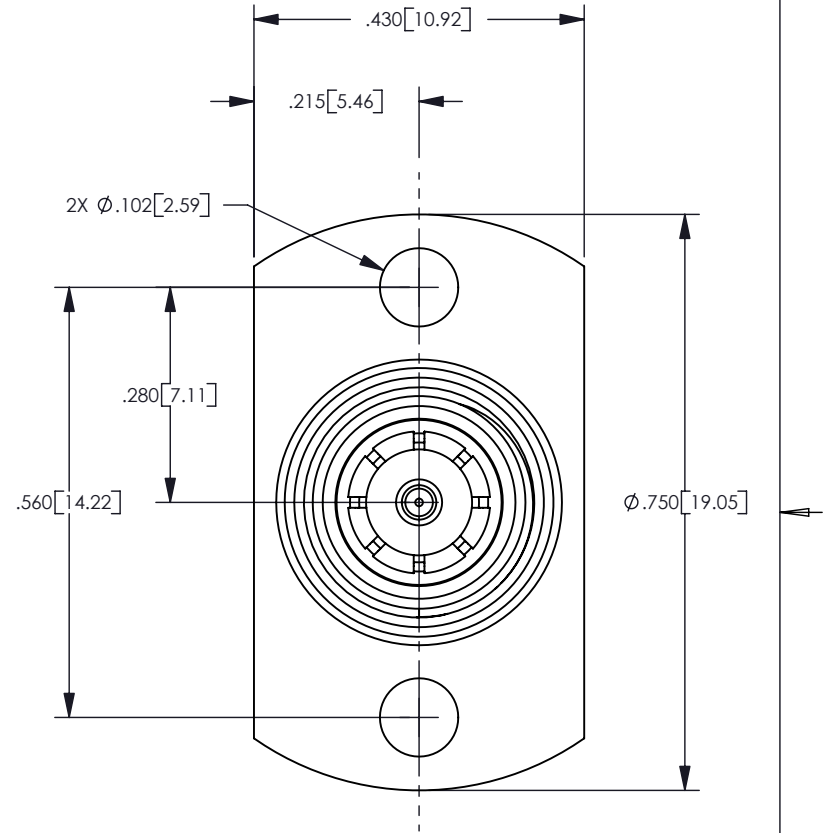
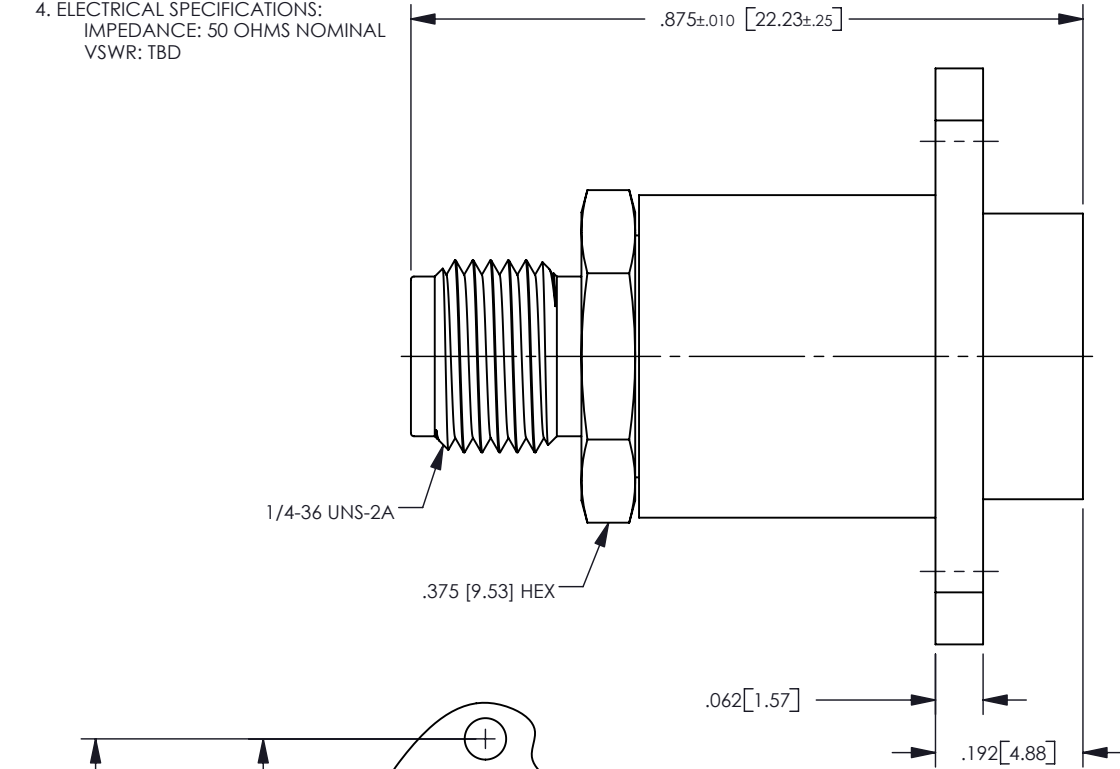


NOTES: UNLESS OTHERWISE SPECIFIED

1. FOR SMA GENERAL SERIES SPECIFICATIONS, SEE SD25-0000.
2. MATERIAL SPECIFICATIONS:
 BODIES: STAINLESS STEEL PER ASTM A582
 CENTER CONTACT: COPPER ALLOY
 SPRING: MUSIC WIRE
 HOUSING: BRASS PER ASTM B16
 INSULATOR: TEFLON PER ASTM D1710
3. FINISH SPECIFICATIONS:
 BODIES: PASSIVAT
 OUTER AND CENTER CONTACTS: .000030 MIN GOLD PER ASTM B488
 OVER .000050 MIN NICKEL PER AMS-QQN-290 (RoHS)
 HOUSING: .000100 MIN NICKEL PER AMS-QQ-N-290 OVER COPPER FLASH
4. ELECTRICAL SPECIFICATIONS:
 IMPEDANCE: 50 OHMS NOMINAL
 VSWR: TBD

REV	DESCRIPTION	BY DATE	APPD
03	EWR06-241	08/14/06 PSM	DCam



CATALOG P/N: 251-380-5900P

PER ASME Y14.5M-1994 UNLESS OTHERWISE SPECIFIED: DIMENSIONS ARE IN INCHES [MM] TOLERANCES: DECIMAL: .XX [X.X] ± .01 [0.3] .XXX [X.XX] ± .005 [0.13] .XXXX [X.XXX] ± .XXXX ANGLES: ± 2° SCALE: 4:1				<p>Winchester Electronics Corporation 62 Barnes Industrial Road North Wallingford, Connecticut 06492</p>	
CUSTOMER DRAWING					
DRAWN DATE JED 02/22/02		APPROVED DATE MJF 02/25/02		3.5mm BLIND MATE PLUG TO SMA JACK PANEL MOUNT ADAPTER	
APPROVED DATE JMC 02/25/02		APPROVED DATE KJT 02/25/02		A SD251-380-5900P SH1 1 OF 1 REV 03	