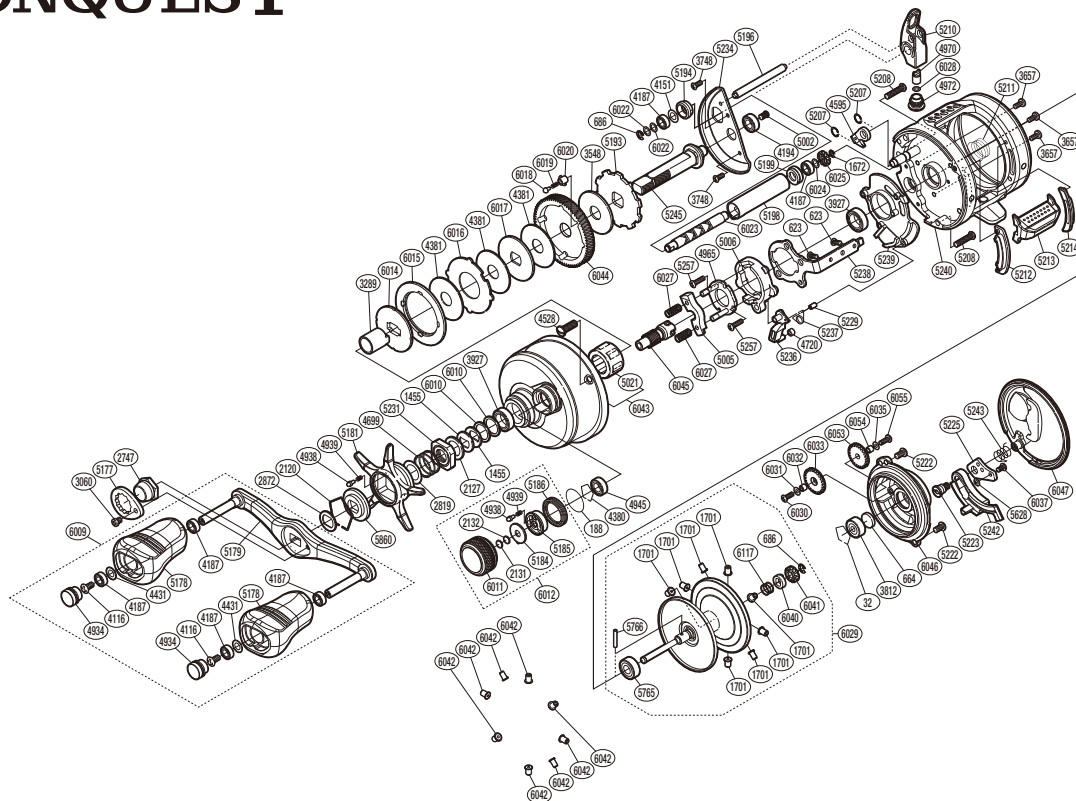


# SHIMANO

## CALCUTTA CONQUEST

### CTCQ-301



(51RL090301X)

#	Part No.	Description	#	Part No.	Description	#	Part No.	Description
0032	10GEW	Bearing Retainer	5002	10PVU	Screw	5766	10MD1	Spool Clutch Pin
0188	109EB	O Ring	5005	1046Y	Yoke	5860	10J26	Star Drag Click Plate
0623	103C0	Screw	5006	10K0Y	Clutch Cam	6009	10TTM	Handle Assembly
0664	1057S	Spacer B	5021	10F33	Roller Clutch Bearing	6010	10GHN	Washer
0686	105NK	E Lock	5177	10Q66	Handle Nut Plate	6011	10T06	Cast Control Cap
1455	1052E	Drag Spring Washer (H)	5178	10326	Handle Knob	6012	10TDA	Cast Control Cap Assembly
1672	105NC	E Lock	5179	10A69	Handle Shank Assembly	6014	10D54	Pressure Plate
1701	10CPE	Brake Collar (Gray)	5181	10AU2	Star Drag	6015	10JAZ	Drag Click Ratchet
2120	10KXV	Click Plate Retainer	5184	10L2E	Cast Control Click Plate	6016	10KQL	Eared Washer
2127	10J1N	Star Drag Spacer	5185	10BSX	Click Pin Holder	6017	10LB6	Drag Washer
2131	10897	Spool Tension Spacer B	5186	10L70	Cast Control Click Holder	6018	10C0S	Drag Click
2132	1085G	Spool Tension Spacer A	5193	10D71	Anti-Reverse Ratchet	6019	10J89	Click Spring
2747	10FNG	Handle Nut	5194	10N9Q	Worm Bushing A	6020	10J58	Drag Click Pin Holder
2819	10HHN	Washer	5196	10GUG	Level Wind Guide	6022	10J16	Washer
2872	107QQ	Friction Washer	5198	10NFU	Level Wind Guard	6023	10T05	Worm Shaft
3060	10CZ5	Screw	5199	104SP	Worm Bushing B	6024	10G6B	Washer
3289	10BN7	Roller Clutch Inner Tube	5207	10S52	C Lock	6025	10FTA	Idle Gear C
3548	10CHZ	Drag Washer	5208	103M0	Screw	6027	10ECTN	Yoke Spring
3657	103C2	Screw	5210	10NYG	Line Guide Assembly	6028	10GD0	Washer
3748	10MPR	Screw	5211	10EZE	Bearing Pressure Spring	6029	101MJ	Spool Assembly(With Bearing)
3812	105C1	Ball Bearing	5212	10972	Clutch Bar Guide B	6030	10LVM	Screw
3927	10EX8	Ball Bearing	5213	10MWH	Quick-Fire II Clutch Bar	6031	10HVD	Washer
4116	103E9	Screw	5214	10ASN	Clutch Bar Guide A	6032	10ECQ	Idle Gear B Support
4151	10G8D	Washer	5222	10LSL	Screw	6033	10T04	Idle Gear B
4187	104VX	Ball Bearing	5223	10GM6	B Side Plate Insert	6035	10HYM	Washer
4194	105BP	Ball Bearing	5225	10AYX	Damper Bush	6037	10U0S	Screw
4380	1057X	Retainer	5229	108S5	Clutch Pawl Spring Collar	6040	10MCY	Spool Shaft Cam
4381	10CHW	Drag Washer	5231	10A3W	Star Drag Nut	6041	10JAH	Idle Gear A
4431	10G8G	Washer	5234	109SY	Drive Shaft Retainer	6043	10S3L	Left Side Plate Assembly
4528	10A6X	Screw	5236	105ZN	Clutch Pawl	6044	10QRG	Drive Gear
4595	10MW1	Anti-Reverse Pawl Assembly	5237	104CK	Clutch Pawl Spring	6045	10AAJ	Pinion Gear
4699	10A71	Star Drag Spring	5238	10QGQ	Clutch Plate	6046	10S3H	Brake Case Assembly
4720	1048C	Clutch Pawl Bushing	5239	10BVT	Clutch Guard	6047	100SB	Right Side Plate Assembly
4934	10FMC	Handle Knob Seal	5240	10EVM	Frame Assembly	6053	10TUG	Idle Gear D
4938	10B27	Click Pin	5242	10BAT	Side Plate Cam Lever	6054	10TUH	Idle Gear D Support
4939	10988	Click Spring	5243	10KNB	Damper Spring	6055	10TTU	Screw
4945	105BR	Ball Bearing	5245	10TUR	Drive Shaft	6117	10E20	Spool Shaft Spring
4965	10F3Y	Clutch Cam Retainer	5257	10TP0	Screw			
4970	10FFT	Line Guide Pawl	5628	10280	Washer			
4972	10FJC	Pawl Cap	5765	105CA	Ball Bearing	6042	10ECR	Brake Collar (Clear) (Accessory)

Please note that the number of adjusting washers may not be the same as shown in the exploded views.  
(Adjustment will vary with each individual product.)

(240520)\_005